

## High-quality images and a host of productivity features in a 34" FHD display

Designed with professional users in mind, the Q34E2A is equipped with a 3-sided frameless 34" IPS/3FL panel with a 21:9 ratio, 300 cd/m2 brightness, and WFHD resolution. Its wide array of functions and features includes wide viewing angles of 178°/178°, a tiltable stand, VESA mount, built-in speakers, auto source input, and eye-friendly technologies like Flicker-Free and Low Blue Mode.

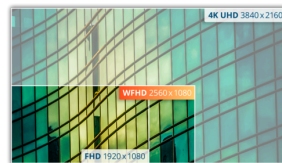


## Features



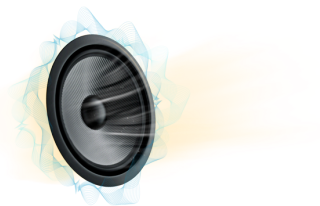
### Frameless design

Besides looking modern and attractive, frameless designs enable seamless multi-monitor setups. Your cursor/windows will not be lost anymore in the dark abyss of bezels, when many displays are placed side by side.



### Wide FHD (WFHD) Resolution

With 2560 x 1080 resolution, Wide Full HD (WFHD) offers superior picture quality and crisp imagery that reveals every detail. The widescreen 21:9 aspect ratio is perfect for watching movies in an expansive format or immersing yourself in the latest game, plus it offers more space when it's time to work.

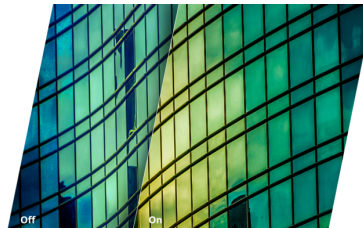


### Speakers

Built-in speakers make it easy to catch up with family, friends and colleagues. For movies, music, games and more, you'll enjoy quality audio without the hassle of connecting external speakers.

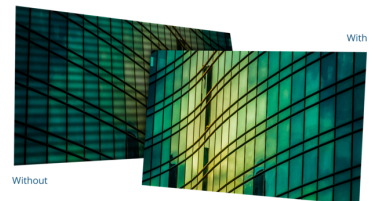
### IPS Panel

IPS panel ensures an excellent viewing experience with lifelike yet brilliant and accurate colors. Colors look consistent no matter from which angle you look at the display.



### Low Blue Light

AOC Lowblue Light protects you from harmful blue light which, during long sessions, has been shown to cause eye strain, headaches, and sleeping disorders. Our Lowblue Light feature reduces the harmful wavelengths emitted without sacrificing color composition, setting the experience free from the worry of eye damage.



### Flicker Free

AOC Flicker-Free Technology utilises a DC (Direct Current) backlight panel, reducing flickering light levels. With eye strain and fatigue absolutely minimized, feel free to enjoy those long, intense gaming sessions in comfort!

GENERAL	
Model Name	Q34E2A
Channel	B2B
Product line	Essential-line
Design family	E2
Launch date (ETA)	10/11/2020
EAN	4038986118378

DISPLAY INFORMATION	
Screen size (inch)	34,0
Screen size (cm)	86,36
Flat / Curved	Flat
Display hardness	3H
Panel treatment	Antiglare (AG)
Pixels per Inch	81,0
Panel resolution	2560x1080
Aspect ratio	21:9
Panel type	IPS
Backlight type	WLED
Max Refresh rate	75 Hz
Response time GtG	4 ms
Static contrast ratio	1000:1
Dynamic contrast ratio	50M:1
Viewing angle (CR10)	178/178
Display colours	16.7 Million
Brightness in nits	300 cd/m2

VIDEO FEATURES	
Sync technology (VRR)	Adaptive Sync
Blue Light Technology	Low Blue Light
Colour space (sRGB) CIE 1931 %	123,0
Colour space (Adobe RGB) CIE 1931 %	91,0
Flicker-Free	Flicker Free

CABINET INFORMATION	
Bezel Colour (front)	Black
Cabinet colour (backside)	Black
Cabinet finishing (backside)	Texture
Removable stand	Yes
Speaker power	3 W x 2
Kensington Lock	Yes
Vesa wallmount	100x100

ERGONOMICS	
Tilt	-6/23
Swivel	-180/180
Pivot	No

SUSTAINABILITY	
Energy star	Energy star 8
EPEAT	Silver
WEEE	Yes
REACH compliant	Yes
RoHs compliant	Yes
HF	Yes
Mercury free	Yes
Recycable packaging material	100 % recycable

POWER CONSUMPTION	
Power supply	Internal
Power consumption on (Energystar test method) in watts	36,0
Power consumption standby in watts	0,3
Power consumption off in watts	0,3
Energy class	E

REGULATORY COMPLIANCE	
CB	Yes
CE	Yes
TUV-Bauart-Mark	Yes
ISO 9241-307	Yes
Microsoft WHQL	Yes

CONNECTIVITY INFORMATION	
HDMI	HDMI 1.4 x 2
DisplayPort	DisplayPort 1.2 x 1
Audio Output	Headphone out (3.5mm)

PRODUCT DIMENSIONS (METRIC)	
Product dimensions incl. base (WxHxD) mm	475(H) x 817.4(W) x 253.8(D)
Product dimensions excl. base (WxHxD) mm	370.7(H) x 817.4(W) x 55.7(D)
Packaging dimensions (WxHxD) mm	506(H) x 940(W) x 187(D)
Gross weight incl. package (in kg)	10,9
Product with stand (kg)	8,1

**WHAT'S IN THE BOX**

**HDMI cable** 1.8

**Power cable C13** 1.8

**OTHER INFORMATION**

**Warranty period** 3 years