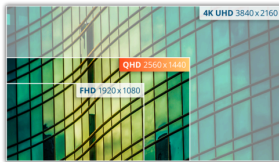


## Convenience, comfort, and productivity in a 31.5" QHD display

The Q32E2N is equipped with a host of convenient, high-quality features for today's professionals. Its 31.5" IPS panel delivers QHD resolution with a slim 3-slided frameless design. Feature-rich, it includes wide 178°/178° viewing angles, built-in speakers, 250 cd/m2 brightness, 4ms response time, and auto source input, in addition to a tilting stand, VESA mount, and eye-friendly technologies like Flicker-Free and Low Blue Mode.

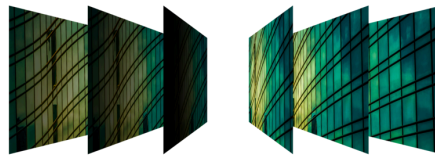


## Features



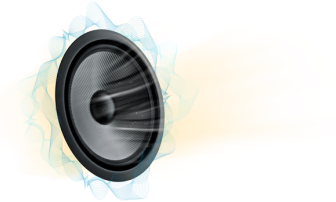
### QHD Resolution

With 2560 x 1440 resolution, Quad HD (QHD) offers superior picture quality and sharp imagery that reveals the finest details. The widescreen 16:9 aspect ratio provides plenty of space to spread out and work, plus allows you to enjoy games or movies in their original size.



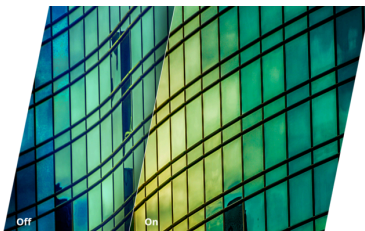
### IPS Panel

IPS panel ensures an excellent viewing experience with lifelike yet brilliant and accurate colours. Colours look consistent no matter from which angle you look at the display



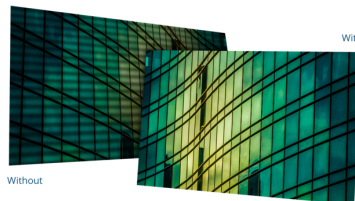
### Speakers

Built-in speakers make it easy to catch up with family, friends and colleagues. For movies, music, games and more, you'll enjoy quality audio without the hassle of connecting external speakers.



### Low Blue Light

AOC Lowblue Light protects you from harmful blue light which, during long sessions, has been shown to cause eye strain, headaches, and sleeping disorders. Our Lowblue Light feature reduces the harmful wavelengths emitted without sacrificing color composition, setting the experience free from the worry of eye damage.



### Flicker Free

AOC Flicker-Free Technology utilises a DC (Direct Current) backlight panel, reducing flickering light levels. With eye strain and fatigue absolutely minimized, feel free to enjoy those long, intense gaming sessions in comfort!



### Three-Year Warranty

AOC stands behind the quality of each and every monitor with a generous three-year warranty starting from the original date of purchase. Within the warranty period, any AOC displays with manufacturing defects or faulty components will be repaired or replaced at no additional charge.

GENERAL	
Model Name	Q32E2N
EAN	4038986118163
Channel	B2B
Product line	Essential-line
Design family	E2
Launch date (ETA)	9/15/2020

EXTERIOR	
Bezel type (front)	Narrow
Bezel Colour (front)	Black
Bezel finishing (front)	Non-glossy
Cabinet colour (backside)	Black
Cabinet finishing (backside)	Non-glossy

ERGONOMICS	
Vesa wallmount	100x100
Tilt	-6,5/23,5
Pivot	No

FEATURES	
Sync technology (VRR)	Adaptive Sync
Blue Light Technology	Low Blue Light
Flicker-Free	Flicker Free
Kensington Lock	Yes
Colour space (Adobe RGB) CIE 1931 %	77,0

SCREEN	
Screen size (inch)	31,5
Screen size (cm)	80,01
Flat / Curved	Flat
Display hardness	3H
Panel treatment	Antiglare (AG)
Panel resolution	2560x1440
Resolution name	QHD
Aspect ratio	16:9
Panel type	IPS
Backlight type	WLED
Max Refresh rate	75 Hz
Response time GtG	4 ms
Static contrast ratio	3000:1
Dynamic contrast ratio	20M:1
Viewing angle (CR10)	178/178
Display colours	16.7 Million
Brightness in nits	250 cd/m2

POWER / ENVIRONMENTAL	
Power supply	Internal
Power source	100 - 240V 50/60Hz
Power consumption standby in watts	0,3
Power consumption off in watts	0,3
Energy class	F

WHAT'S IN THE BOX	
HDMI cable	1.8

CONNECTIVITY AND MULTIMEDIA	
HDMI	HDMI 1.4 x 1
DisplayPort	DisplayPort 1.2 x 1
USB Hub	No
USB fast charge port	No
Speakers	Yes
Speaker power	3 W x 2
Audio Output	Headphone out (3.5mm)

PRODUCT DIMENSIONS	
Product dimensions incl. base (WxHxD) mm	529.67(H) x 730.19(W) x 248.77(D)
Product dimensions excl. base (WxHxD) mm	434.16(H) x 730.19(W) x 57.67(D)
Packaging dimensions (WxHxD) mm	553(H) x 831(W) x 187(D)
Gross weight incl. package (in kg)	10,2
Net weight excl. package (in kg)	7,42