

Quality and connectivity in a 27" Full HD display

Intended for professional users, the 27E2QAE features a 27" IPS/3FL panel in Full HD resolution with an elegant 3-sided frameless design. Offering wide viewing angles of 178°/178°, integrated speakers, and auto source input, it also includes a host of comfort-enhancing features such as a tilting stand, VESA mount, Low Blue Mode, and Flicker-Free technology.

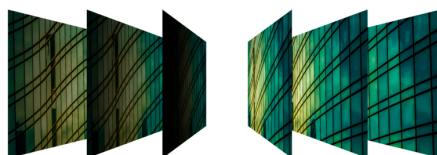


Features



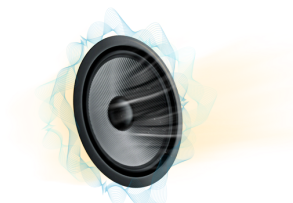
Frameless design

Besides looking modern and attractive, frameless designs enable seamless multi-monitor setups. Your cursor/windows will not be lost anymore in the dark abyss of bezels, when many displays are placed side by side.



VA Panel

VA Panels (Vertical Alignment) display deeper blacks and a high contrast for extra vivid and bright images.



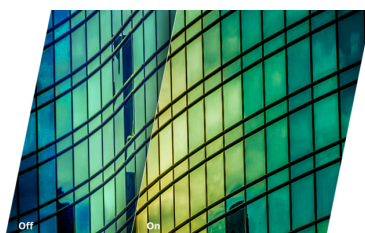
Speakers

Built-in speakers make it easy to catch up with family, friends and colleagues. For movies, music, games and more, you'll enjoy quality audio without the hassle of connecting external speakers.



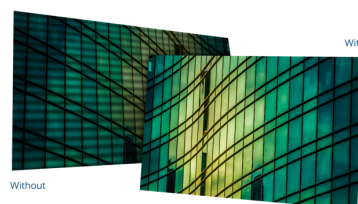
FHD Resolution

Want to watch a Blu-ray movie in full quality, enjoy games in high resolution or read crisp text in office applications? Thanks to its Full HD resolution of 1920 x 1080 pixels, this monitor lets you do just that. Whatever you are viewing, with Full HD it will be displayed in rich detail without requiring a high-end graphics card or consuming a lot of your system's resources.



Low Blue Light

AOC Lowblue Light protects you from harmful blue light which, during long sessions, has been shown to cause eye strain, headaches, and sleeping disorders. Our Lowblue Light feature reduces the harmful wavelengths emitted without sacrificing color composition, setting the experience free from the worry of eye damage.



Flicker Free

AOC Flicker-Free Technology utilises a DC (Direct Current) backlight panel, reducing flickering light levels. With eye strain and fatigue absolutely minimized, feel free to enjoy those long, intense gaming sessions in comfort!

GENERAL	
Model Name	27E2QAE
EAN	4038986187244
Channel	B2B
Product line	Essential-line
Design family	E2
Launch date (ETA)	7/1/2020

EXTERIOR	
Bezel type (front)	3-sided frameless
Bezel Colour (front)	Black
Bezel finishing (front)	Texture
Cabinet colour (backside)	Black
Cabinet finishing (backside)	Texture

ERGONOMICS	
Vesa wallmount	100x100
Tilt	-3,5/21,5
Pivot	No

SUSTAINABILITY	
TCO Certified	8
Energy star	Energy star 8

FEATURES	
Sync technology (VRR)	Adaptive Sync
Blue Light Technology	Low Blue Light
Flicker-Free	Flicker Free
Kensington Lock	Yes
Colour space (Adobe RGB) CIE 1931 %	74,0

SCREEN	
Screen size (inch)	27,0
Screen size (cm)	68,58
Flat / Curved	Flat
Display hardness	3H
Panel resolution	1920x1080
Resolution name	FHD
Aspect ratio	16:9
Panel type	IPS
Backlight type	WLED
Max Refresh rate	75 Hz
Response time GtG	4 ms
Static contrast ratio	1000:1
Dynamic contrast ratio	20M:1
Viewing angle (CR10)	178/178
Display colours	16.7 Million
Brightness in nits	300 cd/m2
Pixel Pitch (mm)	0,3114
Pixels per Inch	8159,0

POWER / ENVIRONMENTAL	
Power supply	Internal
Power source	100 - 240V 50/60Hz
Power consumption standby in watts	0,3
Power consumption off in watts	0,3
Energy class	E

WHAT'S IN THE BOX	
HDMI cable	1.8
Displayport cable	1.8

CONNECTIVITY AND MULTIMEDIA	
HDMI	HDMI 1.4 x 1
DisplayPort	DisplayPort 1.2 x 1
D-SUB (VGA)	1x
Speakers	Yes
Speaker power	2 W x 2
Audio Output	Headphone out (3.5mm)

PRODUCT DIMENSIONS	
Product dimensions incl. base (WxHxD) mm	445.4(H) x 613.6(W) x 201.3(D)
Product dimensions excl. base (WxHxD) mm	369.5(H) x 613.6(W) x 51.1(D)
Packaging dimensions (WxHxD) mm	470(H) x 690(W) x 140(D)
Gross weight incl. package (in kg)	6,1
Net weight excl. package (in kg)	4,21