

Suggest Tools

Here are some tools that can be used for the LCD monitor's service and repair.

Philips-head Screwdriver

Use a Philips-head screwdriver to fasten/remove the K- or B-typed screws



P/N: N/A

Gloves

To protect LCD Panel and your hand



P/N: (L) N/A (M) N/A

C/D Disassembly Tool

Use C/D Disassembly Tool to open cosmetic cover and avoid scratch.



P/N: N/A

Spacer Screwdriver

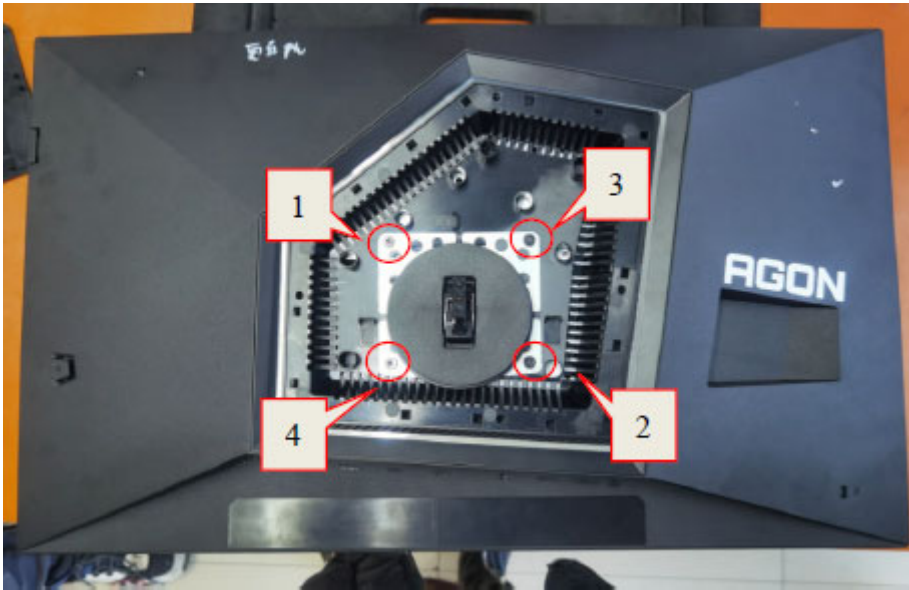
Use a spacer screwdriver to fasten/remove spacer screws or hex screws.



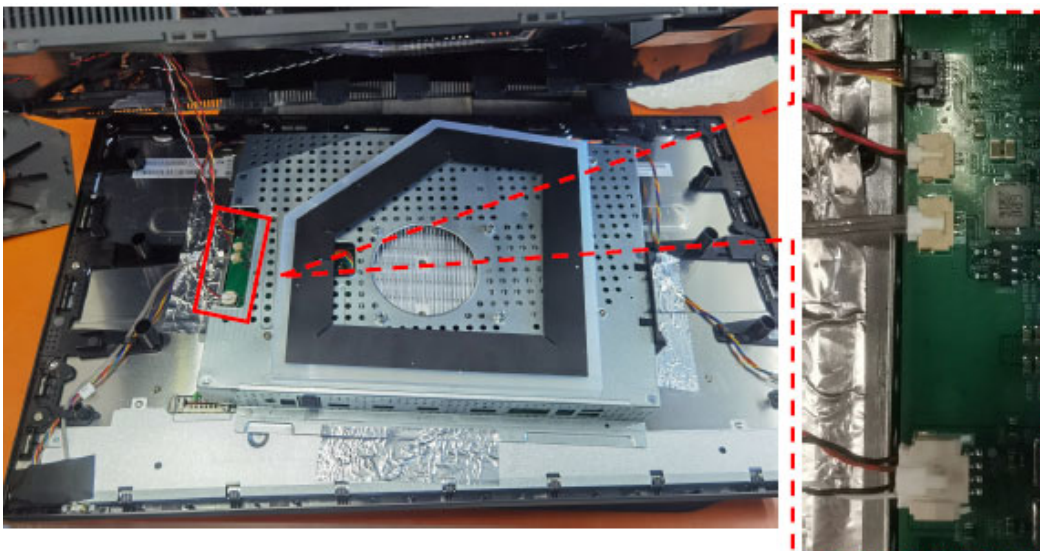
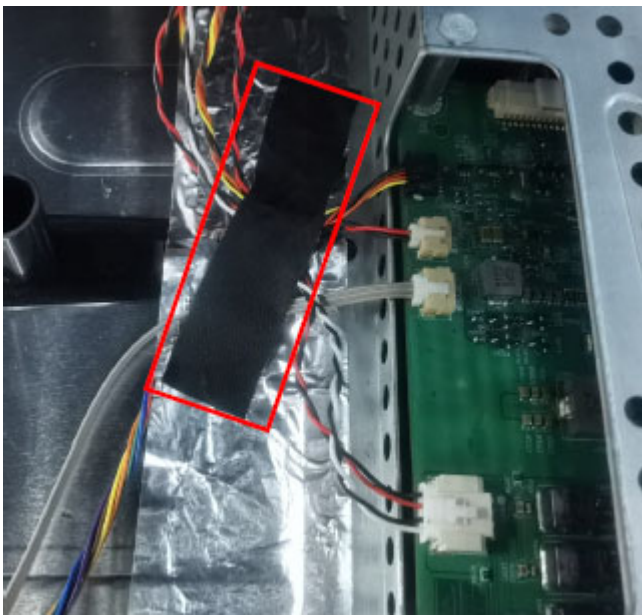
P/N: N/A

Disassembly Instruction

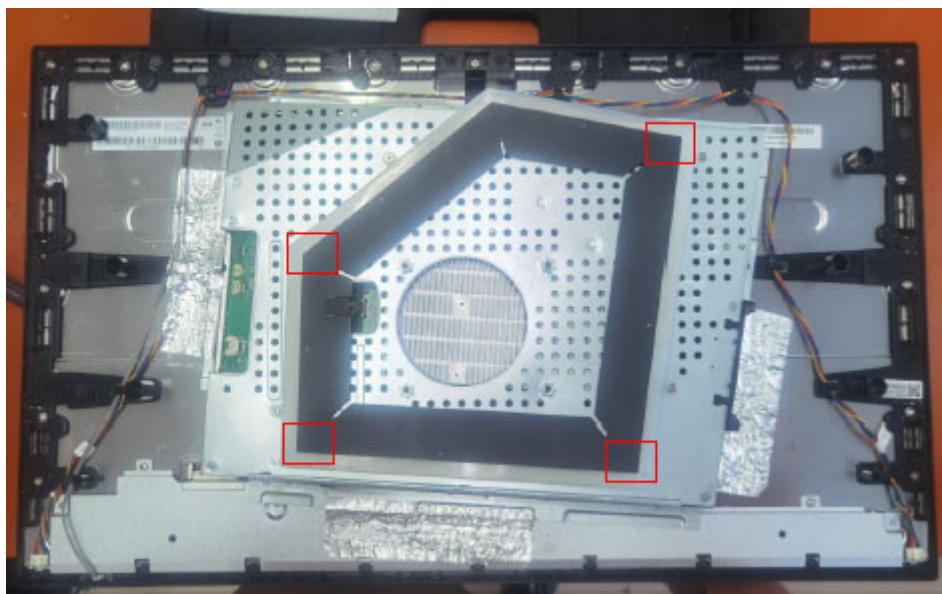
1. Remove the screws to remove the rear cover



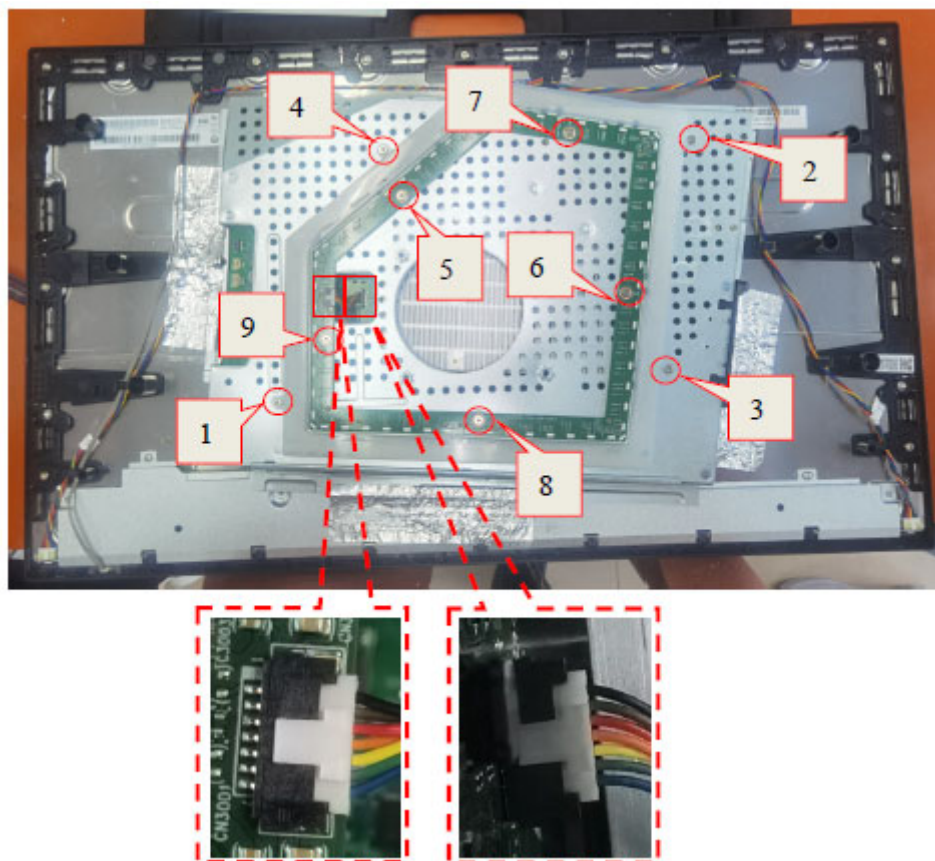
2. Tear off the tape, Disconnect the connection.

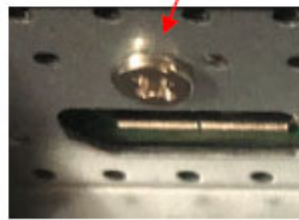
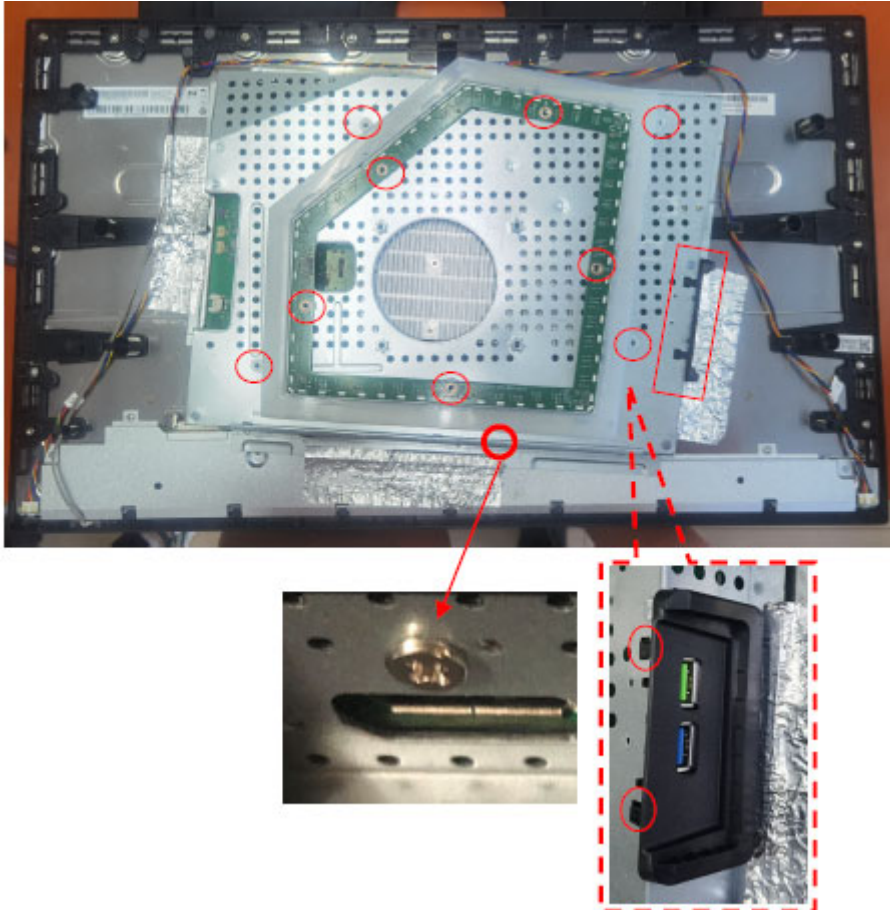


3. Tear off the Mylar.

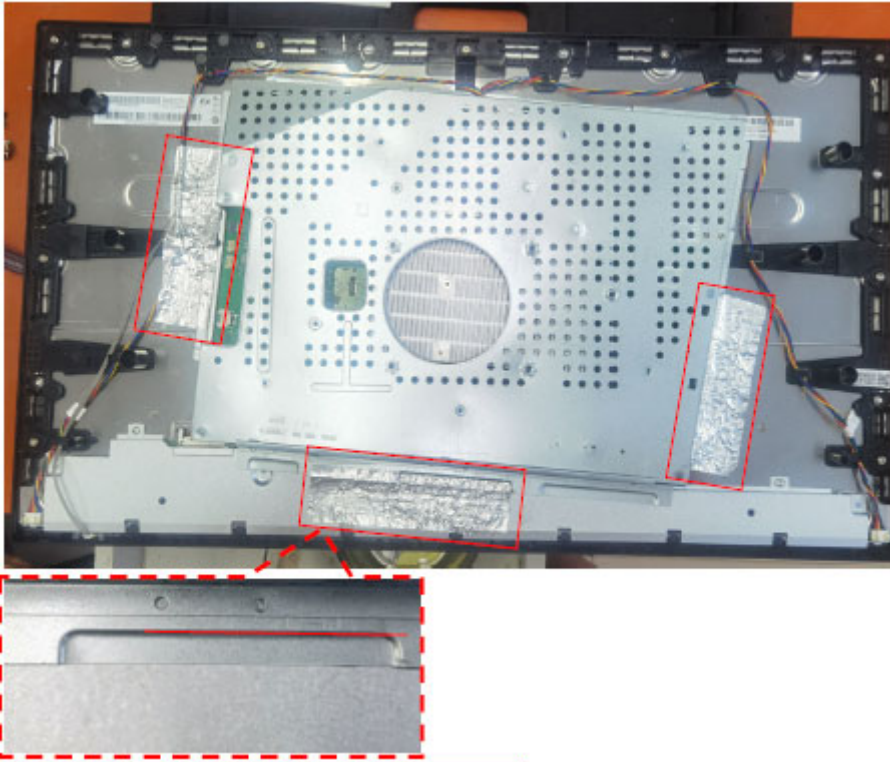


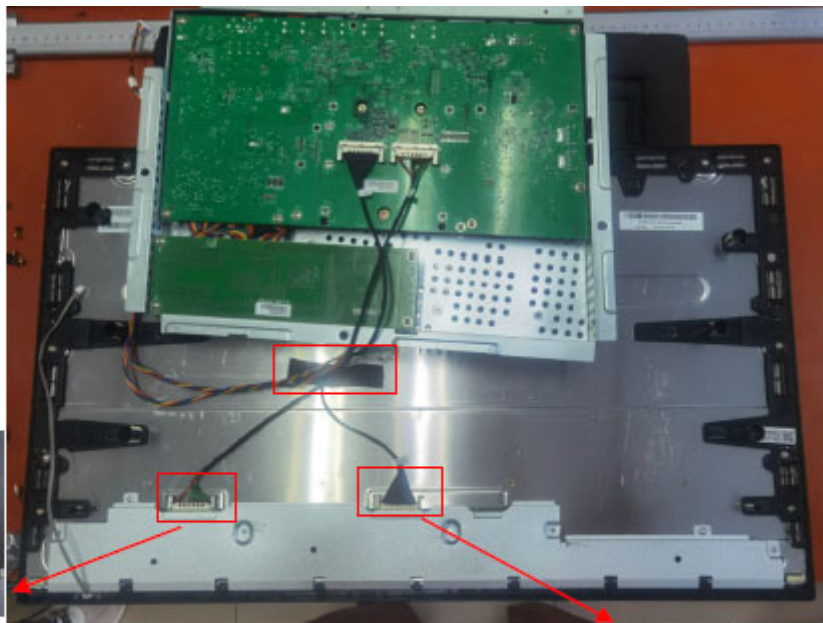
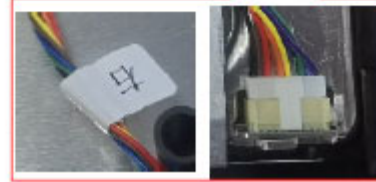
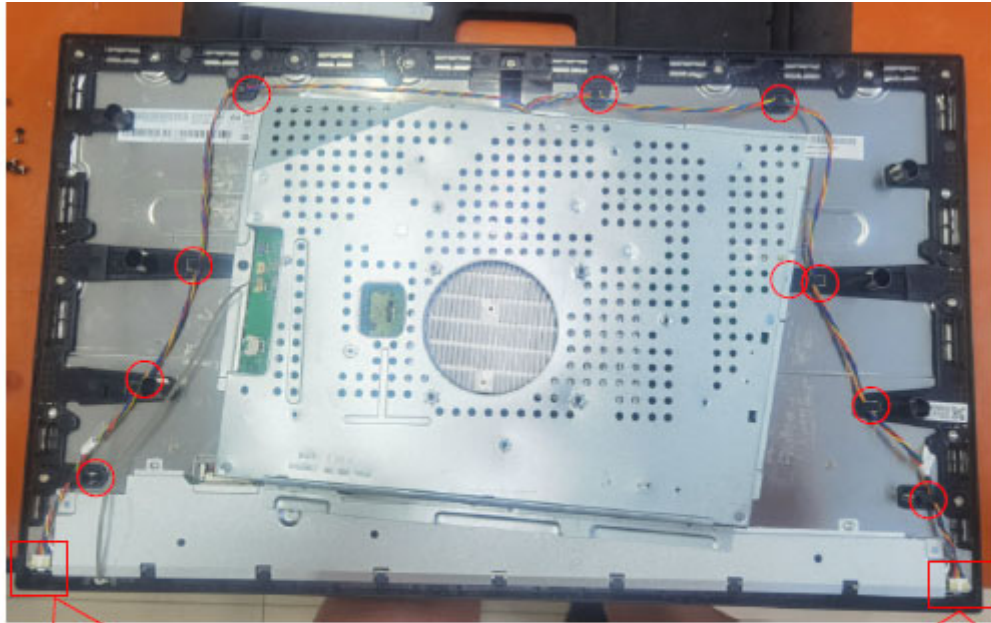
4. Remove the screws, Disconnect the connection.



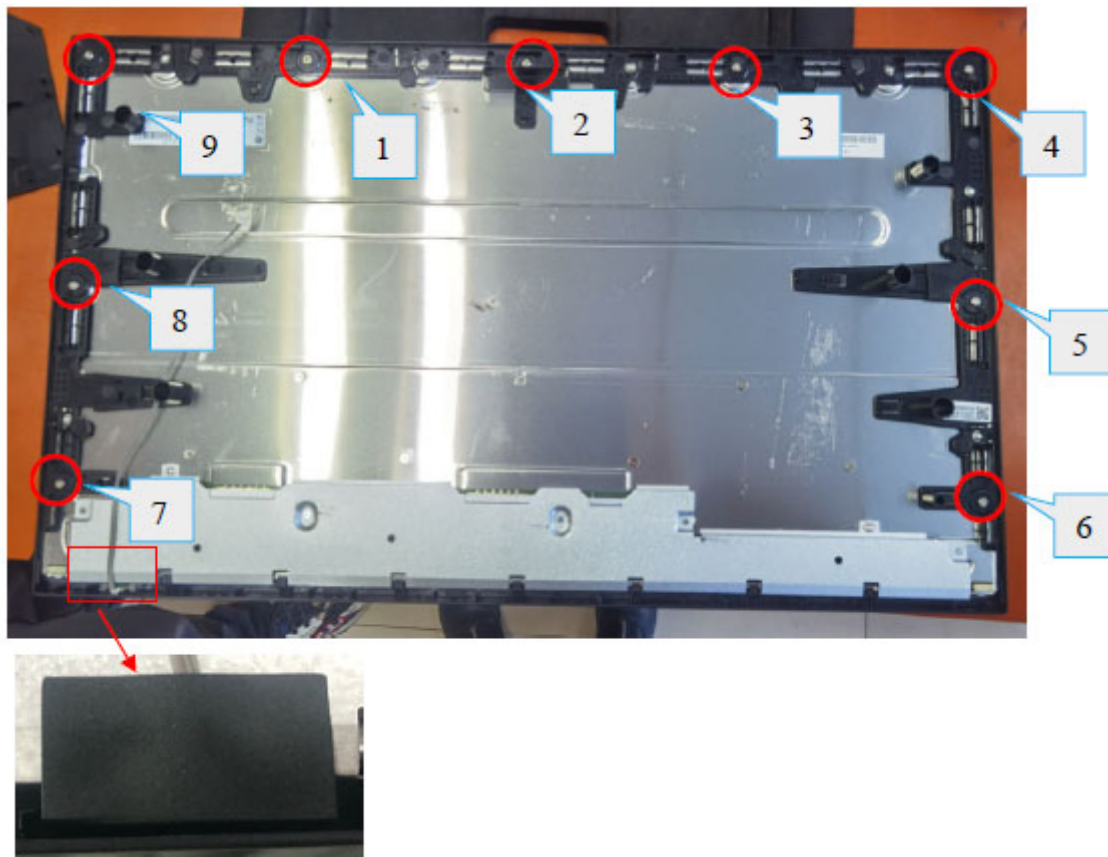


5. Tear off the tapes, Disconnetc the connection.

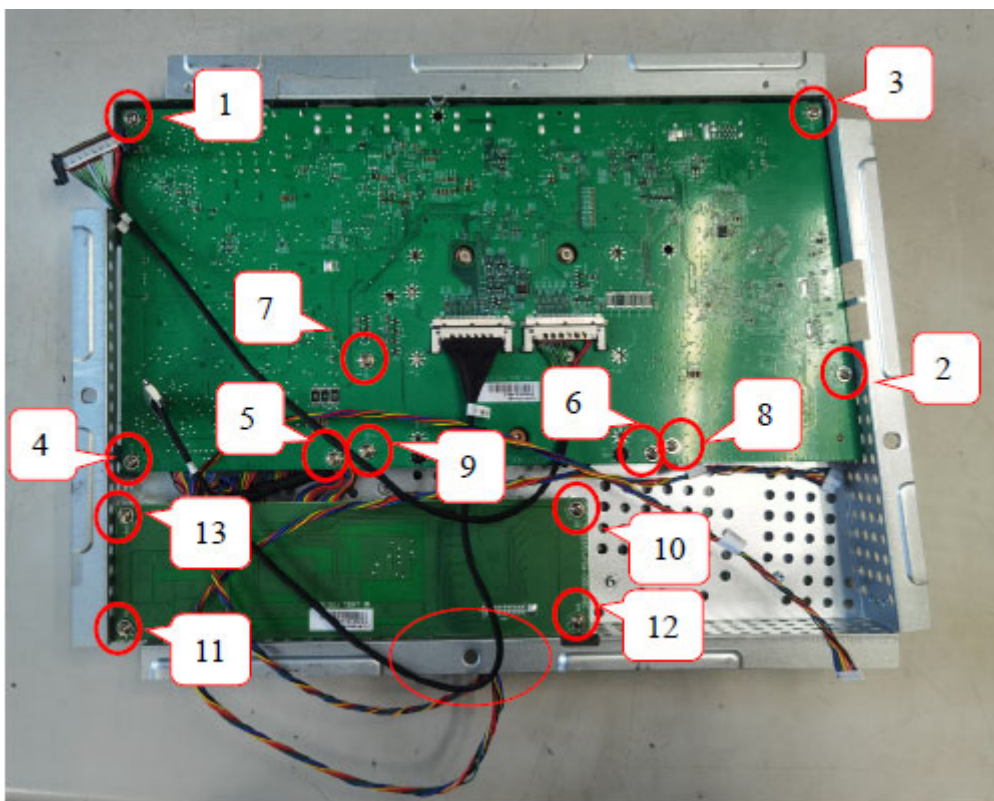


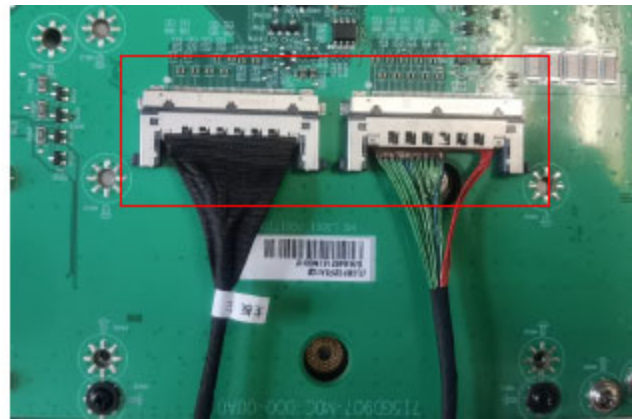
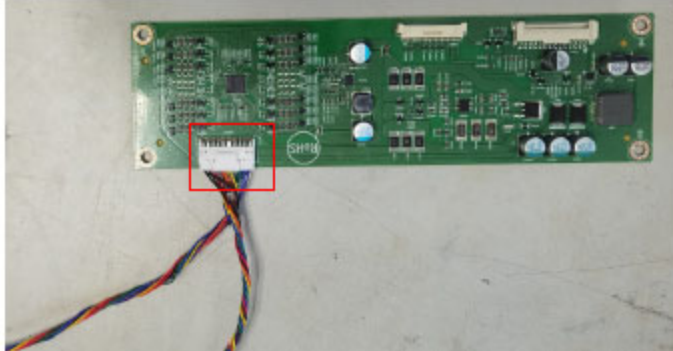
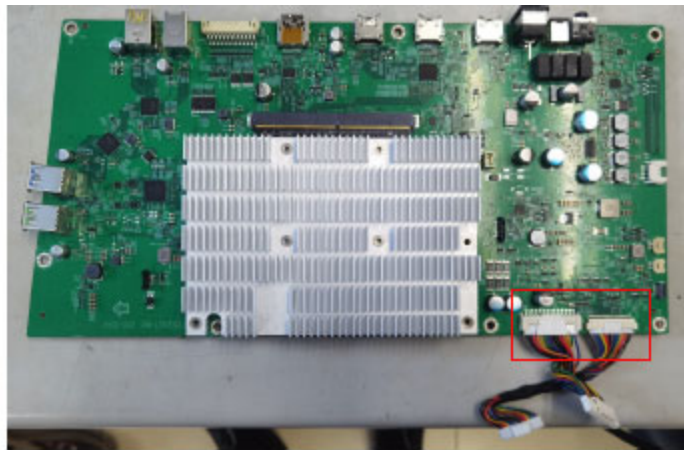
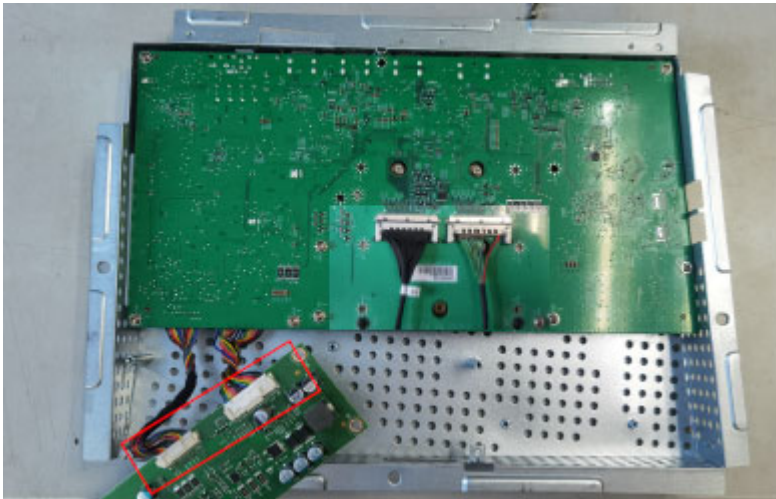


6. Remove the screws to remove the middle frame.

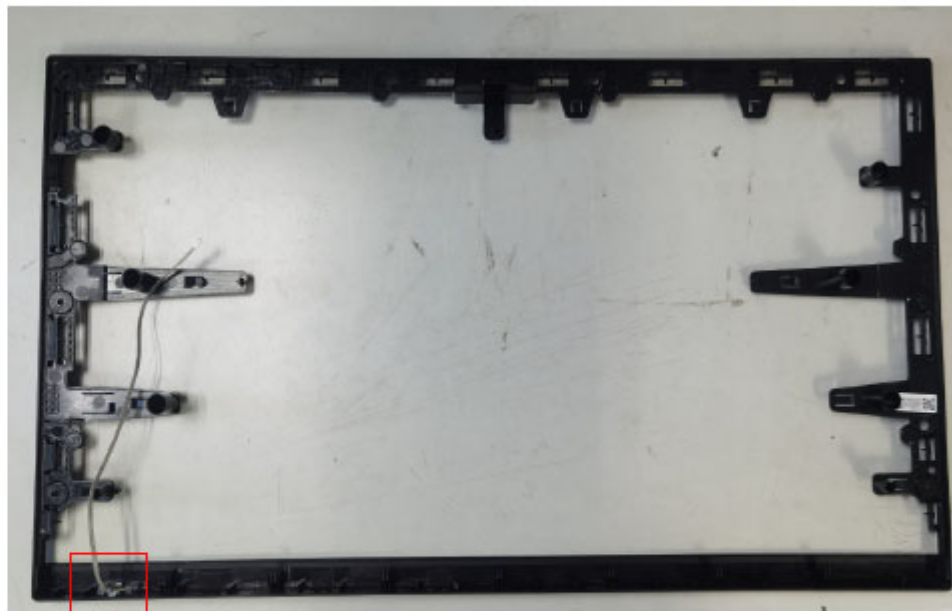


7. Remove the screws to remove the boards. Disconnect the connection.





8. Remove the LENS board.



The PANEL

