



LCD Monitor User Manual

AG276QSG2

AOC

Safety.....	1
National Conventions.....	1
Power.....	2
Installation	3
Cleaning.....	4
Other.....	5
Setup.....	6
Contents in Box	6
Setup Stand & Base	7
Adjusting the monitor	8
Connecting the Monitor.....	9
Wall Mounting.....	10
G-SYNC function	11
HDR.....	12
Adjusting.....	13
Hotkeys.....	13
OSD Key Guide (Menu).....	14
OSD Menu.....	15
G-SYNC Processor	15
Preset Mode.....	17
Light FX	18
Picture.....	19
Settings	21
Audio.....	22
OSD Setup.....	23
Information.....	24
LED Indicator	25
Troubleshoot	26
Specification.....	27
General Specification	27
Preset Display Modes.....	28
Pin Assignments.....	29
Plug and Play.....	30

Safety

National Conventions

The following subsections describe notational conventions used in this document.

Notes, Cautions, and Warnings

Throughout this guide, blocks of text may be accompanied by an icon and printed in bold type or in italic type. These blocks are notes, cautions, and warnings, and they are used as follows:



NOTE: A NOTE indicates important information that helps you make better use of your computer system.



CAUTION: A CAUTION indicates either potential damage to hardware or loss of data and tells you how to avoid the problem.



WARNING: A WARNING indicates the potential for bodily harm and tells you how to avoid the problem. Some warnings may appear in alternate formats and may be unaccompanied by an icon. In such cases, the specific presentation of the warning is mandated by regulatory authority.

Power



The monitor should be operated only from the type of power source indicated on the label. If you are not sure of the type of power supplied to your home, consult your dealer or local power company.



The monitor is equipped with a three-pronged grounded plug, a plug with a third (grounding) pin. This plug will fit only into a grounded power outlet as a safety feature. If your outlet does not accommodate the three-wire plug, have an electrician install the correct outlet, or use an adapter to ground the appliance safely. Do not defeat the safety purpose of the grounded plug.



Unplug the unit during a lightning storm or when it will not be used for long periods of time. This will protect the monitor from damage due to power surges.



Do not overload power strips and extension cords. Overloading can result in fire or electric shock.



To ensure satisfactory operation, use the monitor only with UL listed computers which have appropriate configured receptacles marked between 100-240V AC, Min. 5A.



The wall socket shall be installed near the equipment and shall be easily accessible.



For use only with the attached power adapter

Manufacturers: TPV Electronics(Fujian) Co., Ltd.

Model: ADPC19135

Installation

! Do not place the monitor on an unstable cart, stand, tripod, bracket, or table. If the monitor falls, it can injure a person and cause serious damage to this product. Use only a cart, stand, tripod, bracket, or table recommended by the manufacturer or sold with this product. Follow the manufacturer's instructions when installing the product and use mounting accessories recommended by the manufacturer. A product and cart combination should be moved with care.

! Never push any object into the slot on the monitor cabinet. It could damage circuit parts causing a fire or electric shock. Never spill liquids on the monitor.

! Do not place the front of the product on the floor.

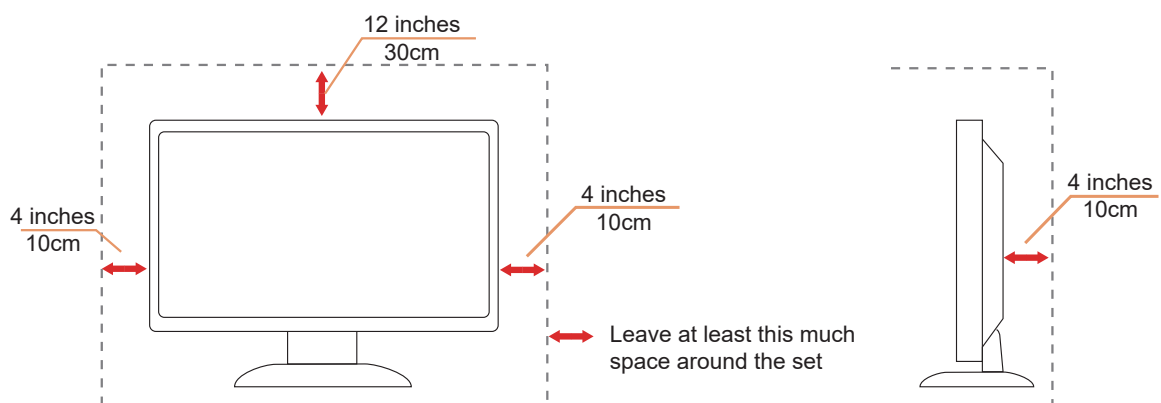
! If you mount the monitor on a wall or shelf, use a mounting kit approved by the manufacturer and follow the kit instructions.

! Leave some space around the monitor as shown below. Otherwise, air-circulation may be inadequate hence overheating may cause a fire or damage to the monitor.


! To avoid potential damage, for example the panel peeling from the bezel, ensure that the monitor does not tilt downward by more than -5 degrees. If the -5 degree downward tilt angle maximum is exceeded, the monitor damage will not be covered under warranty.


See below the recommended ventilation areas around the monitor when the monitor is installed on the wall or on the stand:

Installed with stand




Cleaning

 Clean the cabinet regularly with a water-dampened, soft cloth.

 When cleaning use a soft cotton or microfiber cloth. The cloth should be damp and almost dry, do not allow liquid into the case.



 Please disconnect the power cord before cleaning the product.

Other



If the product is emitting a strange smell, sound or smoke, disconnect the power plug IMMEDIATELY and contact a Service Center.



Make sure that the ventilating openings are not blocked by a table or curtain.



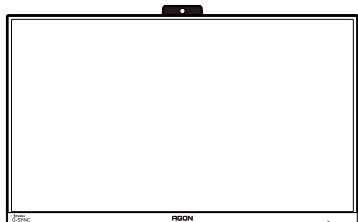
Do not engage the LCD monitor in severe vibration or high impact conditions during operation.



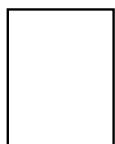
Do not knock or drop the monitor during operation or transportation.

Setup

Contents in Box



Monitor



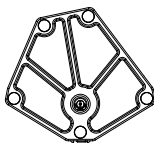
Quick Start Guide



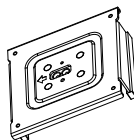
Warranty card



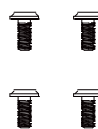
Stand



Base



Wall Mount Bracket



Screws



Screwdriver



Power Cable



Adaptor



DisplayPort Cable



HDMI Cable



USB Cable



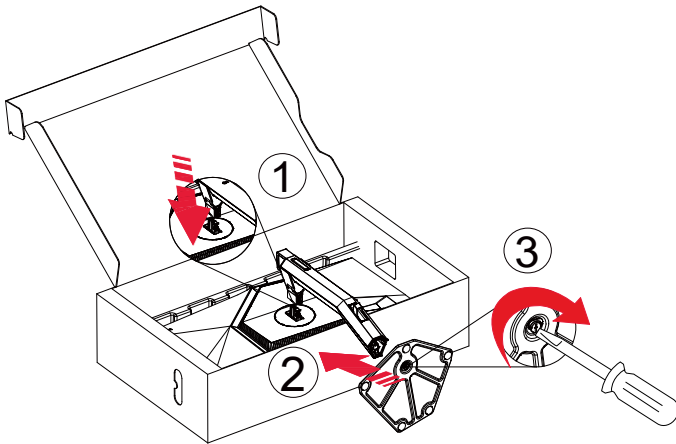
Audio Cable

★ Not all signal cables will be provided for all countries and regions. Please check with the local dealer or AOC branch office for confirmation.

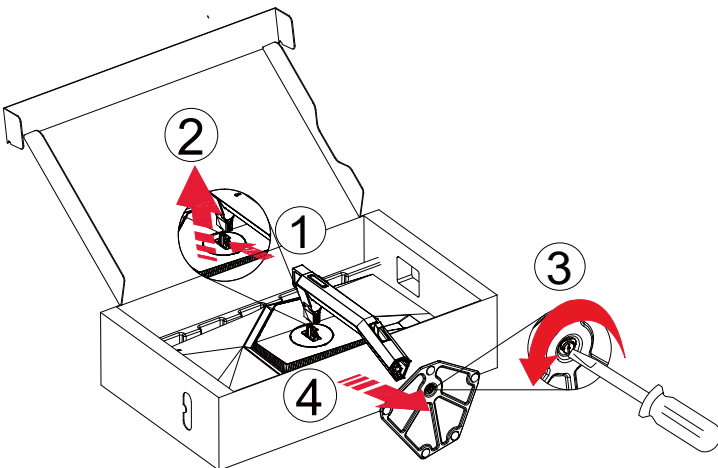
Setup Stand & Base

Please setup or remove the base following the steps as below.

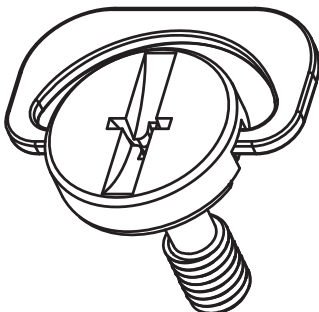
Setup:



Remove:



Specification for base screw: M6*13 mm (effective thread 5.5 mm)

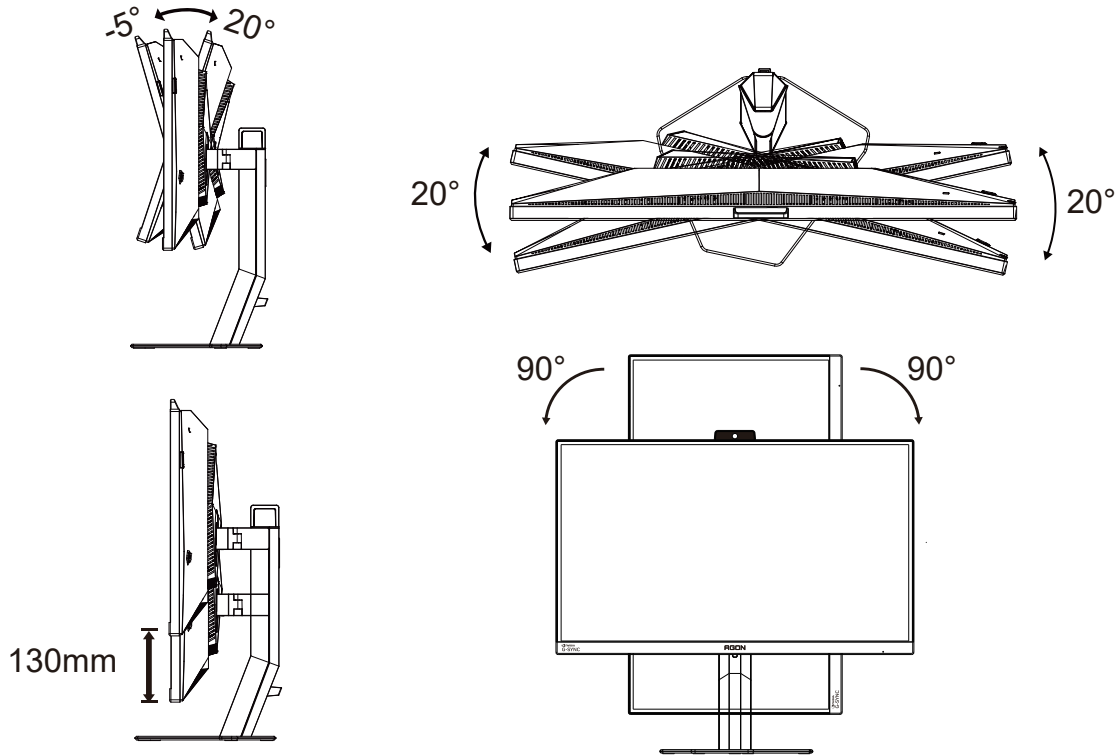


Adjusting the monitor

For optimal viewing it is recommended to look at the full face of the monitor, then adjust the monitor's angle to your own preference.

Hold the stand so you will not topple the monitor when you change the monitor's angle.

You are able to adjust the monitor as below:



NOTE:

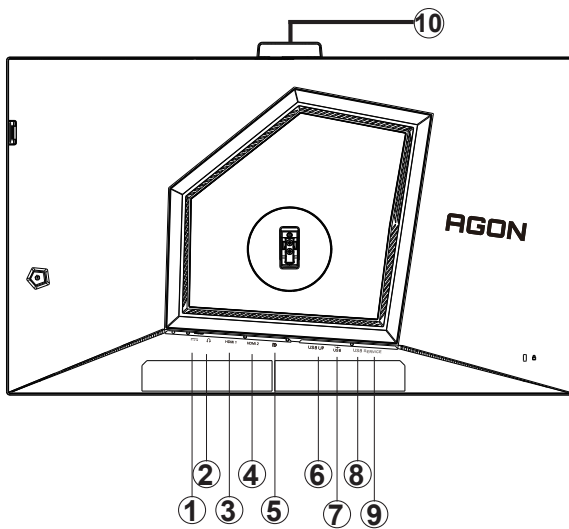
Do not touch the LCD screen when you change the angle. It may cause damage or break the LCD screen.

Warning:

1. To avoid potential screen damage, such as panel peeling, ensure that the monitor does not tilt downward by more than -5 degrees.
2. Do not press the screen while adjusting the angle of the monitor. Grasp only the bezel.

Connecting the Monitor

Cable Connections In Back of Monitor and Computer:



1. Power
2. Earphone
3. HDMI1
4. HDMI2
5. DisplayPort
6. USB upstream
7. USB3.2 Gen1 downstream + fast charging
8. USB3.2 Gen1 downstream
9. micro USB
10. light sensor

Connect to PC

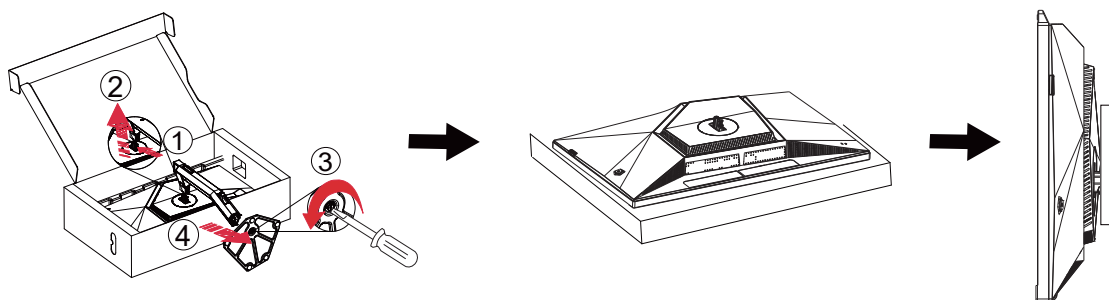
1. Connect the power cord to the back of the display firmly.
2. Turn off your computer and unplug its power cable.
3. Connect the display signal cable to the video connector on the back of your computer.
4. Plug the power cord of your computer and your display into a nearby outlet.
5. Turn on your computer and display.

If your monitor displays an image, installation is complete. If it does not display an image, please refer Troubleshooting.

To protect equipment, always turn off the PC and LCD monitor before connecting.

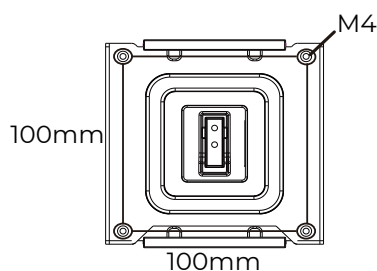
Wall Mounting

Preparing to Install An Optional Wall Mounting Arm.

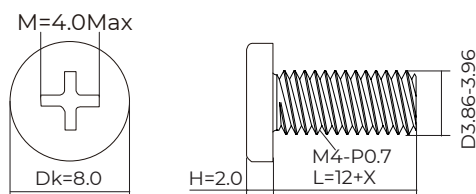


This monitor can be attached to a wall mounting arm you purchase separately. Disconnect power before this procedure. Follow these steps:

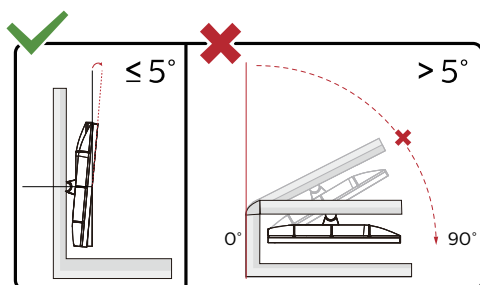
1. Remove the base.
2. Follow the manufacturer's instructions to assemble the wall mounting arm.
3. Place the wall mounting arm onto the back of the monitor. Line up the holes of the arm with the holes in the back of the monitor.
4. Reconnect the cables. Refer to the user's manual that came with the optional wall mounting arm for instructions on attaching it to the wall.



Specification of wall hanger screws: M4*(12+X)mm, (X=Thickness of Wall mount bracket)



Noted: VESA mounting screw holes are not available for all models, please check with the dealer or official department of AOC. Always contact manufacturer for wall-mount installation.



* Display design may differ from those illustrated.

Warning:

1. To avoid potential screen damage, such as panel peeling, ensure that the monitor does not tilt downward by more than -5 degrees.
2. Do not press the screen while adjusting the angle of the monitor. Grasp only the bezel.

G-SYNC function

1. G-SYNC function is working with DisplayPort
2. To enjoy the perfect gaming experience with G-SYNC, you need to purchase a Separate NVIDIA GPU card that supports G-SYNC.

G-sync system requirements:

Requirement category: G-SYNC Display (Hard G-SYNC)

Graphics card: NVIDIA GeForce GTX 650 Ti BOOST or higher

Monitor: A monitor with a dedicated G-SYNC processor built in

Operating system: Windows 7 or higher version

Connect the cable: Use the DisplayPort interface

For more information about NVIDIA G-SYNC, please visit: <https://www.nvidia.cn/>

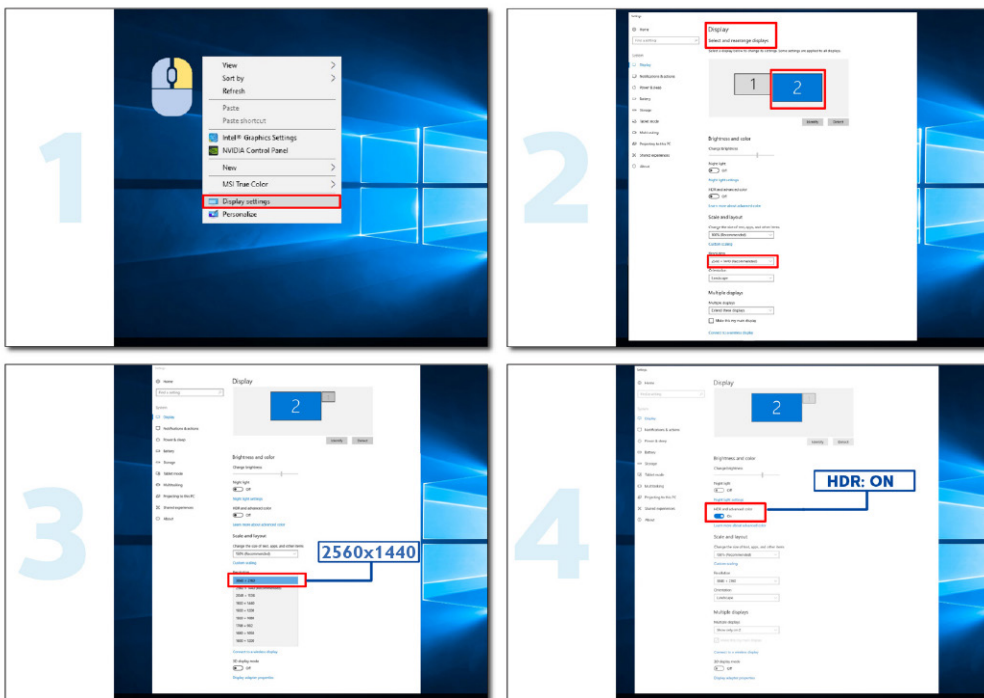
HDR

Compatible with HDR10 format input signals.

The monitor automatically enables HDR functionality, but you need a compatible player and content. For information and content on HDR-compatible devices, please contact the device manufacturer and content provider. When you do not need to automatically start the HDR function, please select "Turn Off" this function.

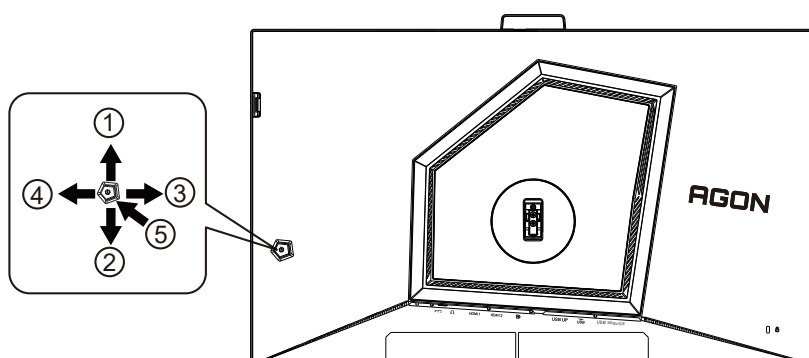
Note:

1. No special setting is needed for the DisplayPort/HDMI interface in WIN10 versions lower (older) than V1703.
2. Only the HDMI interface is available and the DisplayPort interface cannot function in WIN10 version V1703.
3. 3840x2160@50Hz/60Hz/120Hz is only for use on UHD players or devices such as Xbox/PS.
4. Display Settings:
 - a. Go to "Display Settings", select the resolution as 2560x1440, and turn HDR on.
 - b. To achieve the best HDR effect, change the resolution to 2560x1440(if this option is available).



Adjusting

Hotkeys



1	Source/Up
2	Brightness/Down
3	Preset Mode/Left
4	Light FX /Right
5	Power/ Menu/Enter

Power/Menu/Enter

Press the Power button to turn on the monitor.

When there is no OSD, Press to display the OSD or confirm the selection. Press about 2 seconds to turn off the monitor.

Brightness/Down

When there is no OSD, press “Down” key to open Brightness function, then press “Left” or “Right” key to adjust the brightness.

Preset Mode/Left

When there is no OSD, press “Left” key to open Preset Mode function, then press “Left” or “Right” key to select Preset Mode.

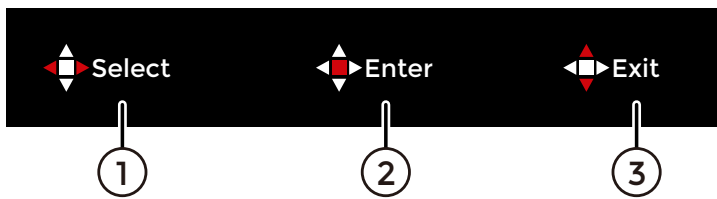
Light FX/Right

When there is no OSD, press “Right” key to active Light FX function.

Source/Up

When the OSD is closed, press Source/Auto/Up button will be Source hot key function.

OSD Key Guide (Menu)



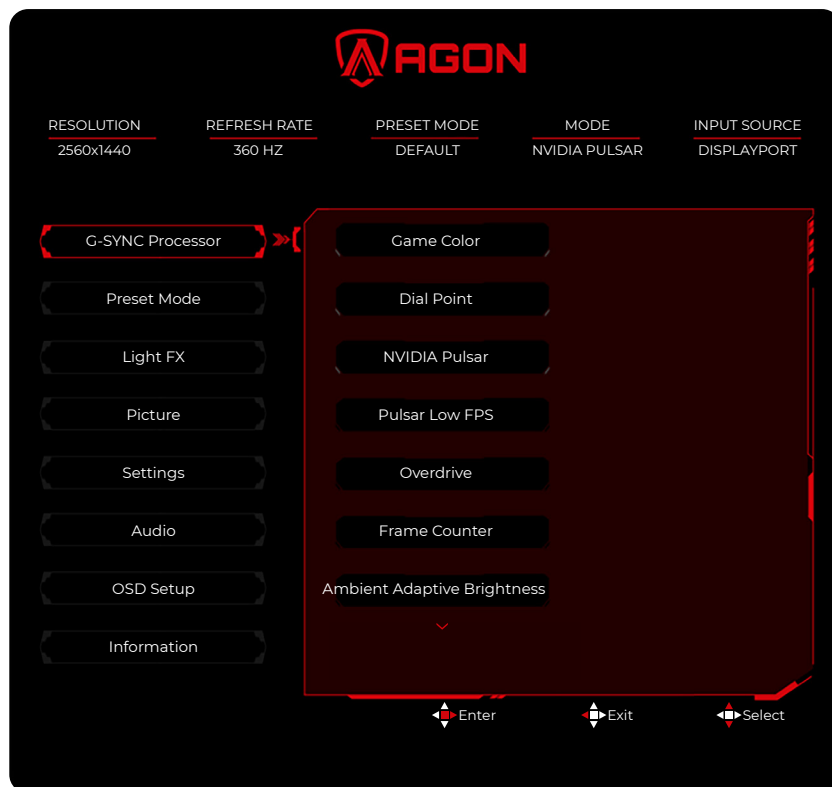
1	Select	According to the red key prompt on the OSD menu, press the corresponding key to select the menu that needs to be adjusted or make menu adjustments.
2	Enter	According to the red key prompt on the OSD menu, press the corresponding key to confirm the selection and enter the next level menu or menu adjustment confirmation.
3	Exit	According to the red key prompt on the OSD menu, press the corresponding key to return to the previous level menu or exit the menu.

Note:

The function definitions of the five-way joystick keys may vary depending on different OSD menu levels or options. Please operate according to the prompts of the red keys in the OSD menu.

OSD Menu

G-SYNC Processor



Game Color	0-200	The game color offers 0 to 200 levels of saturation adjustment to achieve a better picture.
Dial Point	Off/On	Turn on or off the game crosshair function. After the display is turned on or off, the game crosshair will automatically turn off. When the crosshair function is enabled, the crosshair will be placed in the center of the screen, helping players aim precisely when playing first-person shooter games.
NVIDIA Pulsar	Off/On	NVIDIA G-SYNC Pulsar technology combines VRR(Variable Refresh Rate) with ULMB2 technology (Ultra-Low Motion Blur 2), and through advanced backlight control technology, eliminates motion blur and enhances the clarity of fast-moving actions. Note: When the following conditions are met, "NVIDIA Pulsar" will be displayed for adjustment; otherwise, "ULMB2" will be displayed for adjustment Use an NVIDIA graphics card with G-SYNC enabled DisplayPort signal input Refresh rate ≥ 240Hz
ULMB2	Off/On	Enable the NVIDIA ULMB2 feature to enhance dynamic clarity.
Pulsar Low FPS	75-120	Adjust the strength of NVIDIA Pulsar. Note: When NVIDIA Pulsar is not selectable or set to off, the Pulsar Low FPS (low frame rate) item cannot be adjusted.

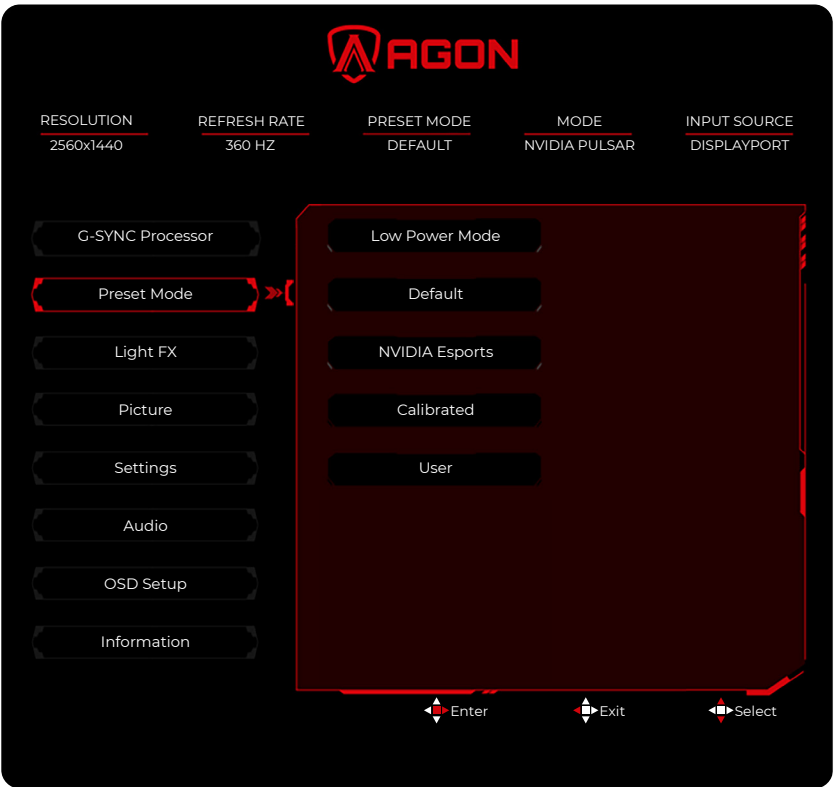
Overdrive	0-400	Adjust the response time. Note 1. If the user sets the OverDrive to the "400" level, blurry images may be displayed. Users can adjust the Overdrive level according to their preferences or set it to 0 to turn it off. 2. When NVIDIA Pulsar or ULMB2 is enabled, Overdrive cannot be adjusted.
Frame Counter	Off / Right-Up / Right-Down / Left-Up/ Left-Down	Display the vertical frequency of the current signal in real time.
Ambient Adaptive Brightness	Off/On	Environmental adaptive brightness: The display brightness can be adjusted adaptively according to the ambient light.
Ambient Adaptive Color	Off/On	Environmental adaptive color, which can adaptively adjust the display color according to the ambient light.
HDR Peak	400 / 500	Adjust the maximum brightness of HDR. Note: When the operating system enables HDR, "HDR Enhancement" can be adjusted.

Note:

When the "Preset Mode" is set to "Energy-saving Mode", the "Ambient Adaptive Brightness" and "Ambient Adaptive Color" items cannot be adjusted.

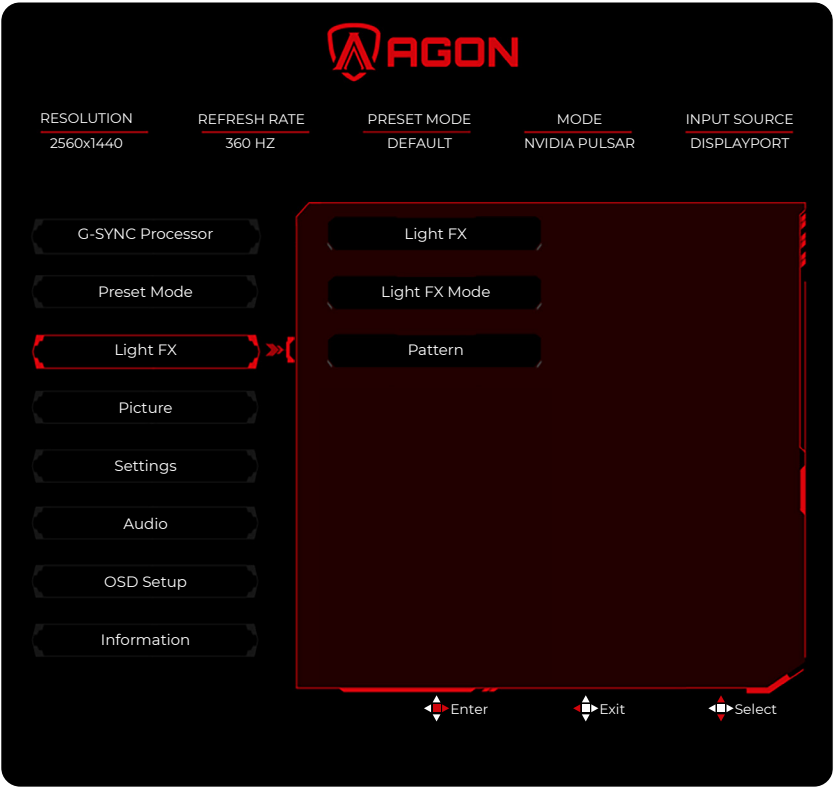
When the "Preset Mode" is set to the "Calibration Mode", the "Game Tone" item cannot be adjusted.

Preset Mode



Low Power Mode	Daily use can reduce the power consumption of the monitor.
Default	Default Settings of the display.
NVIDIA Esports	Default mode of the display.
Calibrated	It provides more accurate color representation in daily use.
User	The user's preference Settings are saved as user Settings.

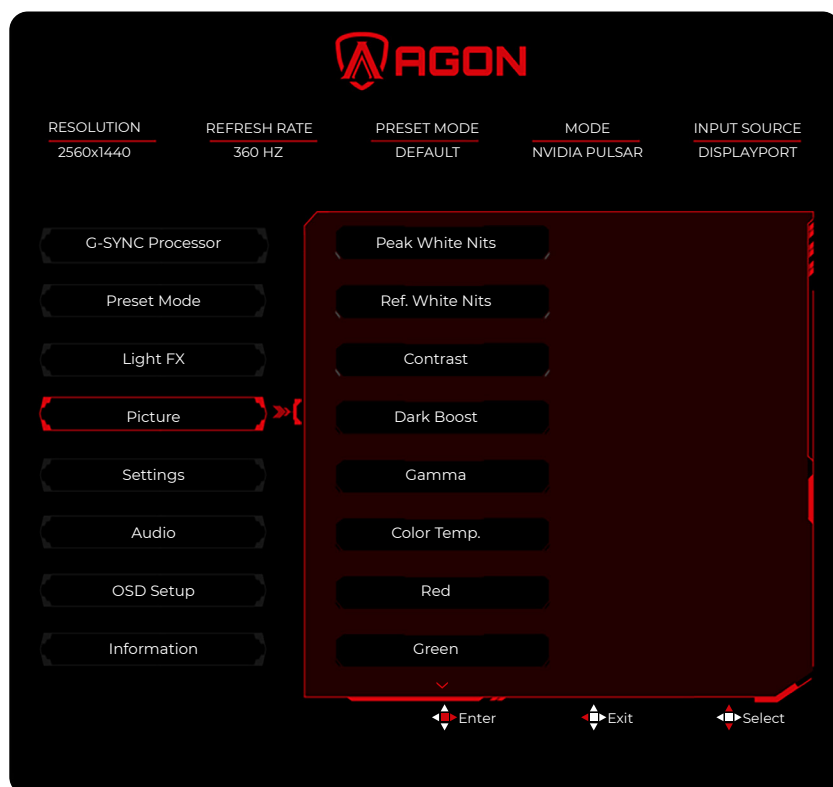
Light FX



Light FX	Off / Low / Medium / Strong	Choose the intensity of the e-sports ambient light.
Light FX Mode	Static / Dark Point Sweep/ Gradient Shift/ Spread Fill / Drip Fill/ Spreading Drip Fill / Breathing / Light Point Sweep / Zoom/ Rainbow/ Wave / Flashing / Demo	Select the e-sports ambient light mode.
Pattern	Red/ Green / Blue / Rainbow	Choose the pattern of the e-sports ambient light.

Note:
When the “Preset Mode” is set to “Low Power Mode”, the “Light FX” project cannot be adjusted.

Picture



Peak White Nits	50-500	Adjust the SDR display brightness. Note: When the operating system turns off HDR, "Peak White Nits" will be displayed for adjustment.
Ref. White Nits	80	HDR display brightness. Note: When HDR is enabled in the operating system, "Ref. White Nits" will be displayed, and the gray scale cannot be adjusted.
Contrast	0-100	Contrast adjustment.
Dark Boost	Off	Enhance the picture details in the dark or bright areas, and adjust the bright areas to avoid saturation.
	Level 1	
	Level 2	
	Level 3	
Gamma	1.8/2.0/2.2/2.4/2.6	Regulate gamma.
Color Temp.	6500K/7300K/9300K/ User	Adjust the color temperature.
Red	0-150	Red gain from Digital-register.
Green	0-150	Green gain from Digital-register.
Blue	0-150	Blue gain from Digital-register.
R.Saturation	0-255	R.Saturation gain from Digital-register.
G.Saturation	0-255	G.Saturation gain from Digital-register.
B.Saturation	0-255	B.Saturation gain from Digital-register.

C.Saturation	0-255	C.Saturation gain from Digital-register.
M.Saturation	0-255	M.Saturation gain from Digital-register.
Y.Saturation	0-255	Y.Saturation gain from Digital-register.
Color Space	Panel Native	Standard color space panel.
	sRGB	Recall sRGB Color Temperature from EEPROM.
Image Ratio	Full / Aspect	Adjust the image ratio. Full screen: Enlarge the input image to full screen display. Vertical full screen: The preset resolution is 2560x1440. The image fills the screen as much as possible according to the original aspect ratio without geometric distortion.

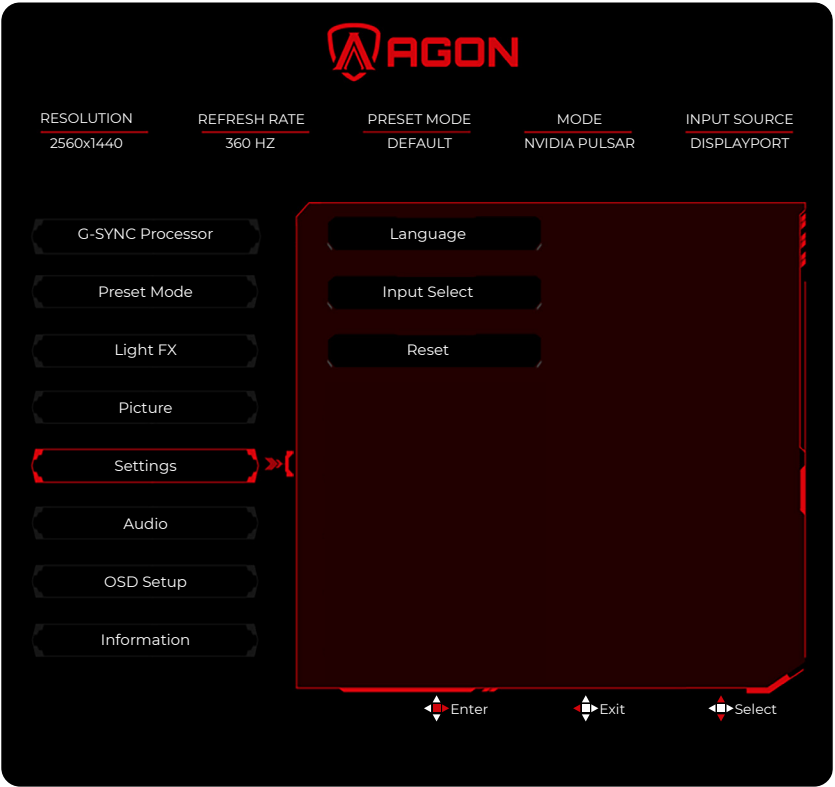
Note:

1. Peak White Nits sets the maximum brightness of the display, which is determined by the range preset mode and the NVIDIA Pulsar status.

2. When the Preset Mode is Calibrated, except for "Peak White Nits" and "Image Ratio" under Picture, all other options are highlighted and cannot be selected.

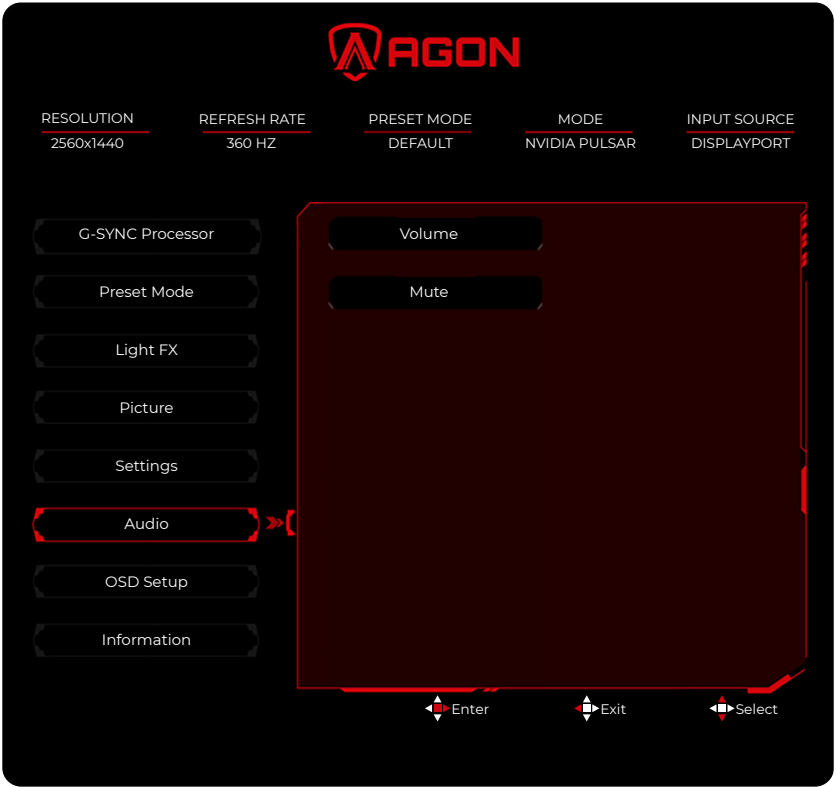
When HDR is enabled, under Picture, except for "Contrast", "DarkBoost", and "Saturation", all other options should not be highlighted.

Settings



Language		Select the OSD language.
Input Select	Auto/HDMI1/HDMI2/DisplayPort	Select the source of the input signal.
Reset	No/ Yes	Reset the menu to the default.

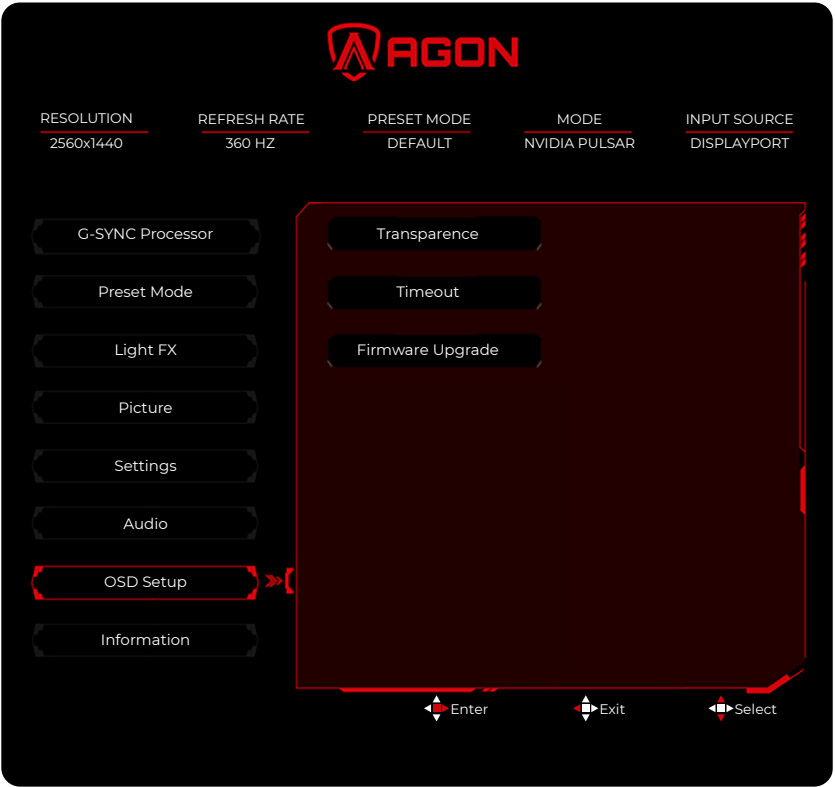
Audio



Volume	0-28	Volume Adjustment.
Mute	Off/On	Mute the volume.

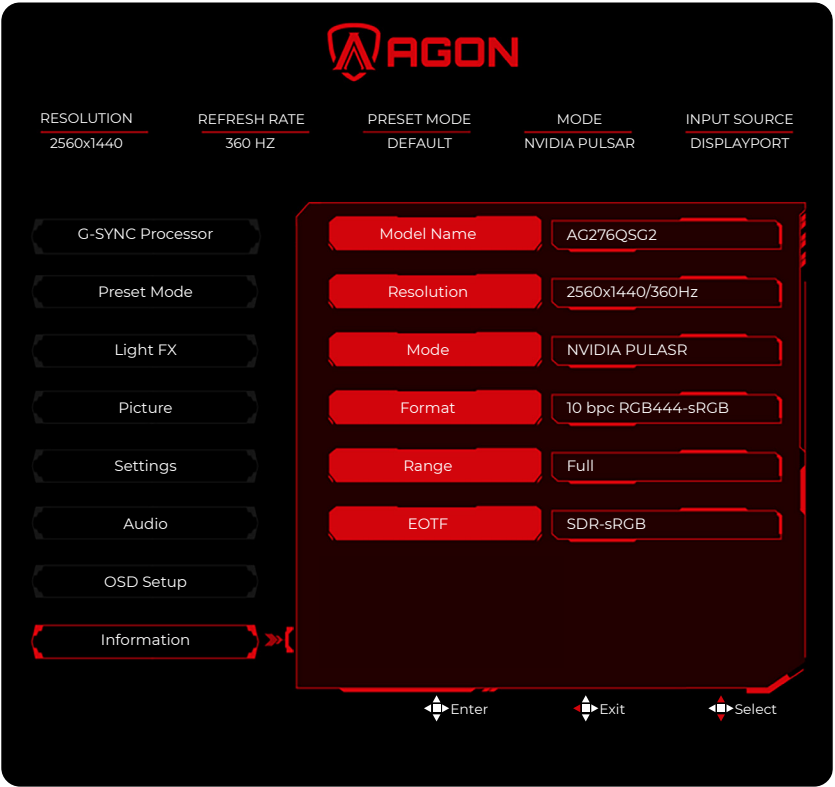
Note:
When the "Preset Mode" is set to "Low Power Mode", all items of "Volume" cannot be adjusted.

OSD Setup



Transparence	0-125	Adjust the transparence of OSD.
Timeout	5-120	Adjust the OSD Timeout.
Firmware Upgrade	No/ Yes	Upgrade the FW via USB.

Information



LED Indicator


Status	LED Color
Full Power Mode	White
Active-off Mode	Orange

Troubleshoot

Problem & Question	Possible Solutions
Power LED Is Not ON	Make sure the power button is ON and the Power Cord is properly connected to a grounded power outlet and to the monitor.
No images on the screen	<ul style="list-style-type: none"> • Is the power cord connected properly? Check the power cord connection and power supply. • Is the cable connected correctly? (Connected using the DisplayPort cable) Check the DisplayPort cable connection. (Connected using the HDMI cable) Check the HDMI cable connection. • If the power is on, reboot the computer to see the initial screen (the login screen), which can be seen. If the initial screen (the login screen) appears, boot the computer in the applicable mode (the safe mode for Windows 7/8/10) and then change the frequency of the video card. (Refer to the Setting the Optimal Resolution) If the initial screen (the login screen) does not appear, contact the Service Center or your dealer. • Can you see "Input Not Supported" on the screen? You can see this message when the signal from the video card exceeds the maximum resolution and frequency that the monitor can handle properly. Adjust the maximum resolution and frequency that the monitor can handle properly. • Make sure the AOC Monitor Drivers are installed.
Picture Is Fuzzy & Has Ghosting Shadowing Problem	Adjust the Contrast and Brightness Controls. Press to auto adjust. Make sure you are not using an extension cable or switch box. We recommend plugging the monitor directly to the video card output connector on the back.
Picture Bounces, Flickers Or Wave Pattern Appears In The Picture	Move electrical devices that may cause electrical interference as far away from the monitor as possible. Use the maximum refresh rate your monitor is capable of at the resolution you are using.
Monitor Is Stuck In Active Off-Mode"	The Computer Power Switch should be in the ON position. The Computer Video Card should be snugly fitted in its slot. Make sure the monitor's video cable is properly connected to the computer. Inspect the monitor's video cable and make sure no pin is bent. Make sure your computer is operational by hitting the CAPS LOCK key on the keyboard while observing the CAPS LOCK LED. The LED should either turn ON or OFF after hitting the CAPS LOCK key.
Missing one of the primary colors (RED, GREEN, or BLUE)	Inspect the monitor's video cable and make sure that no pin is damaged. Make sure the monitor's video cable is properly connected to the computer.
Picture has color defects (white does not look white)	Adjust RGB color or select desired color temperature.
Horizontal or vertical disturbances on the screen	Use Windows 7/8/10 shut-down mode to adjust CLOCK and FOCUS. Press to auto-adjust.
Regulation & Service	Please refer to Regulation & Service Information which is in the CD manual or www.aoc.com (to find the model you purchase in your country and to find Regulation & Service Information in Support page.

Specification

General Specification

Panel	Model name	AG276QSG2	
	Driving system	TFT Color LCD	
	Viewable Image Size	68.4 cm diagonal	
	Pixel pitch	0.2328mm(H) x 0.2328mm(V)	
	Display Color	16.7M Colors	
Others	Horizontal scan range	30k-182kHz (HDMI) 30k~510kHz (DisplayPort)	
	Horizontal scan Size(Maximum)	595.968 mm	
	Vertical scan range	24~120Hz (HDMI) 30~360Hz (DisplayPort)	
	Vertical Scan Size(Maximum)	335.232 mm	
	Optimal preset resolution	2560 x 1440@60Hz	
	Max resolution	2560 x 1440@120Hz (HDMI) 2560 x 1440@360Hz (DisplayPort)	
	Plug & Play	VESA DDC2B/CI	
	Power Source	19.5V  6.93A	
	Power Consumption	Typical Setting ^[1]	59W ^[2]
		Max. (Brightness = 100, contrast =100)	≤147W ^[2]
		Standby mode	≤0.5W
Physical Characteristics	Connector Type	HDMIx2/DisplayPort/USBx3/USB Upstream/Earphone/micro USB	
	Signal Cable Type	Detachable	
Environmental	Temperature	Operating	0°C~ 40°C
		Non-Operating	-25°C~ 55°C
	Humidity	Operating	10% ~ 85% (non-condensing)
		Non-Operating	5% ~ 93% (non-condensing)
	Altitude	Operating	0m~ 5000m (0~ 16404ft)
		Non-Operating	0m~ 12192m (0~ 40000ft)

[1]: Typical power consumption is measured in high-performance mode.
(as defined by the manufacturer)

[2]: The power specification is the power consumption of the display (including the power adapter)
measured at the input of the power adapter.



Preset Display Modes

STANDARD	RESOLUTION (±1Hz)	HORIZONTAL FREQUENCY(kHz)	VERTICAL FREQUENCY(Hz)
VGA	640X480@60Hz	31.47	59.94
SVGA	800X600@60Hz	37.88	60.32
XGA	1024X768@60Hz	48.36	60.00
FHD	1920x1080@120Hz	137.26	119.98
FHD	1920X1080@240Hz (DisplayPort)	291.58	239.98
FHD	1920X1080@360Hz (DisplayPort)	466.10	359.92
QHD	2560X1440@60Hz	88.79	59.95
QHD	2560X1440@120Hz	183.00	120.00
QHD	2368X1332@240Hz (DisplayPort)	359.47	239.97
QHD	2368X1332@360Hz (DisplayPort)	574.86	359.96
QHD	2560X1440@240Hz (DisplayPort)	388.51	239.97
QHD	2560X1440@360Hz (DisplayPort)	569.85	359.98

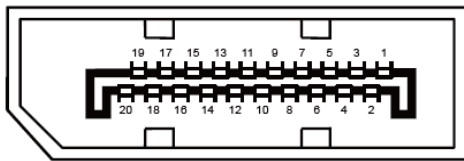
Note: According to the VESA standard, there may be a certain error (+/-1Hz) when calculating the refresh rate (field frequency) of different operating systems and graphics cards. In order to improve compatibility, the nominal refresh rate of this product has been rounded off. Please refer to the actual product.

Pin Assignments



19-Pin Color Display Signal Cable

Pin No.	Signal Name	Pin No.	Signal Name	Pin No.	Signal Name
1.	TMDS Data 2+	9.	TMDS Data 0-	17.	DDC/CEC Ground
2.	TMDS Data 2 Shield	10.	TMDS Clock +	18.	+5V Power
3.	TMDS Data 2-	11.	TMDS Clock Shield	19.	Hot Plug Detect
4.	TMDS Data 1+	12.	TMDS Clock-		
5.	TMDS Data 1Shield	13.	CEC		
6.	TMDS Data 1-	14.	Reserved (N.C. on device)		
7.	TMDS Data 0+	15.	SCL		
8.	TMDS Data 0 Shield	16.	SDA		



20-Pin Color Display Signal Cable

Pin No.	Signal Name	Pin No.	Signal Name
1	ML_Lane 3 (n)	11	GND
2	GND	12	ML_Lane 0 (p)
3	ML_Lane 3 (p)	13	CONFIG1
4	ML_Lane 2 (n)	14	CONFIG2
5	GND	15	AUX_CH(p)
6	ML_Lane 2 (p)	16	GND
7	ML_Lane 1 (n)	17	AUX_CH(n)
8	GND	18	Hot Plug Detect
9	ML_Lane 1 (p)	19	Return DP_PWR
10	ML_Lane 0 (n)	20	DP_PWR

Plug and Play

Plug & Play DDC2B Feature

This monitor is equipped with VESA DDC2B capabilities according to the VESA DDC STANDARD. It allows the monitor to inform the host system of its identity and, depending on the level of DDC used, communicate additional information about its display capabilities.

The DDC2B is a bi-directional data channel based on the I2C protocol. The host can request EDID information over the DDC2B channel.