

MMD 24B31H, 27B31H Mechanical Instructions

1.1. Suggest Tools

Here are some tools that can be used for the LCD monitor's service and repair.

Philips-head Screwdriver

Use a Philips-head screwdriver to fasten/remove the K- or B-typed screws



P/N : N/A

Gloves

To protect LCD Panel and your hand



P/N: (L) N/A (M) N/A

C/D Disassembly Tool

Use C/D Disassembly Tool to open cosmetic cover and avoid scratch.



P/N: N/A

Spacer Screwdriver

Use a spacer screwdriver to fasten/remove spacer screws or hex screws.



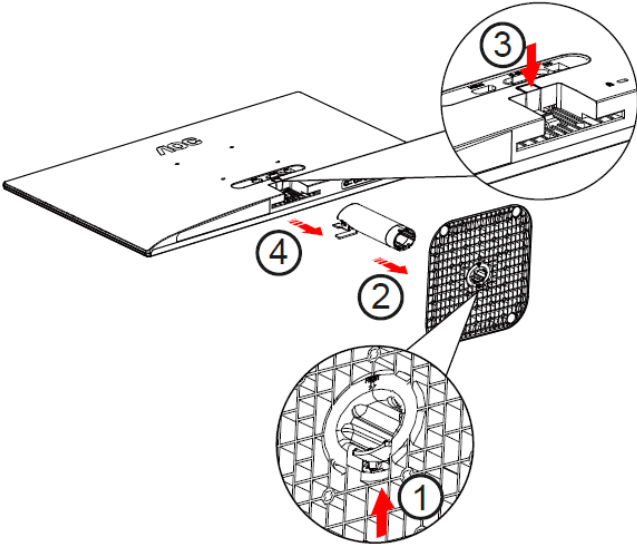
P/N: N/A

Tape:

During the disassembly process, the local service center will provide new tapes for replacement if necessary.



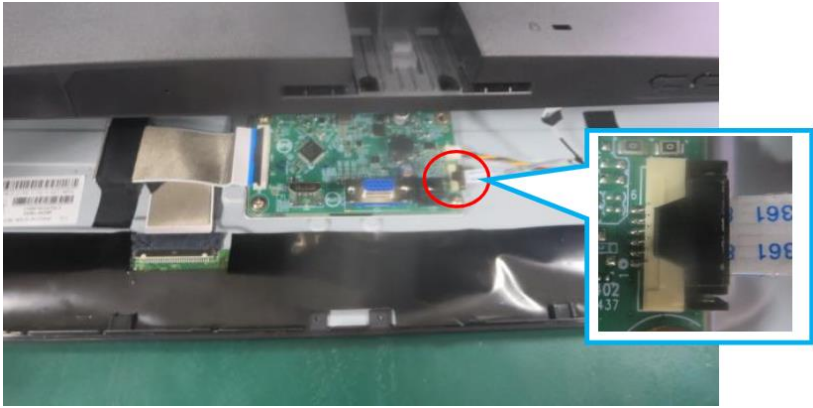
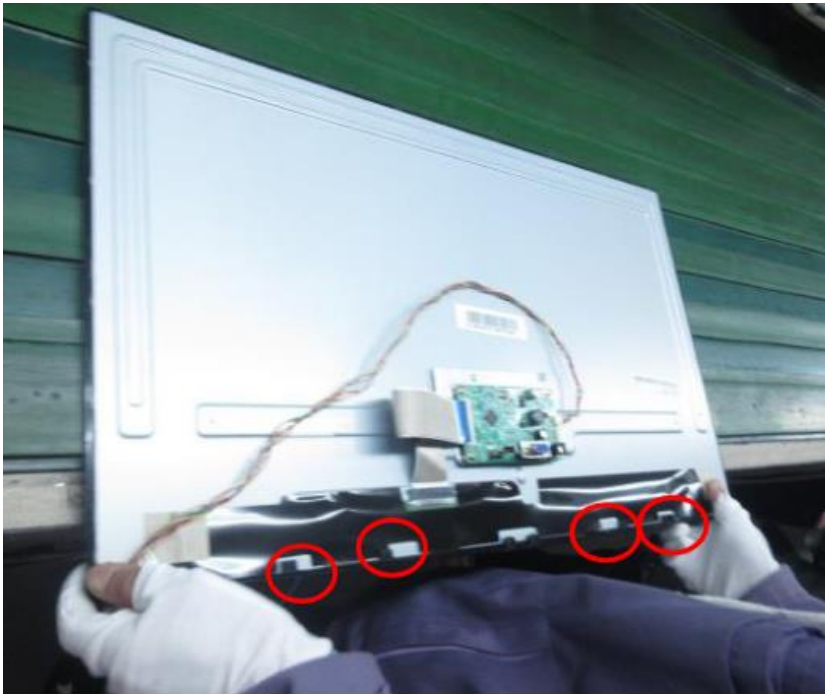
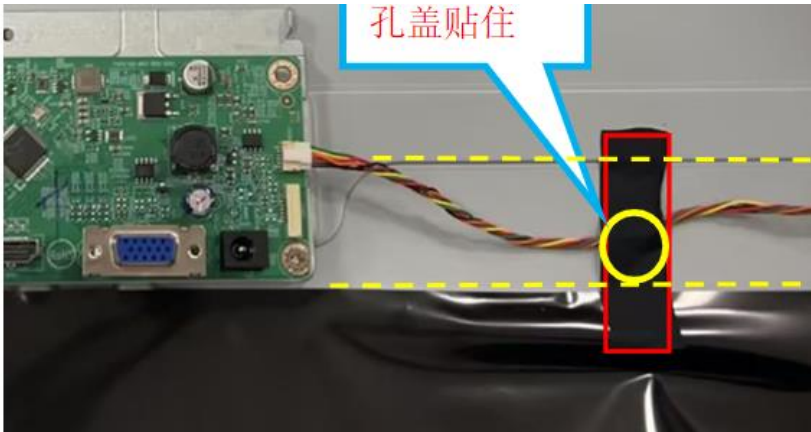
1.2 Disassembly Procedure

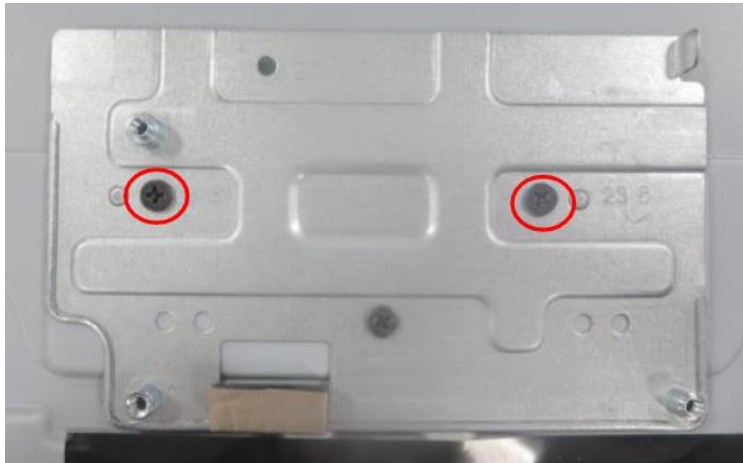
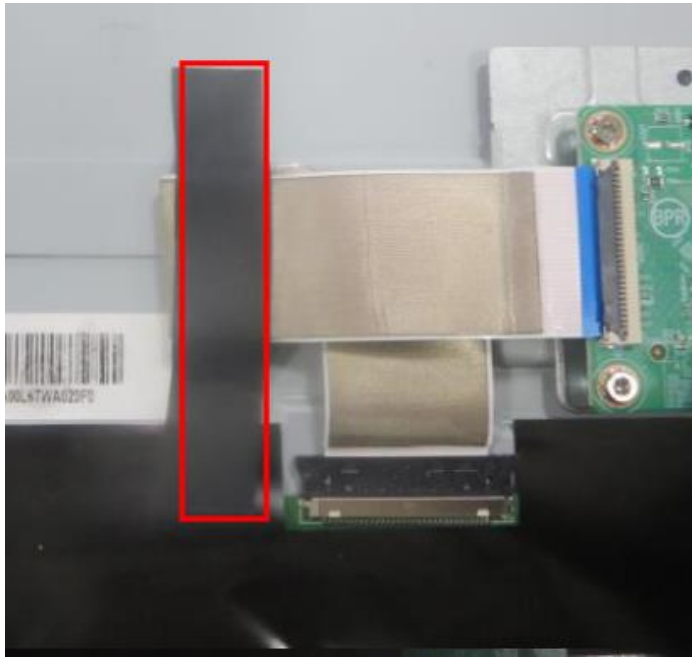
Step	Figure	Description
Remove base and stand		<ul style="list-style-type: none">● Push the base downward● Press the release button to detach the stand.

Remove rear cover



- Release screws.
- Use the tool to disassemble the rear cover.
- Disconnect cables between panel and cover.

		
Remove deco		<ul style="list-style-type: none">● Disassemble the deco.
Remove board and BKT		<ul style="list-style-type: none">● Tear out tapes● Release screws.● Disconnect all the cables.





**Remove key
board**

