

I-Menu

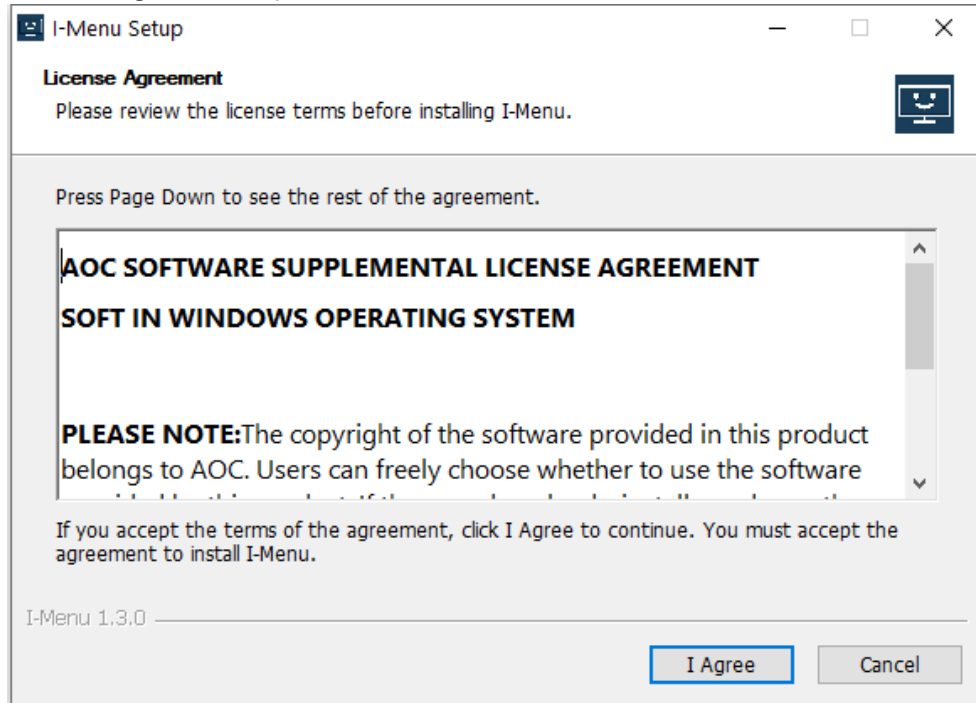
User Manual

Catalogue

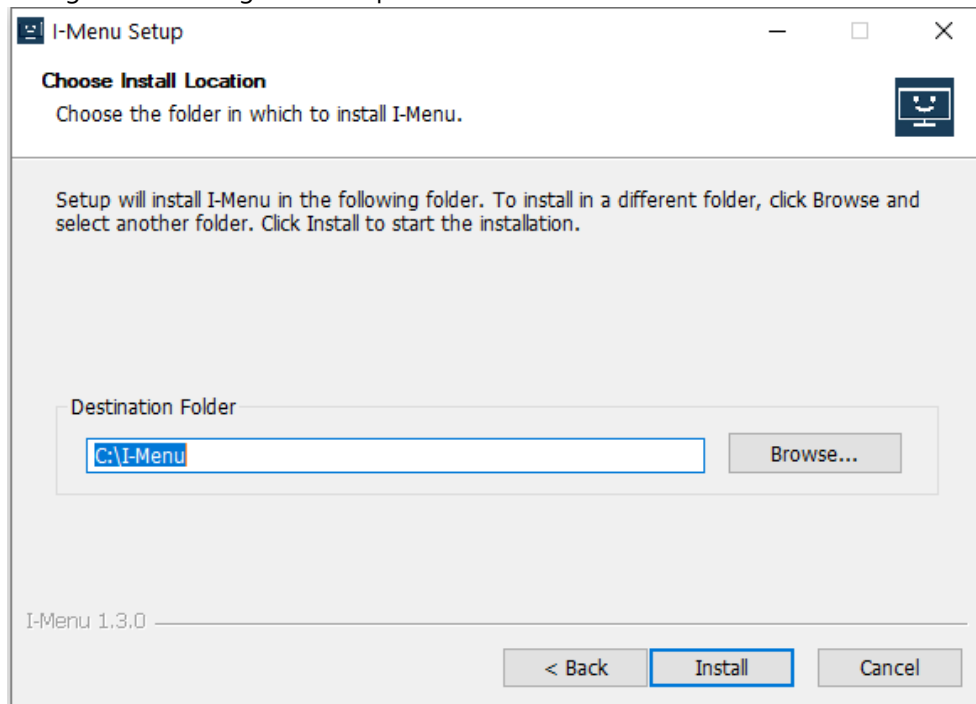
| | |
|------------------------------|----|
| 1 Windows Installation | 2 |
| 2 Open Methods | 3 |
| 3 Software Update | 4 |
| 4 Home (2K11) | 4 |
| 5 Home (2K23) | 18 |
| 6 Tray | 32 |

1 Windows Installation

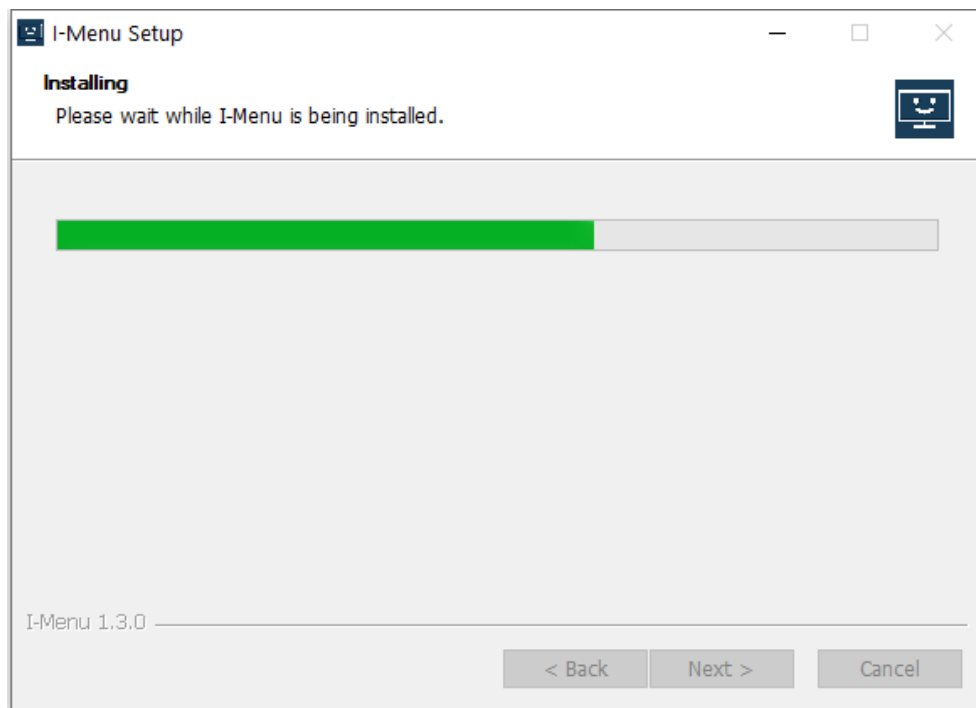
1. Obtain the latest version of the AOC I-Menu executable file from the official website. Locate the downloaded executable file (.exe) and double-click it to start the installation process.
2. Review the End User License Agreement (EULA). To proceed, select "I Agree" to acknowledge and accept the terms and conditions.



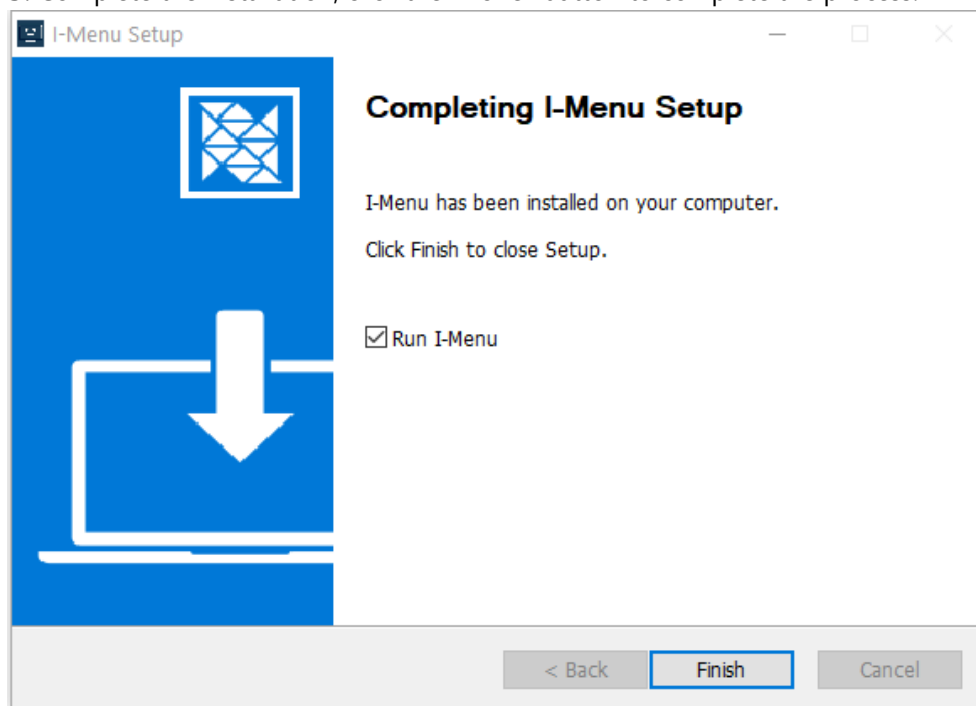
3. Select the installation folder. Click the "Browse" button to open the "Browse for Folder" dialog box and navigate to the preferred folder.



4. Initiate the installation by clicking the "Install" button. The installation process will start, and progress will be displayed on the screen.



5. Complete the installation, click the "Done" button to complete the process.



2 Open Methods

There are 3 ways to access the I-Menu application.

① Start Menu> I-Menu

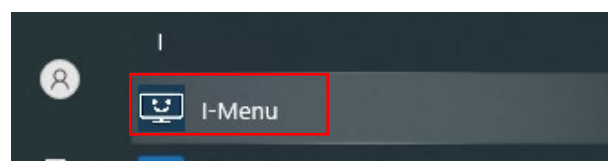


Figure 2-Touchpoint Start Menu

- ② Taskbar>Right click on the taskbar icon



Figure 3-Touchpoint Task Tray

- ③ Shortcut on Desktop

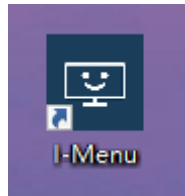


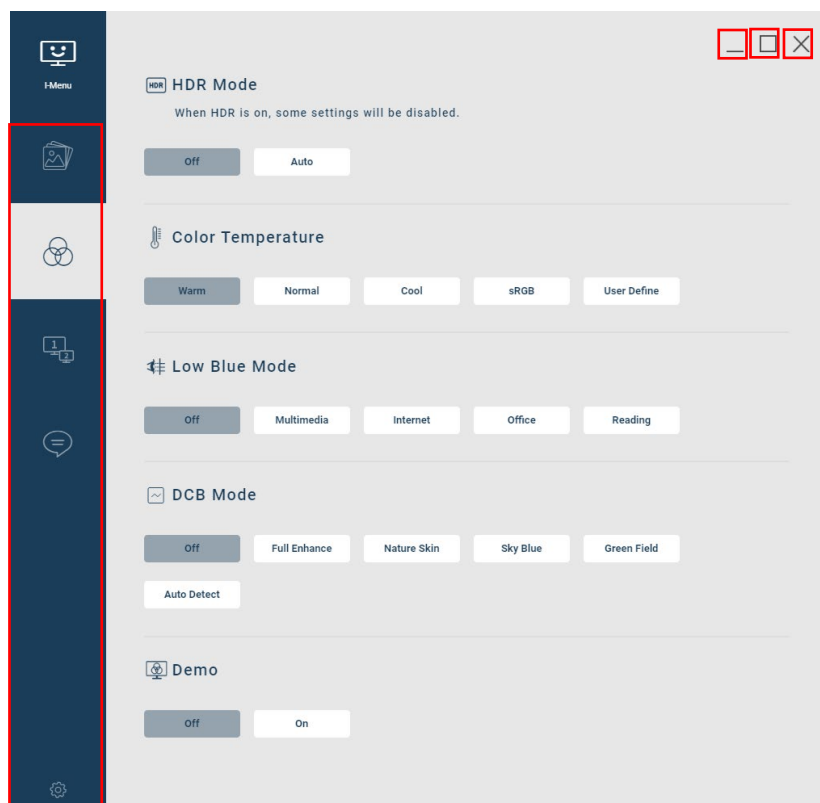
Figure 4-Touchpoint Short Cut on Desktop

3 Software Update

- When you enter the I-Menu home page, the software will automatically check for updates.
- Note: If there is no network connection, I-Menu will not be able to detect updates.

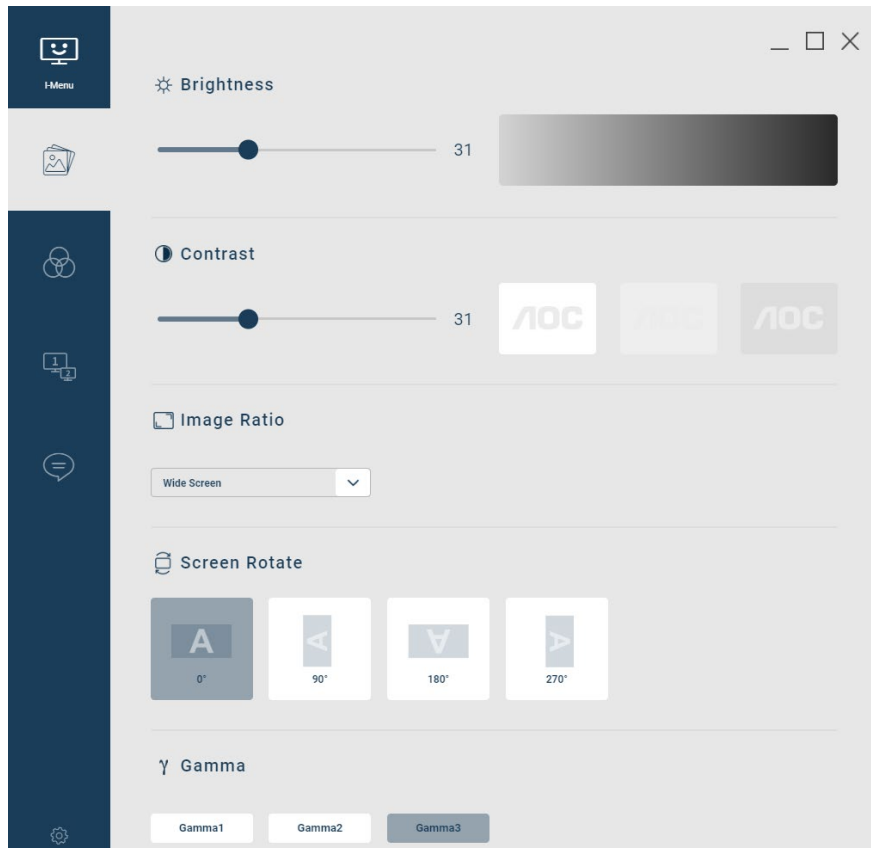
4 Home (2K11)

- Open I-Menu application and enter the home page.



- 1) **Close**—— Click the **Close** button to close the application interface, the actual application is still running in the background.
- 2) **Maximize/Restore**——Click to switch the interface to zoom in/restore the display.
- 3) **Minimize**——Click to minimize the interface to the toolbar.
- 4) Navigation: **Picture/Color/Language/Screen+/Settings**

4.1 Picture



1) Brightness

- Slider 0-100, default 50
- Adjust the output of the backlight to reduce eyestrain.

2) Contrast--Slider

- Slider 0-100, default 50
- Adjust the contrast ratio between the luminance of the brightest white and darkest black.

3) Picture Format

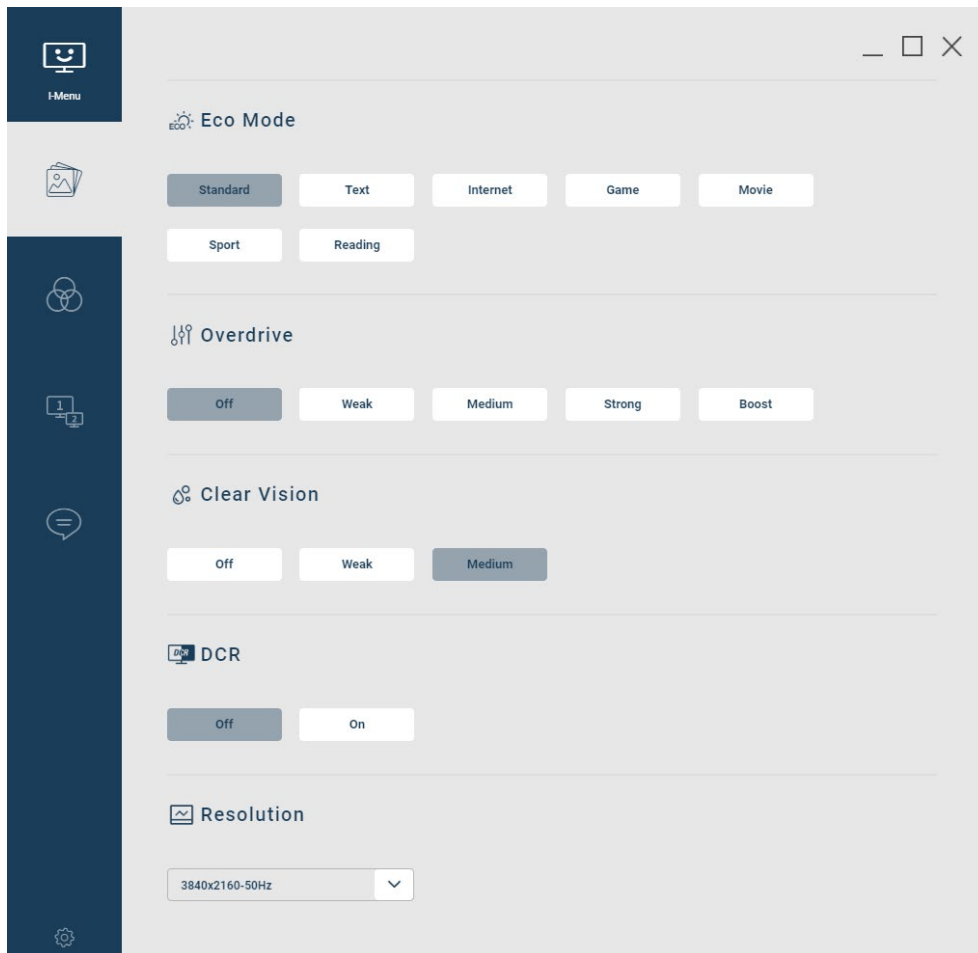
- Screen format selection in different proportions.
- The first option is selected by default.

4) Screen Rotate--Radio option

- 4 screen rotation direction options: 0°,90°,180°,270°
- Auto is selected by default

5) Gamma--Radio option

- The gamma level adjusts pixel luminance at each brightness level. Lower gamma increases brightness making shadows look brighter and can result in a flatter, washed out image with brighter highlights. Higher gamma reduces brightness making it more difficult to see details in shadows.



6) ECO Mode

- Options: Standard, Text, Internet, Game, Movie, Sport, Reading
- Standard by default

7) Overdrive

- Options: Off, Weak, Medium, Strong, Boost
- Off by default

8) Clean Vision

- Options: Off, Weak, Medium, Strong, Boost
- Off by default

9) DCR

- Dynamic Contrast Ratio enables the monitor to adjust dynamic range according to the brightest and darkest pixels currently displayed.
- Default is Off.

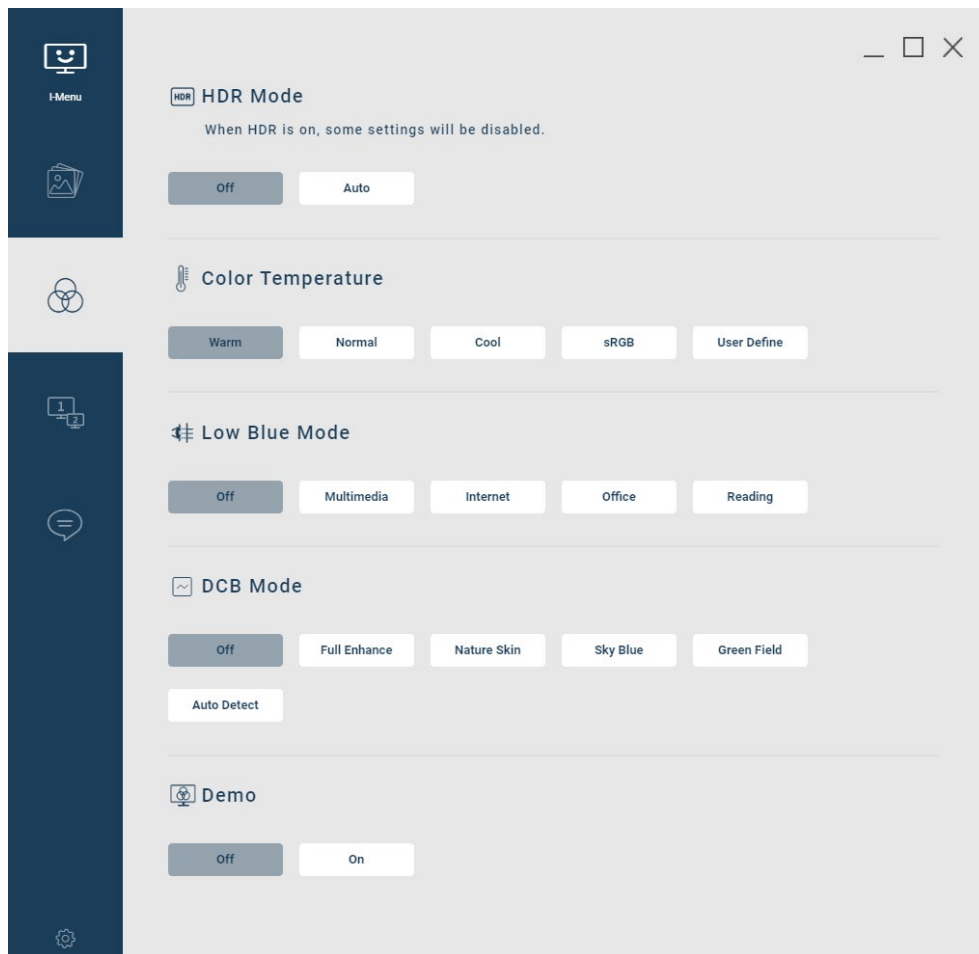
10) Volume

- Adjust Volume Slider 0 (off) – 100 (maximum).
- Mute
 - Check: Turns off sound. Drag the progress bar to unmute
 - Uncheck: Turns on sound, and enables volume slider. The volume is restored to the state before muting.

11) Resolution

- The dropdown list shows all supported resolutions.
- Effective immediately after switching.

4.2 Color



1) HDR Mode

- The options are Off, Picture, Movie, Game. Displayed according to the actual device.
- When HDR is on, some setting will be disabled.

2) Color temperature

- Color temperature is a way to describe the light appearance provided by a light bulb.
- The first option is selected by default

User Define



- Three sliders of red, green and blue
- Slider 0-100, default 50

- Slider to increase/decrease the color value

a) Undo

- Return to the original settings state

3) Low blue Mode

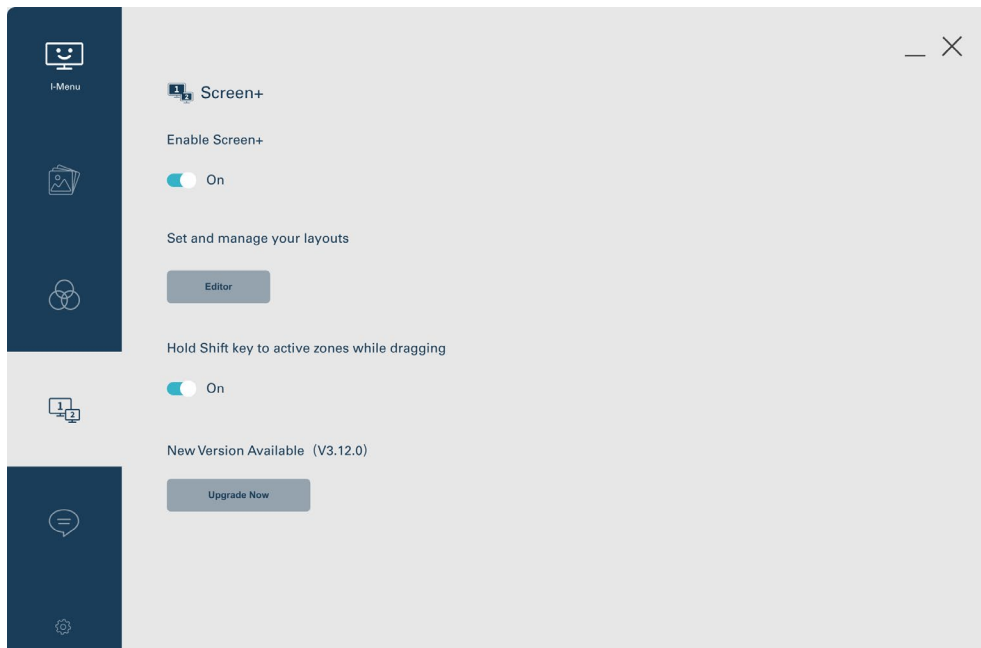
- Off
 - Turns Off Low Blue Mode, no filtering of blue light.
- Multimedia
 - Turns on Low Blue Multimedia Mode, increased filtering of blue light.
- Internet
 - Turns on Low Blue Internet Mode
- Office
 - Turns on Low Blue Office Mode
- Reading
 - Turns on Low Blue Reading Mode, maximum filtering of blue light.
- Off by default

4) DCB Mode

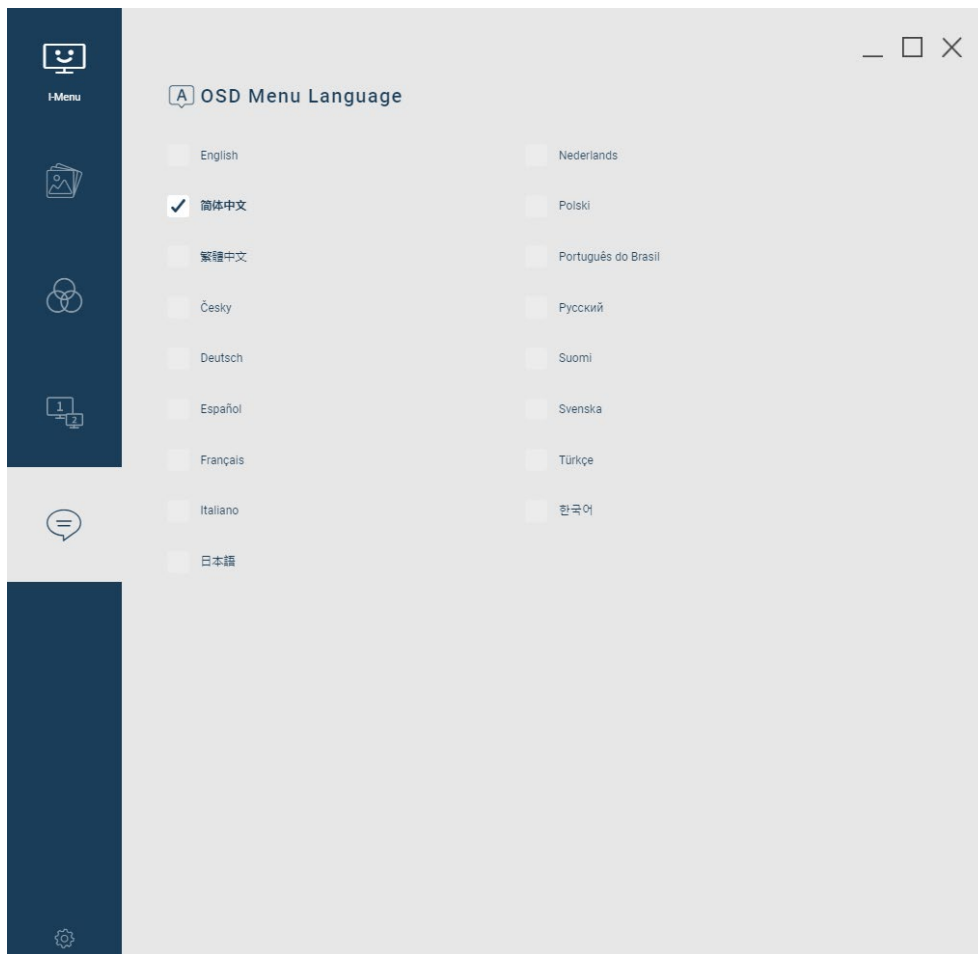
- Dynamic Color Boost enhances specific colors in the palette. Nature Skin enhances skin tone colors, Green Field enhances greens like grass, and Sky-blue enhances blues like the sky.
- Selection for Off, Full Enhance, Nature Skin, Green Field, Sky-blue, Auto Detect.
- Off by default.

5) DCB Demo

- **On/Off**



4.3 Language



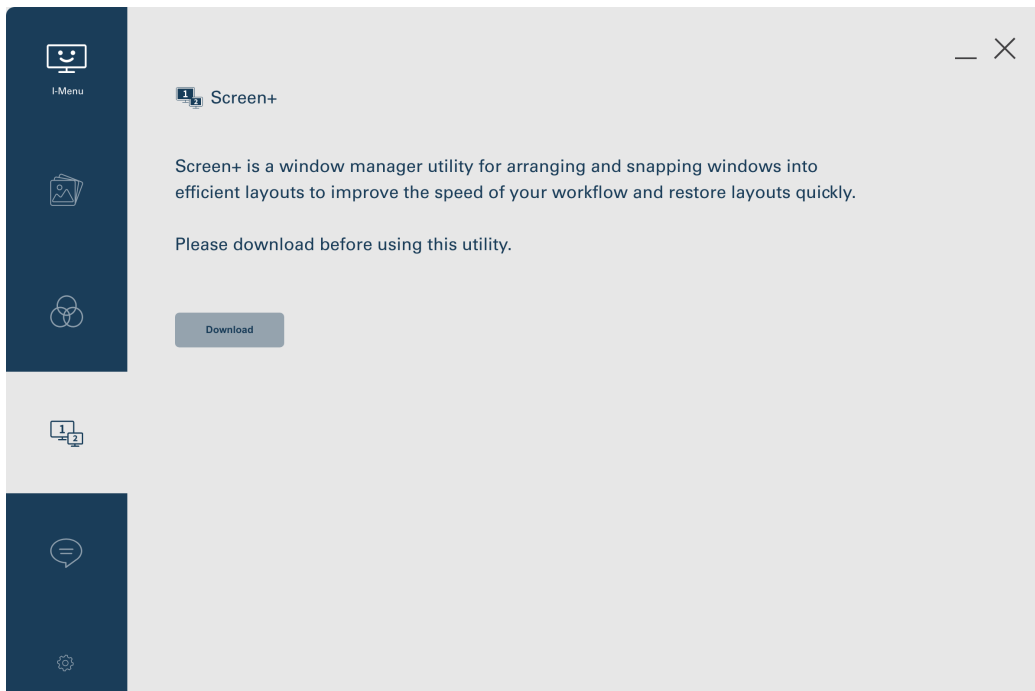
- Click the appropriate language button to switch OSD Menu languages immediately.

4.4 Screen+

Screen+ enables you to easily arrange the open windows in one of the predefined layouts by dragging them in the zones.

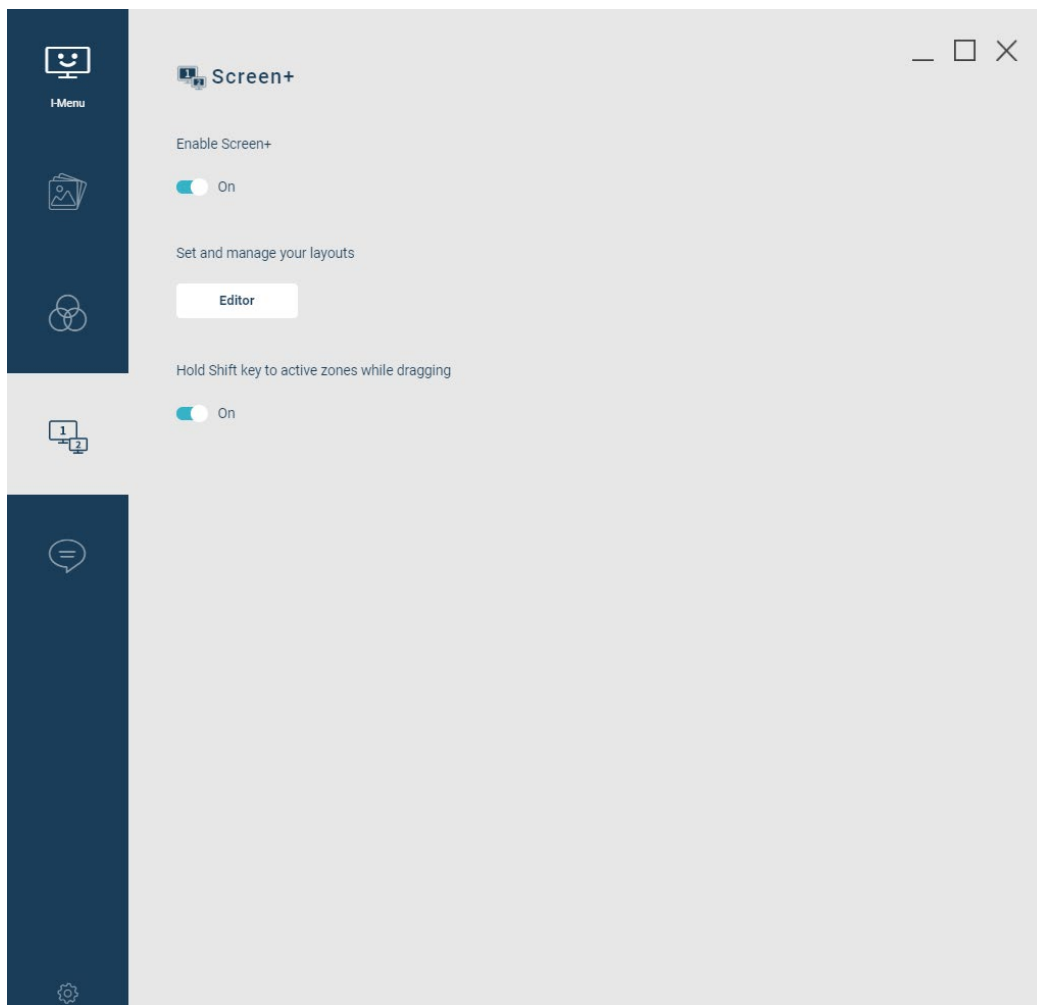
1) Download Screen+

- You only need to download it for the first time, and you can use it directly afterwards.



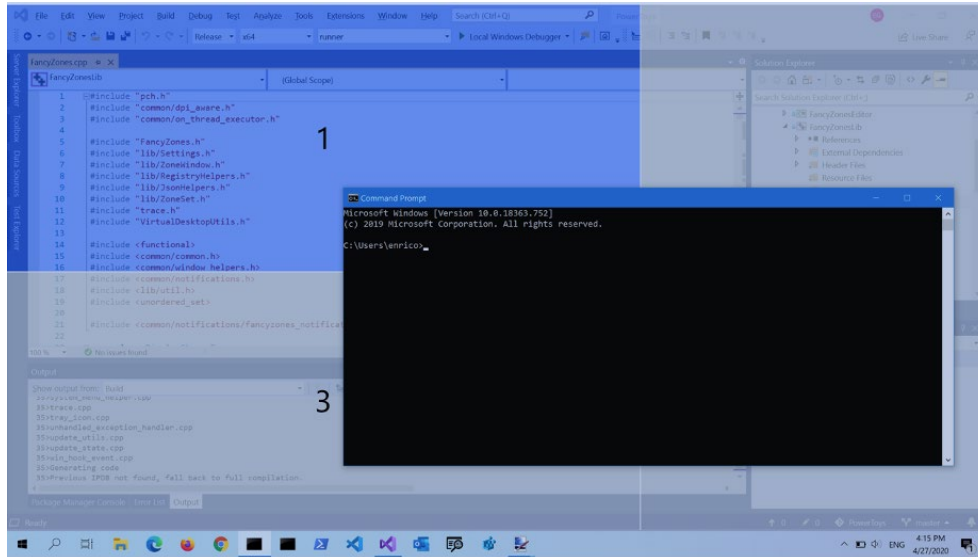
2) Enable Screen+

- Enable desktop layout settings.



3) Snapping to a single zone with the mouse

- Drag the window. By default, you will also need to press and hold the Shift key (This setting can be disabled). You'll see the zones appear. As you move your mouse, hovering over a zone will highlight that zone.
- If "Hold Shift key to activate zones while dragging" is disabled, zones will appear right after you start dragging the window.



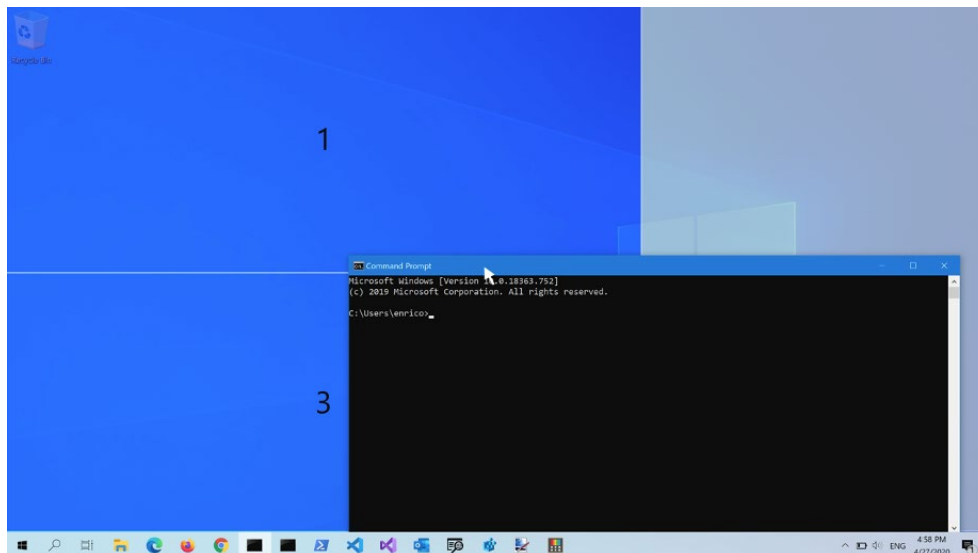
4) Snapping to multiple zones

Snapping to two zones by edge hovering

- If two zones are adjacent, a window can be snapped to the sum of their area (rounded to the minimum rectangle that contains both). When the mouse cursor is near the common edge of two zones, both zones are activated simultaneously, allowing you to drop the window into both zones.

Snapping to multiple zones with the mouse + keyboard

- You can drag the window until one zone is activated, then press and hold the **Control** key while dragging the window to select multiple zones.

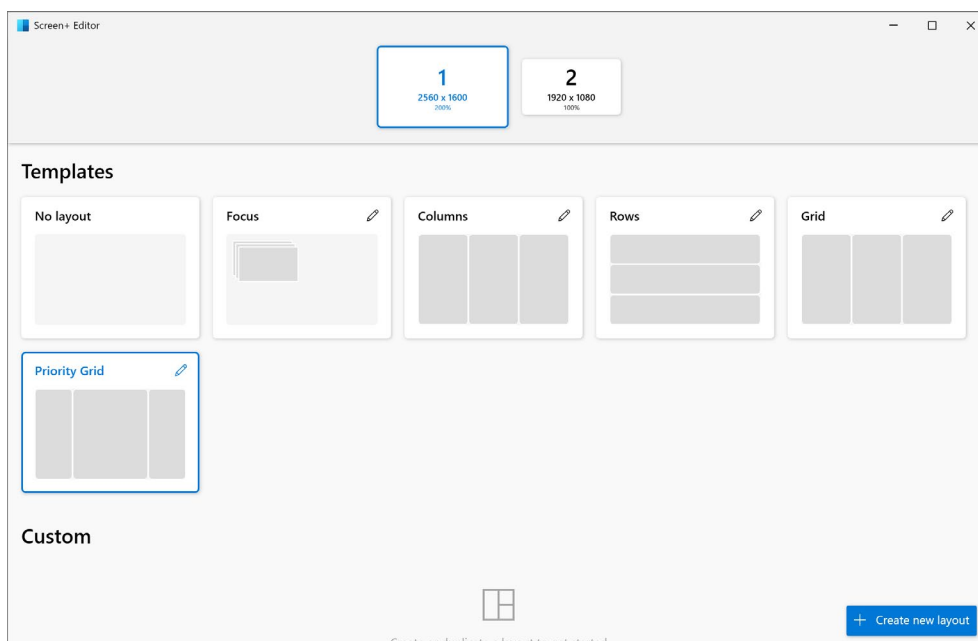


6) Set and manage your layouts

- Click **Edit** to launch zones editor.

Choose a layout

- When first launched, the zones editor presents a list of layouts that can be adjusted by how many windows are on the monitor. Selecting a layout shows a preview of that layout on the monitor. The selected layout is applied automatically. Double-clicking a layout will apply it and automatically close the editor.

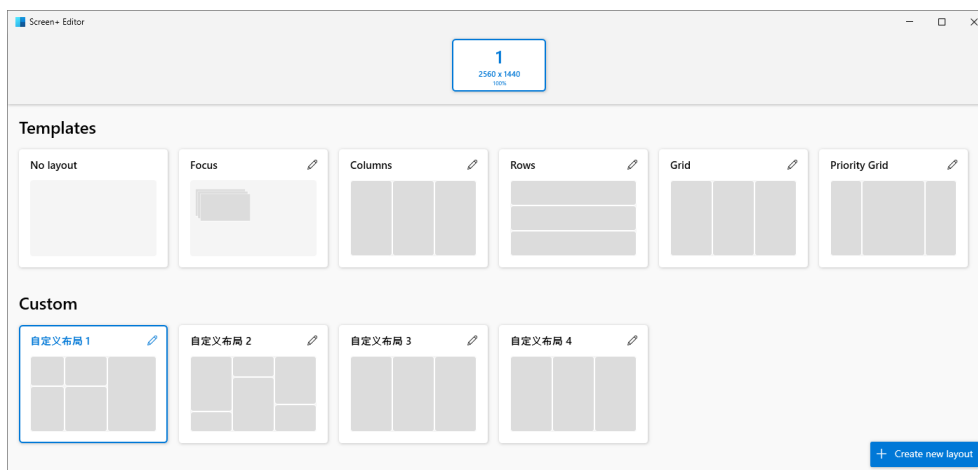


Edit zone layout

- Click the pencil icon for a layout you want to modify.

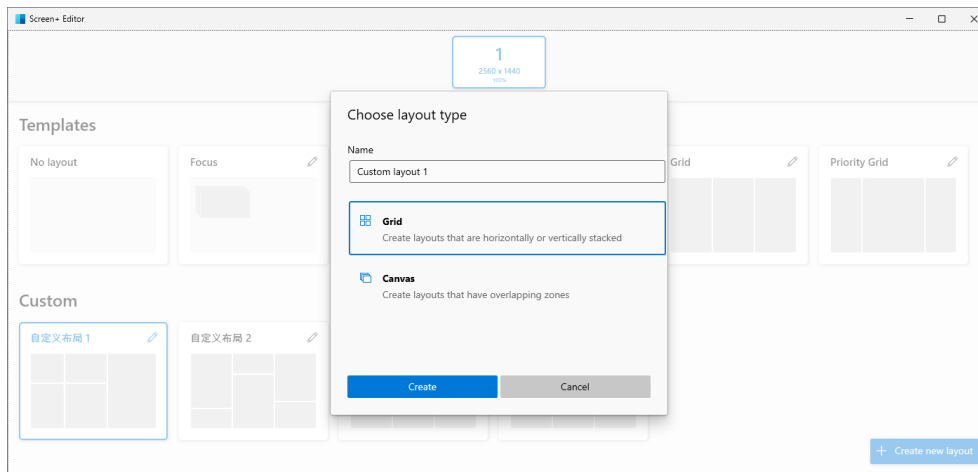


- First, you can increase or decrease the **number of zones**. You're adding or subtracting the number of rows for a row layout. You're adding or subtracting the number of columns for a column or grid layout. Click the field for Number of zones and either click the up or down arrow or type a specific number.
- To increase or decrease the space, or padding, around each zone, click in the field for **Space around zones** and click the up or down arrow or type a specific number. Turn off the switch completely to eliminate the spacing.
- The **Highlight distance** adjacent zones enable you to set a custom value for the amount of space between zones until they snap together, or before both are highlighted enabling them to merge together.
- When done, click Save to save the changes to the template.

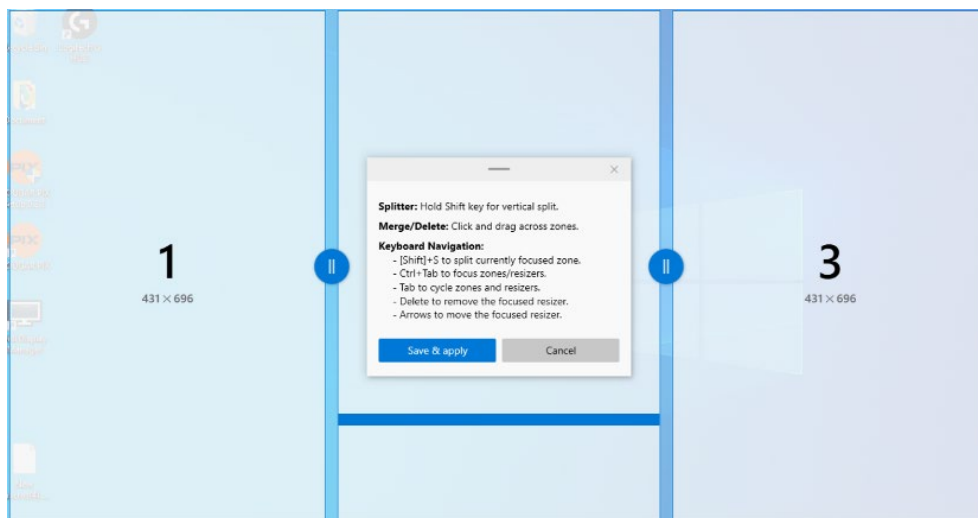


5) Create a custom layout

- The zones editor supports creating custom layouts. Select the **+ Create New Layout** button at the bottom-right.



- There are two ways to create custom area layouts: **Grid** layout and **Canvas** layout.
- The Grid model begins with a **three-column** grid and allows regions to be created by splitting and merging regions, and resizing the spacing between regions as needed. This is a relative layout and will be resized with different screen sizes.



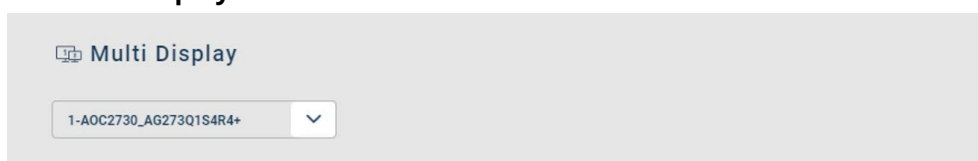
- You can edit the layout using mouse or using keyboard.
- When done, click **Save & apply**.

6) New version upgrade

- When there is a new version that can be updated, you can click **Upgrade Now** to download the latest version.

4.5 Settings

1) Multi Display



- The default display is the target device currently set
- Click the drop-down box to display all currently connected displays

- Switch to another display, all settings will be updated accordingly

2) Input



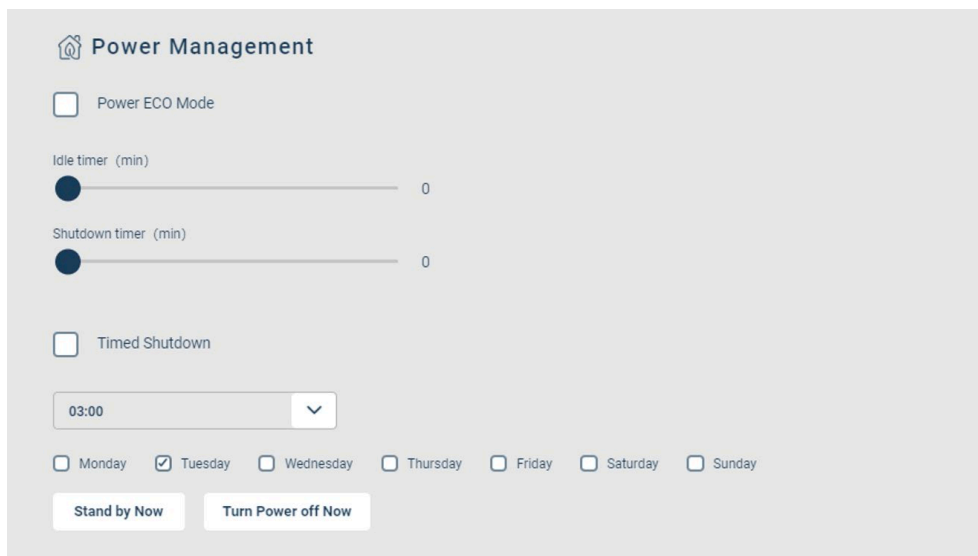
- Display the input supported by the monitor
- Selecting another input will switch to the newly selected input

3) Volume



- Adjust Volume Slider 0 (off) – 100 (maximum).
- Mute
 - Check: Turns off sound.
 - Uncheck: Turns on sound, and enables volume slider. The volume is restored to the state before muting.

4) Power Management



a. Power saving mode

- Enable - Enable power saving mode.
- Disable - Disable power saving mode.
- Idle Timer
 - Control how long the screen is idle before it goes into sleep mode.
- Power Timer
 - The power timer controls when the display turns off. You can turn the display back on using the power button on the edge of the display hardware.

b. Schedule daily power off

- Enable - enable timed shutdown.
- Disable - disable timer shutdown.

- Choose when to power off the monitor.
 - Set the shutdown time.
 - Set the date of timed shutdown, you can choose more than one.

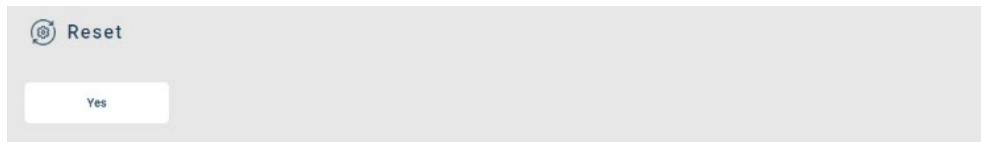
C. Stand by Now

- Click the button, **the current** setting display will be on standby immediately.

D. Turn Power Off Now

- Click the button, the current setting monitor will shut down immediately.

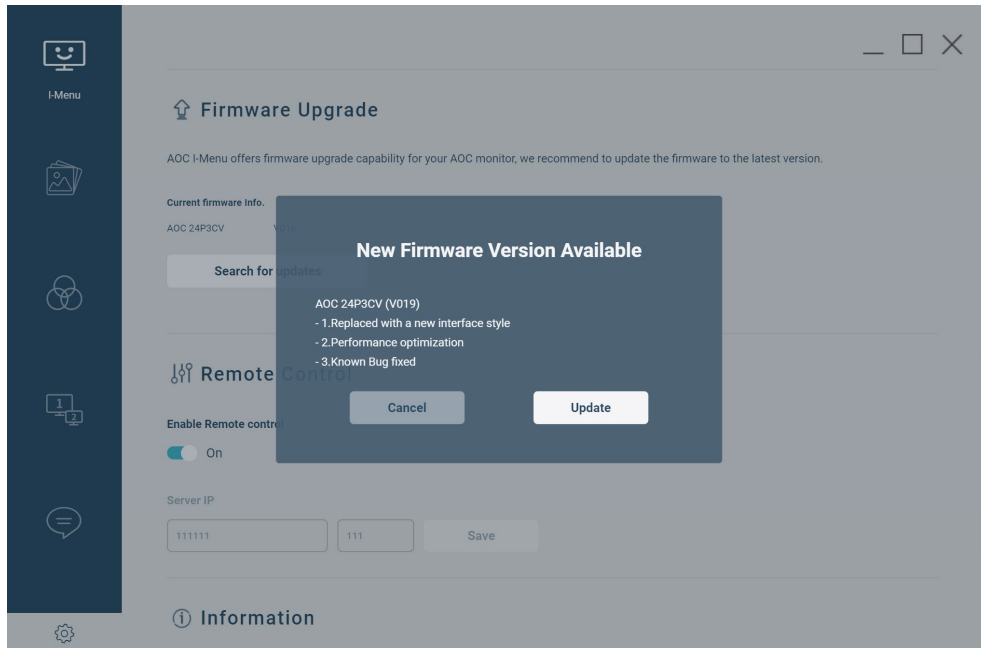
5) Reset



- I menu will be reset and restored to the default state.

6) Firmware Upgrade

- To update the firmware, please connect the USB upstream cable to NB.
- Click the **Search for updates** to perform upgrade detection, you need to keep the network connection.



- During the upgrade process, please keep the USB upstream cable connected and do not power off your PC.
- Upgrade error
 - If the upgrade fails due to abnormal communication during programming. You can click **Try again** according to the prompts on the page, please note that if you click **Cancel**, The device will then need to manually install the firmware.
 - If the device is shut down during the upgrade, you need to manually reinstall the firmware.

5) Remote Control

Remote Control

Enable Remote control

☐ Off

Server IP

- This function is mainly linked with AOC MultiSync which is a management platform for AOC monitors by remotely setting I-Menu.

| Device SN | PC MAC | District | Zone | Monitor Name | Version | Backlight hours | Status | Operation |
|---------------|-------------------|----------|------|--------------|---------|-----------------|---------|--|
| device-sn-001 | 11:22:33:44:55:71 | | | PHL578B1C | V1.2.2 | 200 | Offline | <input type="button" value="Edit"/> <input type="button" value="Setting"/> |
| device-sn-001 | 11:22:33:44:55:72 | | | PHL578B1C | V1.2.2 | 200 | Offline | <input type="button" value="Edit"/> <input type="button" value="Setting"/> |
| device-sn-001 | 11:22:33:44:55:73 | | | PHL578B1C | V1.2.2 | 200 | Offline | <input type="button" value="Edit"/> <input type="button" value="Setting"/> |
| device-sn-001 | 11:22:33:44:55:67 | | | PHL578B1C | V1.2.2 | 200 | Offline | <input type="button" value="Edit"/> <input type="button" value="Setting"/> |
| device-sn-001 | 11:22:33:44:55:68 | | | PHL578B1C | V1.2.2 | 200 | Offline | <input type="button" value="Edit"/> <input type="button" value="Setting"/> |
| device-sn-001 | 11:22:33:44:55:66 | | | PHL578B1C | V1.2.2 | 200 | Offline | <input type="button" value="Edit"/> <input type="button" value="Setting"/> |

Total 16 20/page < 1 > Go to 1

- If you allow AOC Multi Sync to remote control the device, you need to entered Server IP manually and check remote control on to enable. And AOC Multi Sync can connect to the device to obtain the monitor information.

■ Server IP Input

- ◆ The first input box is the server IP address (the PC where the server Smart Management is located) , and the second is the port input box.
- ◆ Click **Save** to save the entered server IP.
- If you do not allow AOC Multi Sync to remotely control the device, you don't need to enter IP address and tick remote control on.

Remote Control

Enable Remote Control

☒ On

Server IP

7) Information

- Information items include:
 - Display ID
 - Manufacturer
 - Description
 - Plug and Play ID
 - Serial Number

- Manufacturer Date
- Edid Revision
- Display Type and Signal
- DDC/CI Support
- Timing Recommendation
- Screen Size
- Display Gamma
- I-Menu version

5 Home (2K23)

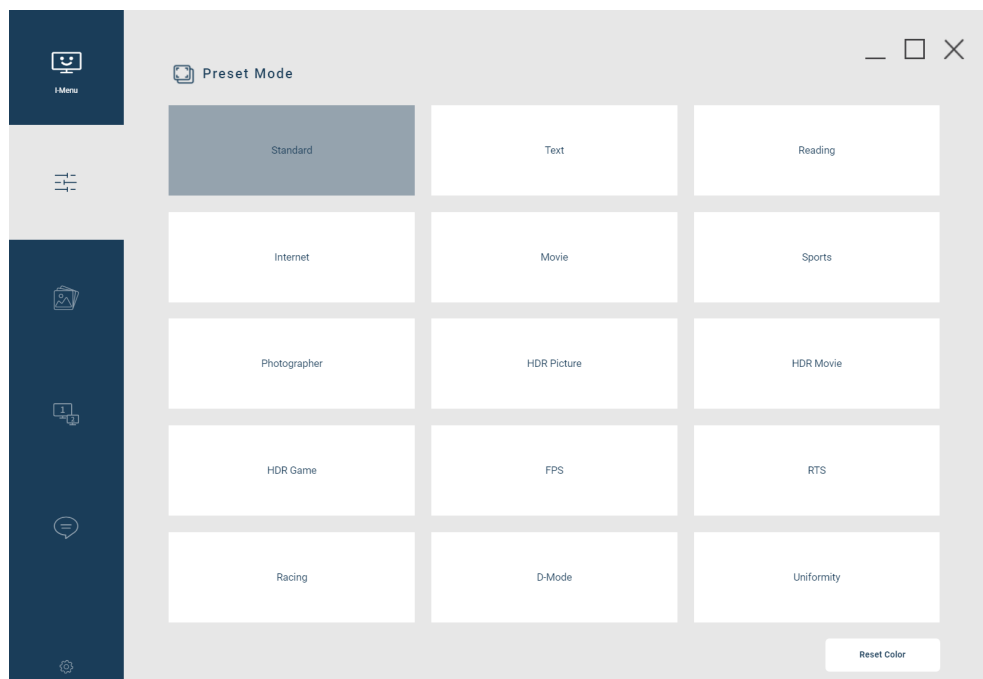
- Open I-Menu application and enter the home page.
- Navigation: **Preset/Picture/Language/Screen+/Settings**

5.1 Preset

Adjustments for display to accommodate specific types of content or scenes. These presets can alter multiple parameters such as brightness, contrast, color temperature, and sharpness to optimize viewing experiences for different situations, such as gaming, reading, watching movies, or photo editing.

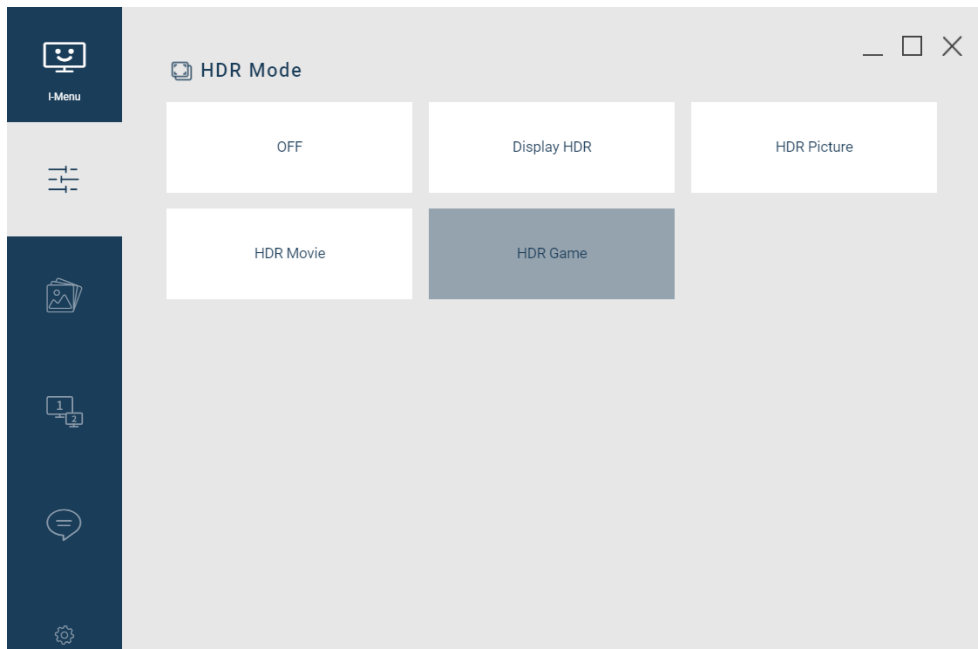
1) SDR mode

- In SDR mode, the Preset mode list includes Standard, Photographer, Text, FPS, Reading, RTS, Internet, Racing, Movie, D-Mode, Sports, HDR Picture, HDR Movie, HDR Game, Uniformity.
 - Clicking the "Reset" button after selecting Preset mode in SDR mode will restore the Preset mode to its initial default.



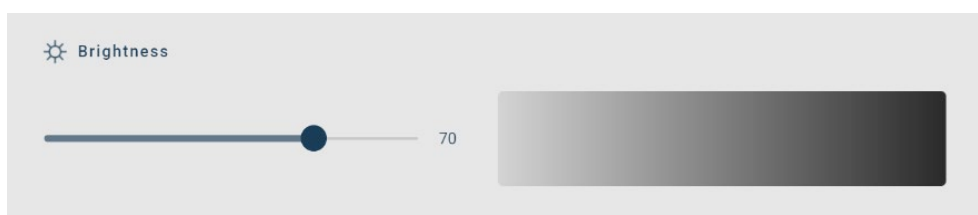
2) HDR mode

- In the system settings, when HDR Mode is enabled, the Preset Mode will switch to the HDR list: Off/Display HDR/HDR Picture/HDR Movie/HDR Game.
- Under HDR mode, the Brightness, Contrast, Sharpness, and Clear Vision items under the HDR Picture, HDR Movie, and HDR Game modes are customizable by the end user. However, since the Clear Vision preset is set to "weak" in all three HDR modes by default, the Sharpness preset cannot be adjusted until the Clear Vision is set to Off.



5.2 Picture

1) Brightness



- Slider range 0-100.

2) Contrast



- Slider range 0-100.

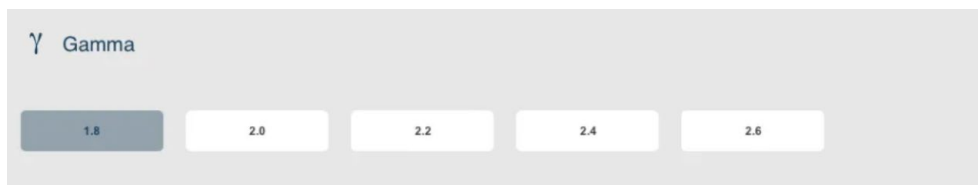
3) Sharpness

- Used to adjust the display effect of sharpness and details on the screen edges. By increasing or decreasing the sharpness setting, the image can appear sharper or softer.
- Slider range 0-100.



4) Gamma

- Gamma level adjusts the pixel brightness for each brightness level. Lower gamma increases brightness, making shadows appear brighter and may result in a flatter, faded image, but with brighter highlights. Higher gamma values decrease brightness, making it harder to see details in the shadows.



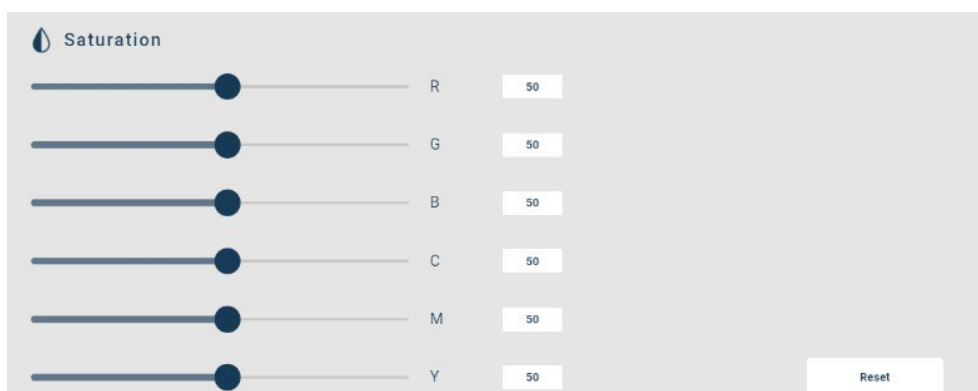
5) Color Temperature

- By adjusting the monitor's color temperature settings, users can choose the appropriate color tone according to their preferences and usage environment, to achieve a more comfortable and suitable visual experience.



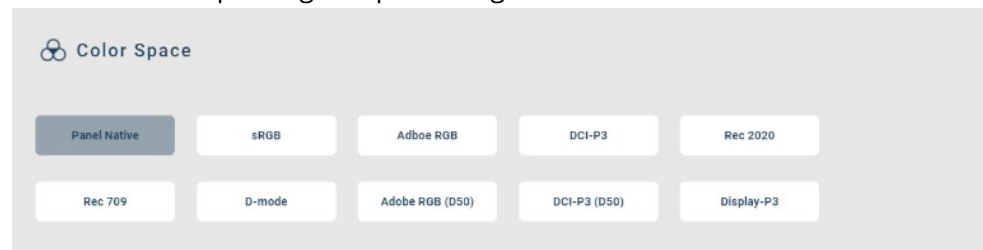
6) Saturation

- You can adjust the saturation to change the intensity of various colors in the image, thereby affecting the overall color effect. This is very useful for adjusting the color balance of photos, enhancing the visual effects of certain colors, or adding artistic flair to the image.



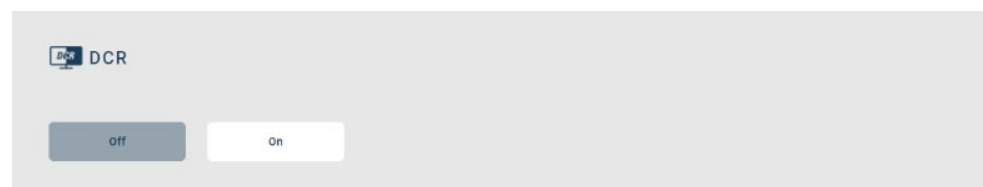
7) Color Space

- You can select the appropriate color space according to your needs to better process images or adjust display effects. Different color spaces are suitable for different application scenarios. For example, the RGB color space is suitable for digital image processing, display devices, and network transmission, while the CMYK color space is suitable for printing and publishing.



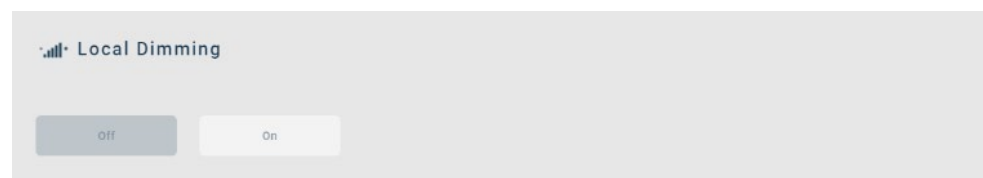
8) DCR

- Dynamic Contrast Ratio (DCR) is a display feature that enhances contrast levels by automatically adjusting the backlight brightness of the monitor, making dark areas darker and bright areas brighter, thereby enhancing the visual effect of the image.



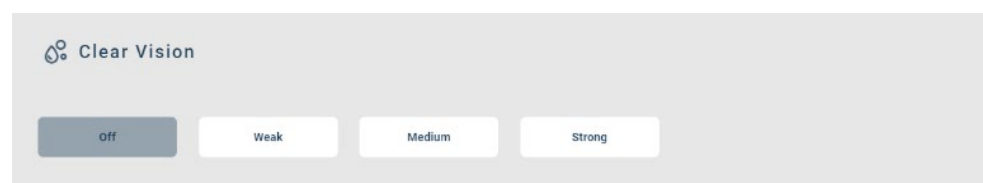
9) Local Dimming

- Improving screen contrast and black level performance.



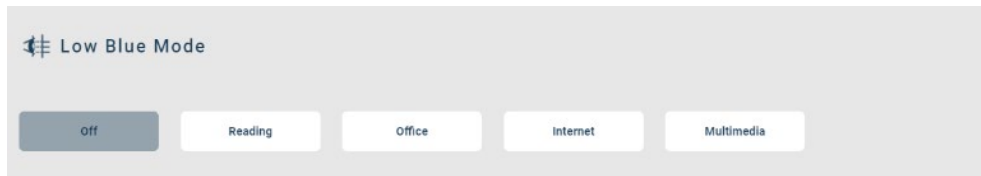
10) Clean vision

- Optimizing image quality to provide a clearer and more accurate visual experience.



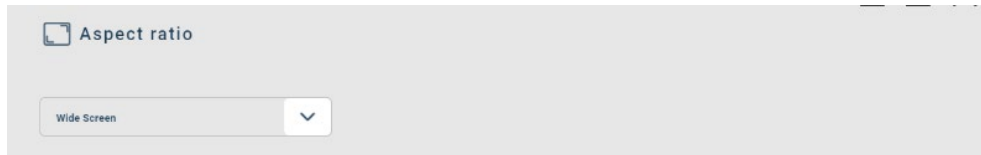
11) Lowblue Mode

- Lowblue Mode reduces the level of blue light emitted by the display to minimize eye strain and fatigue. When enabled, the display typically adjusts the color temperature or reduces the intensity of blue light to provide a softer and more comfortable viewing experience.



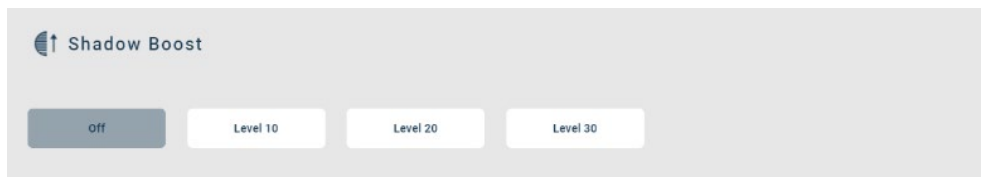
12) Image Ratio

- By adjusting the image ratio, you can choose the display mode that best suits your content and application, to achieve the optimal visual experience.



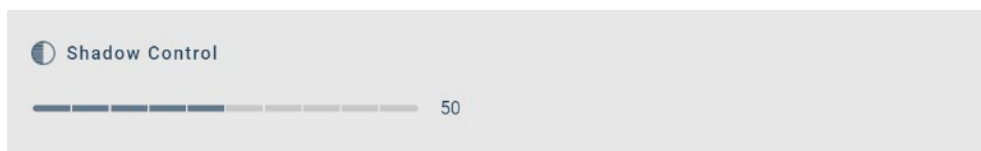
13) Shadow Boost-

- Enabling Shadow Boost increases the brightness of dark areas on the monitor and may adjust the contrast to ensure that dark details are more easily visible. This is particularly useful for gaming, watching movies, or editing photos where better representation of dark details is needed.



14) Shadow Control

- You can adjust the brightness level of Shadow Control to make them brighter and clearer in games or video



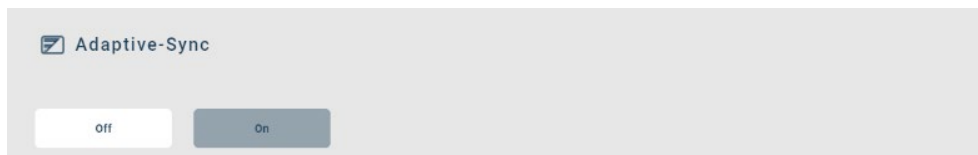
15) Game Color

- Adjusting the color parameters of the image to enhance color saturation while simultaneously boosting contrast to make colors clearer and brighter.



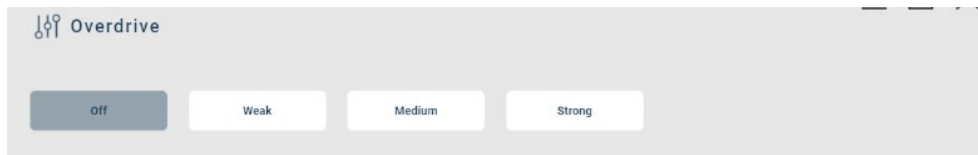
16) Adaptive-Sync

- Allows the monitor's refresh rate to dynamically adjust, syncing with the GPU's frame rate to eliminate screen tearing and stuttering, providing a smoother gaming experience.



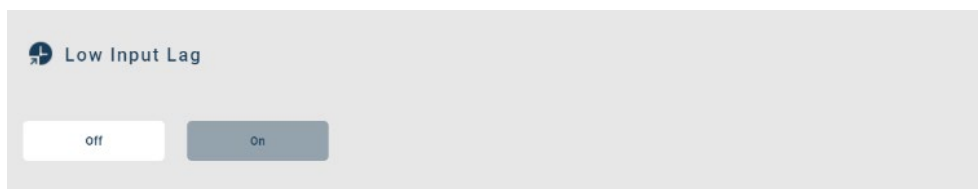
17) Overdrive

- You can select different levels of Overdrive or disable this feature in the monitor menu to balance response time and image quality.



18) Low Input Lag

- The "Low Input Lag" refers to the ability of a monitor to quickly convert received input signals into corresponding displayed images. This function aims to reduce input latency, which is the time difference between when a player inputs a command and when the monitor actually displays the corresponding image.



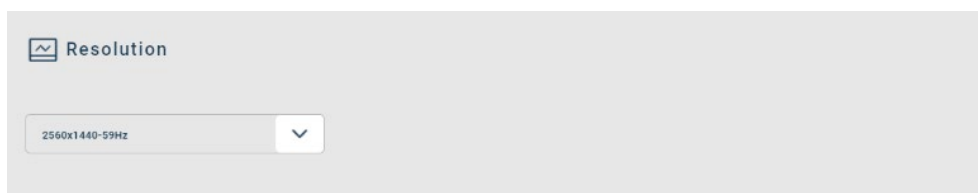
19) Screen rotation

- You can adjust the display orientation of the monitor to the most suitable display mode for its content and usage scenario.

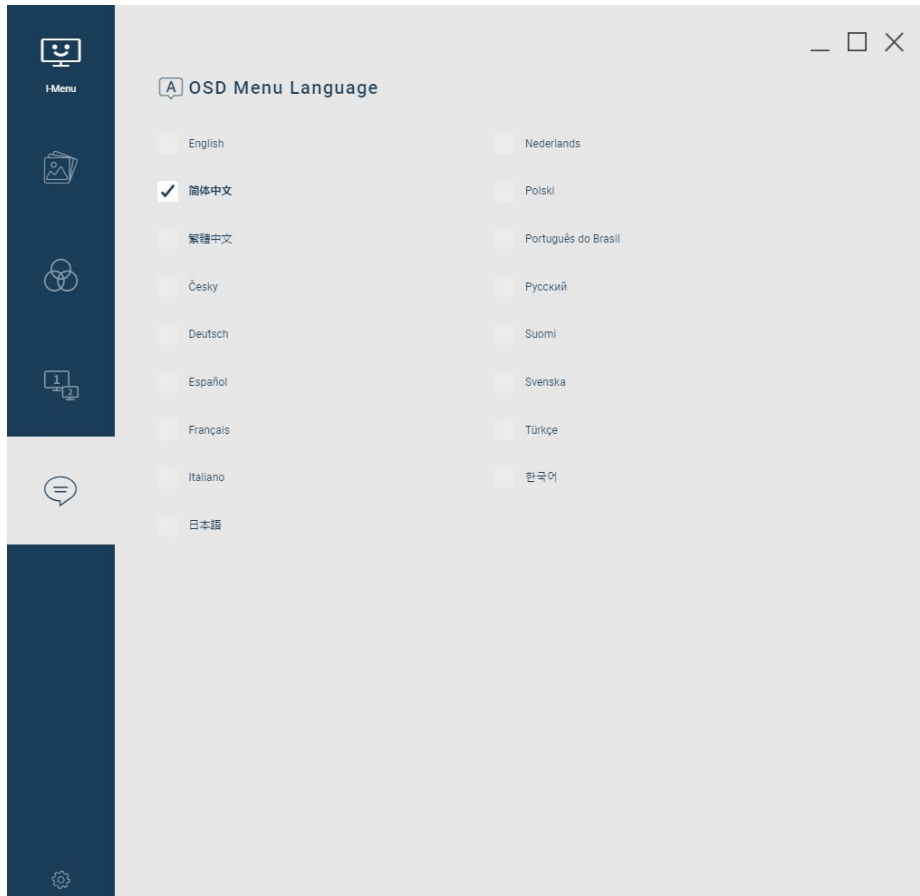


20) Resolution

- You can click to select the resolution of the monitor.



5.3 Language



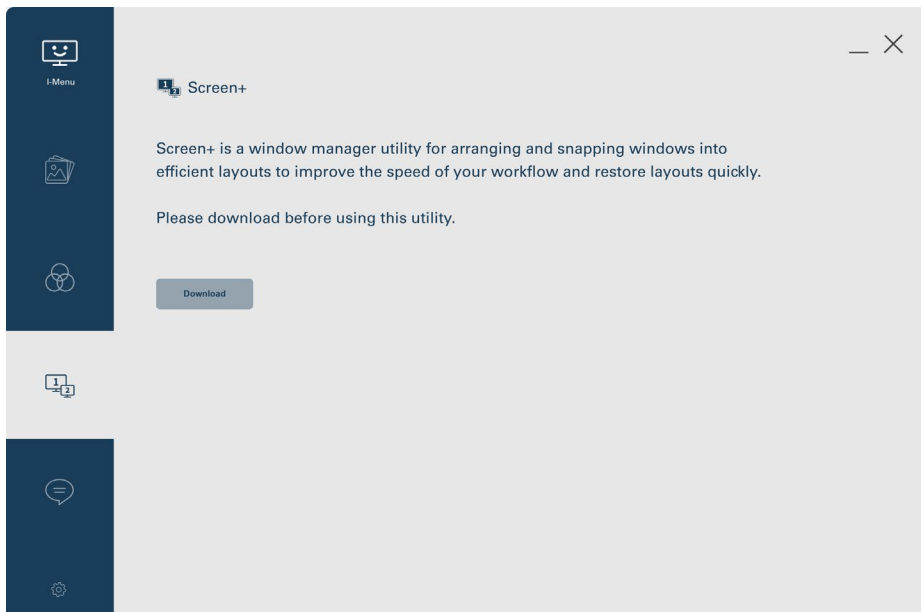
- Click the appropriate language button to switch OSD Menu languages immediately.

5.4 Screen+

Screen+ enables you to easily arrange the open windows in one of the predefined layouts by dragging them in the zones.

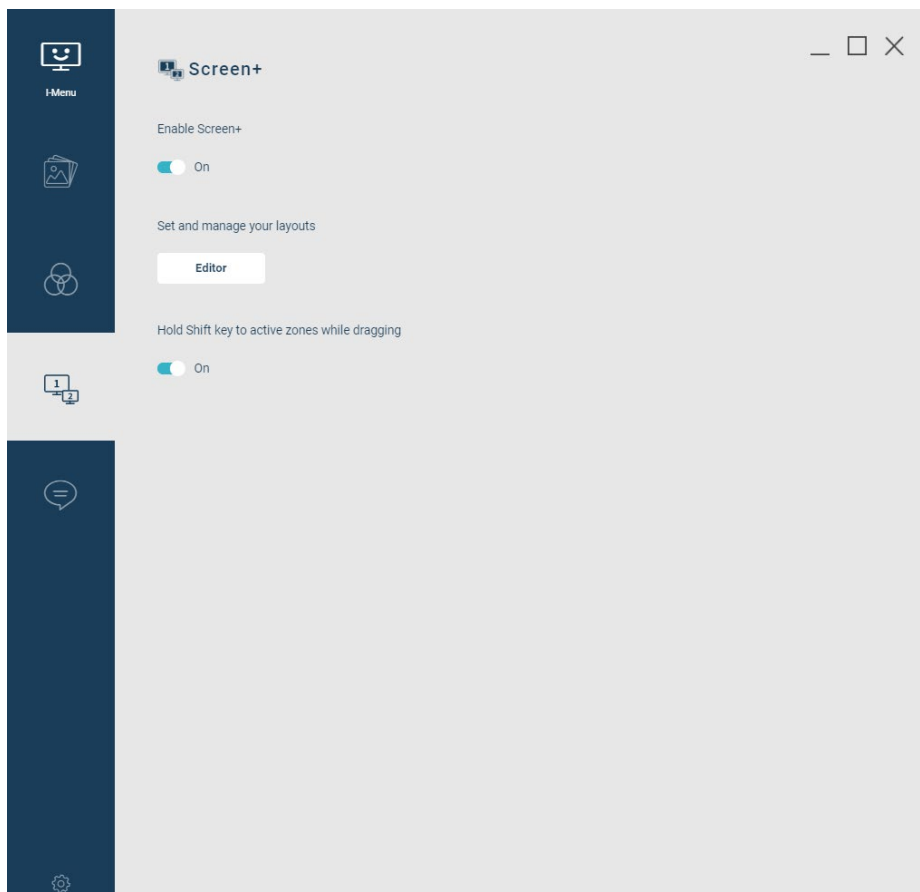
3) Download Screen+

- You only need to download it for the first time, and you can use it directly afterwards.



3) Enable Screen+

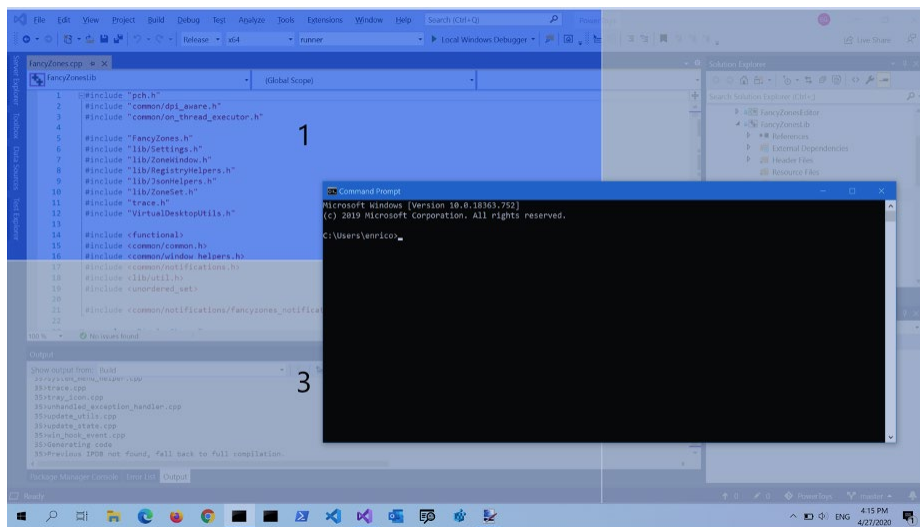
- Enable desktop layout settings.



3) Snapping to a single zone with the mouse

- Drag the window. By default, you will also need to press and hold the Shift key (This setting can be disabled). You'll see the zones appear. As you move your mouse, hovering over a zone will highlight that zone.

- If "Hold Shift key to activate zones while dragging" is disabled, zones will appear right after you start dragging the window.



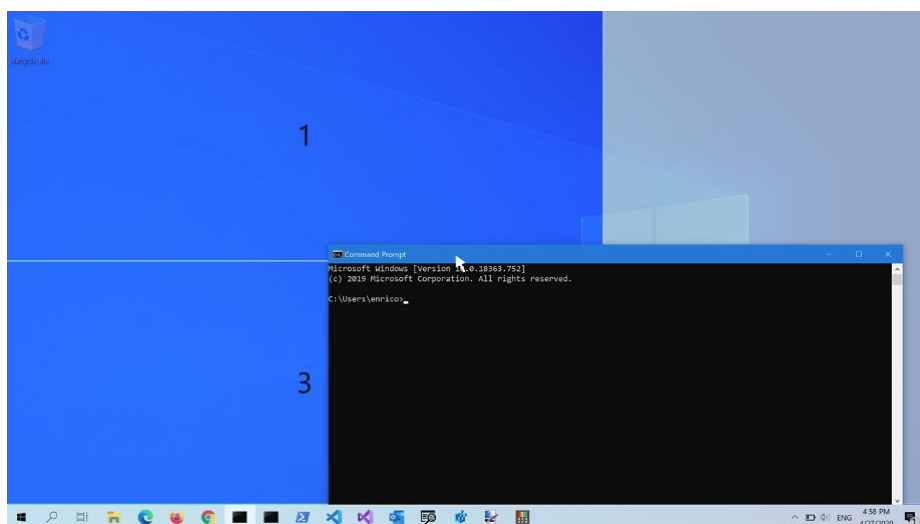
4) Snapping to multiple zones

Snapping to two zones by edge hovering

- If two zones are adjacent, a window can be snapped to the sum of their area (rounded to the minimum rectangle that contains both). When the mouse cursor is near the common edge of two zones, both zones are activated simultaneously, allowing you to drop the window into both zones.

Snapping to multiple zones with the mouse + keyboard

- You can drag the window until one zone is activated, then press and hold the **Control** key while dragging the window to select multiple zones.

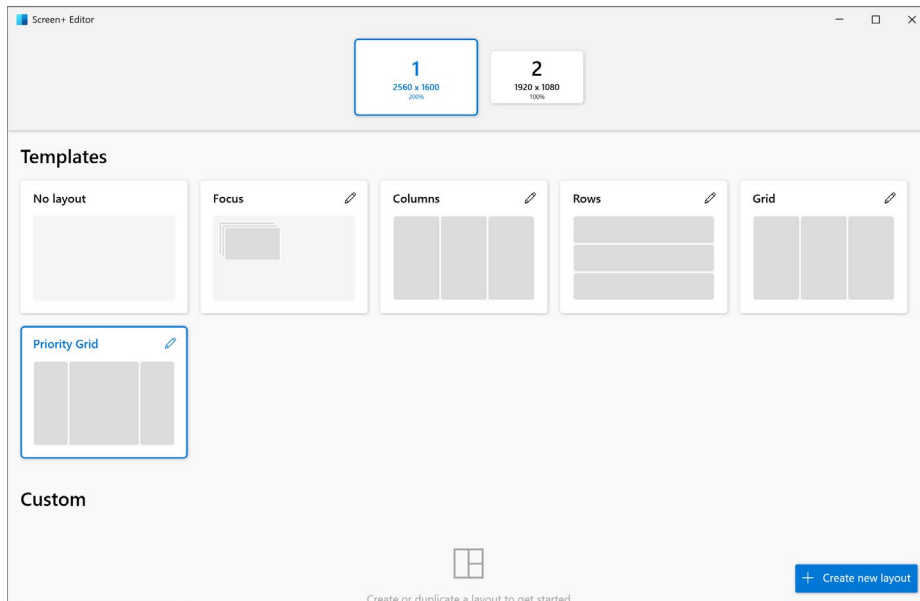


6) Set and manage your layouts

- Click **Edit** to launch zones editor.

Choose a layout

- When first launched, the zones editor presents a list of layouts that can be adjusted by how many windows are on the monitor. Selecting a layout shows a preview of that layout on the monitor. The selected layout is applied automatically. Double-clicking a layout will apply it and automatically close the editor.

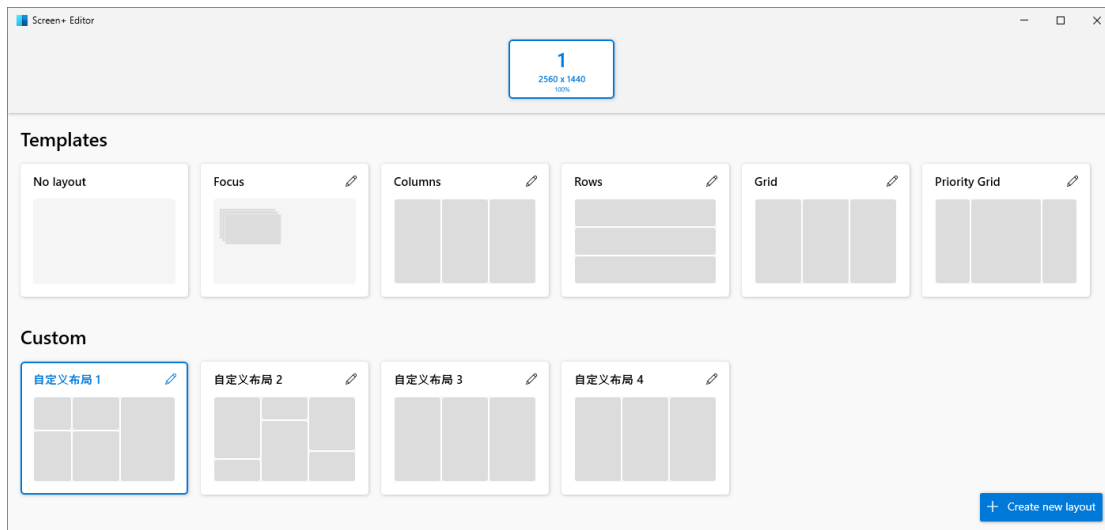


Edit zone layout

- Click the pencil icon for a layout you want to modify.

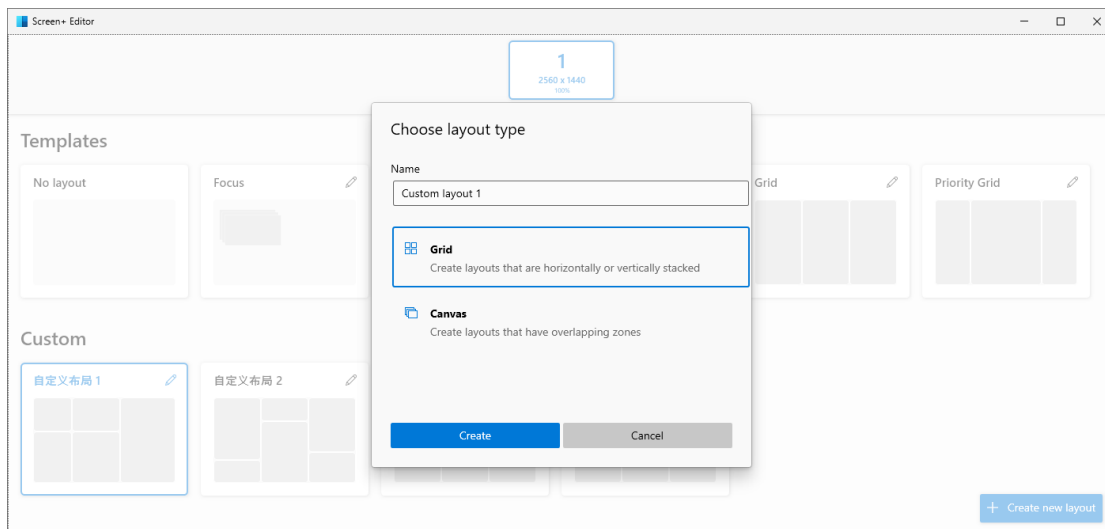


- First, you can increase or decrease the **number of zones**. You're adding or subtracting the number of rows for a row layout. You're adding or subtracting the number of columns for a column or grid layout. Click the field for Number of zones and either click the up or down arrow or type a specific number.
- To increase or decrease the space, or padding, around each zone, click in the field for **Space around zones** and click the up or down arrow or type a specific number. Turn off the switch completely to eliminate the spacing.
- The **Highlight distance** adjacent zones enable you to set a custom value for the amount of space between zones until they snap together, or before both are highlighted enabling them to merge together.
- When done, click Save to save the changes to the template.

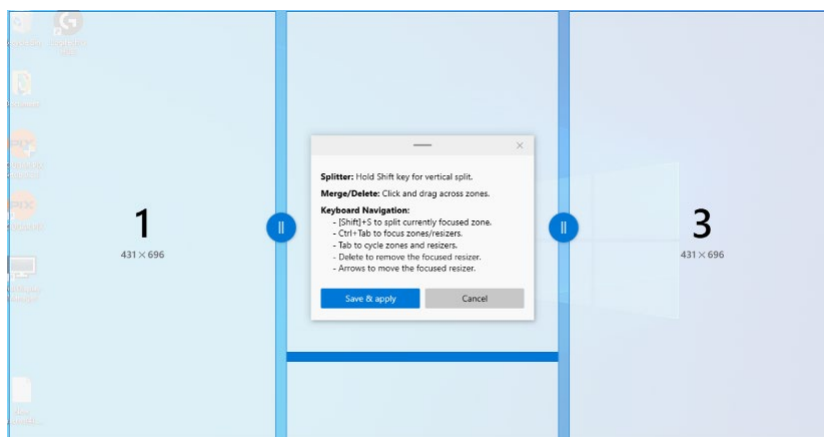


5) Create a custom layout

- The zones editor supports creating custom layouts. Select the **+ Create New Layout** button at the bottom-right.



- There are two ways to create custom area layouts: **Grid** layout and **Canvas** layout.
- The Grid model begins **with a three-column grid** and allows regions to be created by splitting and merging regions, and resizing the spacing between regions as needed. This is a relative layout and will be resized with different screen sizes.



- You can edit the layout using mouse or using keyboard.

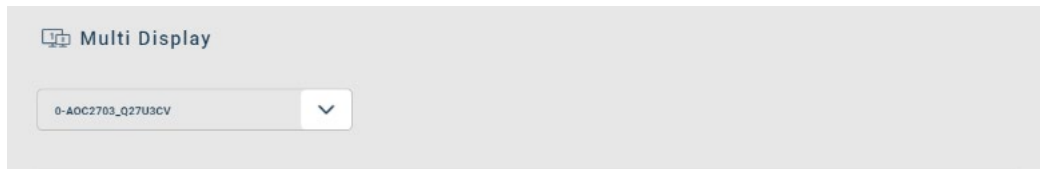
- When done, click **Save & apply**.

7) New version upgrade

- When there is a new version that can be updated, you can click **Upgrade Now** to download the latest version.

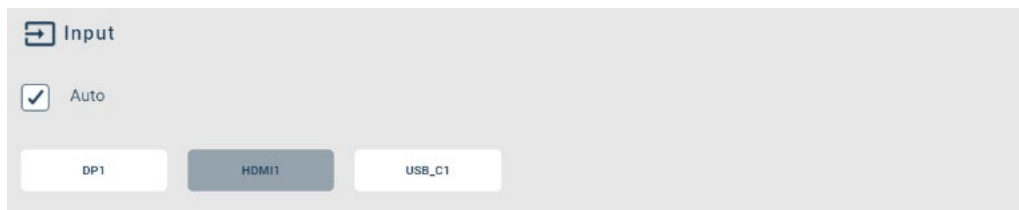
5.5 Settings

1) Multi Display



- The default display is the target device currently set
- Click the drop-down box to display all currently connected displays
- Switch to another display, all settings will be updated accordingly

2) Input



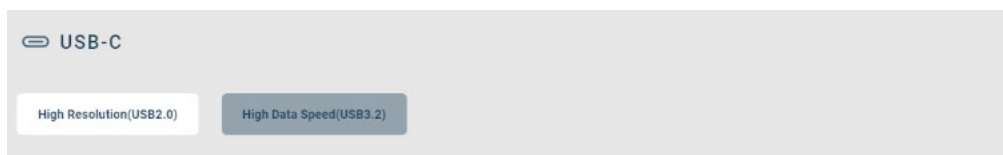
- Display the input supported by the monitor
- Selecting another input will switch to the newly selected input

3) Volume

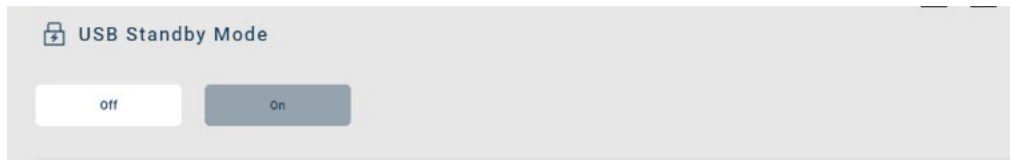


- Adjust Volume Slider 0 (off) – 100 (maximum).
- Mute
 - Check: Turns off sound.
 - Uncheck: Turns on sound, and enables volume slider. The volume is restored to the state before muting.

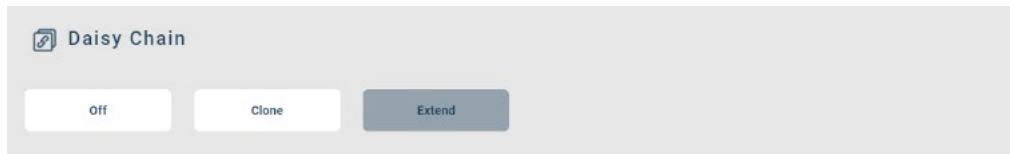
4) USB-C



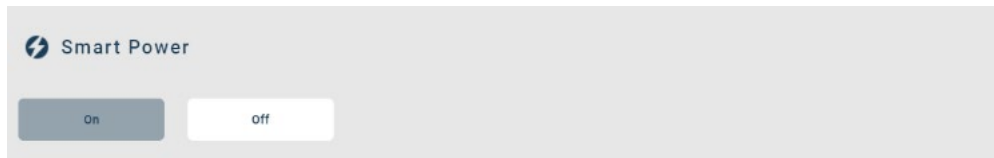
5) USB Standby Mode



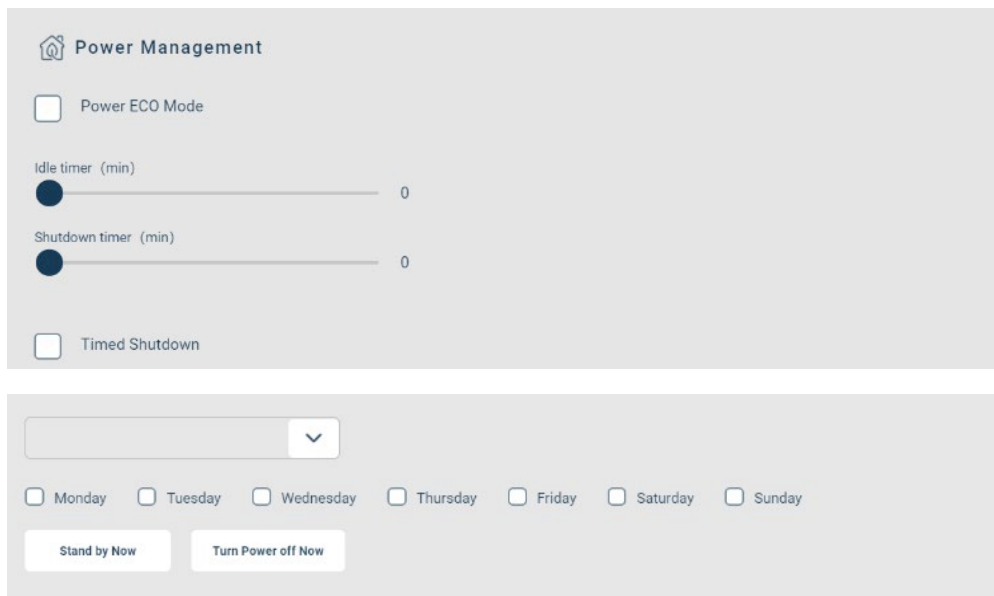
6) Dasiy Chain



7) Smart Power



8) Power Management



a. Power saving mode

- Enable - Enable power saving mode.
- Disable - Disable power saving mode.
- Idle Timer
 - Control how long the screen is idle before it goes into sleep mode.
- Power Timer
 - The power timer controls when the display turns off. You can turn the display back on using the power button on the edge of the display hardware.

b. Schedule daily power off

- Enable - enable timed shutdown.
- Disable - disable timer shutdown.
- Choose when to power off the monitor.
 - Set the shutdown time.
 - Set the date of timed shutdown, you can choose more than one.

C. Stand by Now

- Click the button, the current setting display will be on standby immediately.

D. Turn Power Off Now

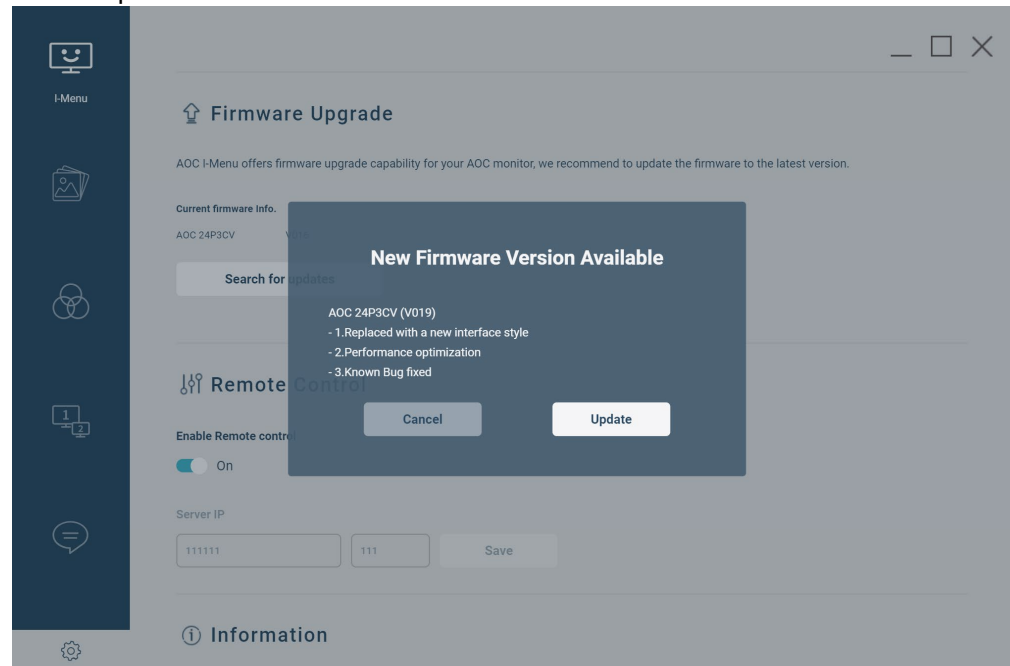
- Click the button, the current setting monitor will shut down immediately.

4) Reset

- I-Menu will be reset and restored to the default state.

8) Firmware Upgrade

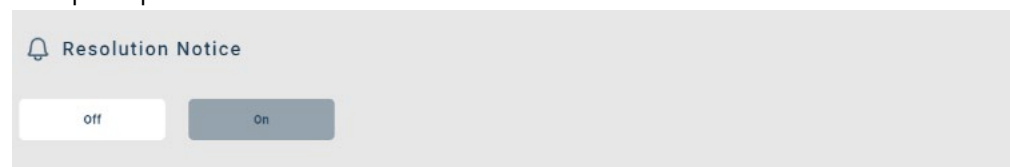
- To update the firmware, please connect the USB upstream cable to NB.
- Click the **Search for updates** to perform upgrade detection, you need to keep the network connection.



- During the upgrade process, please keep the USB upstream cable connected and do not power off your PC.
- Upgrade error
 - If the upgrade fails due to abnormal communication during programming. You can click **Try again** according to the prompts on the page, please note that if you click **Cancel**, The device will then need to manually install the firmware.
 - If the device is shut down during the upgrade, you need to manually reinstall the firmware.

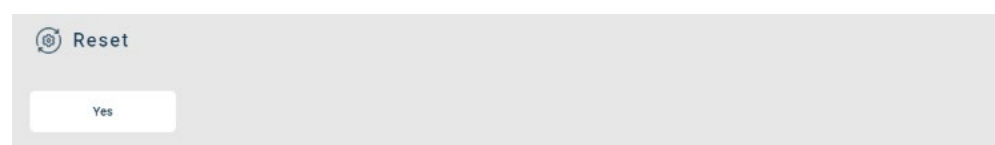
9) Resolution Notice

- When the current display resolution mismatches the recommended resolution, a prompt will be issued.



10) Reset

- I menu will be reset and restored to the default state.

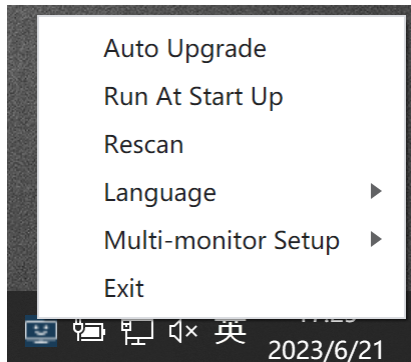


12) Information

- Information items include:
 - Display ID
 - Manufacturer
 - Description
 - Plug and Play ID
 - Serial Number
 - Manufacturer Date
 - Edid Revision
 - Display Type and Signal
 - DDC/CI Support
 - Timing Recommendation
 - Screen Size
 - Display Gamma
 - I-Menu version

6 Tray

In the tray, user can make basic Settings for the system.



1) Auto Upgrade

- Enable--when a new software version is detected, it will automatically download and upgrade.
- Disable--When a new software version is detected, a pop-up window will prompt you to follow the steps to upgrade the new version

2) Run At Startup

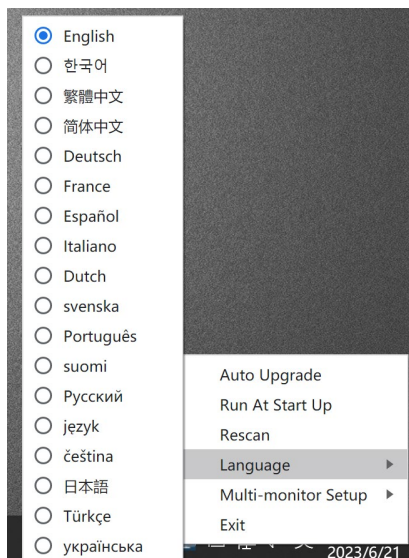
- After checking this, when booting up, the I-menu will be automatically launched and displayed in the tray every time the boot is turned on.

3) Rescan

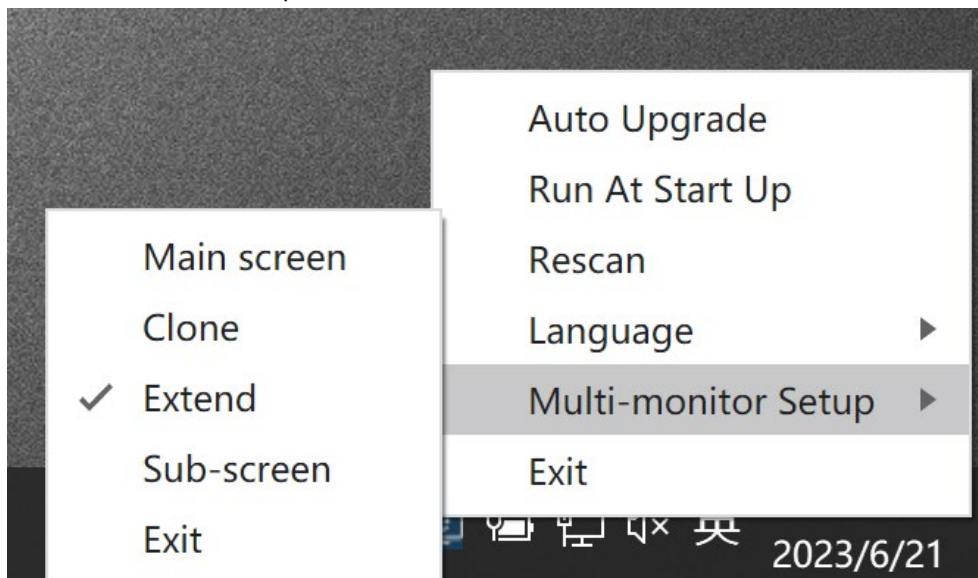
- Click to reloads the software information.

4) Language

- Click to change I-menu language.



5) Multi-monitor setup



- Display on main monitor only (default).
- Clone
 - The display contents of multiple connected display interfaces are the same. When one display is operated, the other display changes synchronously.
- Expansion
 - Multiple display interfaces are used as a single display screen that has been cut to form a complete screen, and the mouse can go from the first display to the second display.
- Display on secondary display only.

6) Exit

- Click to exit I-Menu.