

Disassembly SOP for 24P1&24P1/GR

1. Suggest Tools

Here are some tools that can be used for the LCD monitor's service and repair.

Philips-head Screwdriver

Use a Philips-head screwdriver to fasten/remove the K- or B-typed screws



P/N: N/A

Gloves

To protect LCD Panel and your hand



P/N: (L) N/A (M) N/A

C/D Disassembly Tool

Use C/D Disassembly Tool to open cosmetic cover and avoid scratch.



P/N: N/A

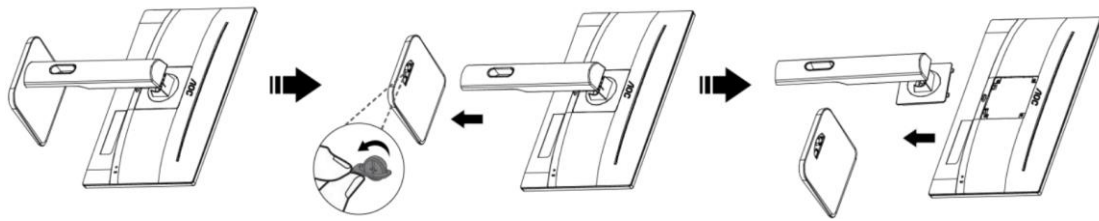
Spacer Screwdriver

Use a spacer screwdriver to fasten/remove spacer screws or hex screws.

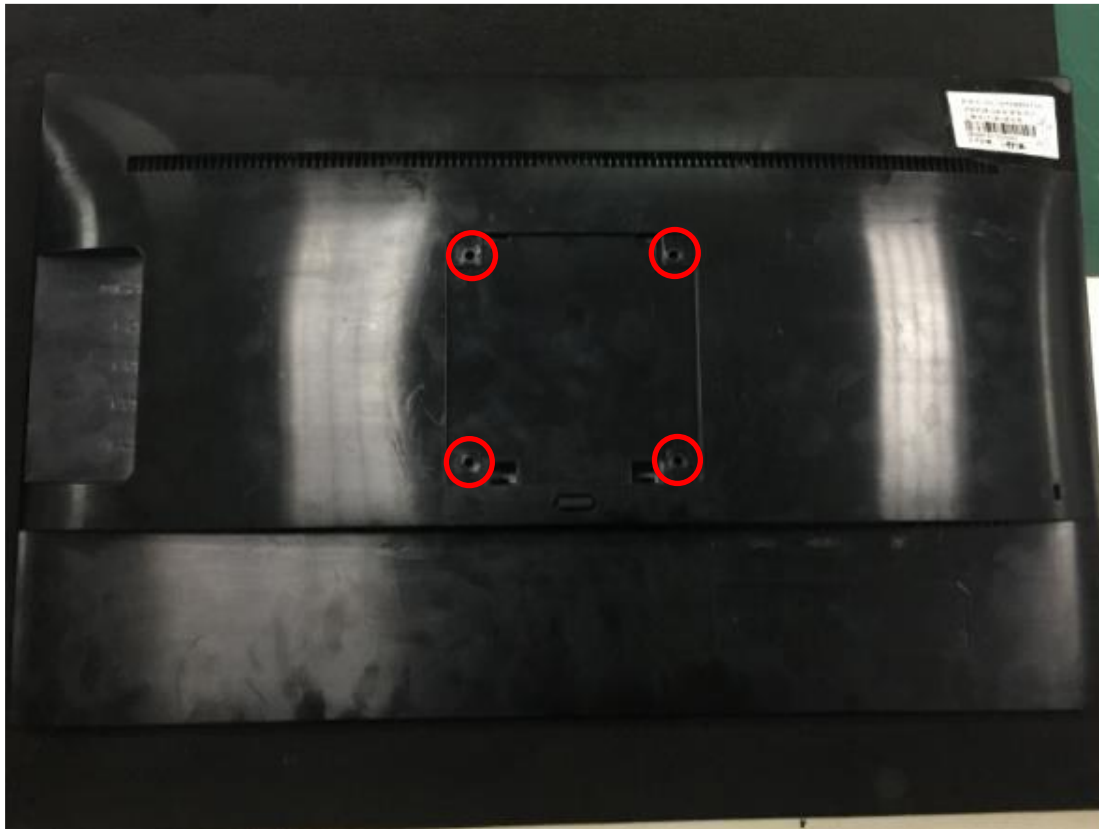


P/N: N/A

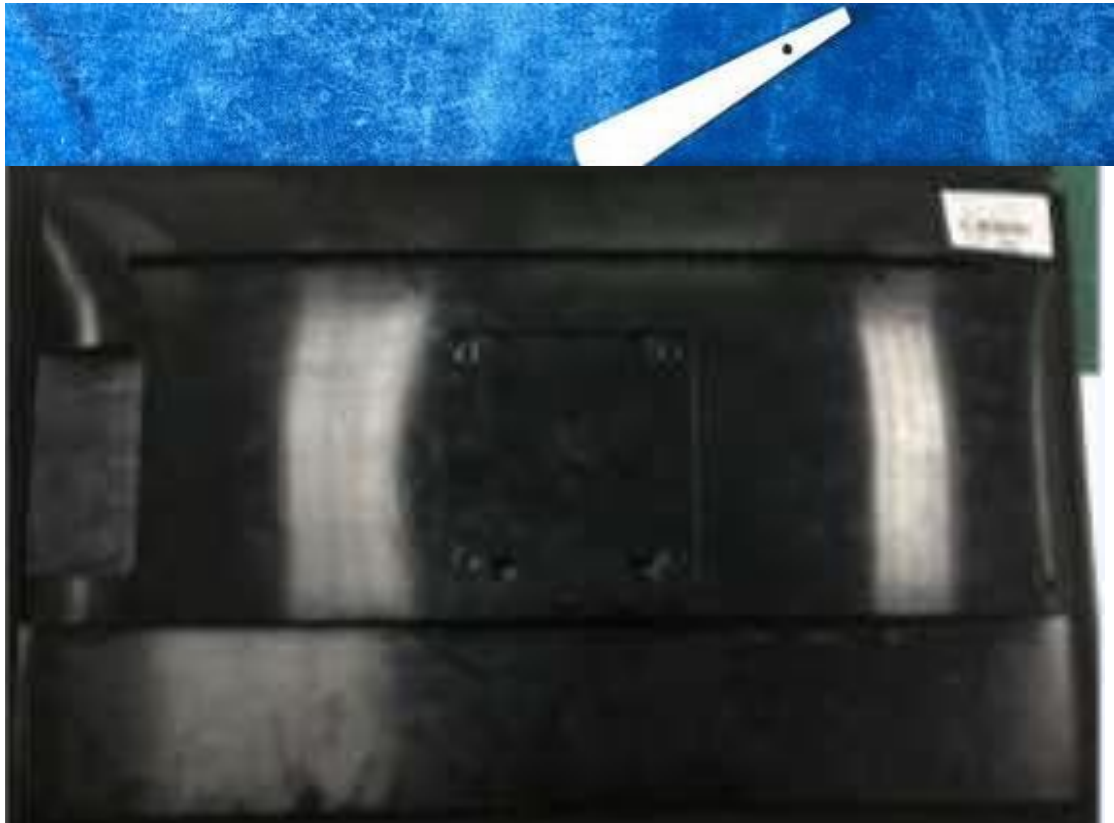
2. Remove stand and base.



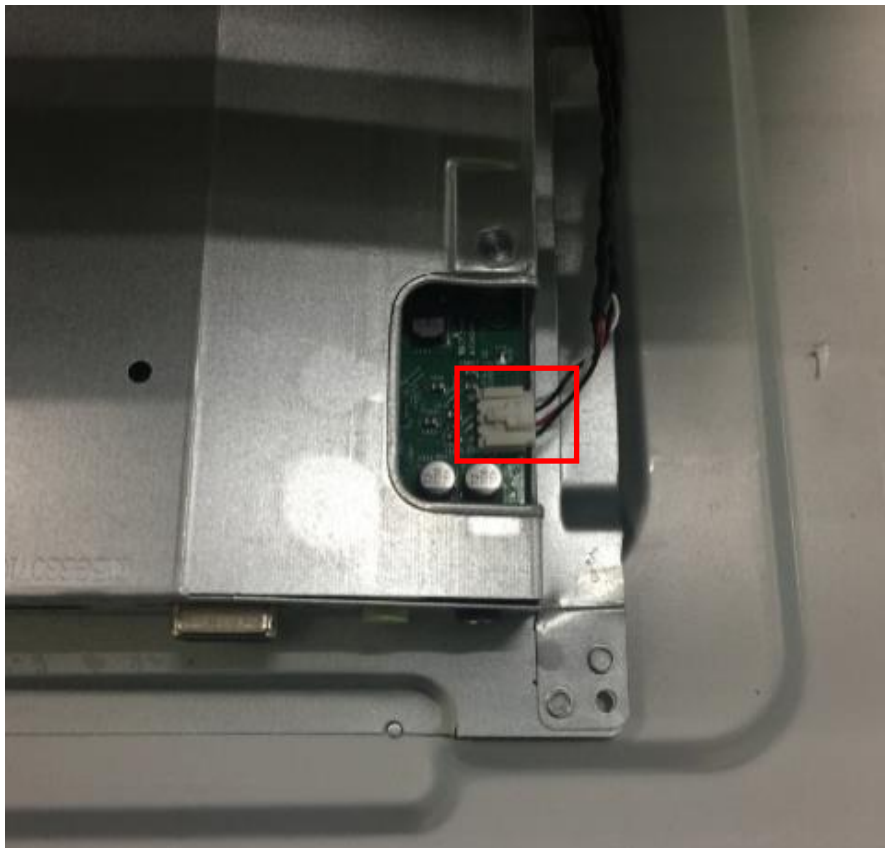
3. Remove screws.



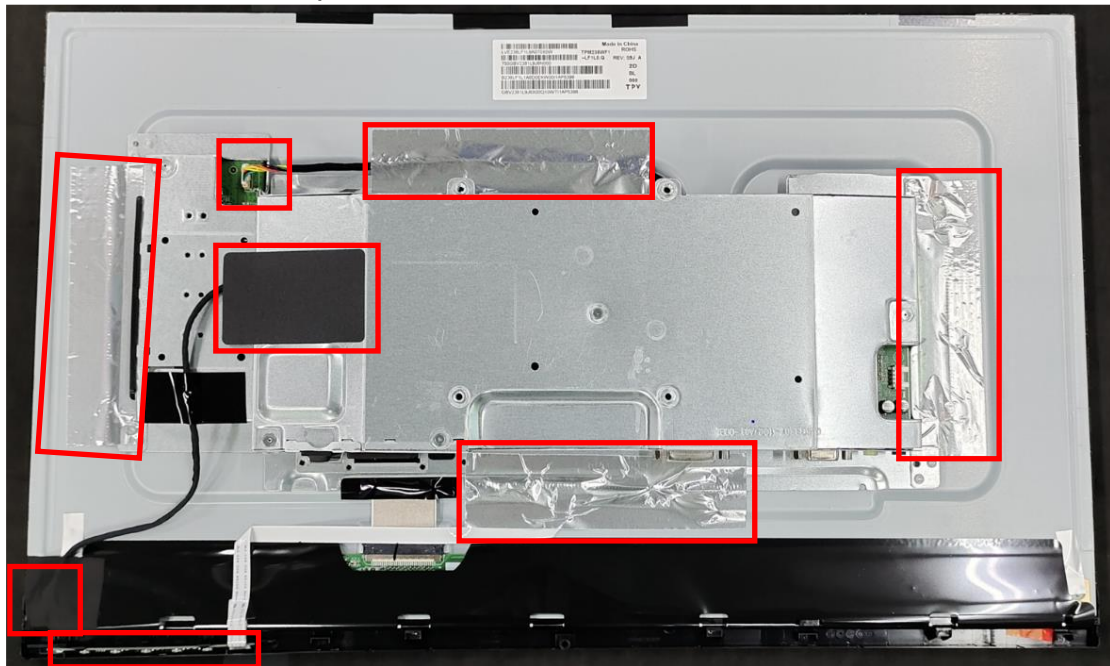
4. Use disassembly tool to open all the latches along the edge of rear cover.



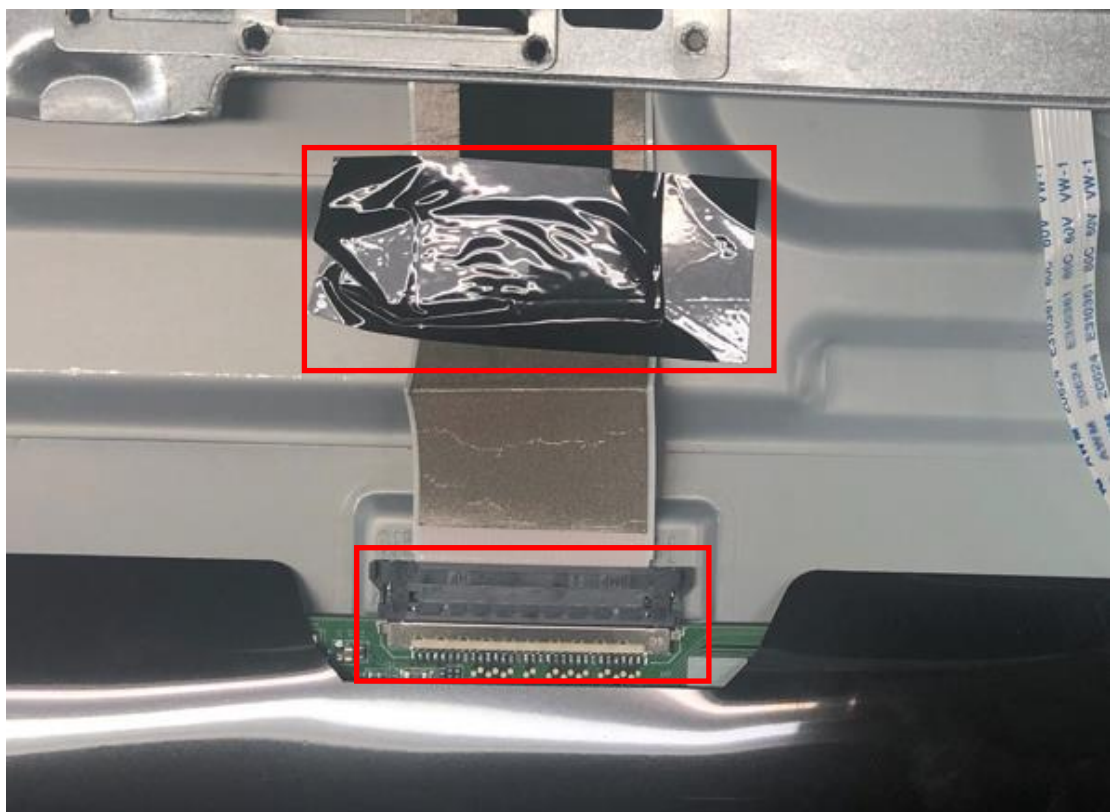
5. Take off tape and disconnect the connector.



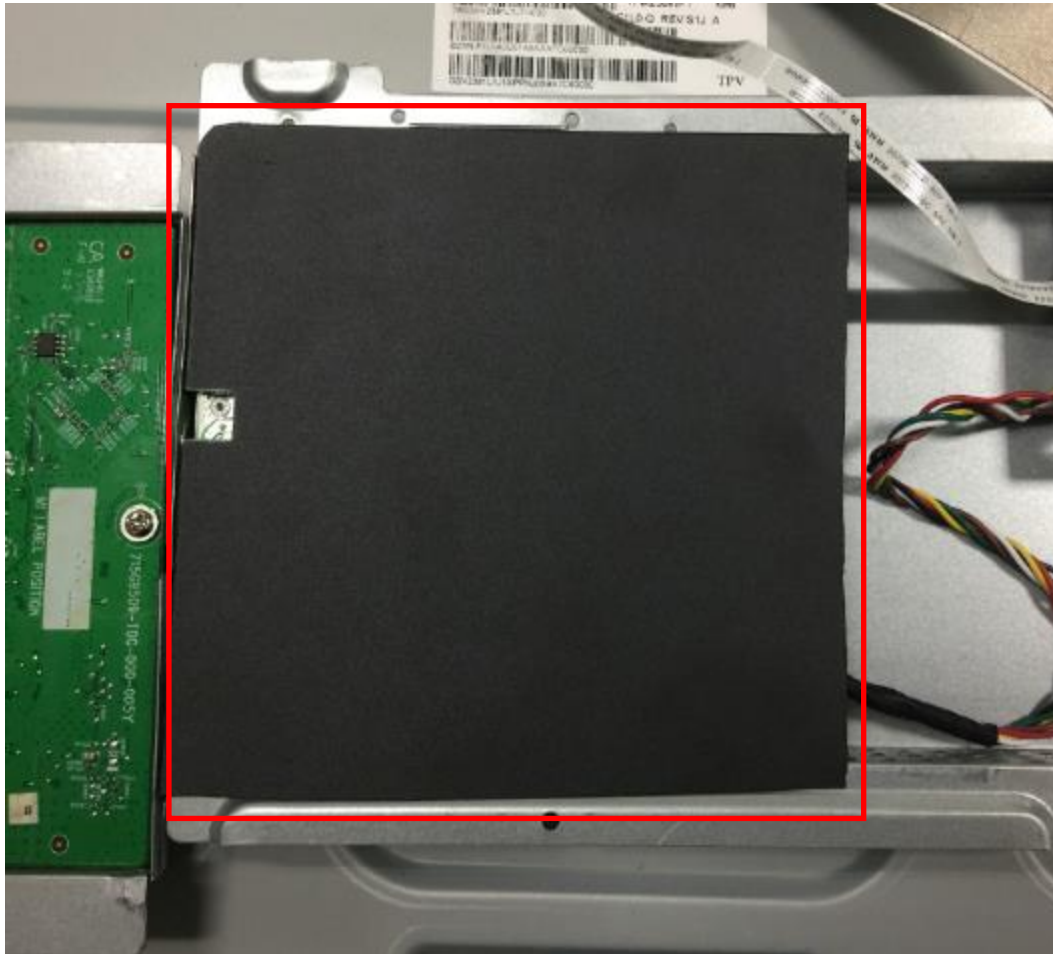
6. Take off all of the tapes and disconnect the connectors.



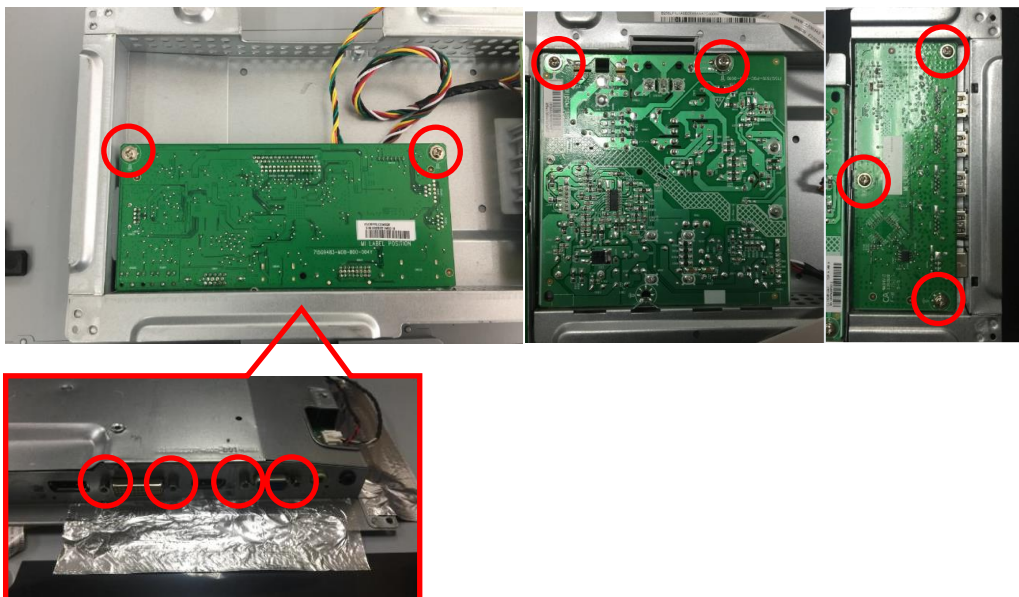
7. Take off the tape and disconnect the connector.



8. Remove Mylar.



9. Remove screws to get boards.



10. Remove screws to get panel and middle frame.

