

AOC GH300 GAMING HEADSET

USER MANUAL Ver. 1.0.0



CAUTION: To use this product properly, please read the user's guide before installing.

Contents

1. Package Contents and System Requirements	3
2. Technical Specifications	4
3. Device Layout Overview	5
4. Software Installation.....	6
5. Software Running	9
6. Software Update.....	10
7. Home Page	11
8. Headset Settings.....	16
9. Discovery	28
10. Macro	45
11. Language	49
12. Safety Guide and Maintenance	50

1. Package Contents and System Requirements

Package Contents

- GH300 wired gaming headset
- Quick start guide

Product Requirements

- Windows® 7 or above
- Available USB port

AOC G-Menu Requirements

- Windows® 7 or above
- 500MB free hard disk space
- Internet connection

Technical Support

- 2 years limited warranty

Free online technical support at www.aoc.com

2. Technical Specifications

- Driver: 50mm, PU+PEEK composite diaphragm, Neodymium Magnet
- Frequency range: 20Hz - 20KHz
- Impedance: $32 \Omega \pm 15\%$
- Sensitivity: $100 \pm 3\text{dB}$ (at 1KH 1mW)
- Connection: USB
- Audio: 7.1 Virtual Surround Sound (PC+AOC G-Menu), support up to 24bit/96kHz Hi-Res Audio(PC/Mac) by internal DAC
- Software: AOC G-Menu
- Microphone: Detachable Omnidirectional
- Control: In-line control
- LED lighting: AOC Light FX RGB lighting, customizable via AOC G-Menu

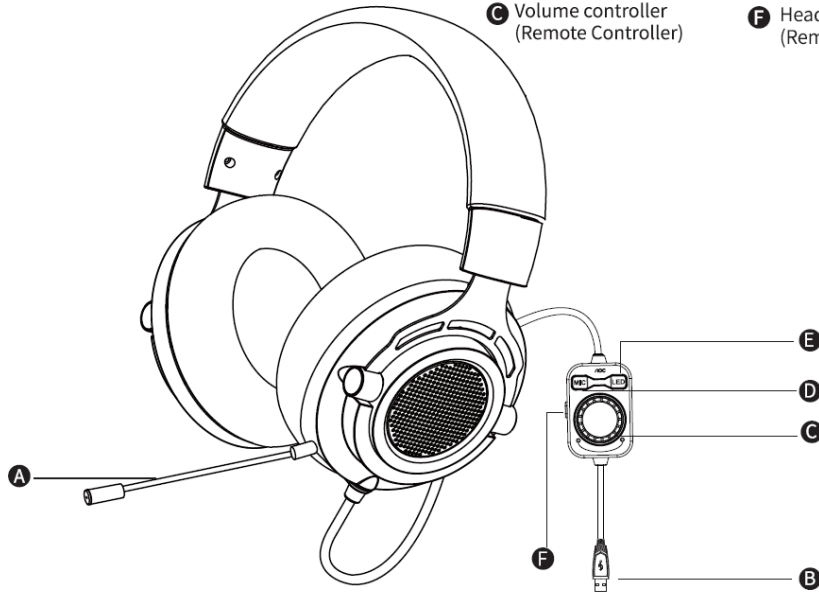
Approximate Size & Weight

- Length: 160 mm
- Width: 100 mm
- Height: 195m
- Weight: 363g (including the cable and the remote controller)

3. Device Layout Overview

Overview

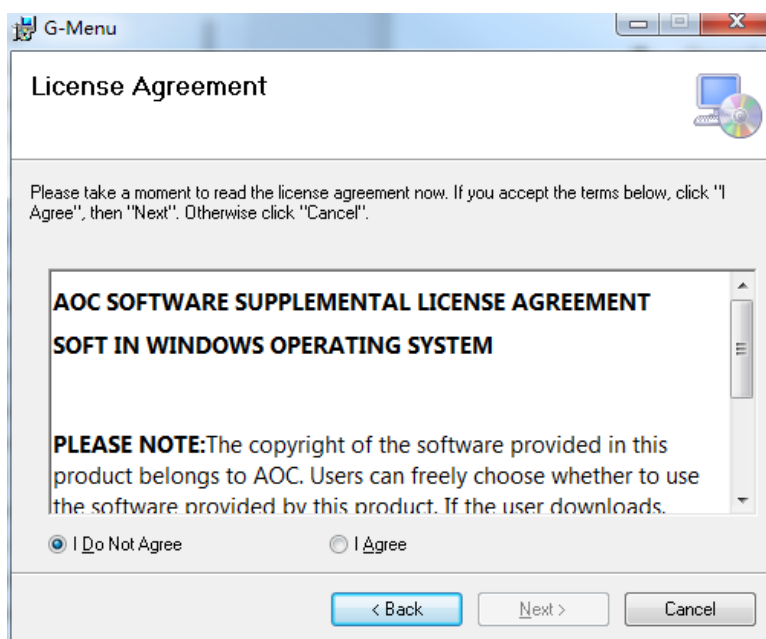
- A** Microphone
- B** USB plug
- C** Volume controller (Remote Controller)
- D** Microphone Mute Switch (Remote Controller)
- E** LED Lighting On/Off Button (Remote Controller)
- F** Headphone Mute Button (Remote Controller)



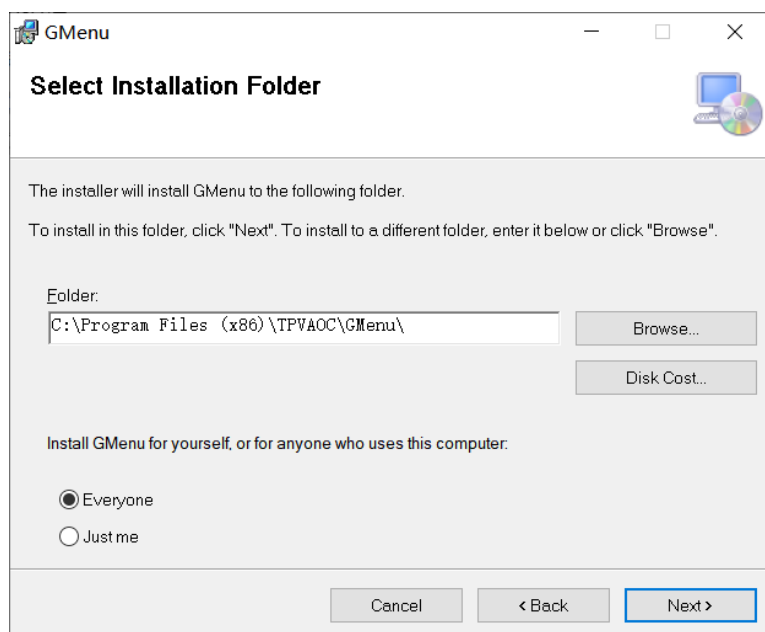
4. Software Installation

Search and download the latest version of AOC G-Menu file from your local/regional AOC official website by <http://www.aoc.com> , and double click the **EXE** file to start the installation.

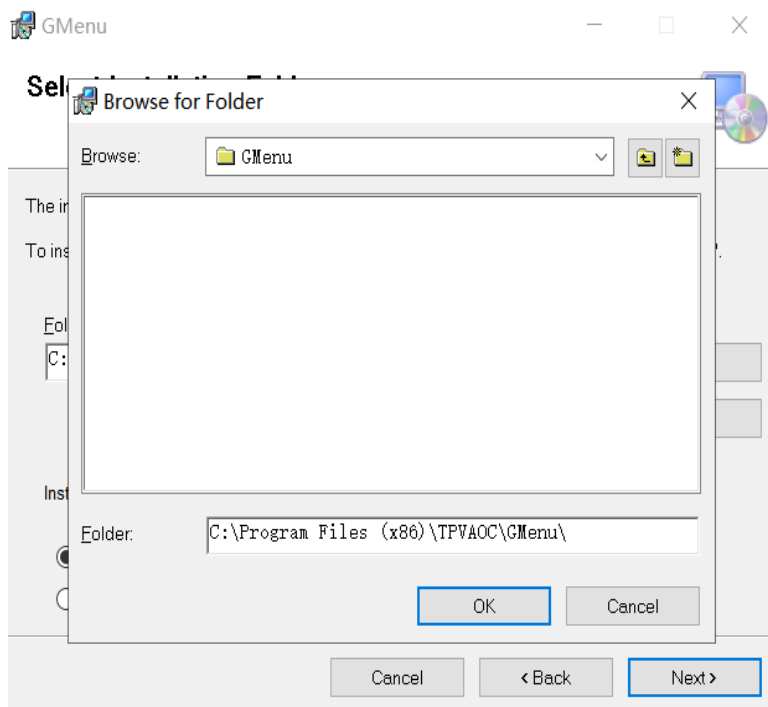
Accept the license agreement by selecting the **I Agree** radio button, and clicking the **Next** button.



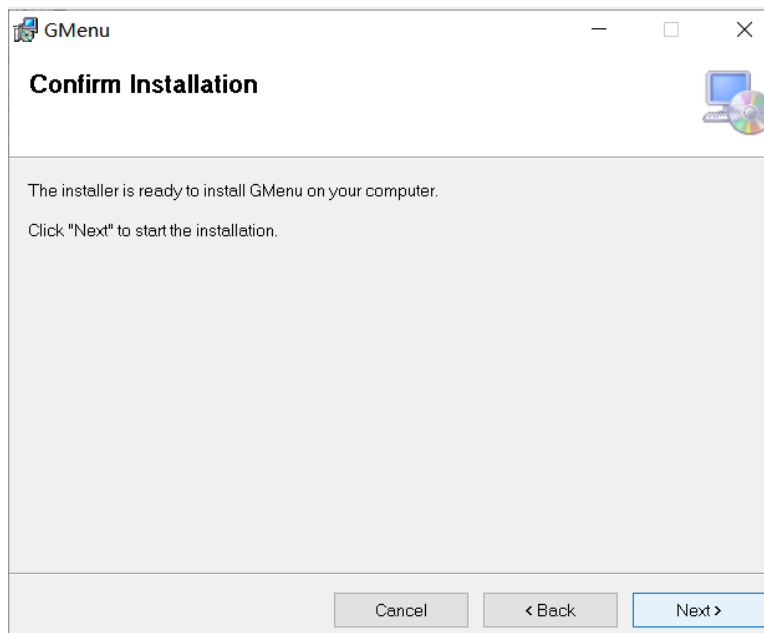
Select the installation folder. Select the default folder by pressing the **Next** button.



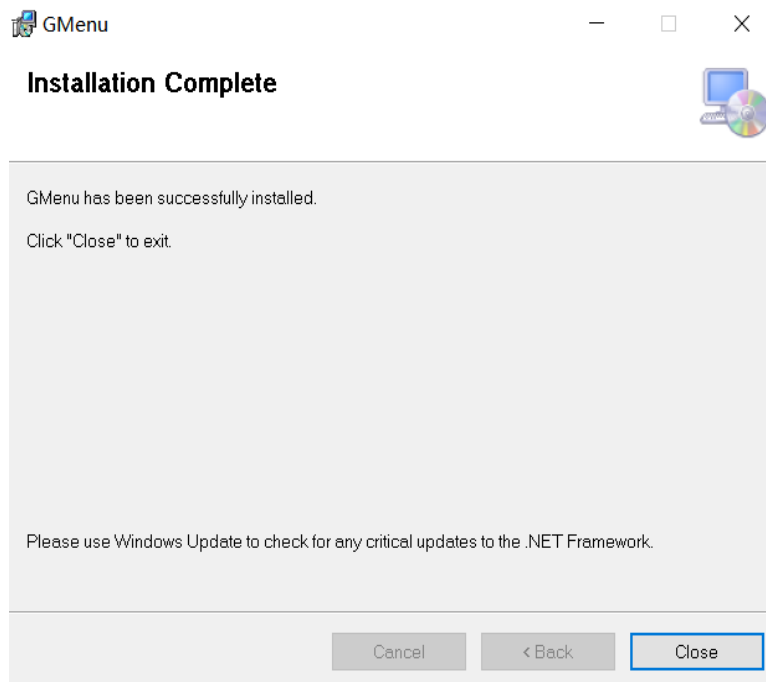
Selecting the **Browse** button will open a **Browse for Folder** dialog box.



Confirm Installation by pressing the **Next** button.



Complete the installation by pressing the **Close** button. Congratulations on installing G-menu!



To uninstall G-Menu:

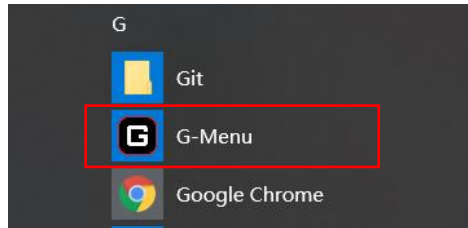
For **Windows 10**: Go to Windows Settings > Apps > Apps and Features > select G-Menu and press the Uninstall button.

For **Windows 7/8/8.1**: Go to Control Panel > Programs > Programs and Features > select G-Menu and press the Uninstall button.

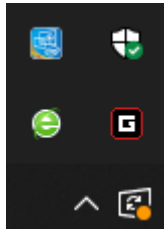
5. Software Running

There are 3 ways to run the AOC G-Menu application.

- Start Menu>G-Menu



- Taskbar>Right click on the taskbar icon



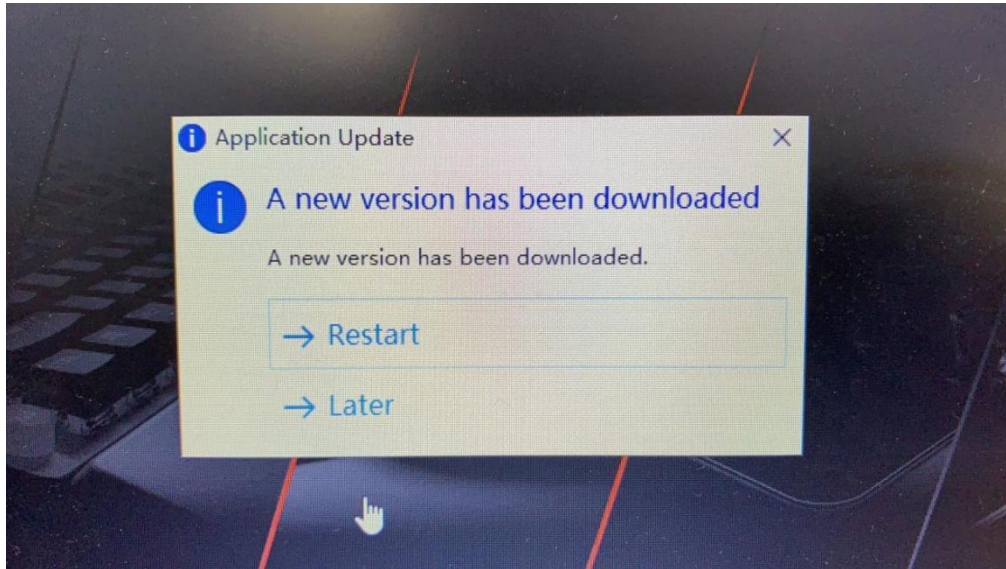
- Double click the shortcut on Desktop



6. Software Update

When you enter the G-Menu home page, the software will automatically check for updates, if there is a new version, it will be downloaded in the background.

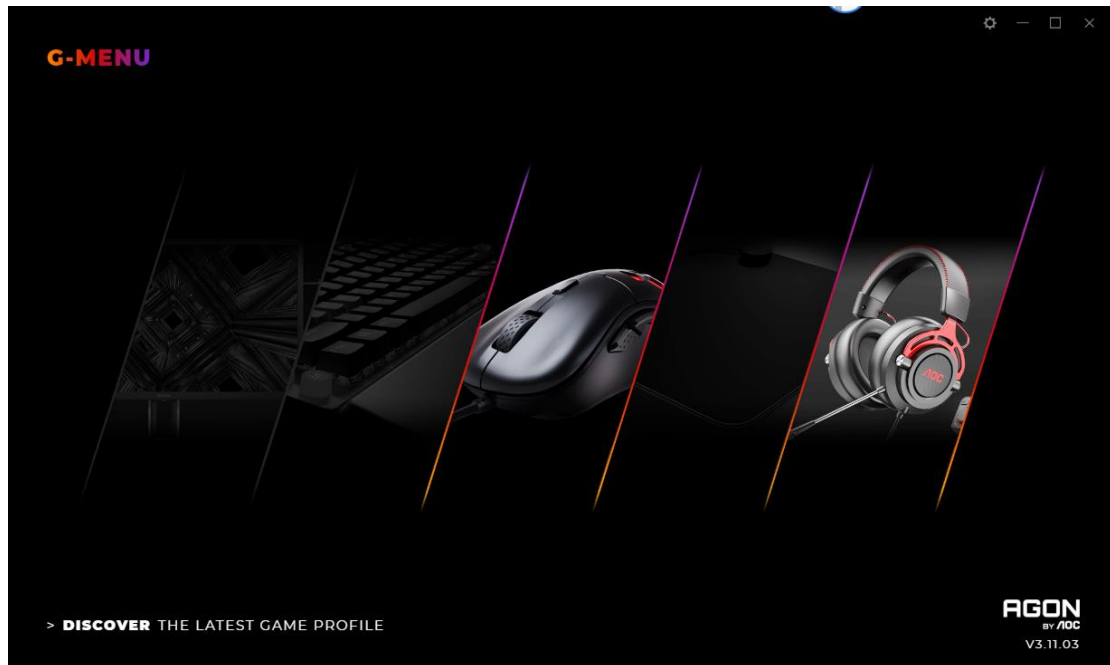
After the download is complete, the interface will alert you to install the update.



- Note: If there is no network connection, G-Menu will not be able to detect updates.

7. Home Page

Open the AOC G-Menu application and enter the home page.



Application name: Displayed on the top left, not clickable.

Brand logo, Software version: Displayed at the bottom right, not clickable.

Minimize/Restore: Displayed at the top right. Click to switch the interface to zoom in/restore the display.

Setting: Displayed at the top right. Click to enter the setting interface, where you can modify the language.

Device display:

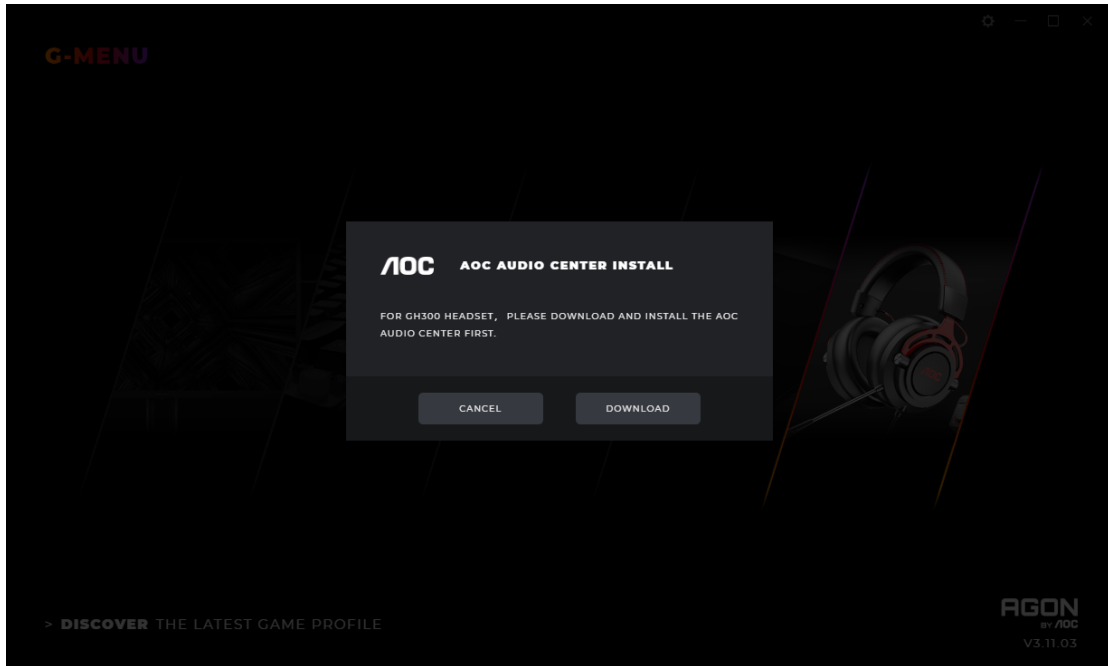
- The device types supported by the current software are displayed by default, including: Monitor, Keyboard, Mouse, Mouse mat, and Headset.
- Currently connected devices are highlighted and may be clicked. Other device types are grayed out and cannot be clicked.
- Click on the device icon to enter the device settings interface.

Discover: Click the **Discover** button to find the latest game profiles.

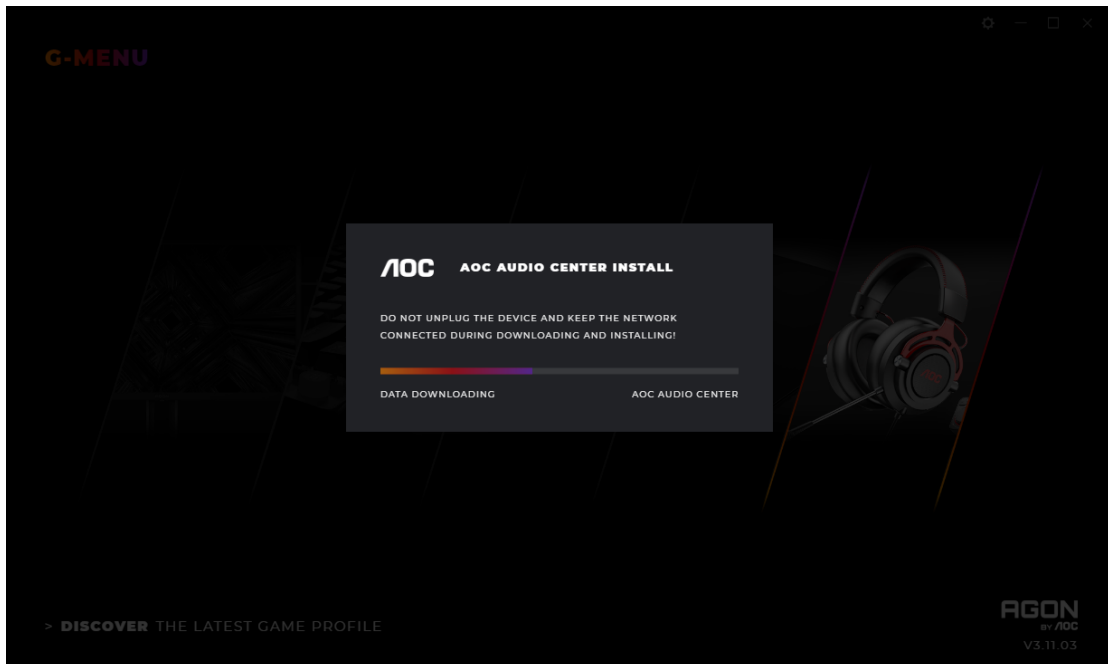
Close: Click the **Close** button to close the application interface, the actual application is still running in the background.

AOC AUDIO CENTER installation (AOC GH300 Headset ONLY)

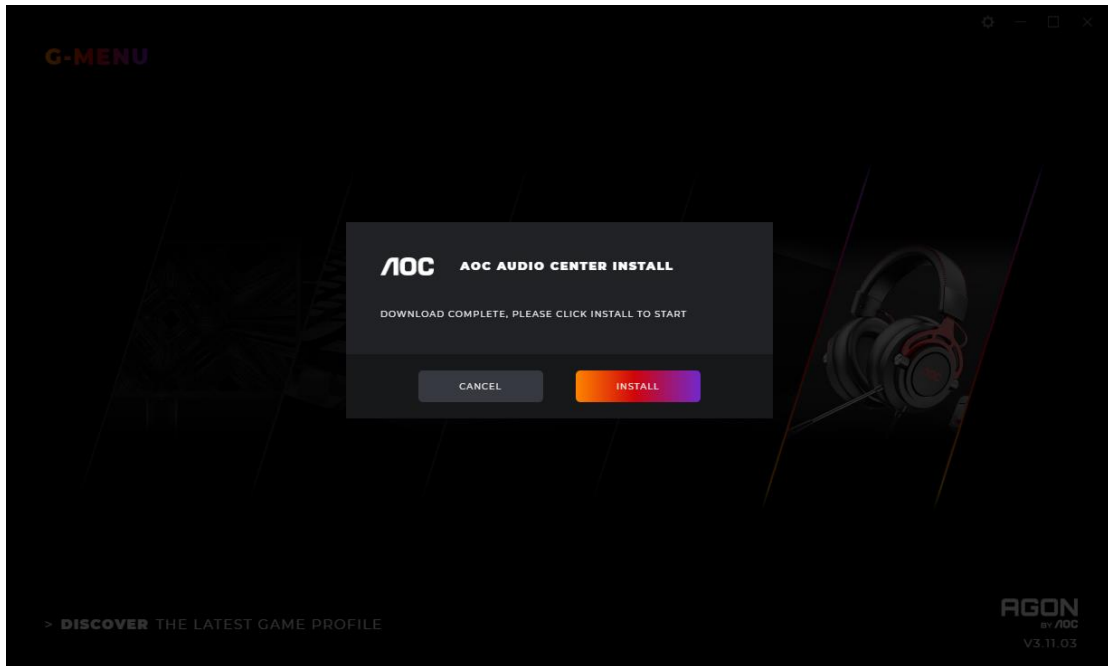
If it's the first time for you to use the AOC GH300 headset, you may need to install the AOC AUDIO CENTER application to activate the audio driver when clicking the headset device icon and prompt will be displayed.



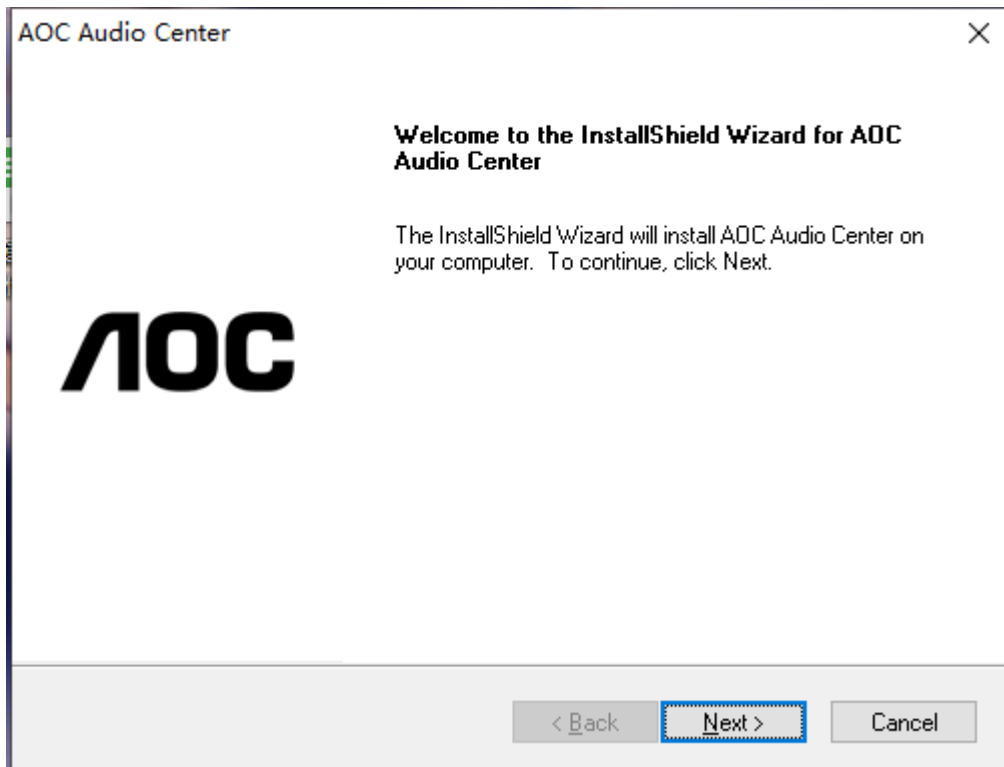
By following the screen prompt, click the "DOWNLOAD" to download the AOC AUDIO CENTER software.



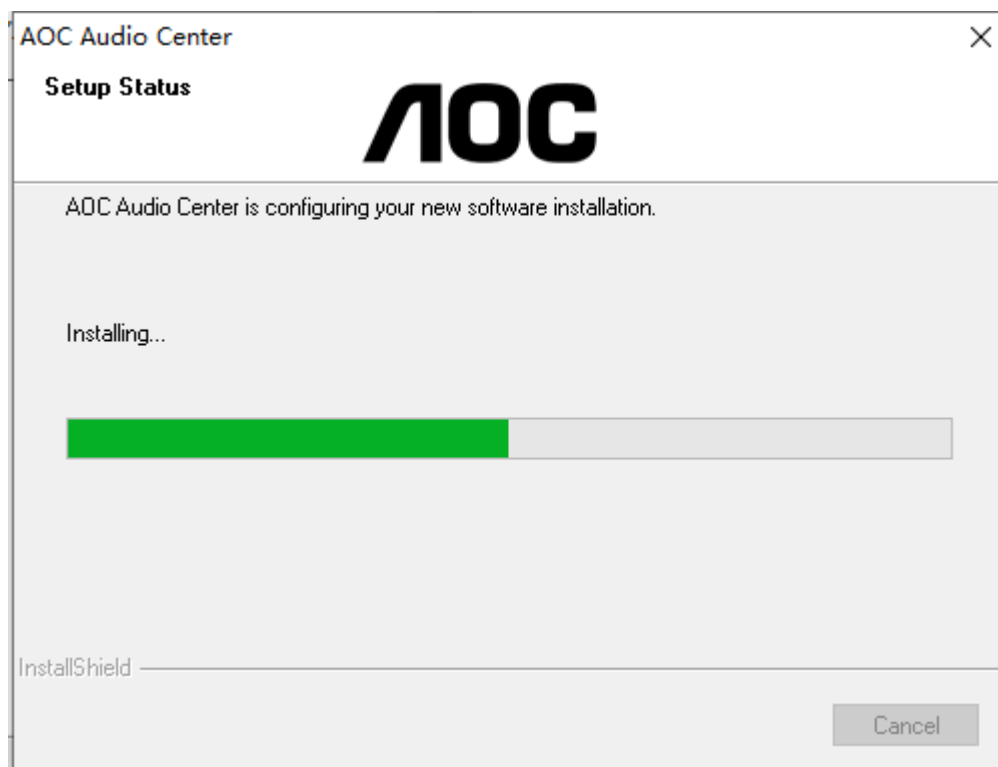
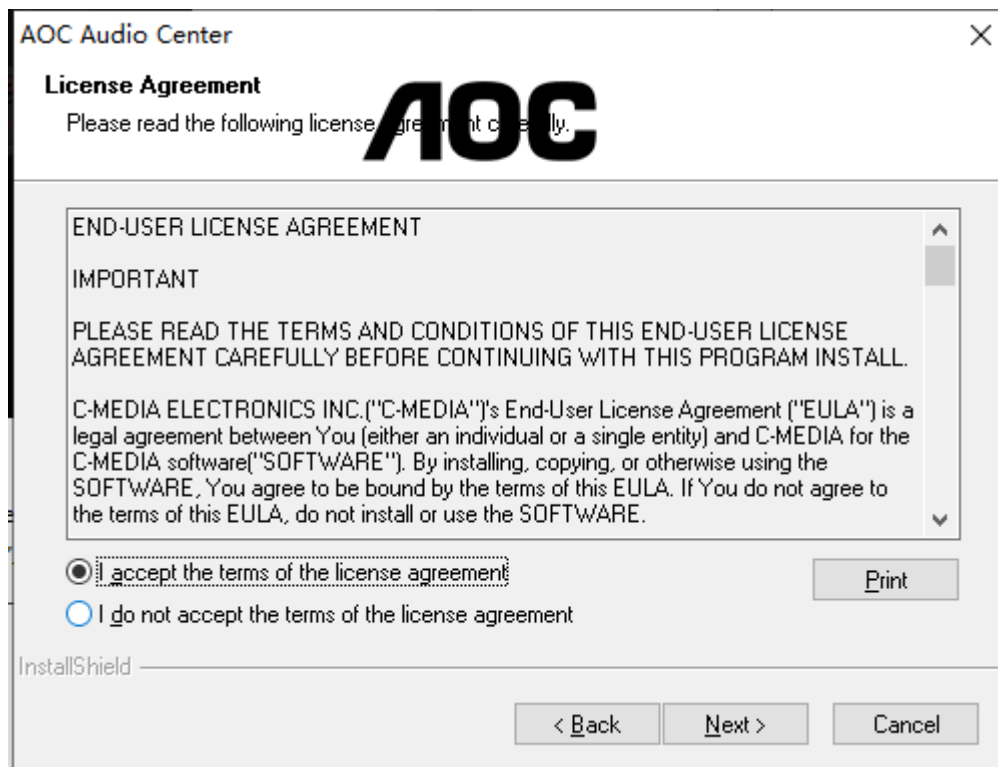
Please don't do anything until the downloading is finished and new prompt is displayed. After the downloading, click "INSTALL" to start the installation of AOC AUDIO CENTER software package.

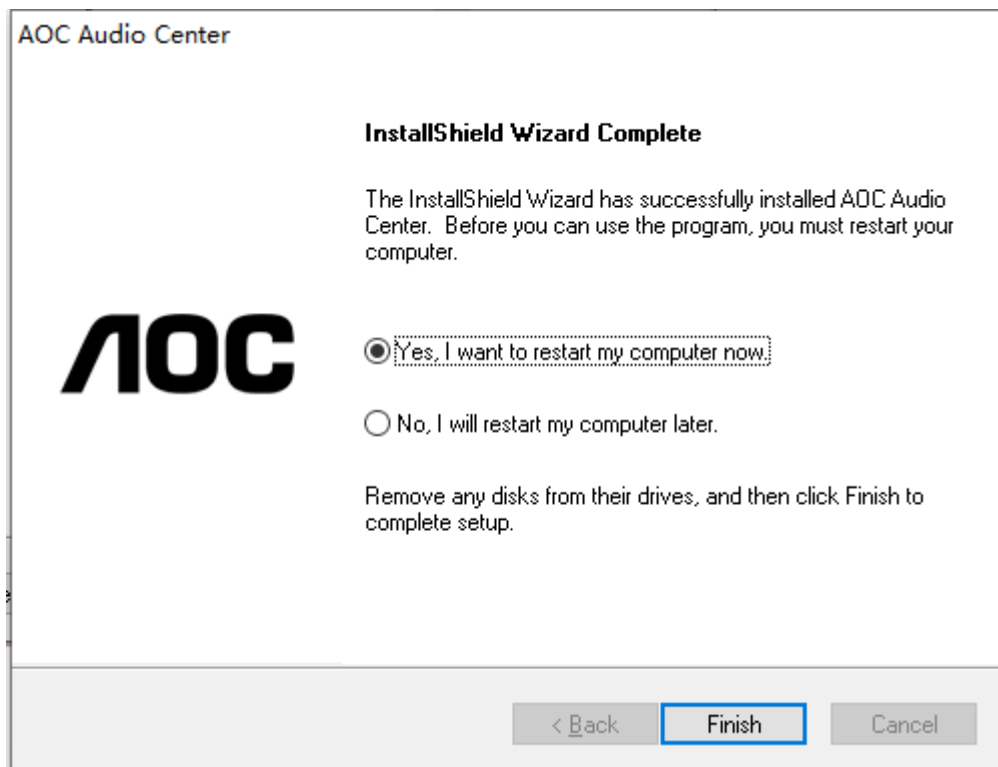
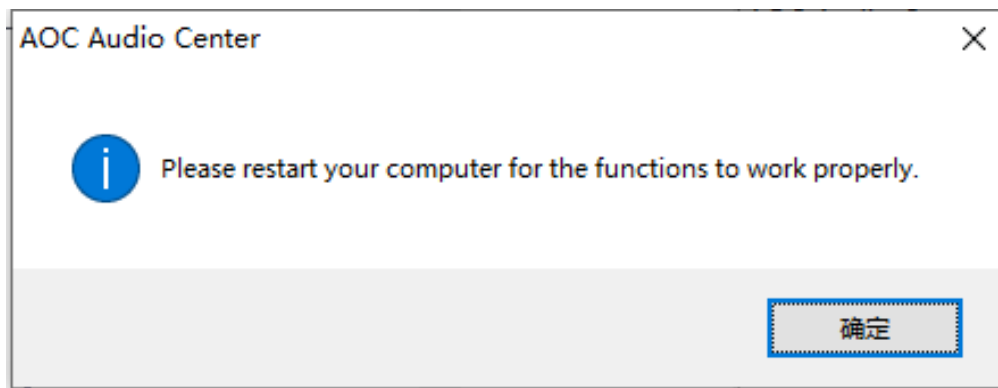


Wait for a while, click "Yes" to permit your system to run the "Setup.exe" if you are receiving an alert about the installation, when the installation interface is displayed, please click "Next".



Choose "I accept the terms of the license agreement" and click "Next".



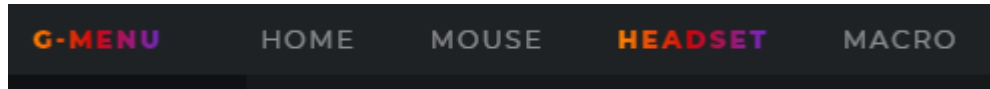


When the installation is finished, you may need to restart your computer.

8. Headset Settings

8.1 General Settings

8.1.1 Top Navigation



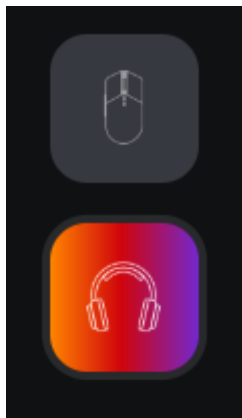
G-Menu navigation options: Home, Monitor, Mouse, Keyboard, Mouse mat, Headset, and Macro.

The unconnected devices will not be displayed.

Click an active button to open the device settings interface.

Click the **Home** button to return to the homepage.

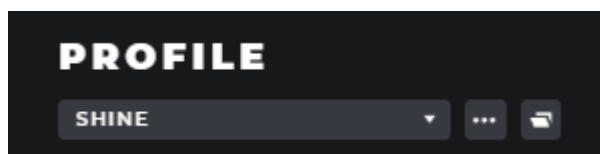
8.1.2 Left Navigation



Navigation button are, from top-to-bottom: Monitor, Keyboard, Mouse, Mouse mat, Headset.

The icons of unconnected devices are hidden.

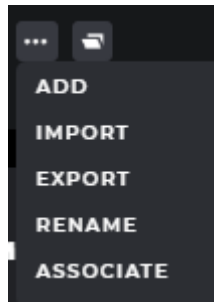
8.1.3 Profile Management



■ Display Profiles

Click on the **Profile** drop-down menu to display all local profiles.

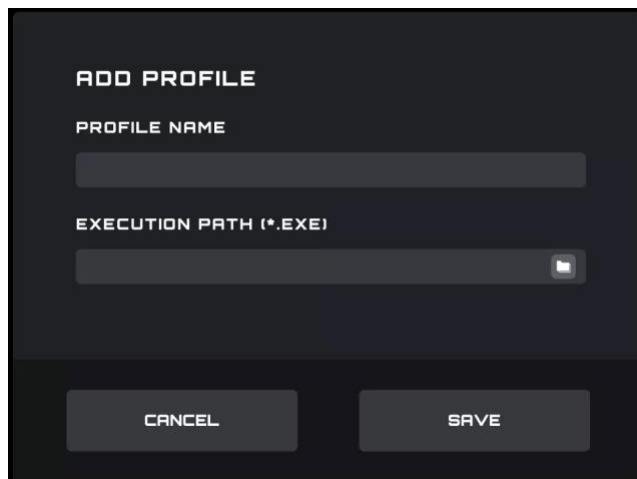
After switching the profile, it will be automatically configured on the current board and takes effect in real time.



■ Manage Profiles

Click the **Meatball** menu to expand the profile selection item: Add, Import, Export, Rename, and Associate.

A) Add



Enter the name of the new profile.

Click the **File** button to open the local executable file or enter the execution path in the input box directly.

Click the **Save** button to add the profile.

Click the **Cancel** button to close the pop-up box.

B) Import

Opens a **File Explorer** dialog box.

Locate the file to import and select it. Press the **OK** button to import the profile.

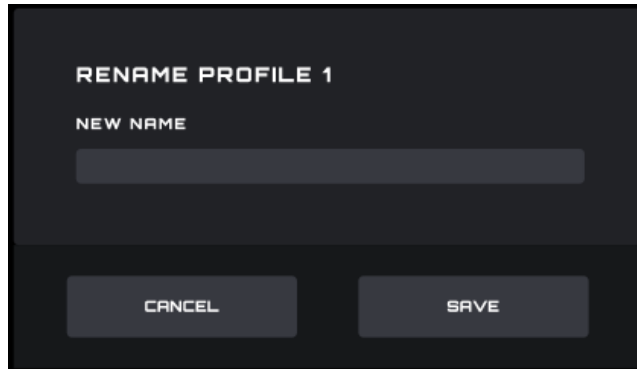
The profile will be imported and populate the currently selected profile. The previous profile will be overwritten with the imported settings.

C) Export

The export command will only export the settings for the current profile.

A **Save** dialog box will open, and you may navigate to where you wish to save the file.
Click the **Save** button to save the exported profile.

D) Rename

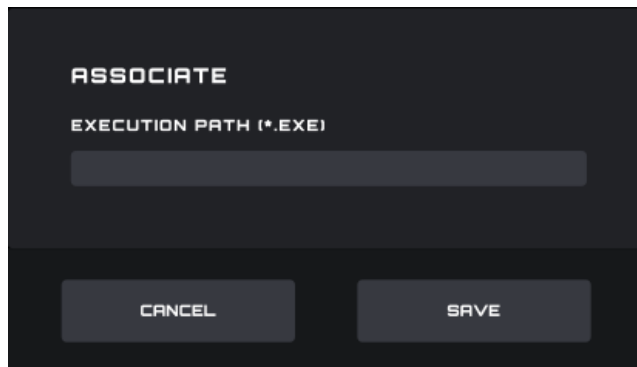


Change the name of the current profile. It cannot be a duplicate of an existing profile name.

Click the **Save** button to save the new name.

Click the **Cancel** button to close the pop-up box.

E) Associate

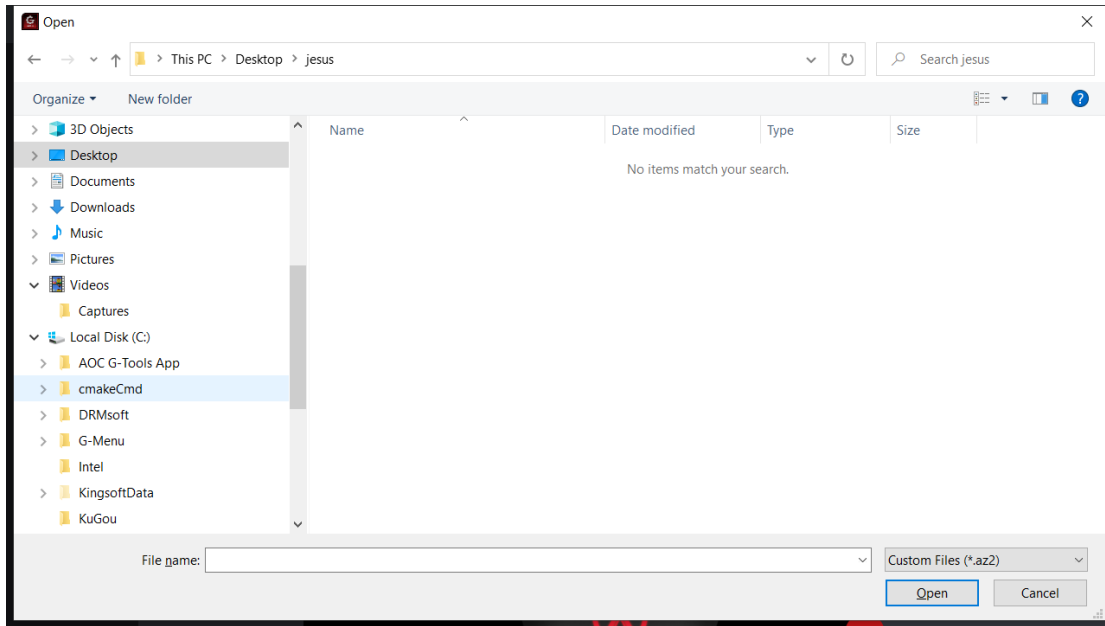


You may associate an executable file to run each time the profile is selected.

Click the **File** button to open a **File Explorer** dialog box that shows **.exe** files.

Or you can directly enter the execution path in the input box.

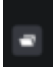
After selecting the application, click the **Open** button, the path will be automatically filled into the input box.

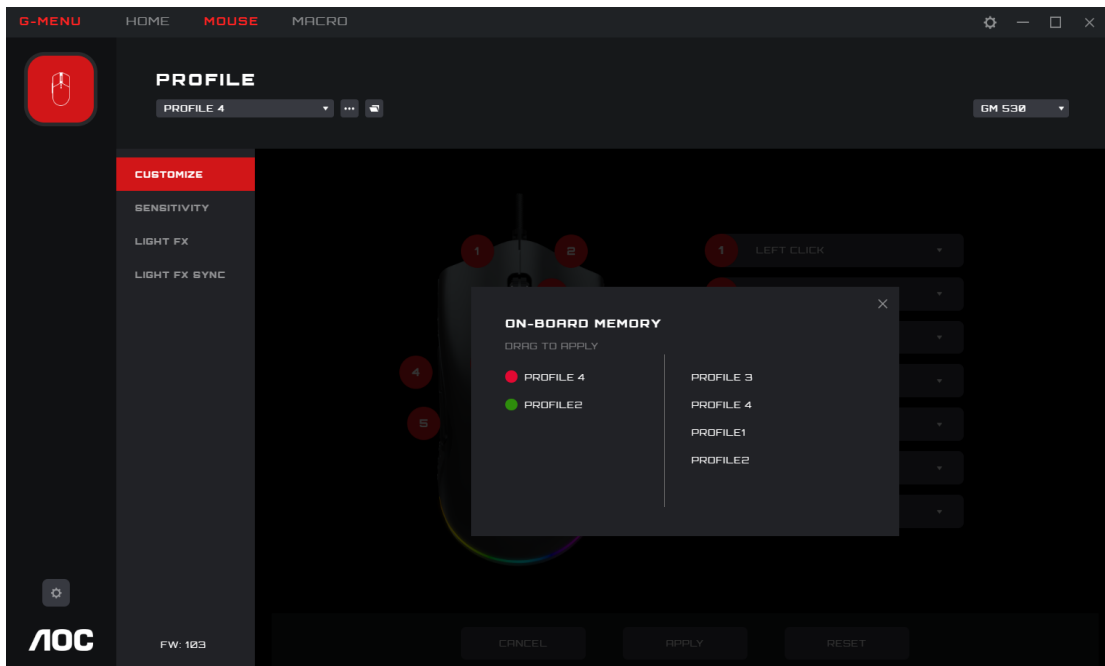


Click the **Save** button to add the application to the profile.

Click the **Cancel** button to close the pop-up box.

8.1.4 On board memory

Click the icon  to open the On-Board Memory pop-up interface

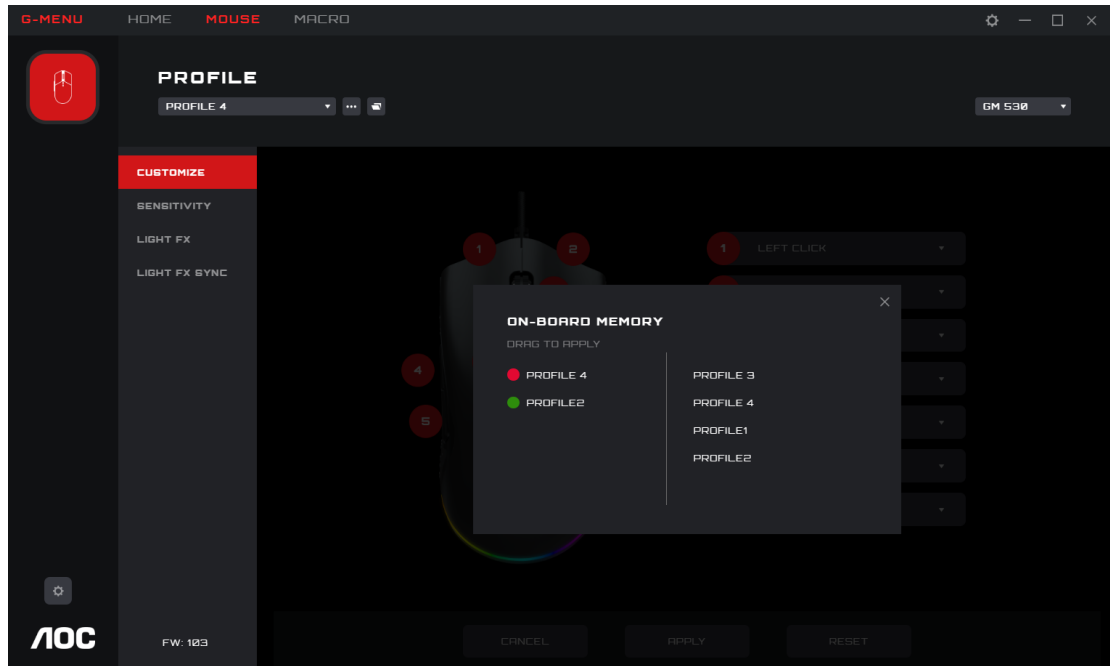


The left side of the interface is the current device onboard; the right side is list of all local profile files.

On-board adaptation: Drag the profile file to the back of the corresponding on-board color. After completion, the profile will be immediately applied to the on-board to take effect.

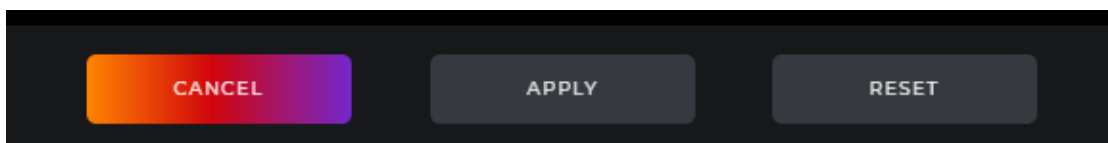
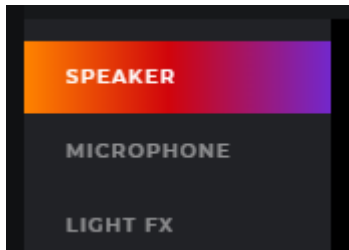
Delete a profile

- Click the delete icon behind the profile to delete it.
- The profile currently in use does not support deletion.
- Click the close icon to close the pop-up window.

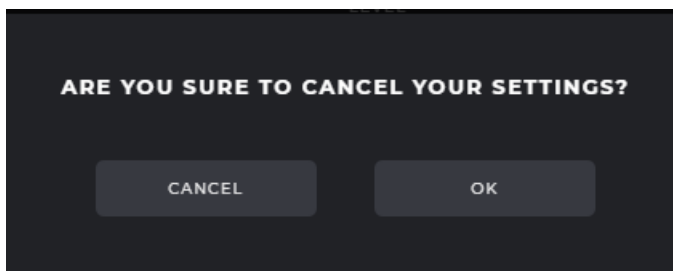


8.2 Headset Settings

Prerequisites: Connect the headset, and click the headset icon on the home page.



The modifications on the headset will be immediately implemented on the headset, however you can click the CANCEL button in the bottom to cancel the modifications you have done, or click the Reset button to set the headset to the default factory settings, or click the APPLY button to confirm and save the settings you have done.

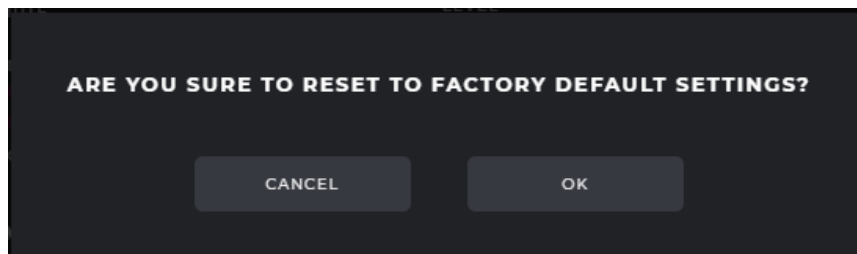


- Cancel

Click the **Cancel** button to cancel this setting and return to the last saved state.

- Apply

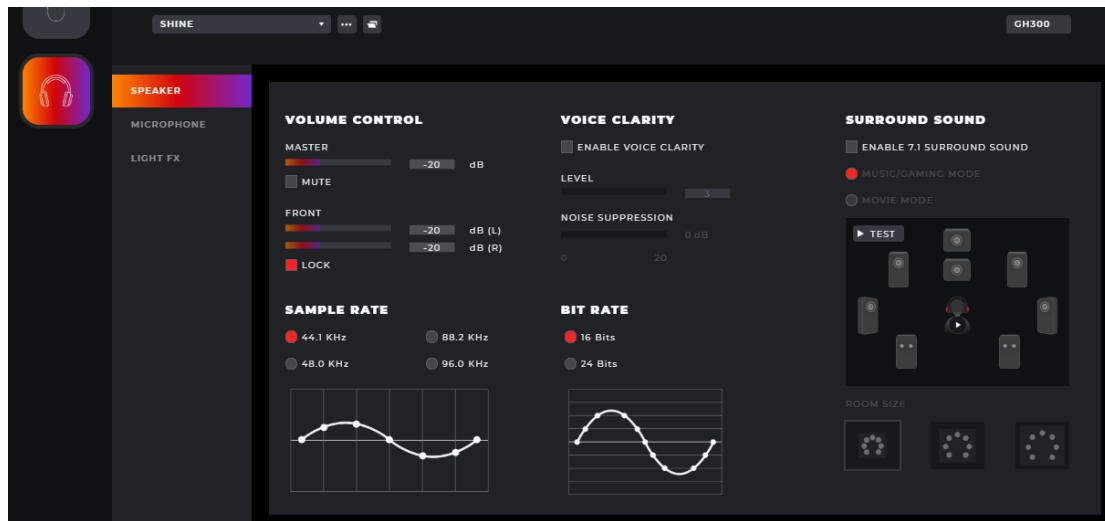
Click the **Apply** button to save this setting



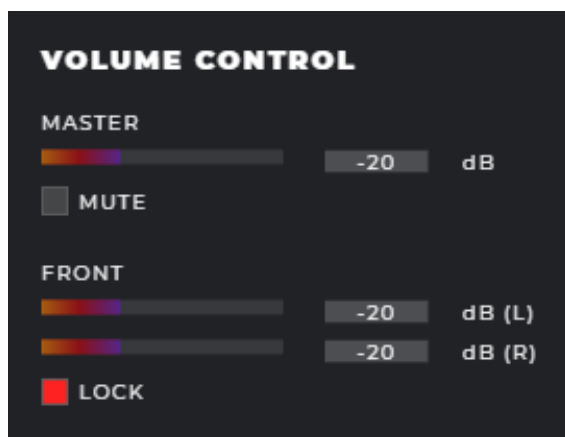
- Reset

Click the **Reset** button to restore the default factory settings.

8.2.1 SPEAKER

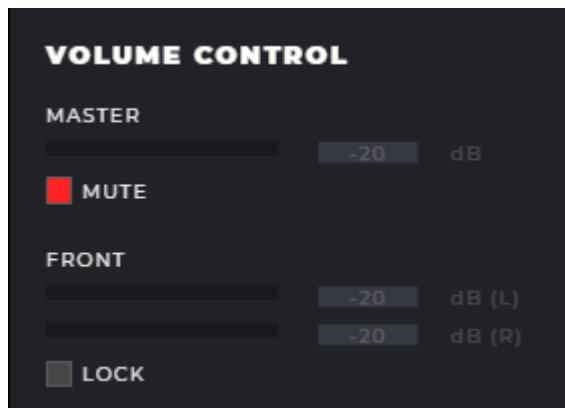


- VOLUME CONTROL (Default MASTER/FRONT= -20dB, LOCK=Enabled, MUTE=Disabled)



You can either adjust the volume of the master speaker (MASTER), or adjust the Left/Right side speakers (FRONT L/R) individually.

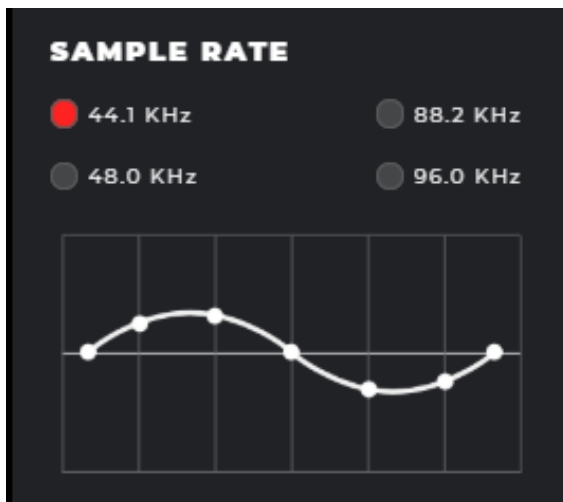
MUTE button can mute the whole master speaker.



LOCK button can make the other side speaker follow the same adjustment you have done on one side speaker.

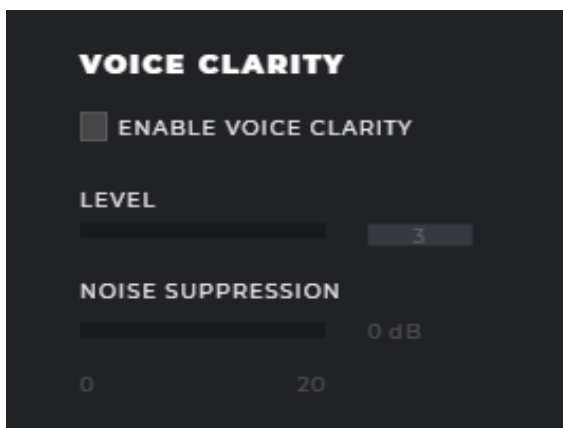


- SAMPLE RATE (Default=44.1 KHz)



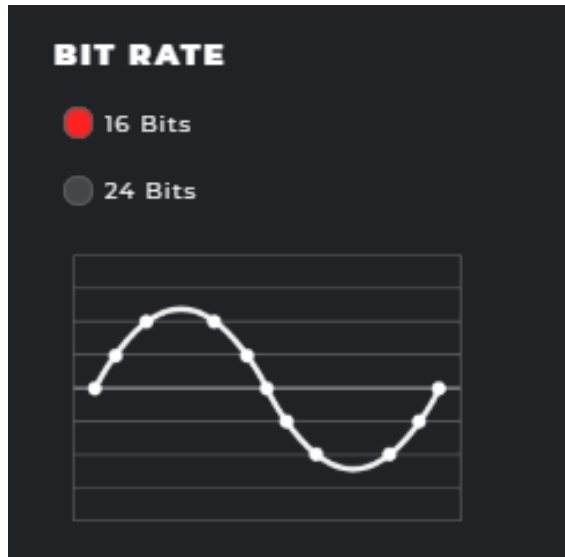
You can adjust the sample rate on the speakers here(44.1/48.0/88.2/96.0KHz).

- VOICE CLARITY (Default=Disabled)



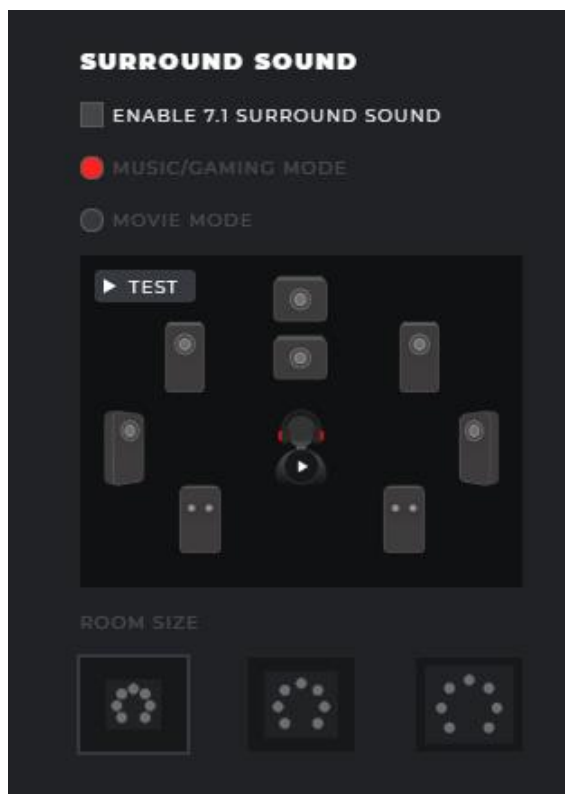
You can enable/disable the Voice Clarity of Speakers here. After enabling the Voice Clarity, you can adjust the Voice Clarity Level (0-6) and the Noise Suppression(0-20dB).

- BIT RATE (Default=16 bits)



You can adjust the bit rate on the speakers here (16/24 Bits).

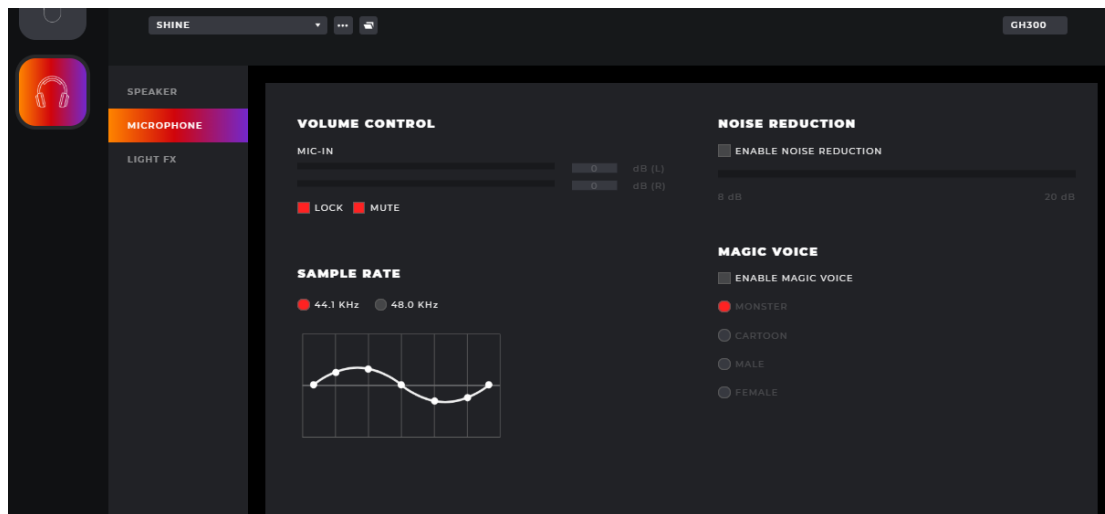
- SURROUND SOUND (Default=Disabled)



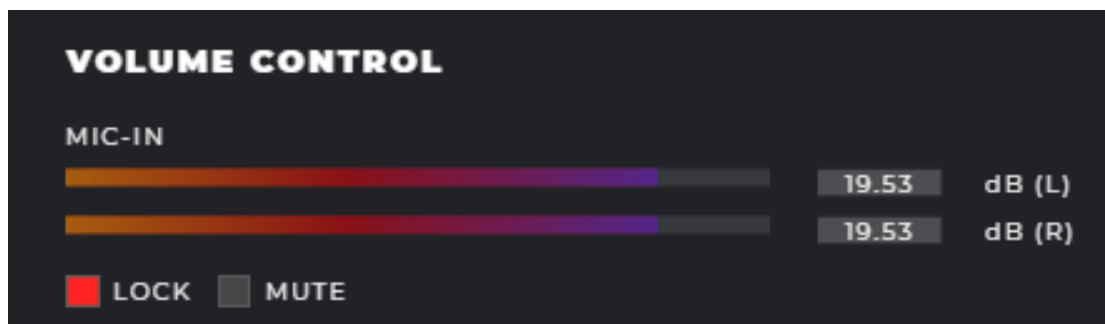
You can enable/disable the 7.1 surround sound here. After enabling the 7.1 surround sound, you can choose between Music/Gaming mode and Movie mode (the 7.1 surround sound will be optimized according to the user scenario), or adjust the room size (Small/Middle/Large, the 7.1 surround sound will be optimized based on the space size).

You can also experience the 7.1 surround sound on the testing audio by clicking the TEST button.

8.2.2 MICROPHONE

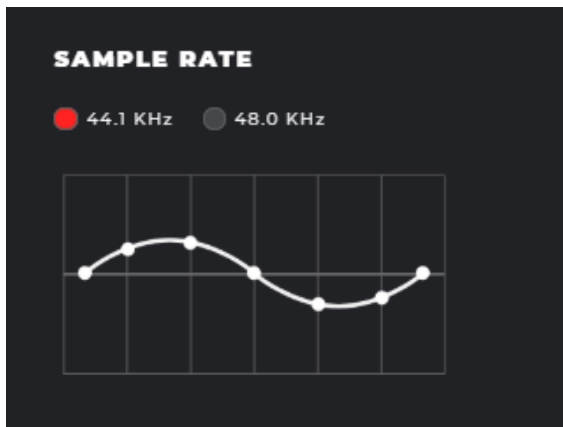


- VOLUME CONTROL (Default MIC-IN= 19.53dB, LOCK=Enabled, MUTE=Disabled)



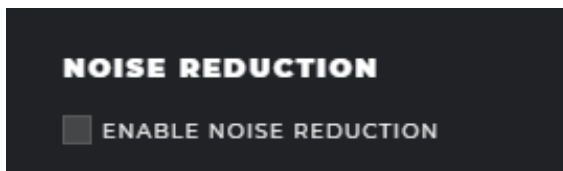
You can either adjust the overall mic volume (LOCK button=Enabled), or adjust the Left/Right side mic volume (FRONT L/R) individually (LOCK button=Disabled). You can mute/unmute the mic by enable/disable the MUTE button as well.

- SAMPLE RATE (Default=44.1 KHz)



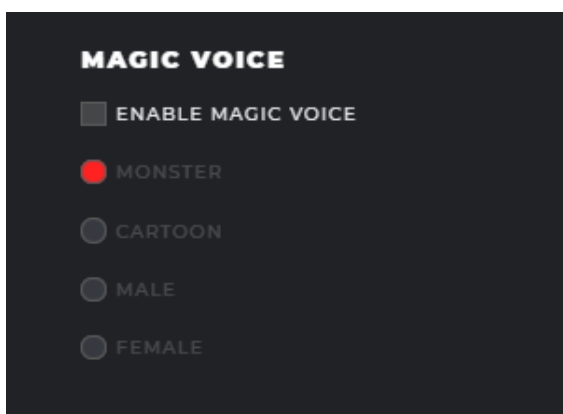
You can adjust the sample rate on the microphone here(44.1/48.0KHz).

- NOISE REDUCTION (Default=Disabled)



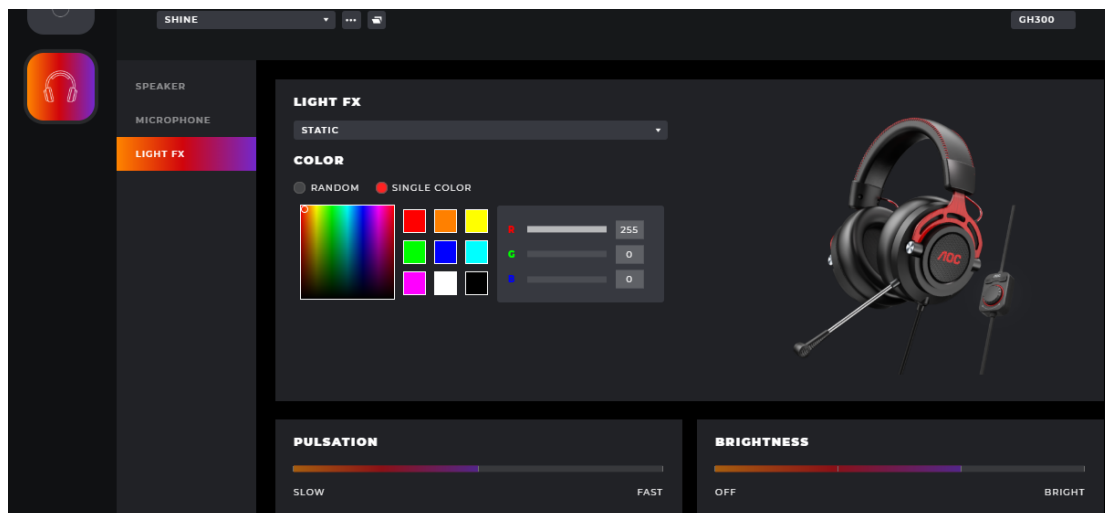
You can enable/disable the Noise Reduction on the microphone here.

- MAGIC VOICE(Default=Disabled)



You can enable/disable the Magic Voice on the microphone here. After enabling the Magic Voice, you can change your real voice by one of the four virtual magic voices MONSTER/CARTOON/MALE/FEMALE.

8.2.3 LIGHT FX



- LIGHT FX

Click drop-down box to select a light effect.

- COLOR

- RANDOM: Let the computer select a random color.

- SINGLE COLOR: A color can be selected from the color palette, color block, or a color can be defined by entering RGB values.

- PULSATION

Select how fast the color will change.

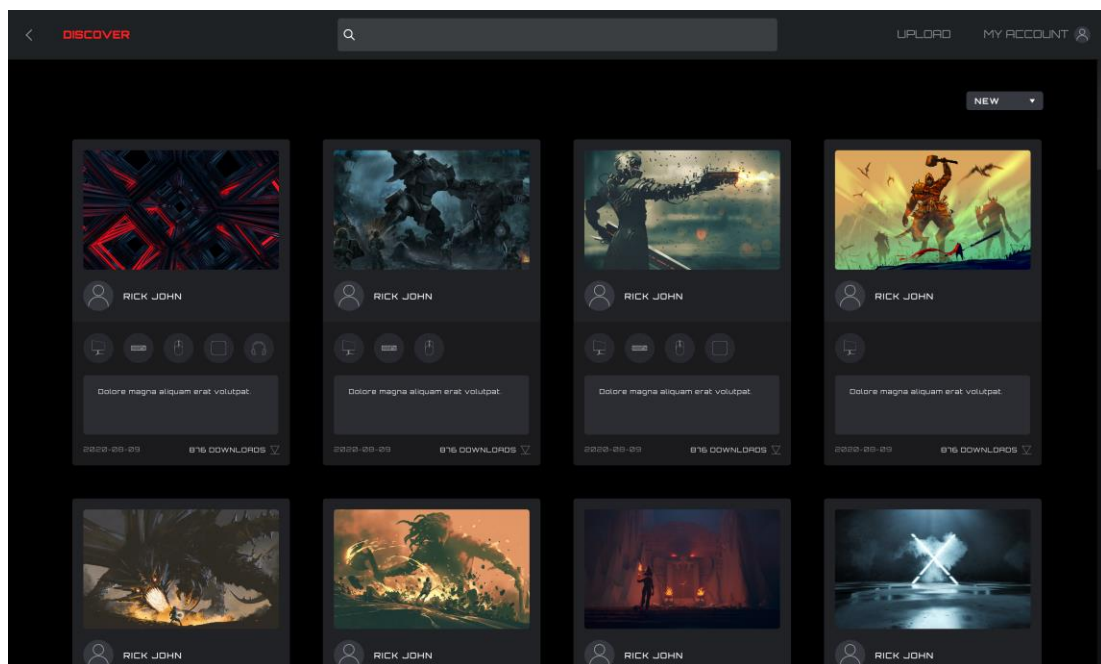
- BRIGHTNESS

Select the brightness the color will glow or turn off.

9. Discovery



Discover and share profiles with others on the G-Menu network.



9.1 Back

Click the < **(Back)** button to return to the main menu.

9.2 Discover

Click the **Discover** button in the upper left corner to refresh the screen.

9.3 Search Bar

Click in the **Search** bar to find profiles containing the search term in the publisher, title or description.

9.4 Upload

Click on the **Upload** button to open the upload interface.

If not logged in, the login interface opens.

9.5 My Account

Displays the current account name and avatar. If the name is too long, it will be shown truncated with an ellipsis "...".

If not logged in, enter the login credentials and click the Login button. See below for creating an account.

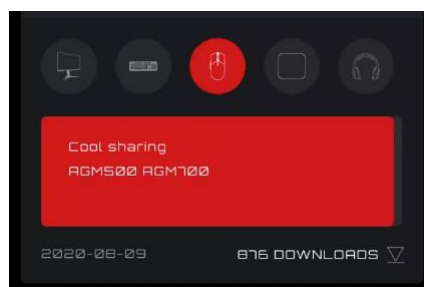
9.6 Profiles

Select a sorting method from the drop-down menu:

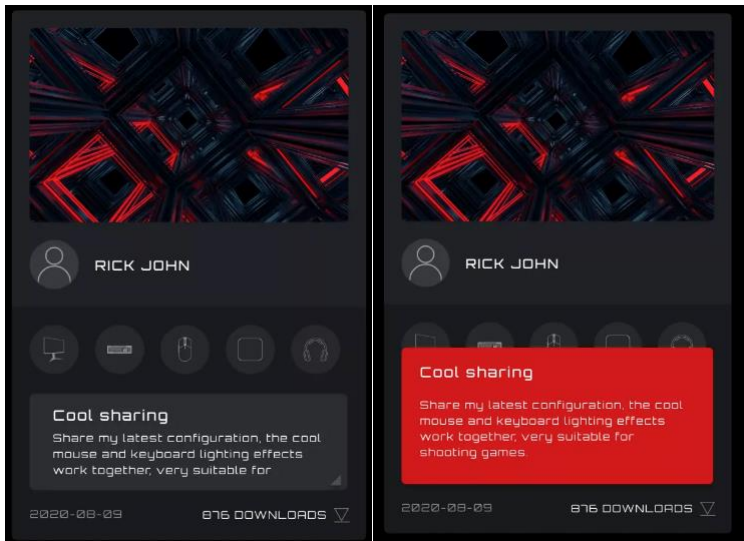
- **Hot** (default): Displays the most popular profiles.
- **New**: Displays the newest profiles.

Profile Details

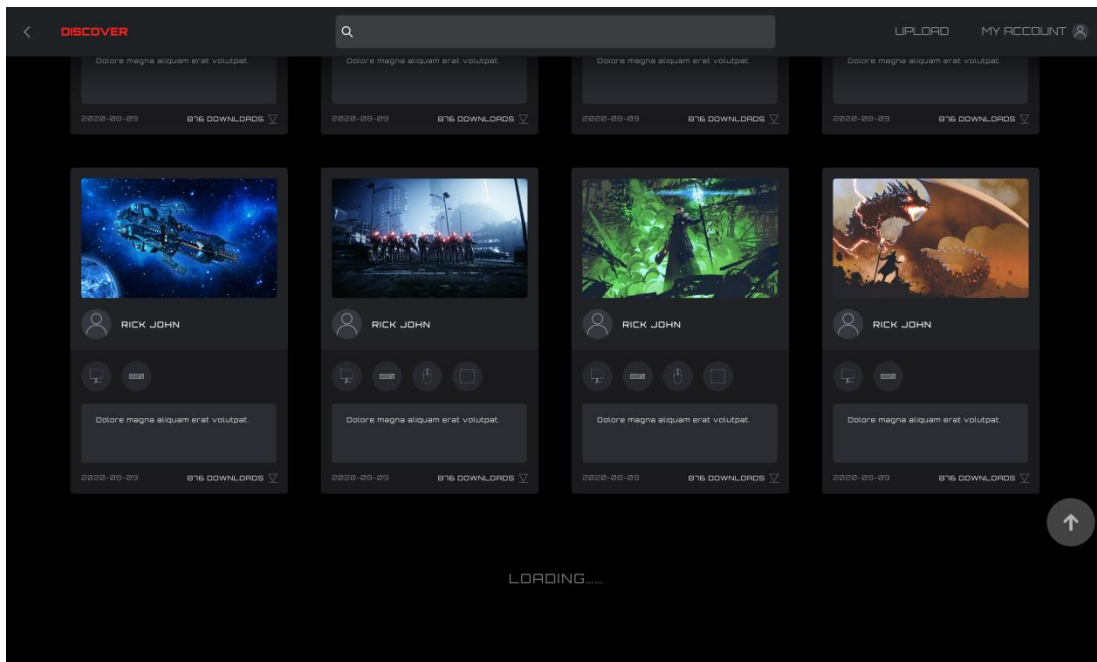
- **Cover image**: Each profile comes with a cover image.
- **Publisher name**: The account that created and uploaded the profile.
- **Supported devices**: Select the icon to reveal the supported model details.



- **Profile Title and Introduction**
 - ◆ The profile's title and description, click on the ellipsis "...". Maximum 50 characters.

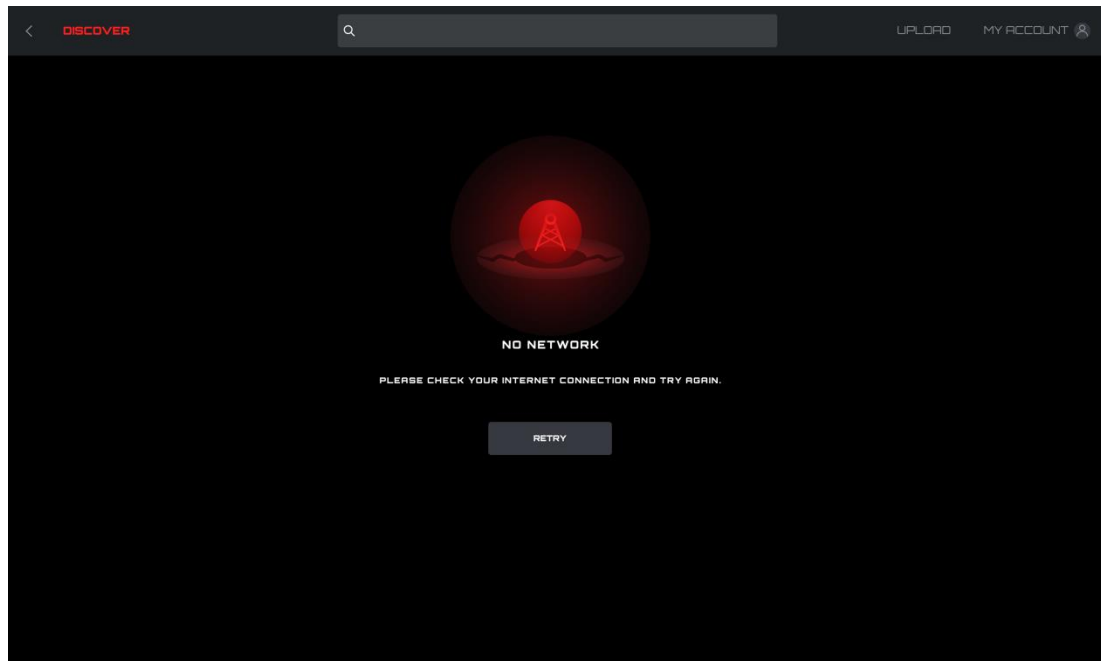


- Upload Date: When the profile was uploaded, in year-month-day (yyyy-mm-dd) format.
 - Downloads: Shows how often the profile was downloaded.
 - Download Icon: Click on the **Download** button to download the profile.
 - Once the profile has been downloaded, the profile will be available for configuration. Click the **Configure** button to enter the configuration dialog box.
- Load a Profile
 - Double-click on a profile to load a profile for use.



9.7 If the network cannot be reached the following error screen will appear.

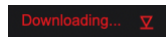
- Click the **Retry** button to try connecting again.



9.8 Download Profile

9.8.1 Click the **Download** button to start downloading the selected profile.

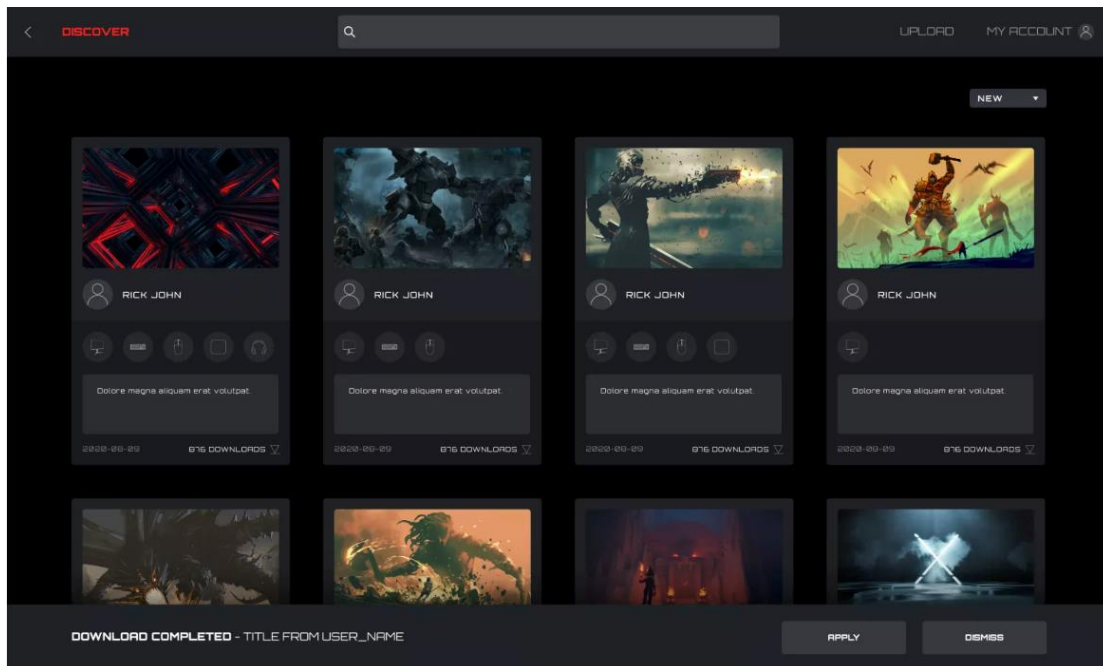
This display will change to 'Downloading...!'.



9.8.2 After the download is complete.

Click the **Apply** button to begin configuration.

Click the **Dismiss** button to configure later.



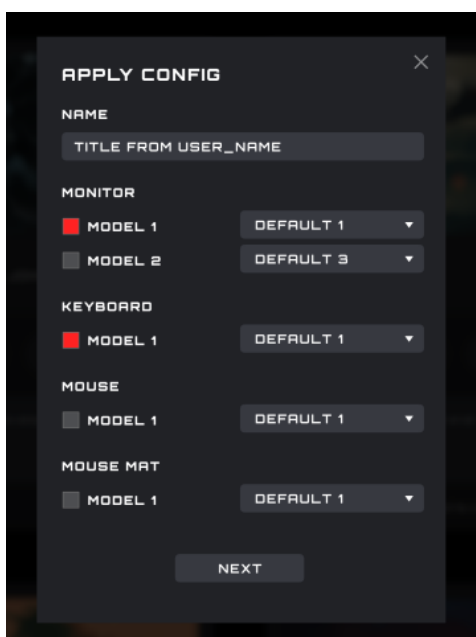
9.8.3 Abnormal situation

If the download is interrupted, the software will attempt to continue or you may re-download later.

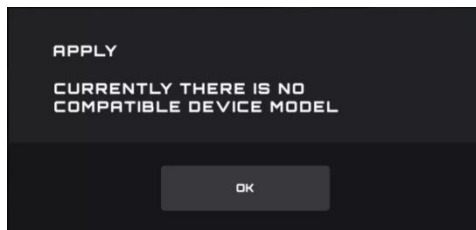
9.9 Configure Profile

9.9.1 When the profile download is complete, click the **Apply** button.

Enter the **Profile Configuration**.

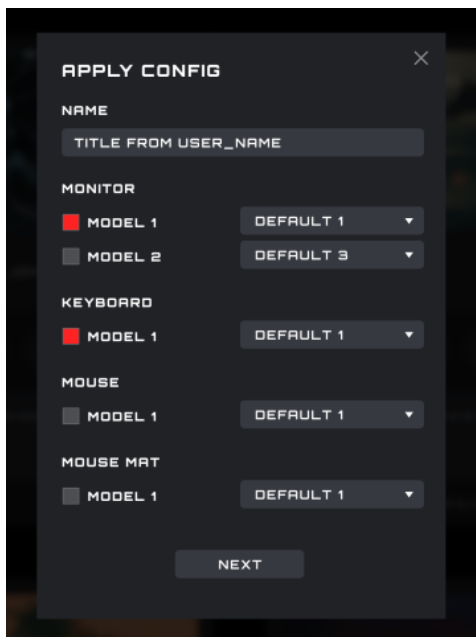


If there is currently no compatible device available an error will appear.



- Click the **OK** button to close.

9.9.2 Configure



- Name

Enter a name for the configuration.

- Devices

Select your specific device models.

- Profile

The current profile is displayed by default, and the selection cannot be switched.

- Close

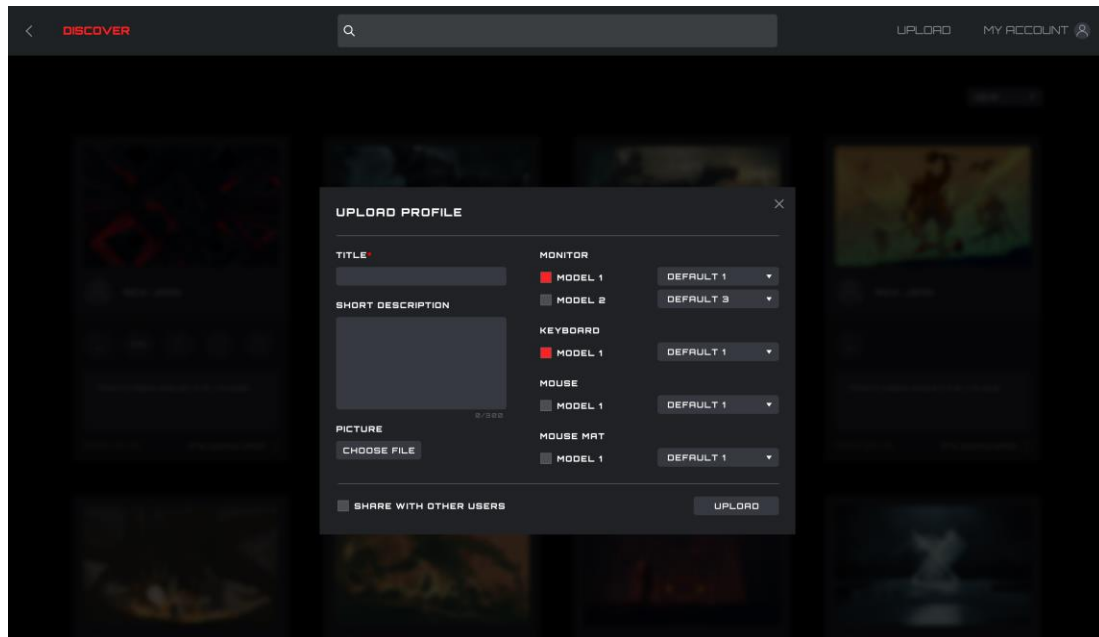
Click the **Close** button to cancel the configuration.

- Next

Click the **Next** button to apply the current profile to your device(s).

9.10 Upload Profile

Configure a profile and upload to share with others.



- Title

Enter a title. This is a required field.

The number of input characters is limited to 50 characters.

- Short description

Enter a description of the profile. The character limit is 300.

- Picture

Click the **Choose File** button to open a File Explorer dialog box to add a picture to the profile.

- Monitor, Keyboard, Mouse, and Mouse Pad Models

With the checkboxes, select the connected devices and device models for this profile.

- Select a profile

Select an existing profile to use with each device.

- Share with Other Users

Enabled: Shares this profile with the public.

Disabled: Only visible in your **My Upload** screen.

- Upload

Click the **Upload** button to upload the profile.

- Close

Click the **Close** button to cancel upload.

After the upload is successful, the **“Upload Successfully!”** pop-up dialog box will appear.

9.11 Search



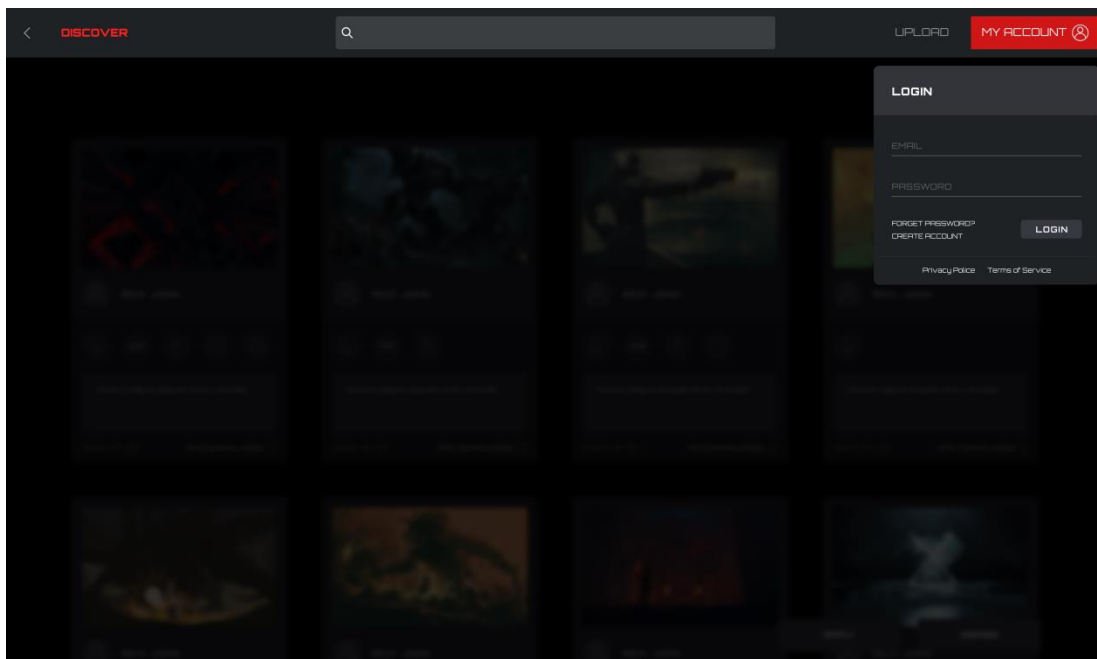
Prerequisite: Click the search bar

Supports search of the publisher, profile name, and description text.

9.12 Login

Log into your account.

When not logged in, you may also click on the **Upload** button to enter the login interface.



- EMAIL

Enter your Email address.

- PASSWORD

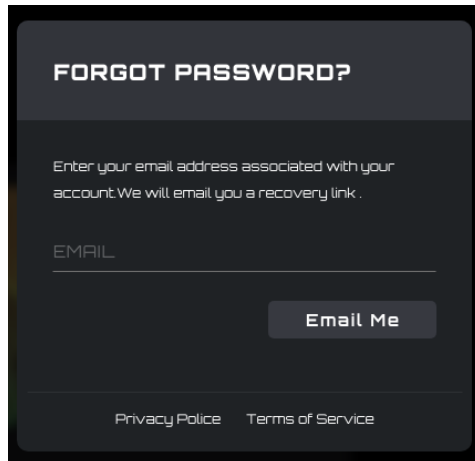
Enter your password.

- LOGIN

Click the **Login** button to log into your account.

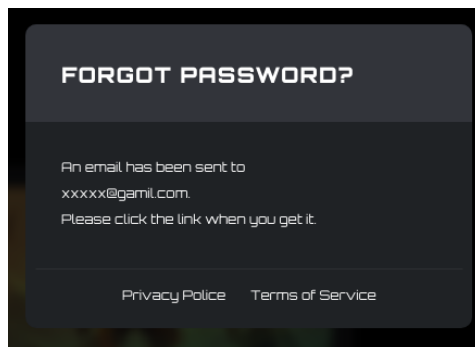
- **FORGOT PASSWORD**

Click the **Forgot Password** button to reset your password. For more information, see below.



To reset your password: Enter the email address associated with your account. A recovery link will be sent.

Click the **Email Me** button to have the password reset email being sent to the email address input above.



Login to your email address input above and open the Password Reset email and click the **Reset Password** button:



You are receiving this because you (or someone else) requested the reset of the account.

Please click on the following link in 2 hours:

[Reset Password](#)

Or copy and paste the following link to open it in your browser? <http://acc-gmenu.zeasn.tv/resetPassword?resetToken=10e7e0f1aa8da244789d8e3cac7e296233>

If you received this in error, you can safely ignore it.

Alternatively, copy and paste the link into your browser to open it there and the link is valid for 2 hours.

After clicking the Reset Password button, the Password reset interface is displayed as below:



Reset Password

Please enter a password with no less than 6 characters.

New Password

Re-enter Your New Password

[Reset Password](#)

You can enter and confirm a password containing between 6 to 18 characters (numbers or letters).

And click the **Reset** Password button:

- If the passwords match and pass verification, the password is changes, and the success dialog box appears.

АОС



Password has been reset successfully!

You can try to log in to your account again on the client

Possible error message: "The reset password link has expired"

АОС

The reset password link has expired

You can select "Forgot Password" in the G-menu client to receive emails again

- CREATE ACCOUNT.

Click the **Create Account** button to create an account.

CREATE ACCOUNT

FULL NAME

EMAIL

PASSWORD

CONFIRM PASSWORD

NEXT

Creating an account means you're okay with our [Terms of Service](#) and [Our Privacy Policy](#)

◆ Full Name

Enter your name.

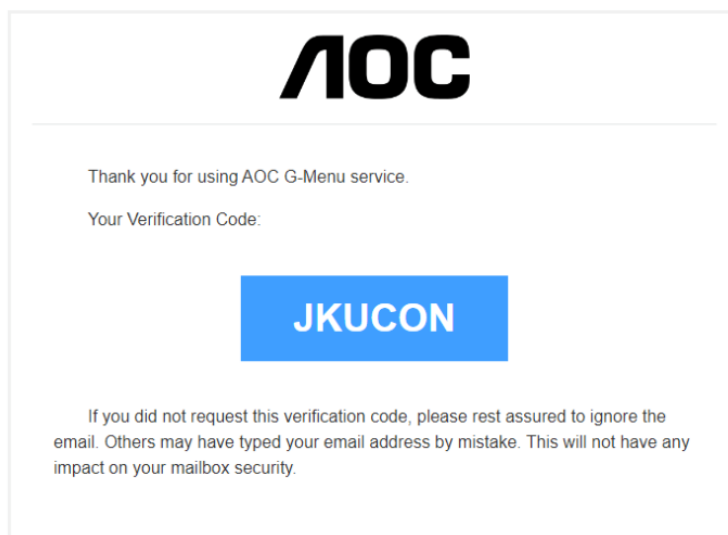
◆ Email

Enter your email address.

◆ Password and Confirm Password

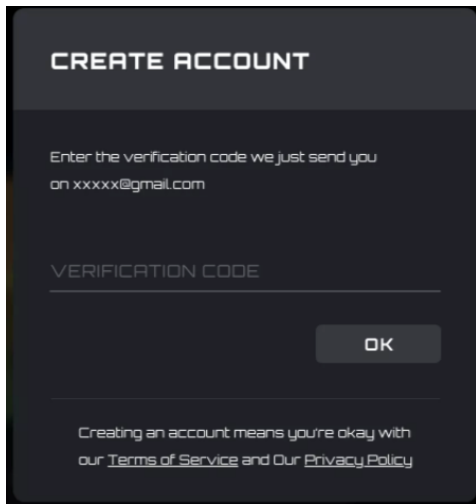
Enter and confirm a password. From 6-18 characters (letters, digits or special characters).

Click the **Next** button to receive a verification code email. The code will expire in 15 minutes.



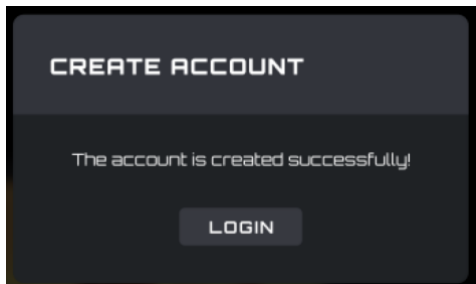
◆ Verification code confirmation

Enter the verification code you received.



Click the **OK** button:

- If the verification code is correct, it will prompt that the account is created successfully, click the **Login** button to re-enter the account login interface.



- If the verification code is wrong, the error "The verification code is wrong" will appear.
- If the verification code is expired, the error "Verification code has expired" will appear.

- Privacy Policy

Click the **Privacy Policy** button to read the privacy policy for this software.

- Terms of Service

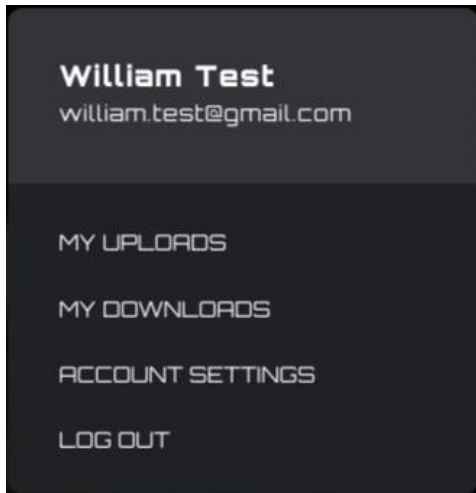
Click the **Terms of Service** button to read the Terms of Service for this software.

- Back

Click in the main window to dismiss the menu.

9.13 My Account

Prerequisite: You must be logged in to access your account information.



Click on the **My Account** button to display the account information.

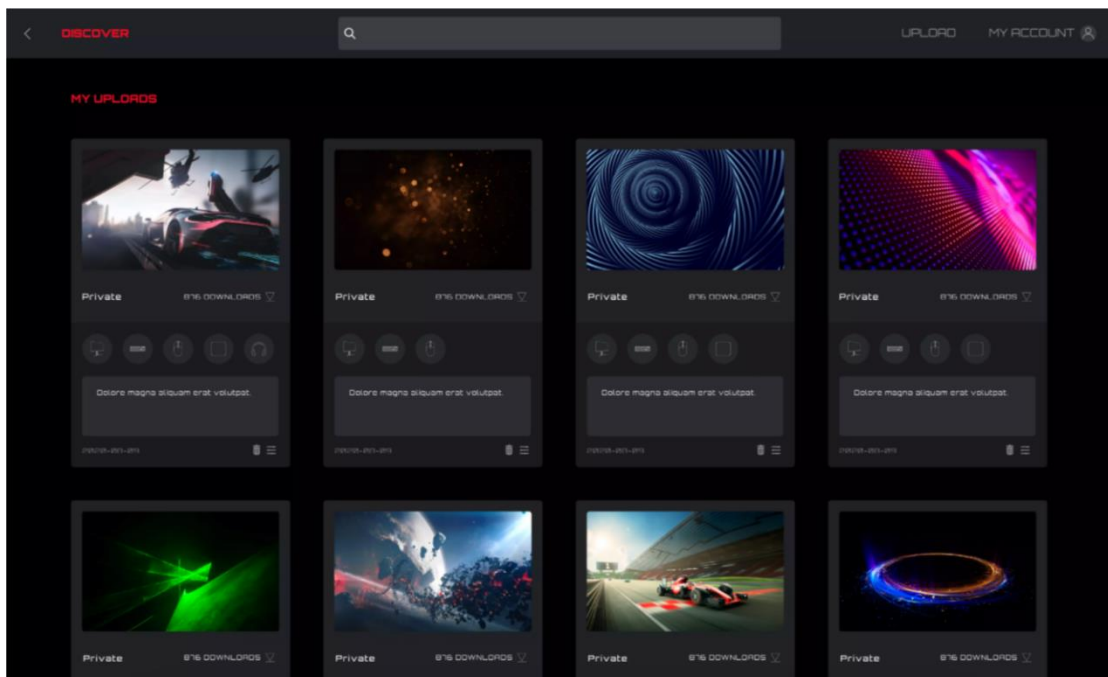
Click the **My Uploads** button to enter the **My Uploads** interface.

Click the **My Downloads** button to enter the **My Downloads** interface.

Click the **Account Setting** button to enter the **Account Settings** interface.

Click the **Log out** button to log the account out of the device.

9.13.1 My uploads



Click the **Discover** button to return to the discover homepage.

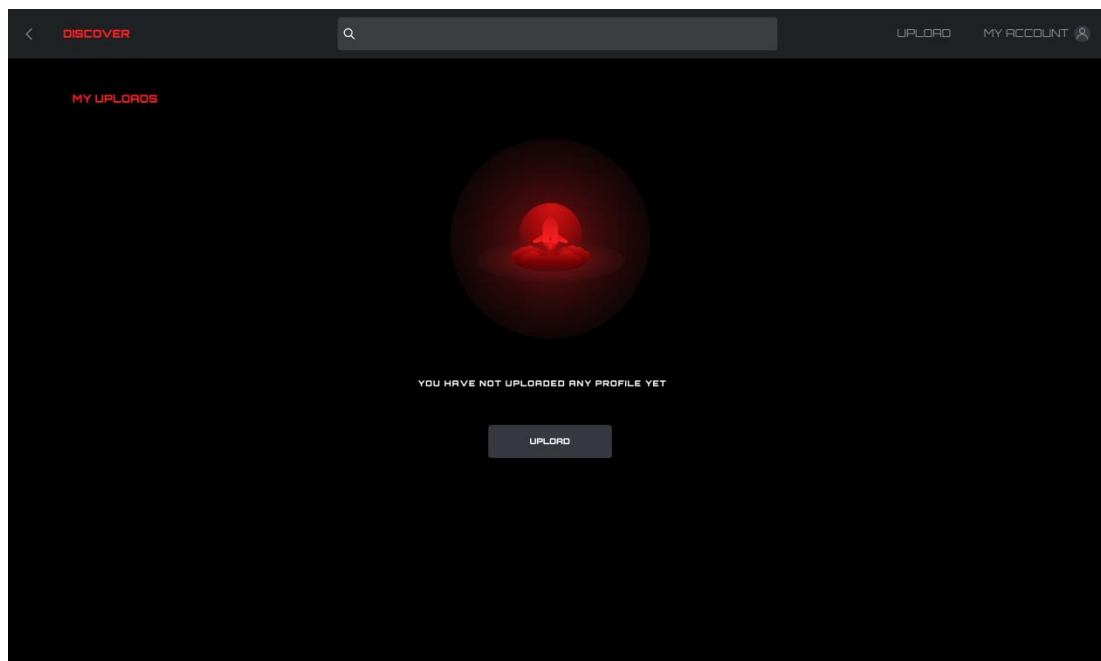
Click the **Back** button to return to the main menu.

Profile content:

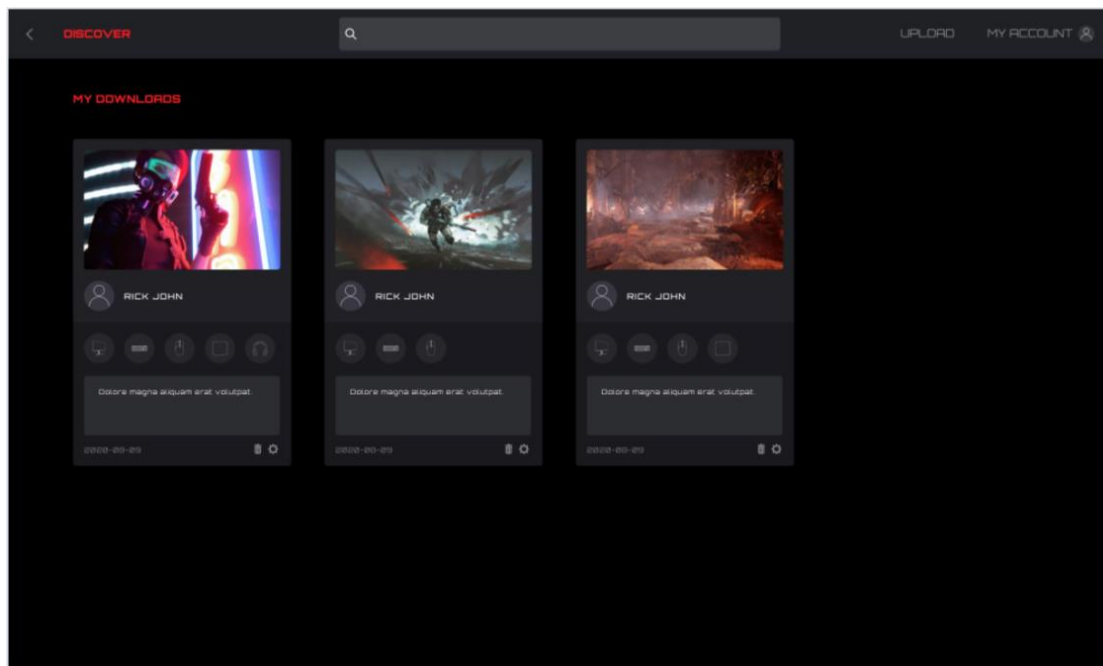
- Cover
- Publisher's nickname and avatar
- Profile title and introduction
- Adaptation equipment and model
- Public/Private
- Release time
- Download (configure)/delete button

Click the **Delete** button to delete the Profile file from the discover screen.

Click the **Upload** button to upload a profile.



9.13.2 My downloads

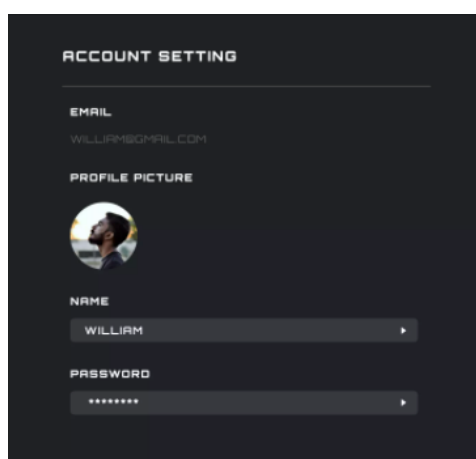


Display the profile information and download time of profiles that have been downloaded and saved locally.

Click the **Configuration** button to enter the configuration interface.

Click the **Delete** button to delete the profile file locally and return to the Profile list.

9.13.3 ACCOUNT SETTING

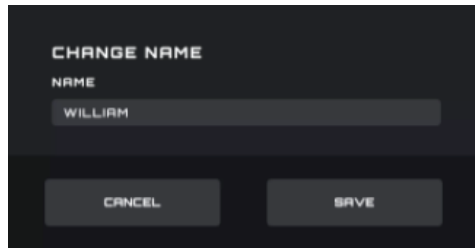


The Email address cannot be changed, changing the email address will create a new account.

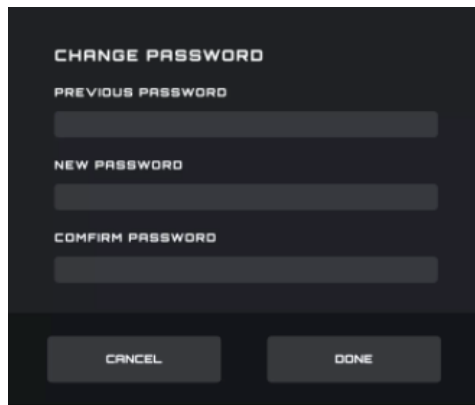
- PROFILE PICTURE

Click to open a **File Explorer** dialog box to change the picture.

- CHANGE NAME



- CHANGE PASSWORD



The old password input box always obscures the password field.

New password and new password confirmation input field always obscures the password field.

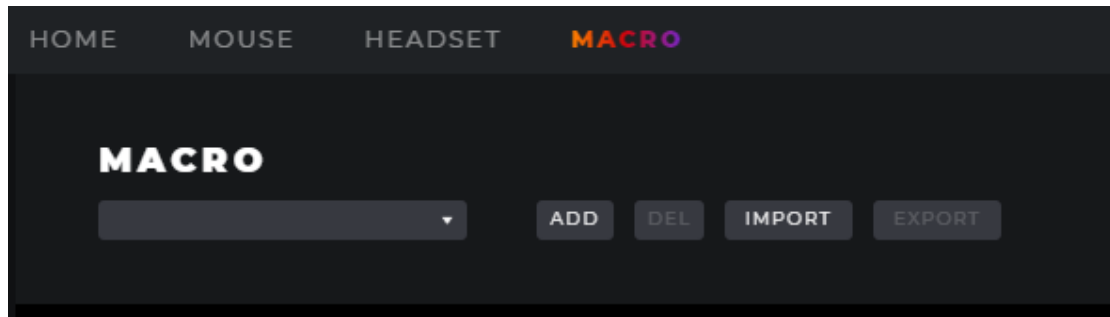
Click the **Cancel** button to cancel the modification.

Click the **Done** button to confirm the modification. After verification, the new password takes effect, and the login interface is opened to log into.

- BACK

Click the **Back** button to return to the previous interface.

10. Macro



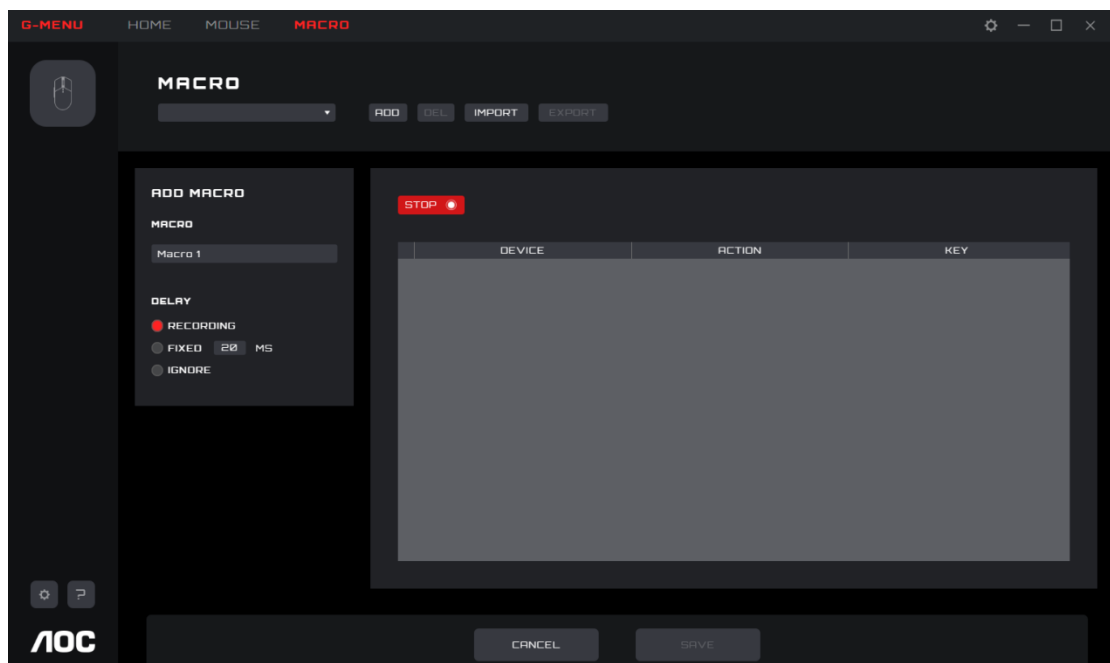
Create and edit macros from the Macro interface.

10.1 EDIT

Select a macro from the drop-down menu.

10.2 ADD

Click the **ADD** button to display the macro editing interface.



1) MACRO NAME

Enter a name into the text box. 50 characters max.

2) DELAY

Select the delay time for running the macro.

- **Recording:** Follow the delays between actions exactly as recorded. Default.
- **Fixed:** The trigger time between each action is fixed. Default, 20ms.
- **Ignore:** Do each action in order, without delay.

3) START

Click the **Start** button to begin recording a macro.

If a macro exists, click the **Clear** button to remove the actions and begin a new recording.

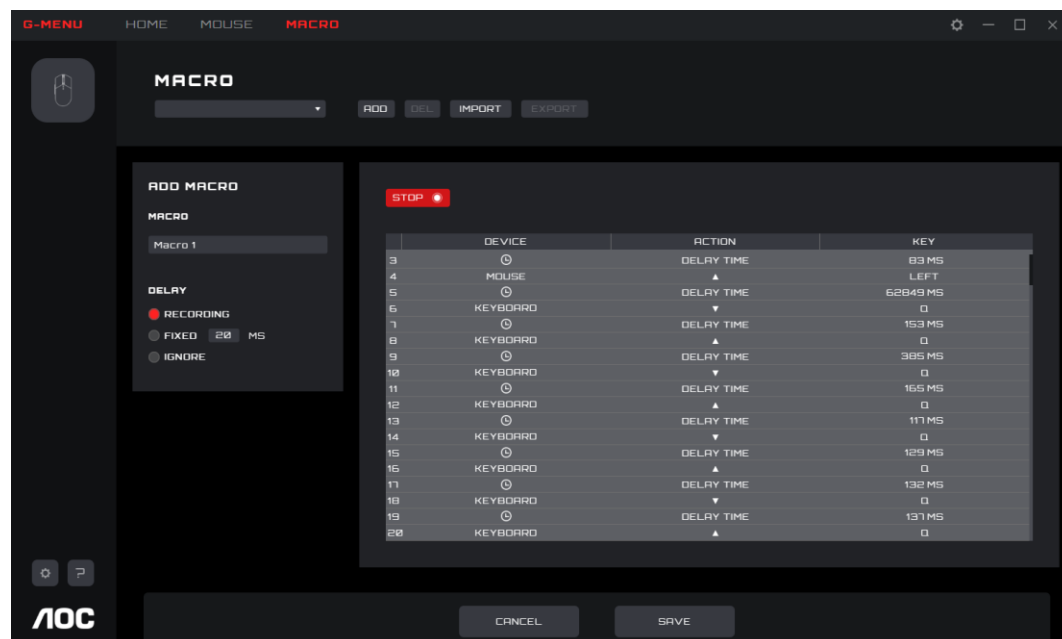
While recording, the **Start** button becomes a **Stop** button. During a recording, the macro setting options are disabled and only the keypress record box will be updated.

Click the **Stop** button to finish recording.

4) Keypress record

Provides a real-time recording of all device keypress operations.

- **Device:** Show which device initiated the event, or the delay between events.
- **Action:** Registers Key down, key up and delay time events.
- **Key:** Which key was pressed or the duration of the delay time between events.



5) SAVE

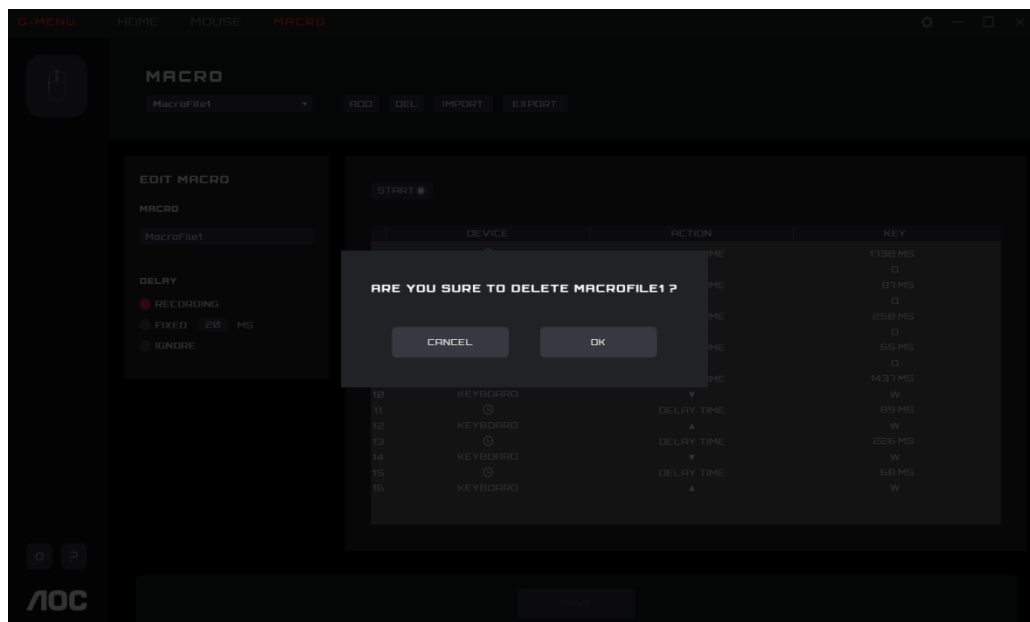
Click the **Save** button to save the macro, making the macro editable.

6) CANCEL

Click the **Cancel** button to cancel the macro creation process.

10.3 DEL

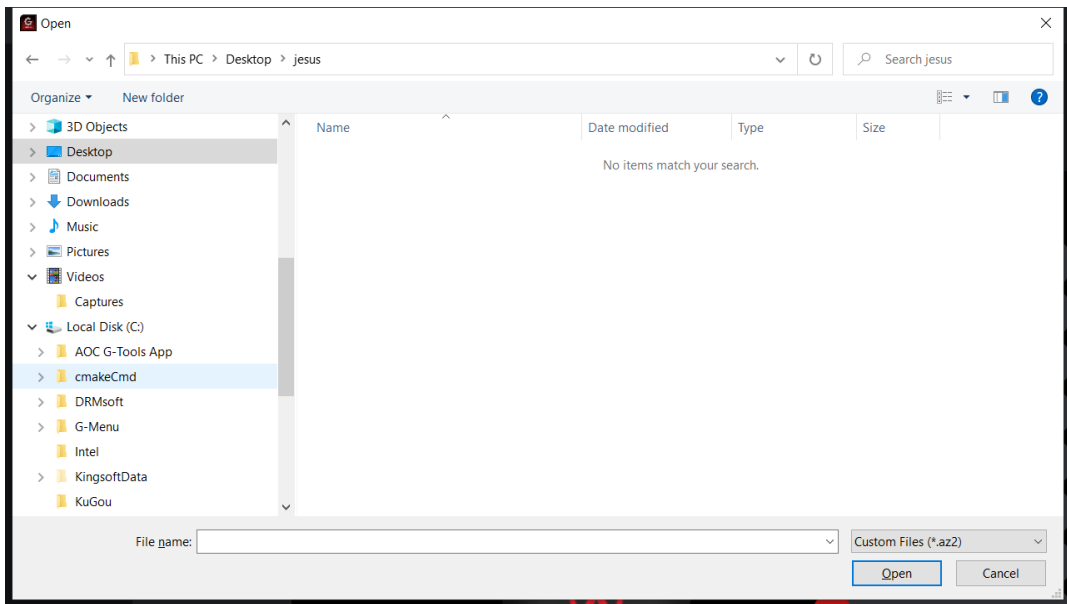
Click the **DEL** button to delete the macro. Then confirm or cancel the deletion.



10.4 Import

Click the **Import** button to open a **File Explorer** dialog box.

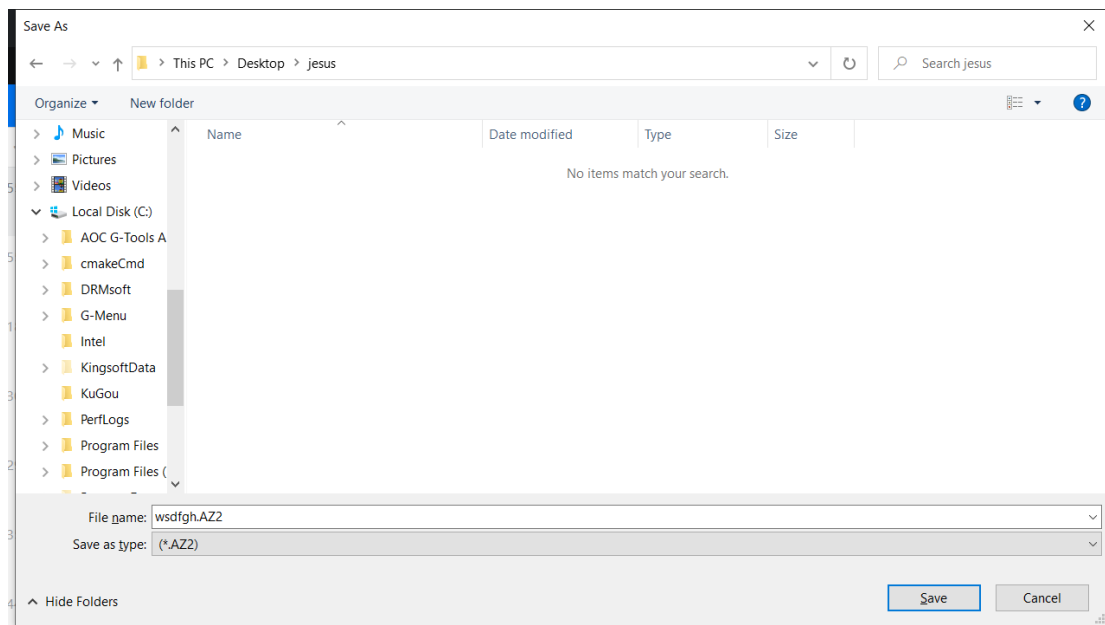
- Find the macro file to import.
- Click the **Open** button to import the macro file.
- Click the **Cancel** button to cancel the import, and close the dialog box.



10.5 Export

Click the **Export** button to open a **Save As** dialog box, the file name defaults to the current macro name.

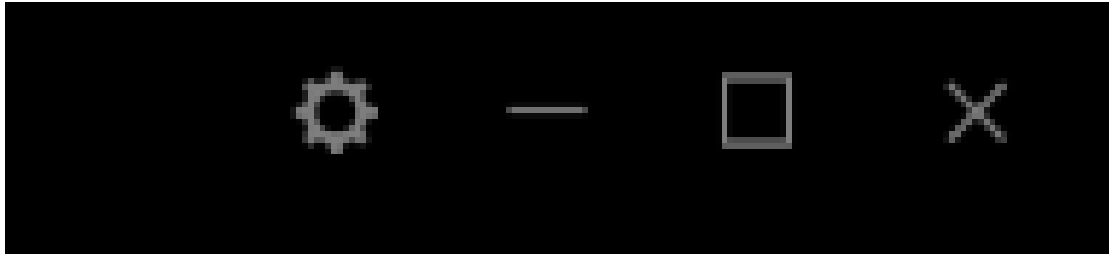
Navigate to your desired export folder.



Click the **Save** button to export the macro file.

Click the **Cancel** button to cancel the export, and close the dialog box.

11. Language

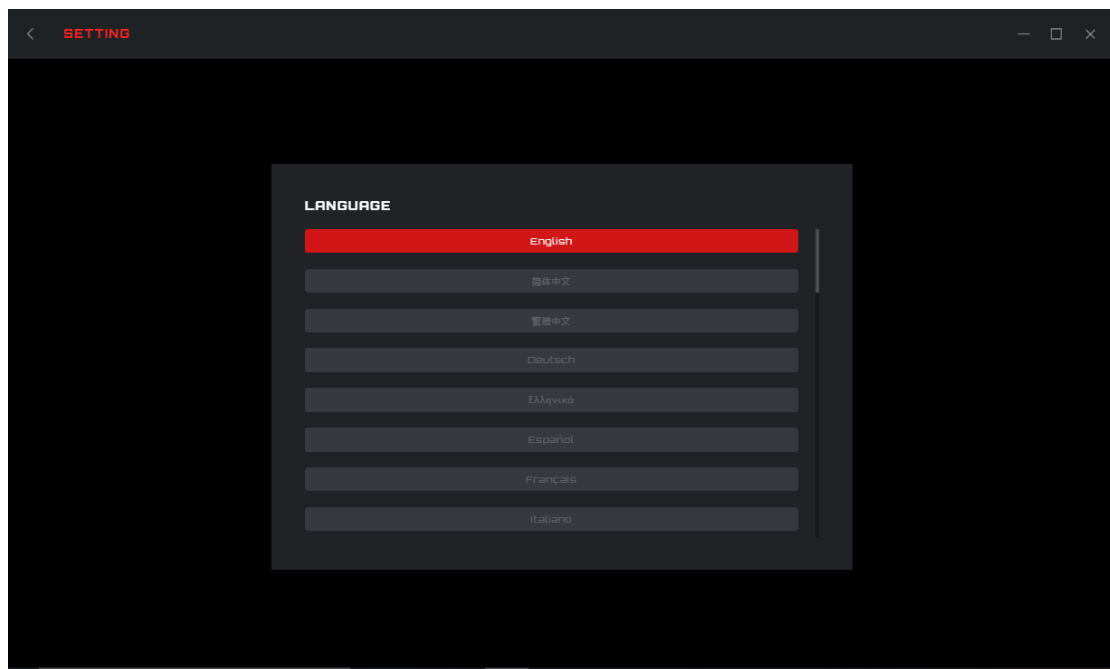


Change the language for G-Menu.

- Switch Language

Displays all currently supported languages, among which the currently used language is highlighted.

Click the appropriate language button to switch languages immediately.



- Back

Click the < **(Back)** button to return to the previous interface.

12. Safety Guide and Maintenance

Important

For your safety, please carefully read the following guidelines for the device:

1. Do not operate the device under abnormal conditions.
2. Avoid looking directly at the device's tracking beam or pointing the beam at anyone's eyes. Please note that the tracking beam is not visible to the naked eye and is set as always-on.
3. Do not disassemble the device (this will void the warranty) and do not attempt to operate under abnormal current loads.
4. Keep the device away from liquid or moisture. Operate the device only within the indicated temperature range: 0 ° C (32 ° F) to 40 ° C (104 ° F). If the temperature of the device is too high, unplug the device to lower the temperature.
5. If the RGB lighting is not running properly, or the device is not functioning, or if there is an abnormal thermal situation, troubleshoot the device by unplugging the device and plugging the device back in .
6. If the troubleshooting process does not resolve the issue, unplug the device and visit www.aoc.com for support. Do not attempt to repair the device yourself.

Safety

Federal Communication Commission Interference Statement

This device complies with Part 15 of the FCC Rules. Operation is subject to the following two conditions:

- (1) This device may not cause harmful interference.
- (2) This device must accept any interference received, including interference that may cause undesired operation.

Note:

This device has been tested and found to comply with the limits for a Class B digital device, pursuant to Part 15 of the FCC Rules. These limits are designed to provide reasonable protection against harmful interference in a residential installation. This device generates, uses, and can radiate radio frequency energy and, if not installed and used in accordance with the instructions, may cause harmful interference to radio communications. However, there is no guarantee that interference will not occur in a particular installation. If this device does cause harmful interference to radio or television reception, which can be determined by turning the equipment off and on, the user is encouraged to try to correct the interference by one or more of the following measures:

—Reorient or relocate the receiving antenna.

- Increase the separation between the device and receiver.
- Connect the device into an outlet on a circuit different from that to which the receiver is connected.
- Consult the dealer or an experienced radio/TV technician for help.