

1.0 Reference and Address			
Report Number	130400027SHA-005	Original Issued: 15-Apr-2013	Revised: None
Standard(s)	ENERGY STAR® Program Requirements for Displays Version 6.0		
Applicant	Top Victory Electronics (Taiwan) Co.,Ltd.	Manufacturer	TPV Electronics(Fujian) Co., Ltd
Address	10F.,No.230,Liancheng Rd. Zhonghe City. Taipei Country 23553	Address	Shangzheng Yuanhong Road, Fuqing City,Fujian
Country	Taiwan	Country	China
Contact	David.Cheng	Contact	Winter.Feng
Phone	+886-2-82261668-2375	Phone	+86-591-85285555
FAX	+886-2-82261668-2375	FAX	+86-591-85285447
Email	David.cheng@tpv-tech.com	Email	winter.feng@tpv-tech.com
Manufacturer 2	TPV Display Technology (Beihai) Co.,Ltd	Manufacturer 3	TPV Technology(Beijing)Co.,Ltd.
Address	China Electronic Beihai Industry Park,Northeast of the Crossing between Taiwan Road and Jilin Road Beihai City,Guangxi	Address	No.10 Jiuxianqiao Rd. Chao Yang District Beijing
Country	China	Country	China
Contact	Yin Tao	Contact	Jenny Che
Phone	18277949678	Phone	010-64326699-8601
FAX	86-779-2232270	FAX	86-10-64371452
Email	yin.tao@tpv-tech.com	Email	jenny.che@tpv-tech.com
Manufacturer 4	L&T Display Technology (Fujian) Ltd.	Manufacturer 5	TPV Display Technology(Wuhan)Co.,Ltd
Address	Optoelectronic Park, Rongqiao Economic and Technological Development Zone,Fuqing City,Fujian	Address	Unique No.11 Zhuankou Development District of Economic Technological Development Zone Wuhan
Country	China	Country	China
Contact	Shan Xu	Contact	Zhe.Zhou
Phone	86(591)8651-5556	Phone	86(27)-6884 3822
FAX	86(591)8651-5556	FAX	86(27)-6884 3822
Email	shan.xu@lntdisplayfj.com	Email	zhe.zhou@tpv-tech.com
Manufacturer 6	TPV Display Technology (China) Co., Ltd.		
Address	No.106 Jinghai 3 Rd., BDA, Beijing City		
Country	China		
Contact	Nancy.Shang		
Phone	86(10)64326699-8312		
FAX			
Email	lijia.shang@tpv-tech.com		

2.0 Product Description			
Product	Display (LCD Monitor)		
Brand name	AOC		
Description	The product covered by this report is a LCD Display (LED backlighting)		
Models	D2757PH(270LM00005);I2757FH(270LM00005);I2757FM(270LM00005);I2757F(270LM00005)		
Model Similarity	Model Number:270LM00005 Model Name:D2757PH;I2757FH;I2757FM;I2757F		
Ratings	12Vdc,3.75A		
Other Ratings	Please check section 4.0 for detail.		
Date available	03/12/2013	Market availability	Yes
		Last Mfg date	NA
Major Markets	Australia,New Zealand,Canada,Europe,Japan,Switzerland,Taiwan,United States		
Trans Type	Initial Certification: Model Meets ENERGY STAR Requirements		
Notes	NA		
Additional model details (optional)	Model Name or Number	Identifying Information	
	D2757PH	Different model names are the same except for different sales markets and colors.	
	I2757FH		
	I2757FM		
	I2757F		

3.0 Product Photographs

Photo 1 - External view (Front)

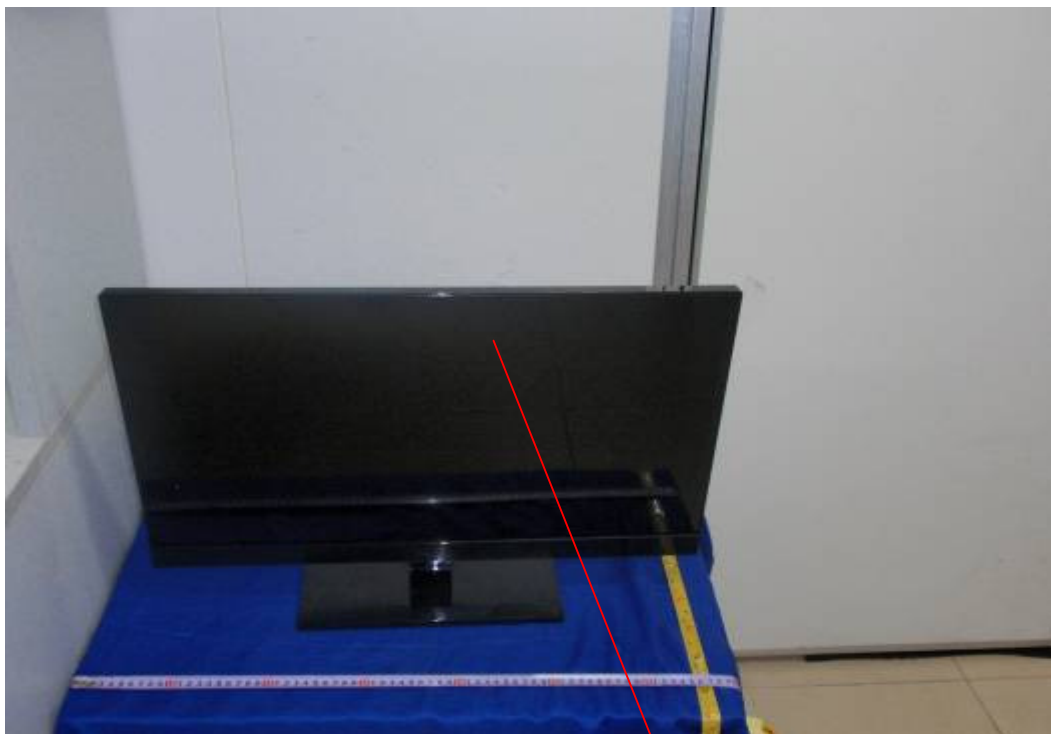
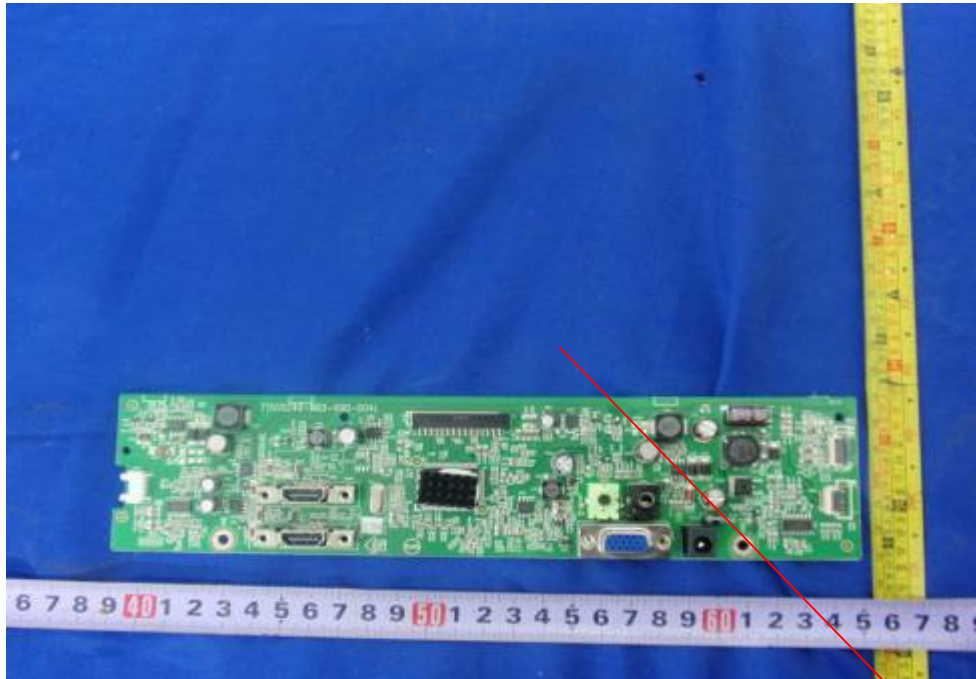


Photo 2 - External view (Back)



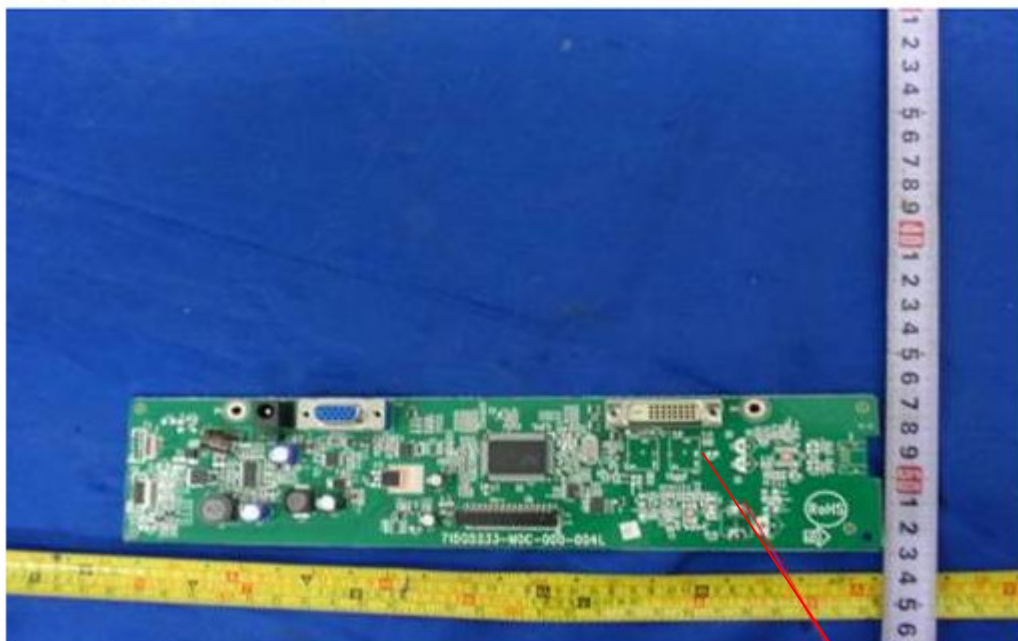
3.0 Product Photographs

Photo 3 - Main board



2

Photo 4 - Main board



3

3.0 Product Photographs

Photo 5 - Main board



4

Photo 6- Power adaptor



5

3.0 Product Photographs

Photo 7- Power adapter



6

4.0 Critical Components						
Photo #	Item no. ¹	Name	Manufacturer/ trademark ²	Type / model ²	Technical data and securement means	Mark(s) of conformity ³
1	1	LCD panel	L&T	LM270WF5	27 inch TFT type, LED backlighting	NR
3,4,5	2,3,4	Main Board	TPV	715G5240	I/P:12Vdc/3.75A test model is 715G5240	NR
				715G5233		
				715G5603		
6,7	5,6	Power Adapter	TPV	ADPC1245	I/P:AC100-240V,50~60Hz,1.5A; O/P:12Vdc/3.75A. Energy Efficiency:LEVEL V Test model is TPV/ADPC1245	NR
			HONOR	ADS65LSI-12-112045G		
NOTES:						
1) Not all item numbers are indicated (called out) in the photos, as their location is obvious. 2) "Various" means any type, from any manufacturer that complies with the "Technical data and securement means" and meets the "Mark(s) of conformity" can be used. 3) Indicates specific marks to be verified, which assures the agreed level of surveillance for the component. "NR" - indicates: a) Unlisted and only visual examination is necessary or b) marks are not required to be verified.						

5.0 Critical Unlisted CEC Components

Periodic Evaluation of Critical Unlisted Components by the Intertek Component Evaluation Centers (CEC) is not required under the INTERTEK ENERGY STAR Program.

6.0 Critical Features

Critical Features/Components - An essential part, material, subassembly, system, software, or accessory of a product that has a direct bearing on the product's conformance to applicable requirements of the ENERGY STAR® Program Requirements.

Listed Component - A component part, which has been previously Listed or Certified by an accredited Certification Organization with no restrictions and is used in the intended application within its ratings.

Recognized Component - A component part, which has been previously evaluated by an accredited certification body with restrictions and must be evaluated as part of the basic product considering the restrictions as specified by the Conditions of Acceptability.

Unlisted Component - A part that has not been previously evaluated to the appropriate designated component standard. It may also be a Listed or Recognized component that is being used outside of its evaluated Listing or component recognition.

Construction Details - For specific construction details, reference should be made to the photographs and descriptions. All dimensions are approximate unless specified as exact or within a tolerance. In addition to the specific construction details described in this Report, the following general requirements also apply.

1. Product Safety Compliance - NA

2. EMI Compliance - NA

3. Schematics - NA

4. Installation, Operating and Safety Instructions - Instructions for installation and use of this product are provided by the manufacturer. Refer to Illustration No.1.for details.

5. Package Markings - NA


6. Warranty Information - NA


7. Marking Label - Refer to Illustration No.2.for details.


7.0 Illustrations


Illustration 1 - Installation, Operating and Safety Instructions


Power


 The monitor should be operated only from the type of power source indicated on the label. If you are not sure of the type of power supplied to your home, consult your dealer or local power company.


 The monitor is equipped with a three-pronged grounded plug, a plug with a third (grounding) pin. This plug will fit only into a grounded power outlet as a safety feature. If your outlet does not accommodate the three-wire plug, have an electrician install the correct outlet, or use an adapter to ground the appliance safely. Do not defeat the safety purpose of the grounded plug.

 Unplug the unit during a lightning storm or when it will not be used for long periods of time. This will protect the monitor from damage due to power surges.

 Do not overload power strips and extension cords. Overloading can result in fire or electric shock.

 To ensure satisfactory operation, use the monitor only with UL listed computers which have appropriate configured receptacles marked between 100 - 240V ~, Min. 5A

 The wall socket shall be installed near the equipment and shall be easily accessible.

 For use only with the attached power adapter (Output 12Vdc) which have UL,CSA listed license (Only for monitors with power adapter).

Manufacturers:

1) TPV ELECTRONICS(FUJIAN) CO., LTD model : ADPC1245

7.0 Illustrations

Installation

⚠ Do not place the monitor on an unstable cart, stand, tripod, bracket, or table. If the monitor falls, it can injure a person and cause serious damage to this product. Use only a cart, stand, tripod, bracket, or table recommended by the manufacturer or sold with this product. Follow the manufacturer's instructions when installing the product and use mounting accessories recommended by the manufacturer. A product and cart combination should be moved with care.

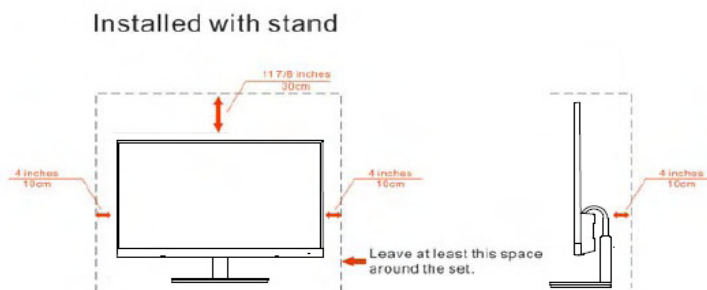
⚠ Never push any object into the slot on the monitor cabinet. It could damage circuit parts causing a fire or electric shock. Never spill liquids on the monitor.

⚠ Do not place the front of the product on the floor.

⚠ If you mount the monitor on a wall or shelf, use a mounting kit approved by the manufacturer and follow the kit instructions.

⚠ Leave some space around the monitor as shown below. Otherwise, air-circulation may be inadequate hence overheating may cause a fire or damage to the monitor.

See below the recommended ventilation areas around the monitor when the monitor is installed on the stand:



7.0 Illustrations

Illustration 2 -Marking Label

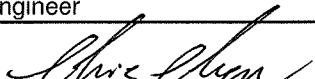



8.0 Test Summary			
Evaluation Period	04/15/2012~04/15/2012		Project No. 130400027SHA
Sample Rec. Date	1-Apr-2013	Condition Prototype	Sample ID. 0130401-69-005
Test Location	Intertek Testing Services Shanghai Limited. EPA ID(1105997) Building No.86, 1198 Qinzhou Road (North), Shanghai 200233, China		
Test Procedure	Testing Lab	Test type	Qualification
Determination of the result includes consideration of measurement uncertainty from the test equipment and methods. The product was tested as indicated below with results in conformance to the relevant test criteria.			
The following requirements were evaluated:			
Required Submittal Information			Submittal Data
Model Name and/or Number tested			I2757FM (270LM00005)
Date tested			04/15/2013
Serial number of Unit tested			EPAMNT(FJ)- HFCJHJ28CSA1 DN-120416
ENERGY_STAR_Specification_Version*			6.0
Product_Type*			Monitor
Other_Product_Type			NA
Display_Type*			Other
Other_Display_Type			TFT LCD
Display_Backlight_Technology*			LED
Other_Display_Backlight_Technology			NA
Display_Contrast_Ratio*			1000:1
Viewable_Screen_Height_in*			13.2
Viewable_Screen_Width_in*			23.6
Diagonal_Viewable_Screen_Size_in*			27
Viewable_Screen_Area_sq_in*			311.7
Aspect_Ratio*			1.78
Native_Resolution_Vertical_pixels*			1080
Native_Resolution_Horizontal_pixels*			1920
Total_Native_Resolution_megapixels*			2.074
Maximum_Resolution_Vertical*			1080
Maximum_Resolution_Horizontal*			1920
Native_Pixel_Density_Dp_pixels_sq_in*			6654
Screen_Refresh_Rate_Hz*			60
Horizontal_Viewing_Angle_degrees*			170
Vertical_Viewing_Angle_degrees*			160
Color_Gamut*			72% of NTSC
Is_Color_Gamut_at_least_sRGB*			Yes
Is_This_Model_an_Enhanced_Performance_Display			No
Reported_Contrast_Ratio_at_85_Left_Horizontal_Viewing_Angle			NA
Reported_Contrast_Ratio_at_85_Right_Horizontal_Viewing_Angle			NA
Is_This_Model_Shipped_With_an_External_Power_Supply_EPS*			Yes
Is_Model_Sold_Through_Enterprise_Channels*			Yes
Other_Available_Interfaces			NA
Other_Data_Network_Peripheral_Ports			NA
Other_Model_Options			NA
Interface*			HDMI
Other_Interface			DVI,VGA
Data_Network_Connection*			None
Other_Data_Network_Connected			NA
Power_Source*			Ac Wall Outlet
Other_Power_Source			NA
VESA_FPDM2_Test_Pattern_Used*			No
Recommended_Image_Size_mm*			597.9x336.3
Display_Has_an_Integrated_Television_Tuner*			No

8.0 Test Summary	
Other Mechanism for Automatically Entering Sleep or Off Mode	NA
Default Delay Time to Sleep min	
Does Model Have a Forced Menu at Initial Start up*	No
Is Automatic Brightness Control ABC Present*	No
Is Automatic Brightness Control ABC Enabled by Default	No
Automatic Brightness Control ABC Disabled Brightness Mode	
Minimum Luminance cd m ² *	23
Maximum Measured Luminance cd m ² *	289
Maximum Reported Luminance cd m ² *	300
As shipped Luminance cd m ²	215.3
As tested Luminance cd m ² *	200
On Mode Power at 10 Lux at 115 Volts W	
On Mode Power at 300 Lux at 115 Volts W	
Measured On Mode Power at 115 Volts W	25.95
Reported On Mode Power at 115 Volts W	
Measured Sleep Mode Power at 115 Volts W	0.47
Reported Sleep Mode Power at 115 Volts W	
Measured Non Connected Sleep Mode Power at 115 Volts W	
Measured Off Mode Power at 115 Volts W	0.39
Reported Off Mode Power at 115 Volts W	
On Mode Power at 10 Lux at 230 Volts W	
On Mode Power at 300 Lux at 230 Volts W	
Measured On Mode Power at 230 Volts W	25.85
Measured Sleep Mode Power at 230 Volts W	0.49
Measured Non Connected Sleep Mode Power at 230 Volts W	
Measured Off Mode Power at 230 Volts W	0.4
On Mode Limit Pon_max W*	29.1
Sleep Mode Limit Psleep_ap or Psleep_max W*	0.5
Off Mode Limit Poff_max W*	0.5
True Power Factor PF During On Mode Testing*	0.4
Low Voltage Dc Source Power PI W	
Adder for an Enhanced Performance Display W	0
Adder for Automatic Brightness Control W	0
Number of Sleep Modes in Addition to Default Sleep Mode*	0
Signal Technology*	Analog,Digital
Available Interfaces*	DVI,VGA,HDMI
Data Network Peripheral Ports*	None
Model Options*	Built-In Speakers
	Display Power Management Signaling
Mechanism for Automatically Entering Sleep or Off Mode*	

8.1 Signatures

A representative sample of the product covered by this report has been evaluated and found to comply with the applicable requirements of the standards indicated in Section 1.0.

Completed by:	Chris Chen	Reviewed by:	Jarree Jiang
Title:	Engineer	Title:	Engineer
Signature:		Signature:	

9.0 Correlation Page For Multiple Listings

The following products, which are identical to those identified in this report except for model number and Company name.

BASIC LISTEE	Top Victory Electronics (Taiwan) Co.,Ltd.		
Address	10F.,No.230,Liancheng Rd. Zhonghe City. Taipei Country 23553		
Country	Taiwan	EPA ID	1065104
Product	Display (LCD Monitor)		

MULTIPLE LISTEE 1	None		
Address			
Country		EPA ID	
Contact			
Phone			
FAX			
Email			
Brand Name			
Trans Type			
Notes			

ASSOCIATED MANUFACTURER			
Address			
Country			

MULTIPLE LISTEE 1 MODELS		BASIC LISTEE MODELS
Additional model details (Optional)	Model Name or Number	Identifying Information

MULTIPLE LISTEE 2	None		
Address			
Country		EPA ID	
Contact			
Phone			
FAX			
Email			
Brand Name			
Trans Type			
Notes			

ASSOCIATED MANUFACTURER			
Address			
Country			

MULTIPLE LISTEE 2 MODELS		BASIC LISTEE MODELS
Additional model details (Optional)	Model Name or Number	Identifying Information

10.0 General Information

The Applicant has agreed to produce products in accordance with the requirements of this report and to maintain compliance with all ENERGY STAR Product Specification requirements.

Changes to Product Design / Alternate Components

As part of this agreement, the Applicant also has agreed to notify Intertek and to request authorization prior to making any changes to the product (including but not limited to using alternate parts, components or materials) which may effect compliance with the ENERGY STAR Product Specification. Those parts, components or materials identified as critical have been listed in Section 4.0 of this report.

Product Surveillance

Under this Program, market surveillance is conducted on an annual basis. For each Product Type defined in the EPA ENERGY STAR Program, Intertek will select 10% of those certified products for Verification Testing in accordance with the requirements of the EPA ENERGY STAR Product Specification.

The primary source for products under Verification Testing will be the retail market. Applicants whose products are selected for Verification Testing are required to provide a list of locations where the product might be obtained. The Applicant is responsible for the cost of procurement and the Verification Tests. Should products not be readily available on the retail market, the Applicant is required to provide access to distribution warehouses to allow selection of those products. Should the product not be available on the retail market or if procurement from the retail market is not feasible, then alternate arrangements for Verification Testing will be made by the Intertek

As a general rule under the Verification Testing requirements, the products must achieve energy values within 5% of the required Tier Limit.

Compliance with ENERGY STAR Product Specifications under Verification Testing

Products found non-compliant with ENERGY STAR Product Specification under Verification Testing, will be reported to the EPA within 48 hours and the product removed from the ENERGY STAR Program. If it is determined during Verification Testing that changes have been made to product design or critical components, the Certification Body may increase Verification Testing frequency of those products.

10.1 Evaluation of Unlisted Components

Because Unlisted Components are uncontrolled, and they do not fall under a third party follow up program, Intertek may require these components to be tested and/or evaluated at least once annually, more often for certain components, as part of the independent certification process. The Unlisted Components in Section 5.0 require testing and/or evaluation as indicated.

Note to Intertek Follow Up Inspector: The Component Evaluation Center, CEC, will notify you in writing when these components must be selected and sent to the CEC for re-evaluation

Ship the samples to:
Intertek Testing Services Shanghai Limited
ETL Component Evaluation Center
Building No. 86, 1198 Qinzhou Road (North)
Shanghai 200233, China

Attn: Ms. Dansy Xu

Sample Disposition: Due to the destructive nature of the testing, all samples will be discarded at the conclusion of testing unless, the manufacturer specifically requests the return of the samples. The request for return **must** accompany the initial component shipment.

11.0 Manufacturing and Production Tests

Manufacturing and Production tests are not required under the INTERTEK ENERGY STAR Program. However, Intertek encourages the use of such ongoing product testing to ensure compliance with the EPA ENERGY STAR Product Specifications.

