

## Suggest Tools

Here are some tools that can be used for the LCD monitor's service and repair.

### Philips-head Screwdriver

Use a Philips-head screwdriver to fasten/remove the K- or B-typed screws



P/N: N/A

### Gloves

To protect LCD Panel and your hand



P/N: (L) N/A (M) N/A

### C/D Disassembly Tool

Use C/D Disassembly Tool to open cosmetic cover and avoid scratch.



P/N: N/A

### Spacer Screwdriver

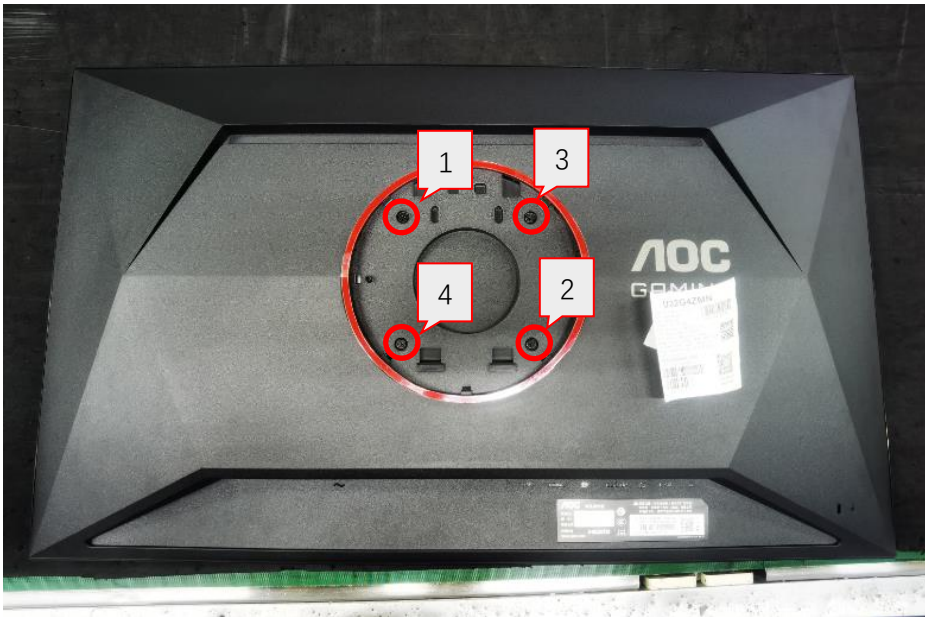
Use a spacer screwdriver to fasten/remove spacer screws or hex screws.



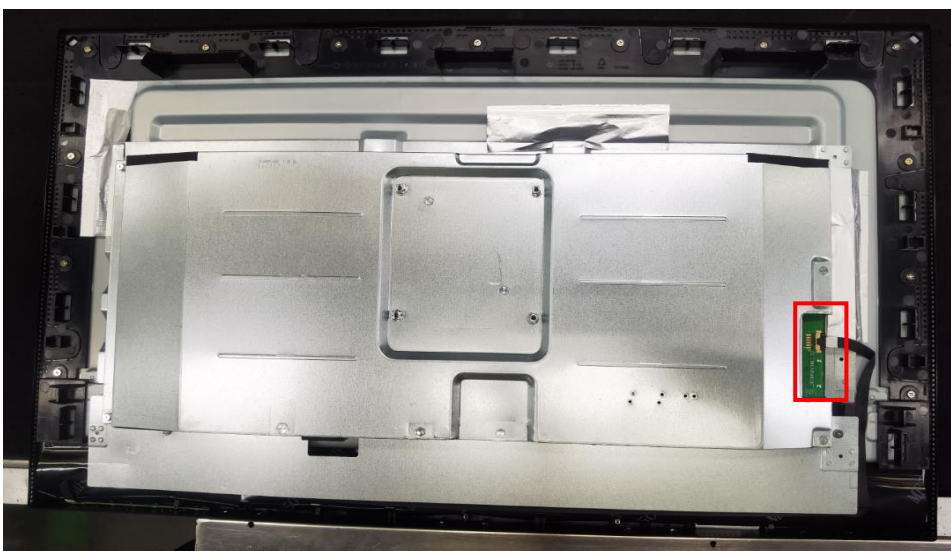
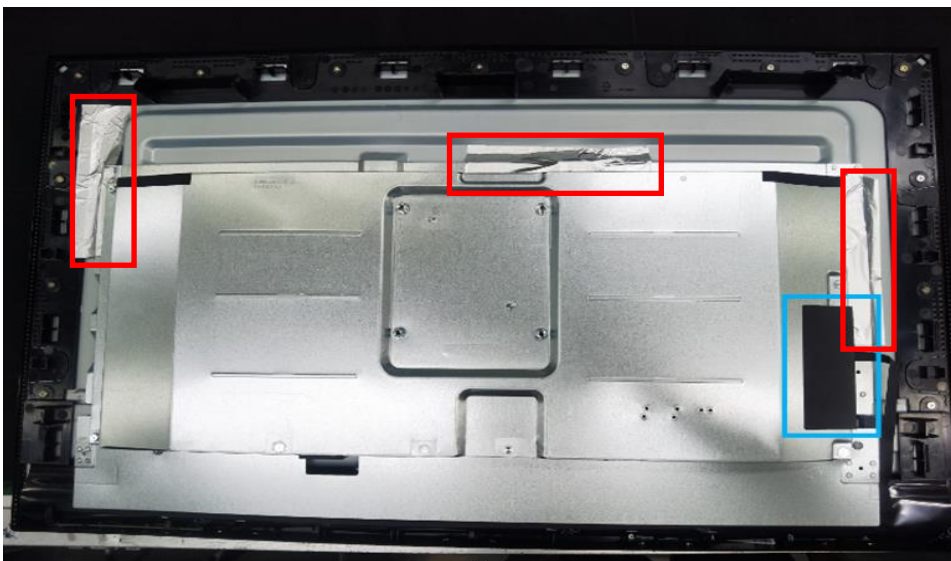
P/N: N/A

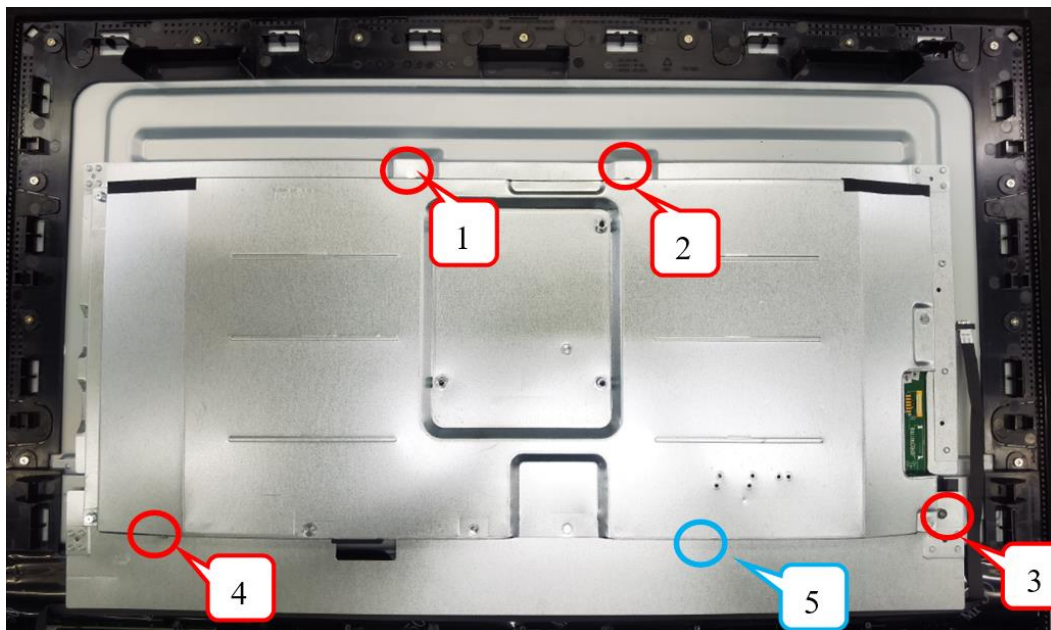
## Disassembly Instruction

1. Remove the screws to remove the rear cover

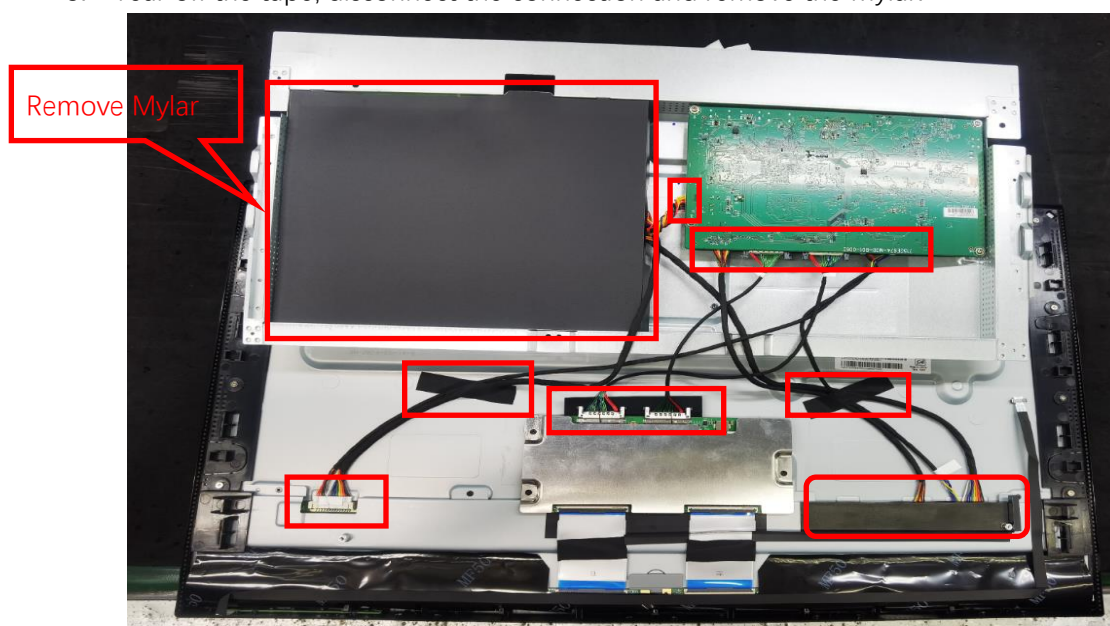


2. Tear off the tape, Disconnect the connection and remove the screws



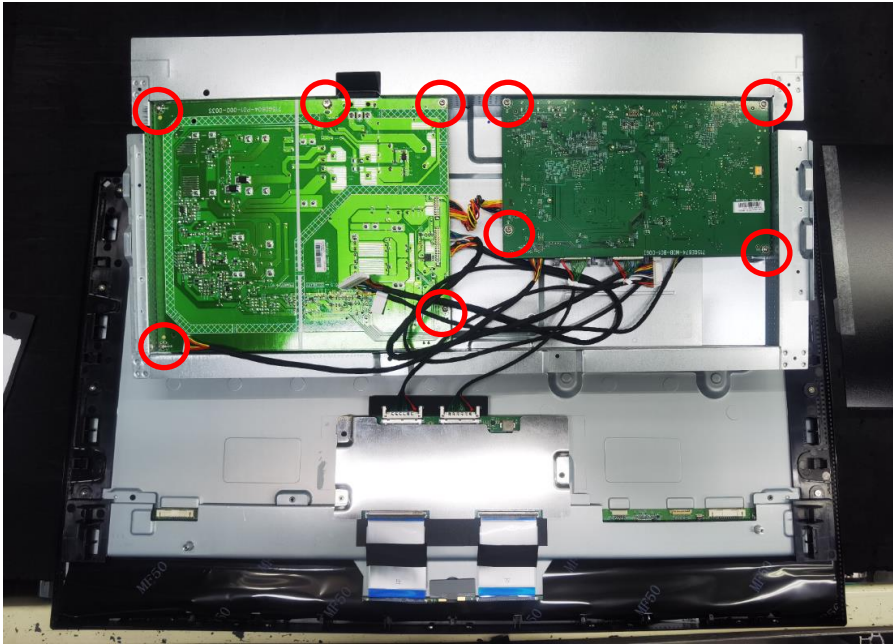


3. Tear off the tape, disconnect the connection and remove the Mylar.

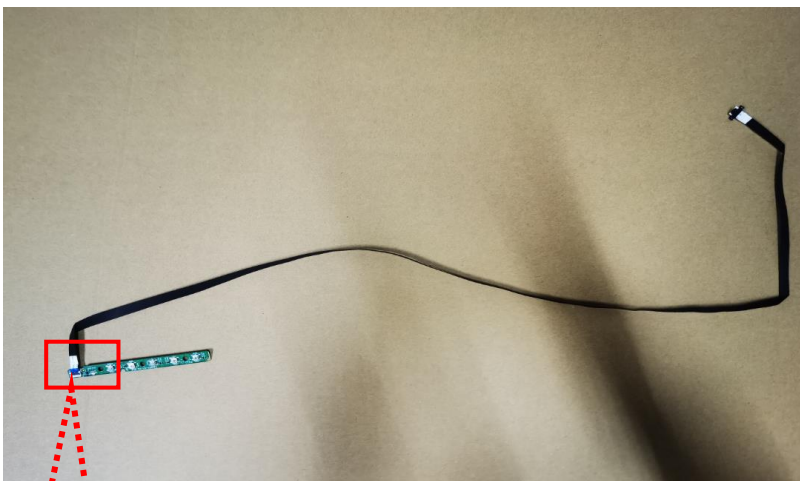
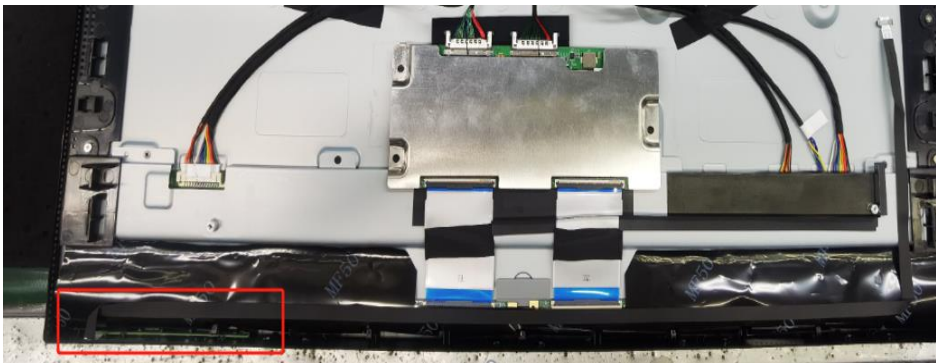




4. Remove the screws to get main board and power board.



5. Remove the key board.



6. Remove screws to get middle frame and panel.

