

AOC



**LCD Monitor
User Manual**

U32V5N

Safety	1
National Conventions	1
Power	2
Installation	3
Cleaning	4
Other	5
Setup	6
Contents in Box	6
Setup Stand & Base	7
Adjusting Viewing Angle	8
Connecting the Monitor	9
HDR	10
Wall Mounting	11
Adjusting	12
Hotkeys	12
OSD Setting	15
Luminance	16
Color Setup	16
Picture Boost	17
OSD Setup	18
PIP Setting	19
Game Setting	20
Extra	21
Exit	21
LED Indicator	22
Troubleshoot	24
Specification	25
Main specifications	25
Preset Display Modes	26
Pin Assignments	27
Plug and Play	28

Safety

National Conventions

The following subsections describe notational conventions used in this document.

Notes, Cautions, and Warnings

Throughout this guide, blocks of text may be accompanied by an icon and printed in bold type or in italic type. These blocks are notes, cautions, and warnings, and they are used as follows:



NOTE: A NOTE indicates important information that helps you make better use of your computer system.





CAUTION: A CAUTION indicates either potential damage to hardware or loss of data and tells you how to avoid the problem.




WARNING: A WARNING indicates the potential for bodily harm and tells you how to avoid the problem. Some warnings may appear in alternate formats and may be unaccompanied by an icon. In such cases, the specific presentation of the warning is mandated by regulatory authority.


Power

 The monitor should be operated only from the type of power source indicated on the label. If you are not sure of the type of power supplied to your home, consult your dealer or local power company.

 Unplug the unit during a lightning storm or when it will not be used for long periods of time. This will protect the monitor from damage due to power surges.

 Do not overload power strips and extension cords. Overloading can result in fire or electric shock.

 To ensure satisfactory operation, use the monitor only with UL listed computers which have appropriate configured receptacles marked between 100-240V AC, Min. 5A.

 The wall socket shall be installed near the equipment and shall be easily accessible.

Installation

! Do not place the monitor on an unstable cart, stand, tripod, bracket, or table. If the monitor falls, it can injure a person and cause serious damage to this product. Use only a cart, stand, tripod, bracket, or table recommended by the manufacturer or sold with this product. Follow the manufacturer's instructions when installing the product and use mounting accessories recommended by the manufacturer. A product and cart combination should be moved with care.

! Never push any object into the slot on the monitor cabinet. It could damage circuit parts causing a fire or electric shock. Never spill liquids on the monitor.

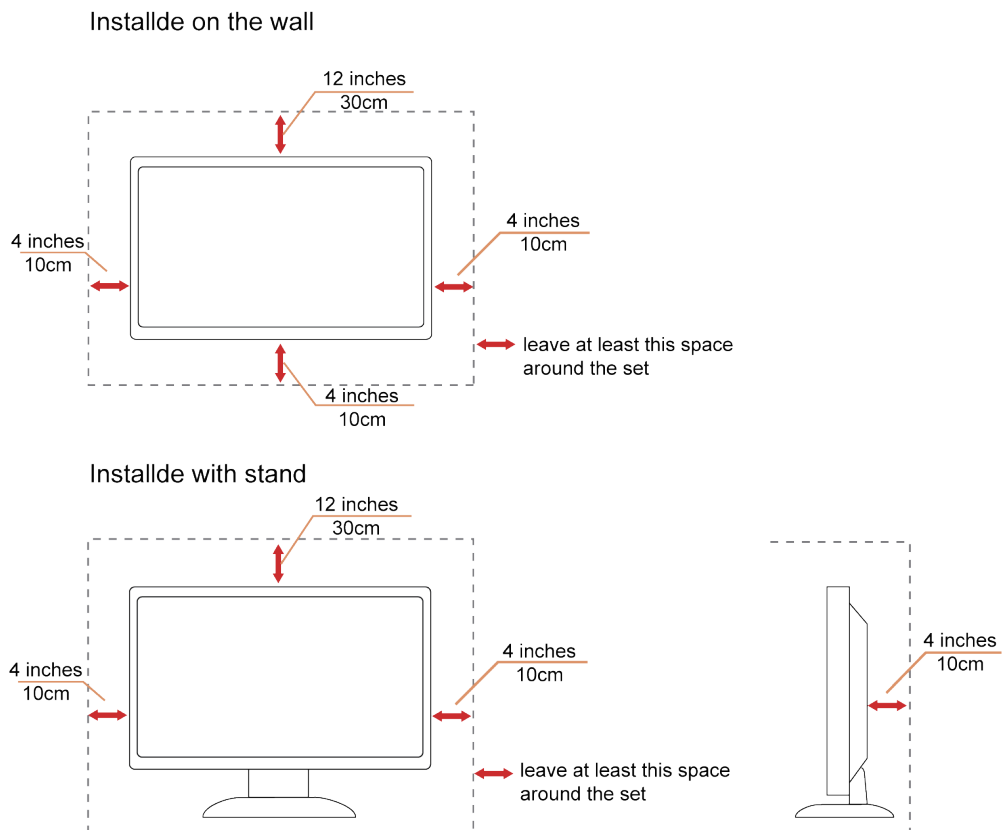
! Do not place the front of the product on the floor.

! If you mount the monitor on a wall or shelf, use a mounting kit approved by the manufacturer and follow the kit instructions.


! Leave some space around the monitor as shown below. Otherwise, air-circulation may be inadequate hence overheating may cause a fire or damage to the monitor.


! To avoid potential damage, for example the panel peeling from the bezel, ensure that the monitor does not tilt downward by more than -5 degrees. If the -5 degree downward tilt angle maximum is exceeded, the monitor damage will not be covered under warranty.


See below the recommended ventilation areas around the monitor when the monitor is installed on the wall or on the stand:



Cleaning


 Clean the cabinet regularly with cloth. You can use soft-detergent to wipe out the stain, instead of strong-detergent which will cauterize the product cabinet.


 When cleaning, make sure no detergent is leaked into the product. The cleaning cloth should not be too rough as it will scratch the screen surface.


 Please disconnect the power cord before cleaning the product.




Other

 If the product is emitting a strange smell, sound or smoke, disconnect the power plug IMMEDIATELY and contact a Service Center.

 Make sure that the ventilating openings are not blocked by a table or curtain.

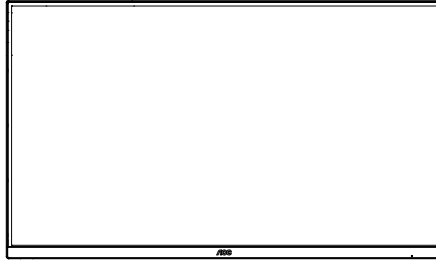
 Do not engage the LCD monitor in severe vibration or high impact conditions during operation.

 Do not knock or drop the monitor during operation or transportation.

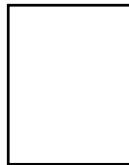
 For display with glossy bezel the user should consider the placement of the display as the bezel may cause disturbing reflections from surrounding light and bright surfaces.

Setup

Contents in Box



Monitor



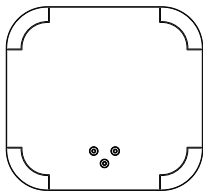
Quick Start Guide



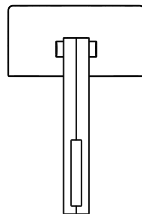
Warranty card



Important Information Manual



Base



Stand



Screwdriver



Power Cable



HDMI Cable



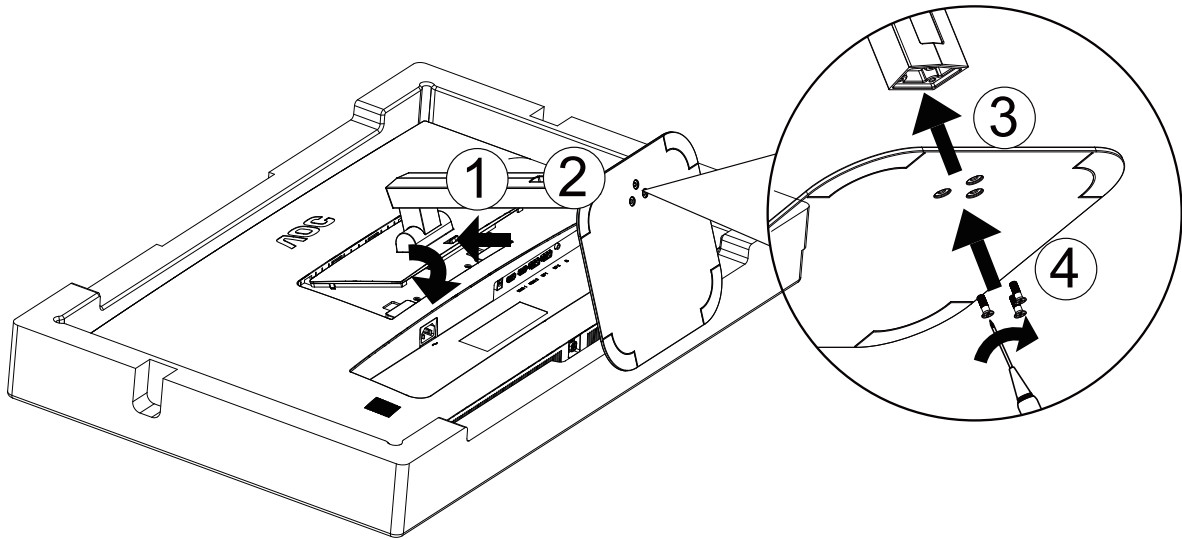
DP Cable

* Not all signal cables will be provided for all countries and regions. Please check with the local dealer or AOC branch office for confirmation.

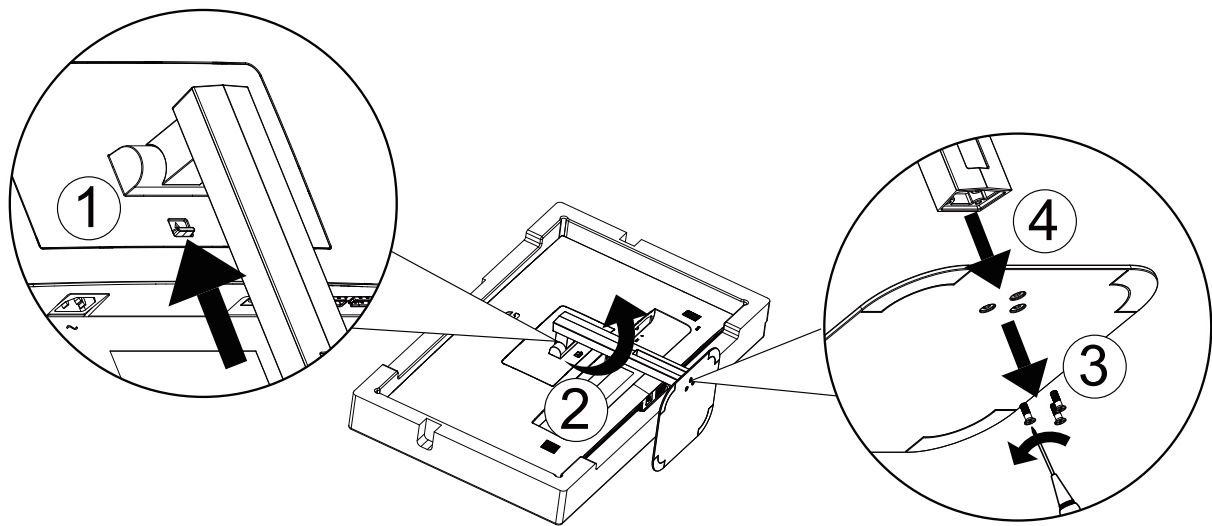
Setup Stand & Base

Please setup or remove the base following the steps as below.

Setup:



Remove:

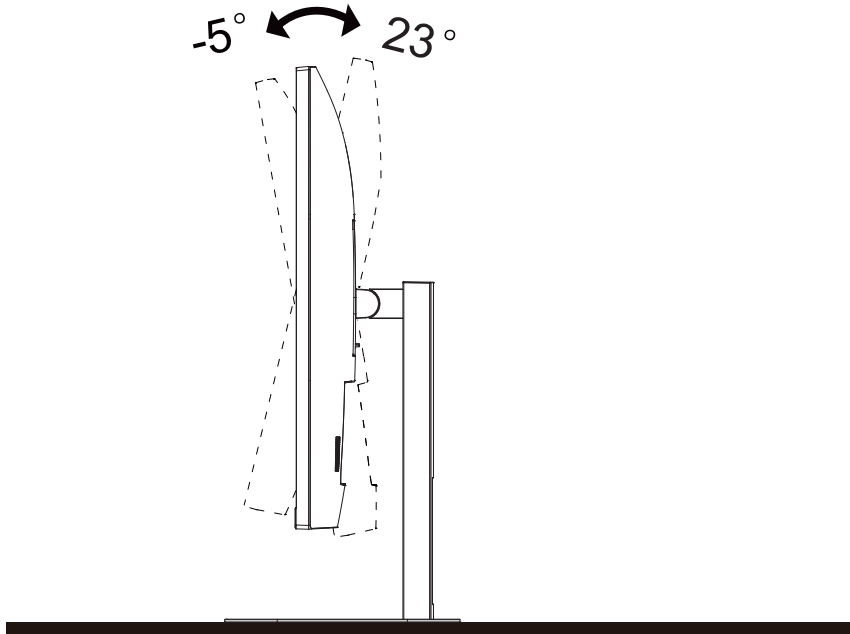


Adjusting Viewing Angle

For optimal viewing it is recommended to look at the full face of the monitor, then adjust the monitor's angle to your own preference.

Hold the stand so you will not topple the monitor when you change the monitor's angle.

You are able to adjust the monitor as below:



NOTE:

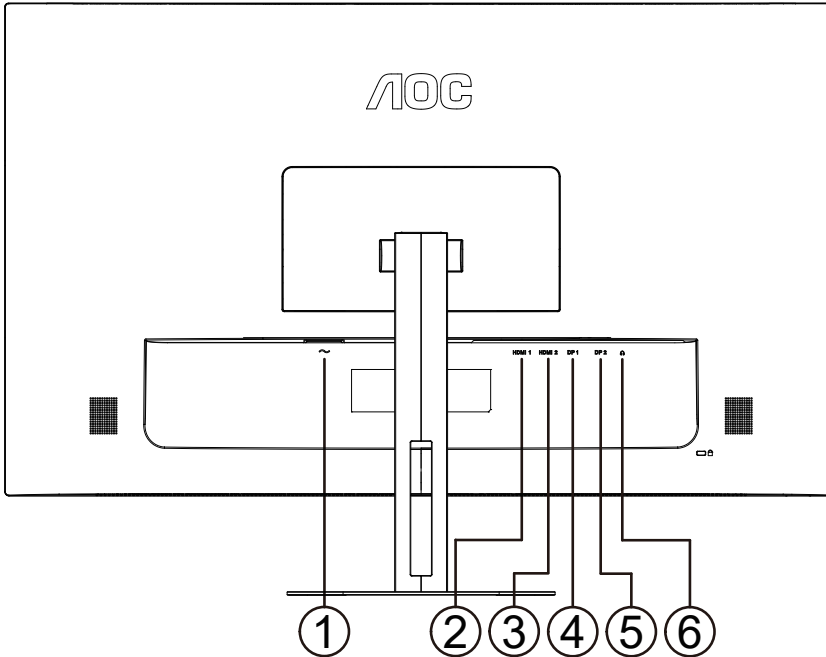
Do not touch the LCD screen when you change the angle. It may cause damage or break the LCD screen.

WARNING:

1. To avoid potential screen damage, such as panel peeling, ensure that the monitor does not tilt downward by more than -5 degrees.
2. Do not press the screen while adjusting the angle of the monitor. Grasp only the bezel.

Connecting the Monitor

Cable Connections In Back of Monitor and Computer:



1. Power
2. HDMI1
3. HDMI2
4. DP1
5. DP2
6. Audio out

Connect to PC

1. Connect the power cord to the back of the display firmly.
2. Turn off your computer and unplug its power cable.
3. Connect the display signal cable to the video connector on the back of your computer.
4. Plug the power cord of your computer and your display into a nearby outlet.
5. Turn on your computer and display.

If your monitor displays an image, installation is complete. If it does not display an image, please refer Troubleshooting.

To protect equipment, always turn off the PC and LCD monitor before connecting.

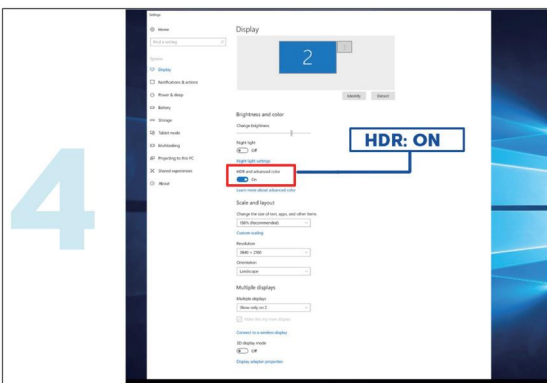
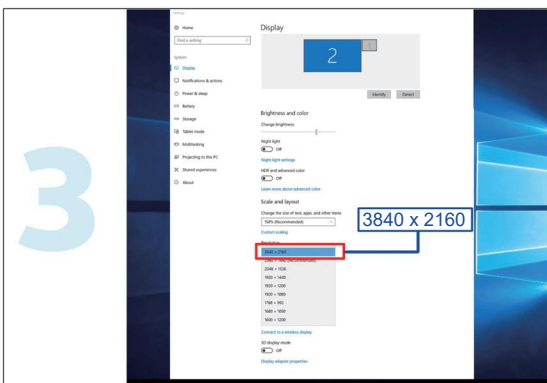
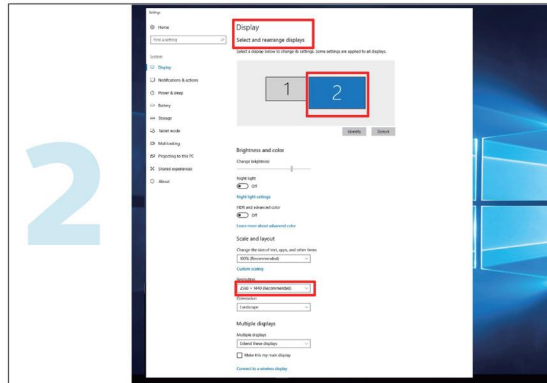
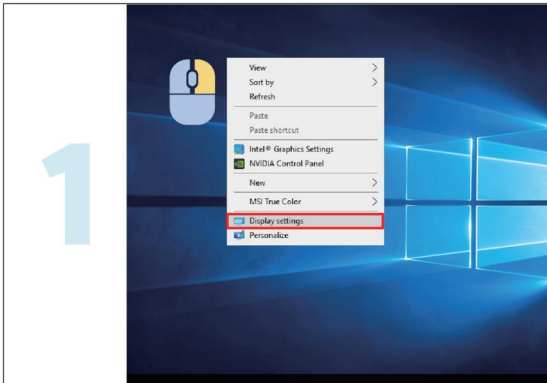
HDR

Compatible with HDR10 format input signals.

The monitor automatically enables HDR function, but you need to have a compatible player and content. To learn information and content about HDR compatible devices, please contact the device manufacturer and content provider. When you do not need to automatically start the HDR function, please select "disable" this function.

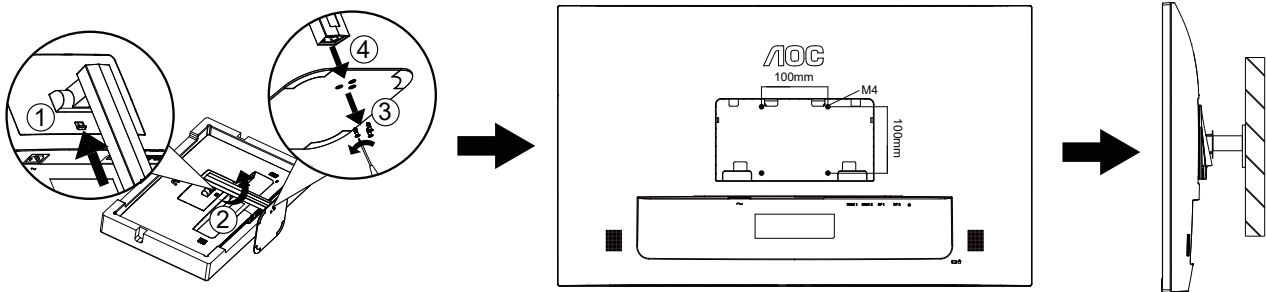
Note:

1. WIN10 versions before V1703 (not included) do not support HDR functionality.
2. In WIN10 version V1703, only the HDMI interface is functional and the DisplayPort interface cannot be activated.
3. Display settings:
 - a. Go to "Display Settings", select the resolution of 3840x2160, and select HDR on.
 - b. Choose a resolution of 3840x2160 (if available) to achieve the best HDR effect.



Wall Mounting

Preparing to Install An Optional Wall Mounting Arm.

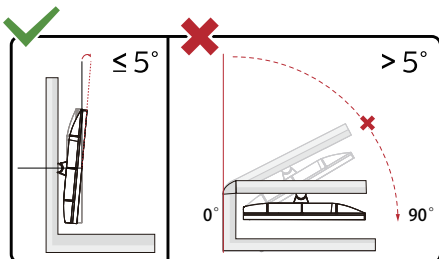


This product can be wall-mounted via a bracket adapter, compatible with 100×100mm VESA wall mounts. The bracket adapter is an optional component, and if you require wall-mount installation, please contact the manufacturer. Disconnect power before this procedure.

Follow these steps:

1. Remove the base.
2. Follow the manufacturer's instructions to assemble the wall mounting arm.
3. Place the wall mounting arm onto the back of the monitor. Line up the holes of the arm with the holes in the back of the monitor.
4. Insert the 4 screws into the holes and tighten.
5. Reconnect the cables.

Noted: VESA mounting screw holes are not available for all models, please check with the dealer or official department of AOC.



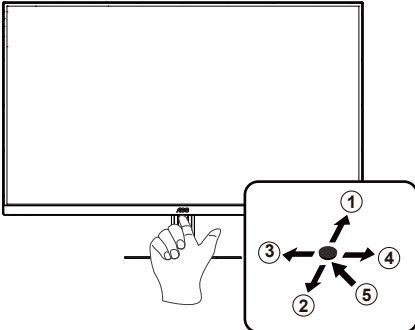
* Display design may differ from those illustrated.

WARNING:

1. To avoid potential screen damage, such as panel peeling, ensure that the monitor does not tilt downward by more than -5 degrees.
2. Do not press the screen while adjusting the angle of the monitor. Grasp only the bezel.

Adjusting

Hotkeys



1	Source/Exit/Up
2	Eco mode/DCR/Down
3	Clear Vision/Reduce/Left
4	Volume/Increase/Right
5	Power/Menu/Enter

Power/Menu/Enter

When the monitor is in the power-off state, press this button to turn on the monitor power.

When the monitor is in the power-on state, press this button to activate the OSD menu or confirm function adjustment;

When the OSD menu is closed, press and hold this button for about 2 seconds to turn off the monitor.

Volume/Increase/Right

When the OSD menu is closed, press the "right" button to enter the volume adjustment function, and press the "left" or "right" button to adjust the volume.

Eco mode/DCR/Down

When the OSD menu is closed, press the "Down" button to enter the brightness scene mode/dynamic contrast adjustment.

Use the "Left" or "Right" button to select different brightness scene modes and turn on dynamic contrast.

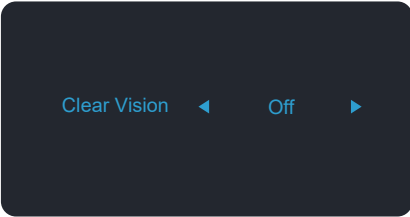
Source/Exit/Up

When the OSD menu is closed, press the "Up" button to activate the signal source switching function. Use the "Up" or "Down" button to select the signal source displayed in the information bar. Press the "Menu" button to adjust to the selected signal source.

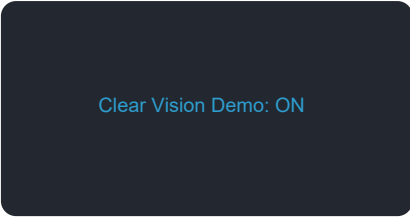
When the OSD menu is active, the "Up" button serves as the exit key (to exit the OSD menu).

Clear Vision

1. When there is no OSD, Press the “<” button to activate Clear Vision.
2. Use the “Left” or “Right” buttons to select between weak, medium, strong, or off settings. Default setting is always “off”.



3. Press and hold “Left” button for 5 seconds to activate the Clear Vision Demo, and a message of “Clear Vision Demo: on” will be display on the screen for a duration of 5 seconds. Press Menu or Exit button, the message will disappear. Press and hold “Right” button for 5 seconds again, Clear Vision Demo will be off.

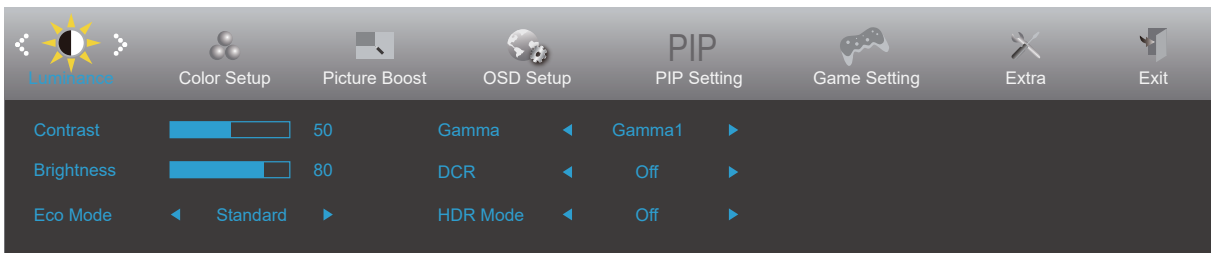





Clear Vision function provides the best image viewing experience by converting low resolution and blurry images into clear and vivid images.

Clear Vision	Off	Adjust the Clear Vision
	Weak	
	Medium	
	Strong	
Clear Vision Demo	on or off	Disable or Enable Demo

OSD Setting

Basic and simple instruction on the control keys.

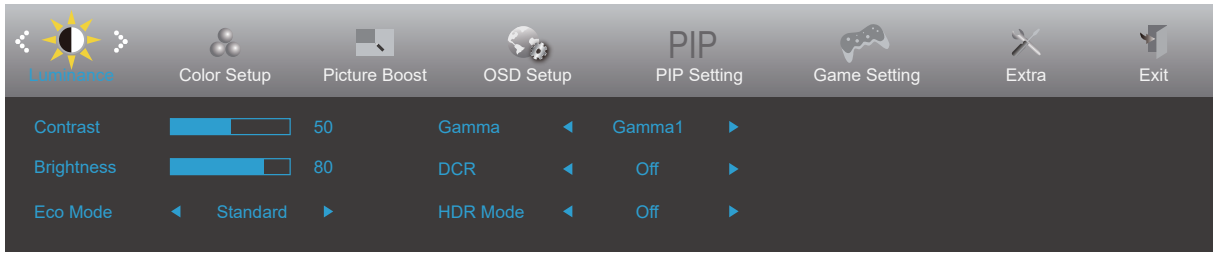


- 1). Press the  power button to activate the OSD window.
- 2). Press " Left " or " Right " button to navigate through the functions. Once the desired function is highlighted, press the " Down " button to activate it, press " Up " " Down " " Left " " Right " button to navigate through the sub-menu functions. Once the desired function is highlighted, press  power button to activate it.
- 3). Press " Left " or " Right " button to change the settings of the selected function. Press  power button to exit. If you want to adjust any other function, repeat steps 2-3.
- 4). OSD Lock Function: When the OSD menu is closed, Long press the " down " button for about 10 seconds to lock or unlock the OSD menu.

Notes:

- 1). If the input signal resolution of the product is local resolution or Adaptive Sync mode, the "Image Scale" option becomes invalid.
- 2). Activating one of the DCR, color brightening, and window brightening functions will automatically turn off the other two functions.

Luminance

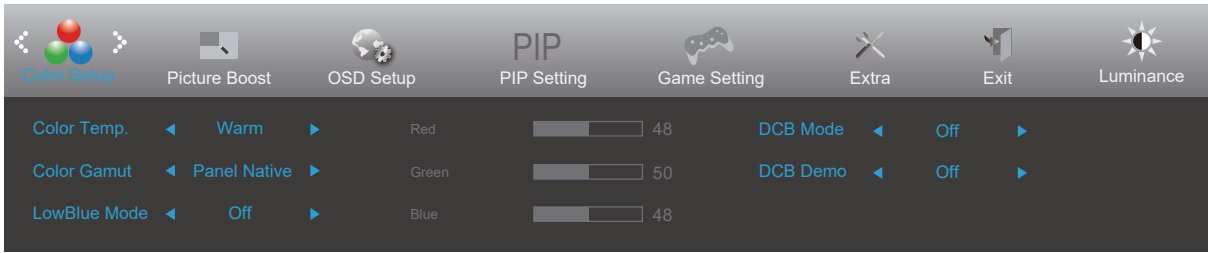



	Contrast	0-100		Contrast from Digital-register.
	Brightness	0-100		Backlight Adjustment.
	Eco mode	Standard		Standard Mode.
		Text		Text Mode.
		Internet		Internet Mode.
		Game		Game Mode.
		Movie		Movie Mode.
		Sports		Sports Mode.
		Reading		Reading Mode.
		Uniformity		Uniformity Mode.
	Gamma	Gamma 1		Adjust to Gamma 1.
		Gamma 2		Adjust to Gamma 2.
		Gamma 3		Adjust to Gamma 3.
	DCR	Off		Disable dynamic contrast ratio.
		On		Enable dynamic contrast ratio.
	HDR	Off		Select HDR Scene Mode. Note: When HDR content is detected, HDR options will be displayed for adjustment Whole.
		DisplayHDR		
		HDR Picture		
		HDR Movie		
		HDR Game		
HDR Mode	Off		Select HDR Mode. Note: When HDR content is not detected, the HDR mode option will be displayed for adjustment.	
	HDR Picture			
	HDR Movie			
	HDR Game			

Note:

When "HDR Mode" is set to " non-off ", the items " Contrast ", " ECO ", " Gamma " cannot be adjusted.
 When "HDR" is set to " non-off ", the items " Contrast ", " ECO ", " Gamma ", " DCR " cannot be adjusted.
 When " Color Gamut " under " Color Setup " is set to " sRGB ", the " Contrast ", " ECO ", " Gamma ", " HDR " or " HDR Mode " items cannot be adjusted.

Color Setup



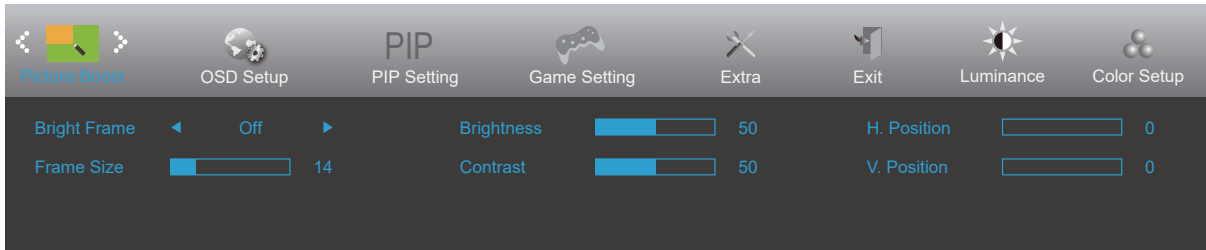
	Color Temp.	Warm	Recall Warm Color Temperature from EEPROM.
		Normal	Recall Normal Color Temperature from EEPROM.
		Cool	Recall Cool Color Temperature from EEPROM.
		User	Restore Color Temperature from EEPROM.
	Color Gamut	Panel Native	Standard color space panel.
		sRGB	Recall SRGB Color Temperature from EEPROM.
	LowBlue Mode	Off	Decrease blue light wave by controlling color temperature.
		Multimedia	
		Internet	
		Office	
		Reading	
	Red	0-100	Red gain from Digital-register.
	Green	0-100	Green gain from Digital-register.
	Blue	0-100	Blue gain from Digital-register.
	DCB Mode	Off	Disable or Enable DCB Mode
		Full Enhance	Disable or Enable Full Enhance Mode
		Nature Skin	Disable or Enable Nature Skin Mode
Green Field		Disable or Enable Green Field Mode	
Sky-blue		Disable or Enable Sky-blue Mode	
AutoDetect		Disable or Enable AutoDetect Mode	
DCB Demo	On or Off	Disable or Enable Demo	


Note:

When “HDR” or “HDR Mode” under “Luminance” is set to “non-off”, all items under “Color Setup” cannot be adjusted.

When “Color Gamut” is set to “sRGB”, all other items under “Color Setup” cannot be adjusted except for “Color Gamut”.

Picture Boost

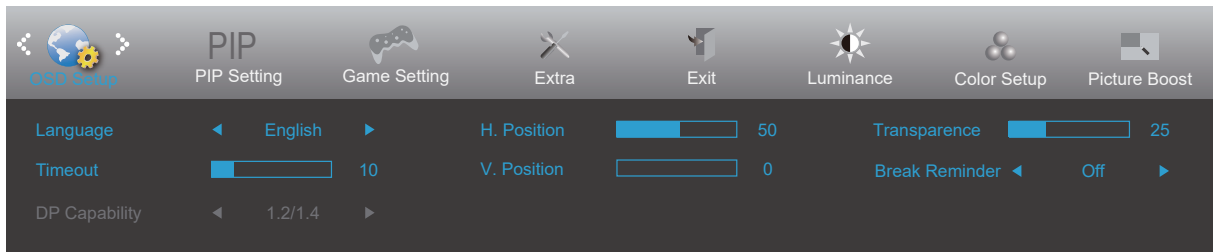



	Bright Frame	On / Off	Disable or Enable Bright Frame
	Frame Size	14-100	Adjust Frame Size
	Brightness	0-100	Adjust Frame Brightness
	Contrast	0-100	Adjust Frame Contrast
	H. Position	0-100	Adjust Frame horizontal Position
	V. Position	0-100	Adjust Frame vertical Position

Note:

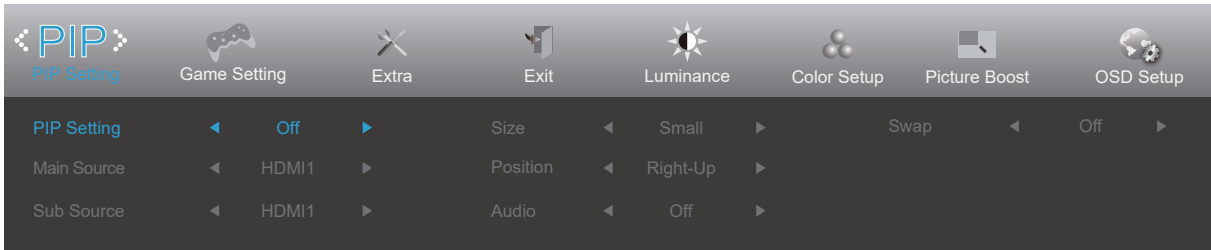
- 1) For a better viewing experience, adjust the brightness, contrast, and position of the picture boost.
- 2) When "HDR" or "HDR Mode" under "Luminance" is set to "non-off", all items under "Picture Boost" cannot be adjusted.

OSD Setup



	Language		Select the OSD language.
	Timeout	5-120	Adjust the OSD Timeout.
	DP Capability	1.1 / 1.2 / 1.4	Choose a compatible DP version. Please note: Adaptive Sync function can only be used when DP1.2 and above. If DP video content supports DP1.2 or DP1.4, please set the DP version to Set to DP1.2/DP1.4; Otherwise, please select DP1.1.
	H. Position	0-100	Adjust the horizontal position of OSD.
	V. Position	0-100	Adjust the vertical position of OSD.
	Transparence	0-100	Adjust the transparence of OSD.
	Break Reminder	On or Off	Break reminder if the user continuously work for more than 1hrs.

PIP Setting



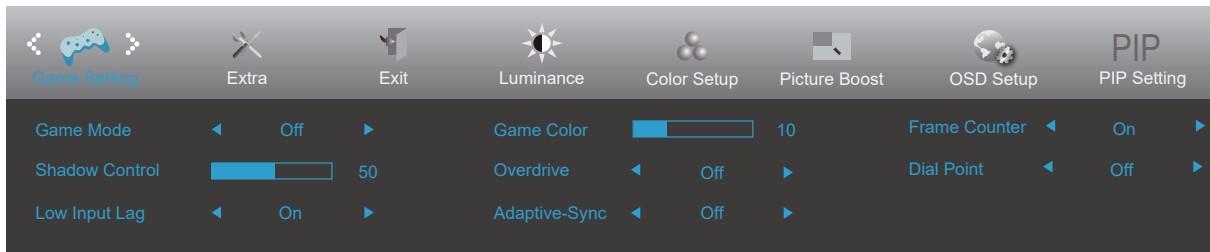
PIP	PIP Setting	Off / PIP / PBP	Disable or enable the PIP and PBP functions.
	Main Source		Select the Main Source.
	Sub Source		Select the Main Source.
	Size	Small / Middle / Large	Select the Main Source.
	Position	Right-Up / Right-Down / Left-Down / Left-Up	Select the Sub source screen positioning.
	Audio	On Off	Disable or Enable PIP Audio.
	Swap	On Off	Switch screen sources.


Note:

- 1) Some OSD menu color adjustments are only effective for the main screen, therefore, the main screen and sub screens may have different colors.
- 2) When enabling PIP/PBP, the compatibility of the main/sub source inputs is shown in the table below:

PIP/PBP		Main source			
		HDMI1	HDMI2	DP1	DP2
Sub source	HDMI1	V	V	V	V
	HDMI2	V	V	V	V
	DP1	V	V	V	V
	DP2	V	V	V	V

Game Setting

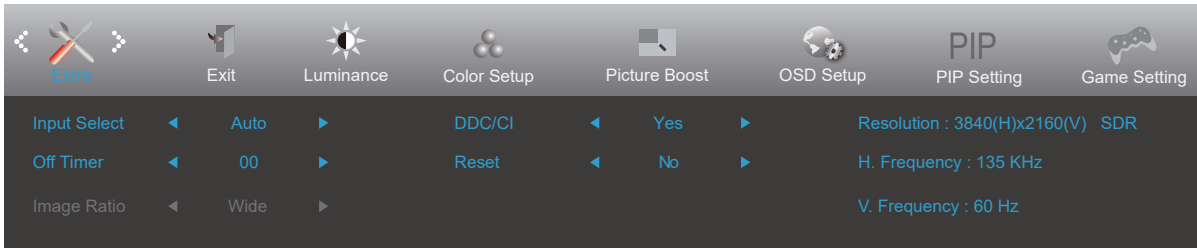



	Game Mode	Off	No optimization by Smart image game.
		FPS	For playing FPS (first Person Shooters) games. Improves dark theme black level details.
		RTS	For playing RTS (Real Time Strategy). Improves the image quality.
		Racing	For playing Racing games, Provides fastest response time and high color saturation.
		Gamer 1	User's preference settings saved as Gamer 1.
		Gamer 2	User's preference settings saved as Gamer 2.
		Gamer 3	User's preference settings saved as Gamer 3.
	Shadow Control	0-100	Shadow Control Default is 50, then end-user can adjust from 50 to 100 or 0 to increase contrast for clear picture. 1. If picture is too dark to be saw the detail clearly, adjusting from 50 to 100 for clear picture. 2. If picture is too white to be saw the detail clearly, adjusting from 50 to 0 for clear picture.
	Low Input Lag	On or Off	Turning off the frame buffer can reduce input delay. Note: The low input delay function is enabled by default when Adaptive-Sync is turned on and cannot be adjusted.
	Game Color	0-20	Game Color will provide 0-20 level for adjusting saturation to get better picture.
Overdrive	Off	Adjust the response time.	
	Weak		
	Medium		
	Strong		
Adaptive-Sync	On or Off	Disable or Enable Adaptive-Sync. Adaptive-Sync Run Reminder: When the Adaptive-Sync feature is enabled, there may be flashing in some game environments.	
Frame Counter	Off / Right-up / Right-Down / Left-Down / Left-Up	Display V frequency on the corner selected.	
Dial Point	On or Off	The " Dial Point " function places an aiming indicator in the center of screen for helping gamers to play First Person Shooter (FPS) games with an accurate and precise aiming.	

Note:

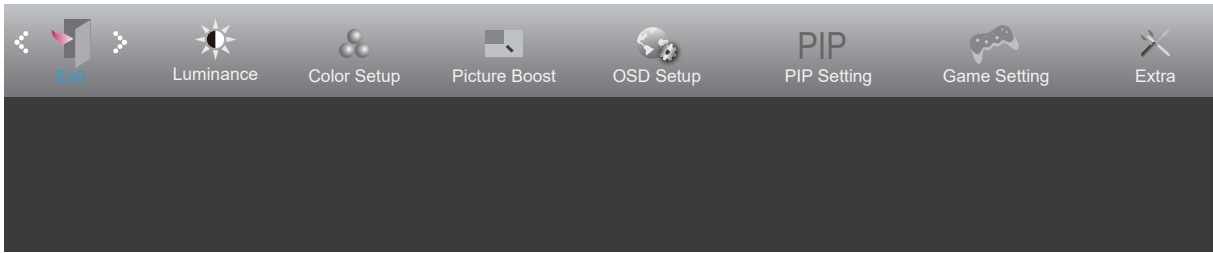
When " HDR Mode " or " HDR " under " Luminance " is set to " non-off ", the " Game Mode ", " Shadow Control ", " Game Color ", and " LowBlue Mode " items in the " Game Setting " cannot be adjusted.


Extra



	Input Select	Auto / HDMI1 / HDMI2 / DP1 / DP2	Select Input Signal Source.
	Off Timer	0-24 hrs	Select DC off time.
	Image Ratio	Wide / 4:3 / 1:1 // Movie1 / Movie2	Select image ratio for display.
	DDC/CI	Yes or No	Turn ON/OFF DDC/CI Support.
	Reset	Yes or No	Reset the menu to default.

Exit



	Exit		Exit the main OSD
---	------	--	-------------------

LED Indicator

Status	LED Color
Full Power Mode	White
Active-off Mode	Orange

Troubleshoot

Problem & Question	Possible Solutions
Power LED Is Not ON	Make sure the power button is ON and the Power Cord is properly connected to a grounded power outlet and to the monitor.
No images on the screen	<ul style="list-style-type: none"> • Is the power cord connected properly? Check the power cord connection and power supply. • Is the cable connected correctly? (Connected using the VGA cable) Check the VGA cable connection. (Connected using the HDMI cable) Check the HDMI cable connection. * VGA/HDMI input is not available on every model. • If the power is on, reboot the computer to see the initial screen (the login screen), which can be seen. If the initial screen (the login screen) appears, boot the computer in the applicable mode (the safe mode for Windows 7/8/10) and then change the frequency of the video card. (Refer to the Setting the Optimal Resolution) If the initial screen (the login screen) does not appear, contact the Service Center or your dealer. • Can you see "Input Not Supported" on the screen? You can see this message when the signal from the video card exceeds the maximum resolution and frequency that the monitor can handle properly. Adjust the maximum resolution and frequency that the monitor can handle properly. • Make sure the AOC Monitor Drivers are installed.
Picture Is Fuzzy & Has Ghosting Shadowing Problem	Adjust the Contrast and Brightness Controls. Press to auto adjust. Make sure you are not using an extension cable or switch box. We recommend plugging the monitor directly to the video card output connector on the back.
Picture Bounces, Flickers Or Wave Pattern Appears In The Picture	Move electrical devices that may cause electrical interference as far away from the monitor as possible. Use the maximum refresh rate your monitor is capable of at the resolution you are using.
Monitor Is Stuck In Active Off-Mode"	The Computer Power Switch should be in the ON position. The Computer Video Card should be snugly fitted in its slot. Make sure the monitor's video cable is properly connected to the computer. Inspect the monitor's video cable and make sure no pin is bent. Make sure your computer is operational by hitting the CAPS LOCK key on the keyboard while observing the CAPS LOCK LED. The LED should either turn ON or OFF after hitting the CAPS LOCK key.
Missing one of the primary colors (RED, GREEN, or BLUE)	Inspect the monitor's video cable and make sure that no pin is damaged. Make sure the monitor's video cable is properly connected to the computer.
Screen image is not centered or sized properly	Adjust H-Position and V-Position or press hot-key (AUTO).
Picture has color defects (white does not look white)	Adjust RGB color or select desired color temperature.
Horizontal or vertical disturbances on the screen	Use Windows 7/8/10/11 shut-down mode to adjust CLOCK and FOCUS. Press to auto-adjust.
Regulation & Service	Please refer to Regulation & Service Information which is in the CD manual or www.aoc.com (to find the model you purchase in your country and to find Regulation & Service Information in Support page.

Specification

Main specifications

Panel	Model name	U32V5N	
	Driving system	TFT Color LCD	
	Viewable Image Size	80.0cm diagonal	
	Pixel pitch	0.18159 (H)mm x 0.18159 (V) mm	
	Display Color	1.07B Colors ^[1]	
Others	Horizontal scan range	30k-140kHz	
	Horizontal scan Size(Maximum)	697.306 mm	
	Vertical scan range	23-75Hz	
	Vertical Scan Size(Maximum)	392.234 mm	
	Optimal preset resolution	3840x2160@60Hz	
	Max resolution	3840x2160@60Hz	
	Plug & Play	VESA DDC2B/CI	
	Power Source	100-240V~ 50/60Hz 2.0A	
	Power Consumption	Typical(default brightness and contrast)	56W
Max. (brightness = 100, contrast =100)		≤61W	
Standby mode		≤0.5W	
Physical Characteristics	Connector Type	HDMIx2 / DPx2 / Audio out	
	Signal Cable Type	Detachable	
Environmental	Temperature	Operating	0°C~ 40°C
		Non-Operating	-25°C~ 55°C
	Humidity	Operating	10% ~ 85% (non-condensing)
		Non-Operating	5% ~ 93% (non-condensing)
	Altitude	Operating	0~ 5000 m (0~ 16404ft)
		Non-Operating	0~ 12192m (0~ 40000ft)

Note:

[1] : The maximum number of display colors supported by this product is 1.07 billion, and the setting conditions are as follows (there may be differences due to the output limitation of some graphics cards):

Signal Version Color Format State Color Bit	HDMI2.0			DisplayPort1.4	
	YCbCr422	YCbCr420	YCbCr444 RGB	YCbCr422	YCbCr444 RGB
UHD 60Hz 10 bpc	V	V	\	V	V
UHD 60Hz 8 bpc	V	V	V	V	V
UHD 50Hz 10 bpc	V	V	\	\	\
UHD 50Hz 8 bpc	V	V	V	\	\
Low resolution 8 bpc/10 bpc	V	\	V	V	V

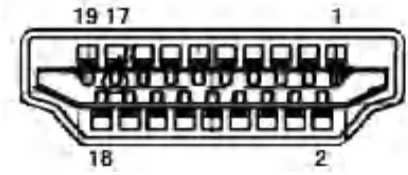
Preset Display Modes

STANDARD	RESOLUTION ($\pm 1\text{Hz}$)	HORIZONTAL FREQUENCY(kHz)	VERTICAL FREQUENCY(Hz)
VGA	640x480@60Hz	31.469	59.94
	640x480@72Hz	37.861	72.809
	640x480@75Hz	37.5	75
SVGA	800x600@60Hz	37.879	60.317
	800x600@72Hz	48.077	72.188
	800x600@75Hz	46.875	75
XGA	1024x768@60Hz	48.363	60.004
	1024x768@70Hz	56.476	70.069
	1024x768@75Hz	60.023	75.029
SXGA	1280x1024@60Hz	63.981	60.020
	1280x1024@75Hz	79.976	75.025
WXGA+	1440x900@60Hz	55.935	59.887
	1440x900@60Hz	55.469	59.901
WSXGA	1680x1050@60Hz	65.290	59.954
	1680x1050@60Hz	64.674	59.883
FHD	1920x1080@60Hz	67.5	60
QHD	2560x1440@60Hz	84.6	60
UHD	3840x2160@60Hz	129.6	60
IBM mode			
DOS	720x400@70Hz	31.469	70.087
MAC mode			
VGA	640x480@67Hz	35	66.667
SVGA	832x624@75Hz	49.725	74.551
XGA	1024x768@75Hz	60.241	74.927

Note:

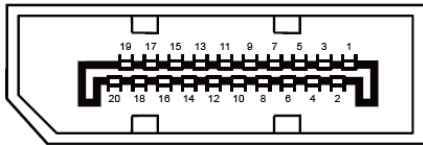
According to the VESA standard, different operating systems and graphics cards may have certain errors ($\pm 1\text{Hz}$) on resolution. Actual please refer to the actual product.

Pin Assignments



19-Pin Color Display Signal Cable

Pin No.	Signal Name	Pin No.	Signal Name	Pin No.	Signal Name
1.	TMDS Data 2+	9.	TMDS Data 0-	17.	DDC/CEC Ground
2.	TMDS Data 2 Shield	10.	TMDS Clock +	18.	+5V Power
3.	TMDS Data 2-	11.	TMDS Clock Shield	19.	Hot Plug Detect
4.	TMDS Data 1+	12.	TMDS Clock-		
5.	TMDS Data 1Shield	13.	CEC		
6.	TMDS Data 1-	14.	Reserved (N.C. on device)		
7.	TMDS Data 0+	15.	SCL		
8.	TMDS Data 0 Shield	16.	SDA		



20-Pin Color Display Signal Cable

Pin No.	Signal Name	Pin No.	Signal Name
1	ML_Lane 3 (n)	11	GND
2	GND	12	ML_Lane 0 (p)
3	ML_Lane 3 (p)	13	CONFIG1
4	ML_Lane 2 (n)	14	CONFIG2
5	GND	15	AUX_CH(p)
6	ML_Lane 2 (p)	16	GND
7	ML_Lane 1 (n)	17	AUX_CH(n)
8	GND	18	Hot Plug Detect
9	ML_Lane 1 (p)	19	Returning to DP_PWR
10	ML_Lane 0 (n)	20	DP_PWR

Plug and Play

Plug & Play DDC2B Feature

This monitor is equipped with VESA DDC2B capabilities according to the VESA DDC STANDARD. It allows the monitor to inform the host system of its identity and, depending on the level of DDC used, communicate additional information about its display capabilities.

The DDC2B is a bi-directional data channel based on the I2C protocol. The host can request EDID information over the DDC2B channel.